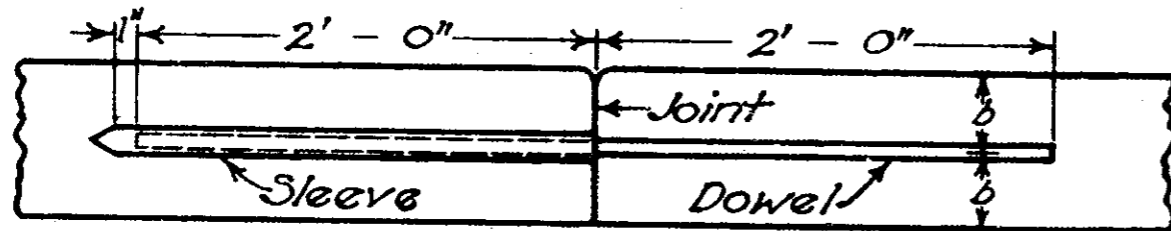
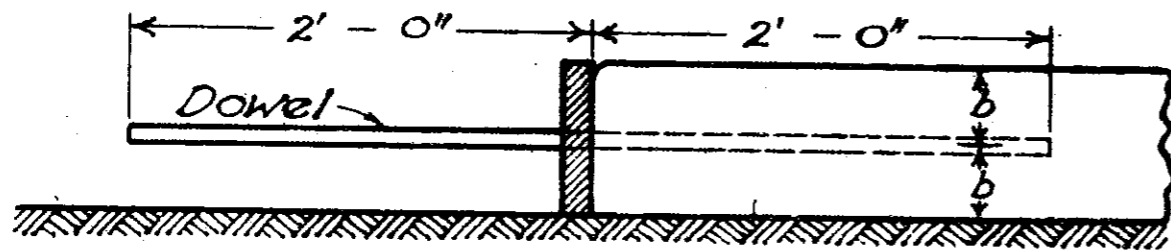


PLAN OF EDGE BARS AT JOINT



DOWEL JOINT

Using round smooth bars with neat fitting sliding sleeves on one end.



BULKHEAD

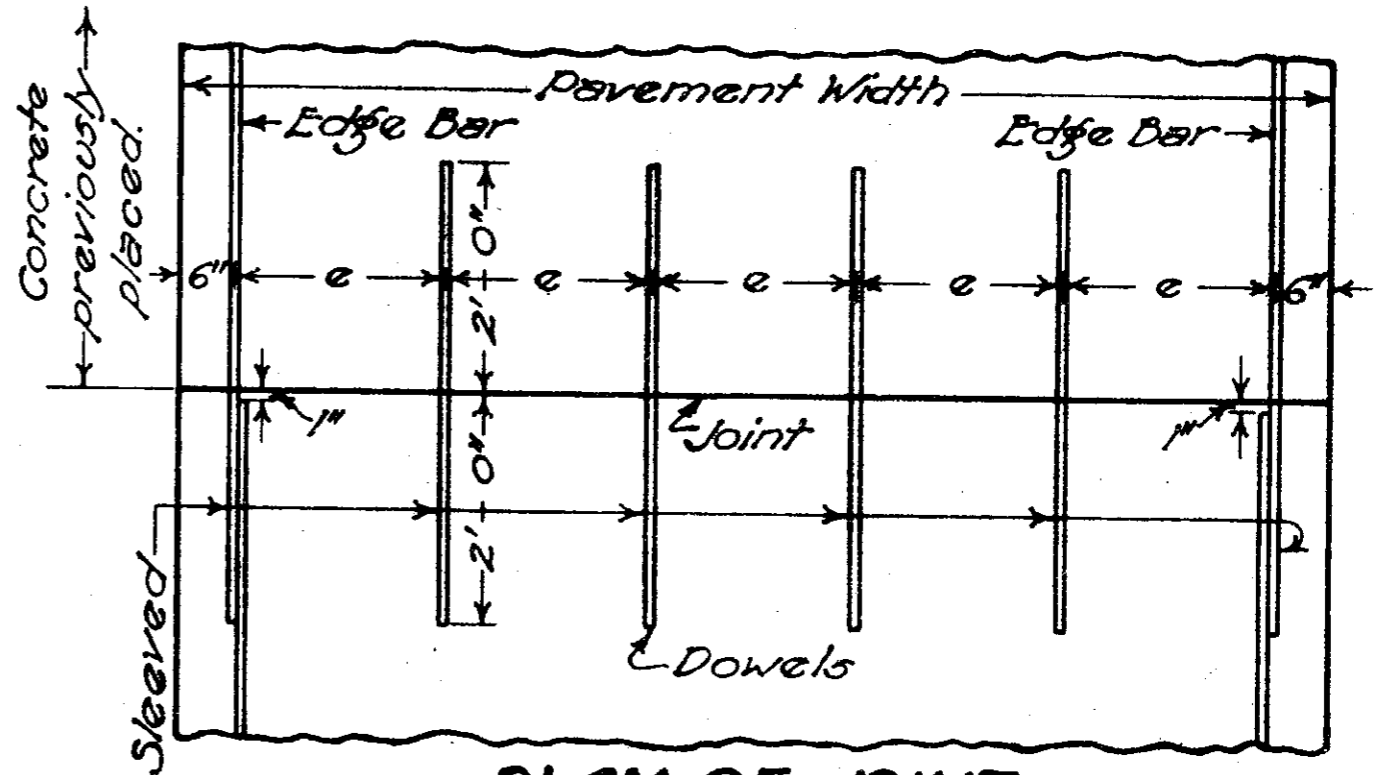
All bulkheads to be constructed to permit edge bars to be continuous through joints.

Care shall be taken in removing bulkhead and placing adjacent concrete, to see that the dowel bars are embedded in the concrete without being bent.

All construction joints to be edged with a beading tool of 1/4" radius.

If the width of the pavement exceeds 24' additional Sleeved Dowel Bars shall be placed to preclude of dimension "e" exceeding 4.5'.

All sleeves shall be of metal.



PLAN OF JOINT

BUREAU OF CONSTRUCTION
OHIO
DEPARTMENT OF HIGHWAYS

CONSTRUCTION
JOINT

STANDARD
CONSTRUCTION DRAWING **96**
1930

APPROVED *E.H.* CHIEF ENGR. CONST.

REVISED