

# BITUMINOUS CONCRETE RESURFACING AND WIDENING

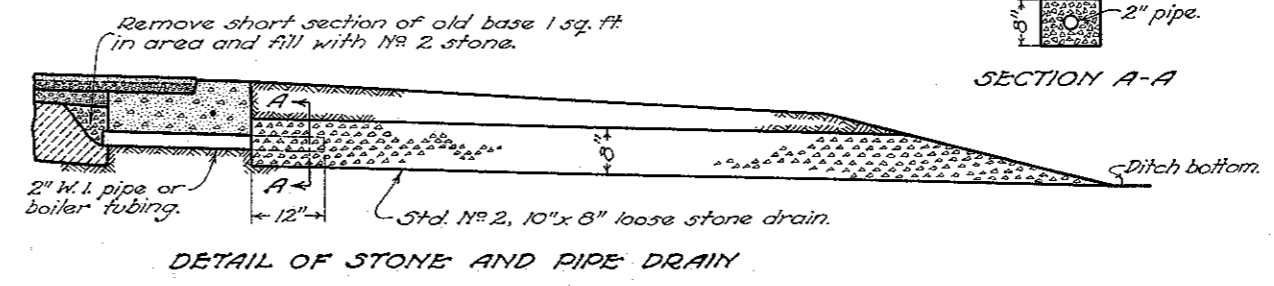
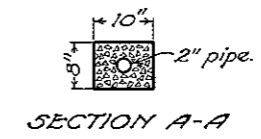
## NOTES

**CONCRETE BASE:**  
Surface of concrete base to be constructed parallel to the finished crown at all points.

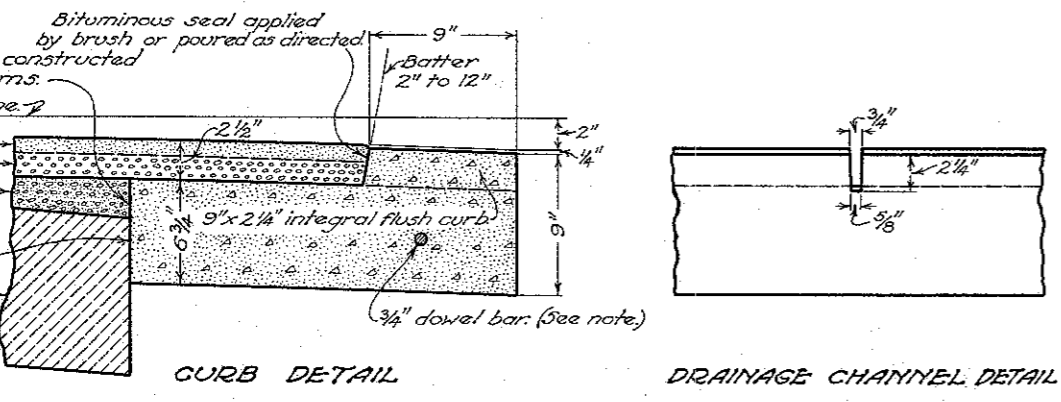
**JOINTS, CONCRETE BASE:**  
All concrete base widening shall have sleeved dowel bars placed in all joints as per Standard Construction Drawing No B-70-J. One bar shall be placed six inches from the outside edge for widths of base less than four feet; two bars shall be placed six inches from the edges of base four to six feet in width and additional bars with standard spacing for all widths greater than six feet. All bars to be placed in the center of the slab vertically.

**FLUSH CURBS:**  
The surface of concrete flush curbs shall show, when finished, no variation which exceeds 1/8 inch from a ten foot straight edge laid parallel with curb.

**DRAINAGE:**  
Construct Standard No 2 loose stone drains and drainage channels through curbs as detailed at all depressions or as directed by engineer. Contraction joints shall be left open so they may act as drainage channels.



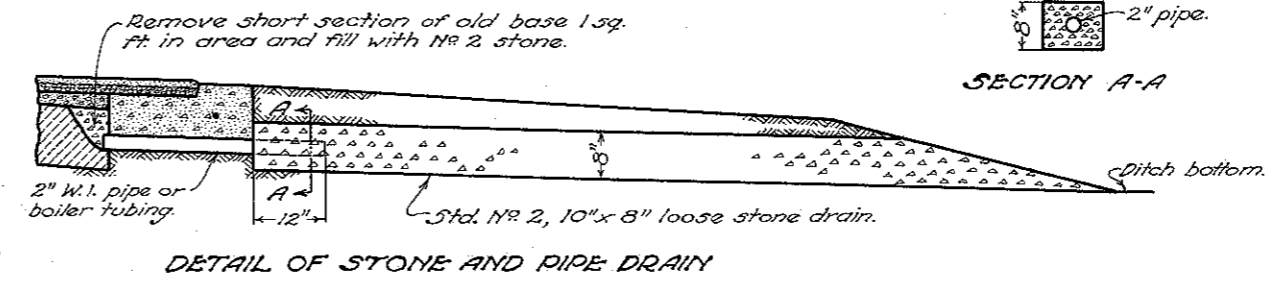
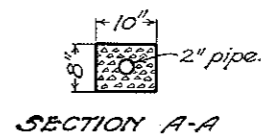
DETAIL OF STONE AND PIPE DRAIN



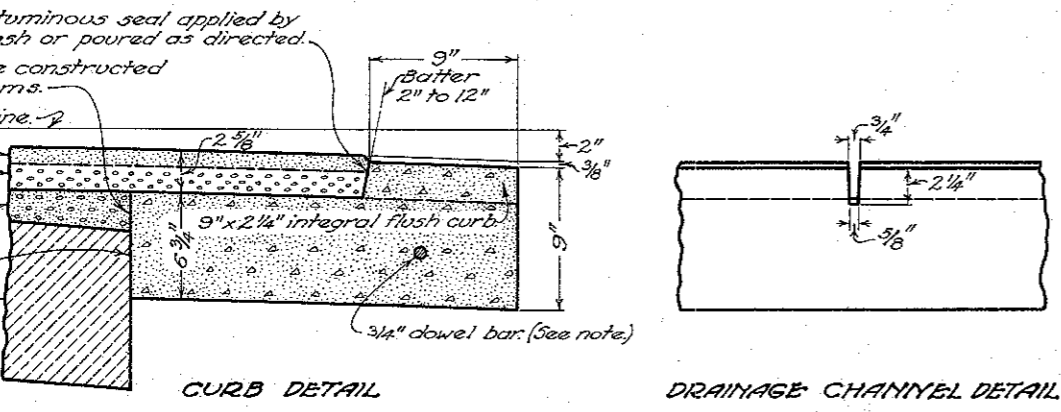
CURB DETAIL

DRAINAGE CHANNEL DETAIL

### DETAIL OF CONCRETE BASE WIDENING WITH INTEGRAL FLUSH CURB FOR USE WITH SURFACE COURSE OF HOT LAID BITUMINOUS CONCRETE PAVEMENT ITEMS B-50 AND T-50



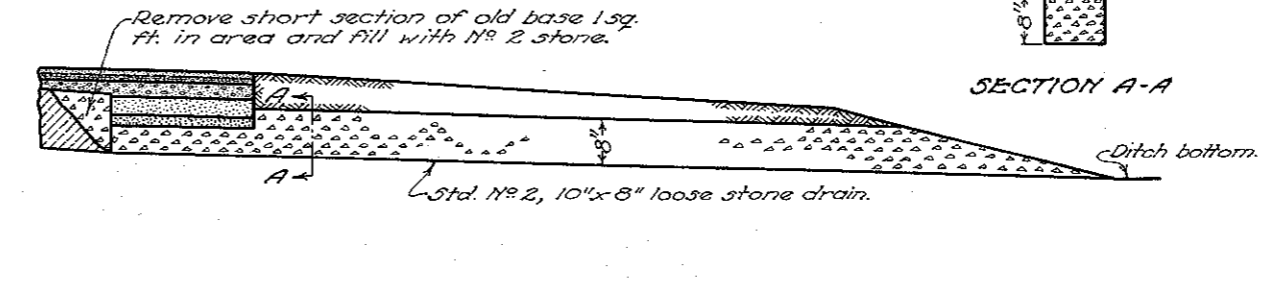
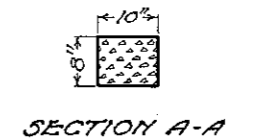
DETAIL OF STONE AND PIPE DRAIN



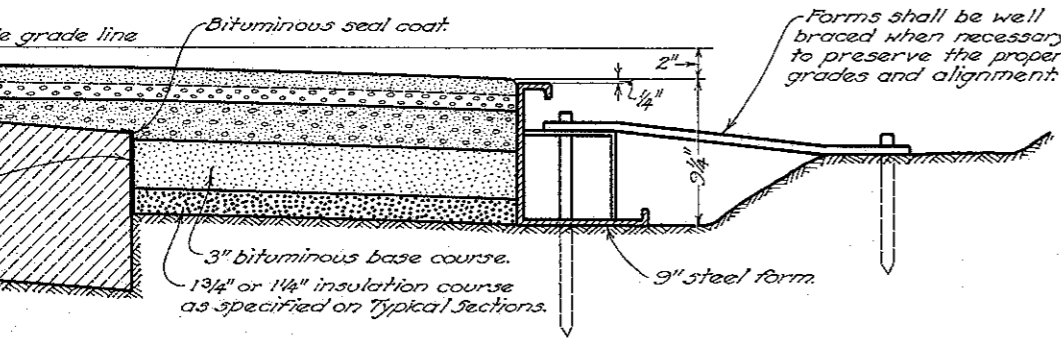
CURB DETAIL

DRAINAGE CHANNEL DETAIL

### DETAIL OF CONCRETE BASE WIDENING WITH INTEGRAL FLUSH CURB FOR USE WITH SURFACE COURSE OF COLD LAID BITUMINOUS CONCRETE PAVEMENT ITEMS B-60, B-61, T-60 AND T-61



DETAIL OF STONE DRAIN



ACCEPTABLE METHOD OF BRACING FORMS

### DETAIL OF BITUMINOUS BASE WIDENING FOR USE WITH SURFACE COURSE OF HOT OR COLD LAID BITUMINOUS CONCRETE PAVEMENT ITEMS B-11, B-50, B-60, B-61, T-50, T-60 AND T-61

BUREAU OF CONSTRUCTION  
OHIO  
DEPARTMENT OF HIGHWAYS  
**BIT. CONC.  
RESURFACING  
AND WIDENING**  
STANDARD  
CONSTRUCTION B-T-50-60  
DRAWING  
APPROVED *E.H.* CHIEF ENGR. CONST.

AUG. 1932