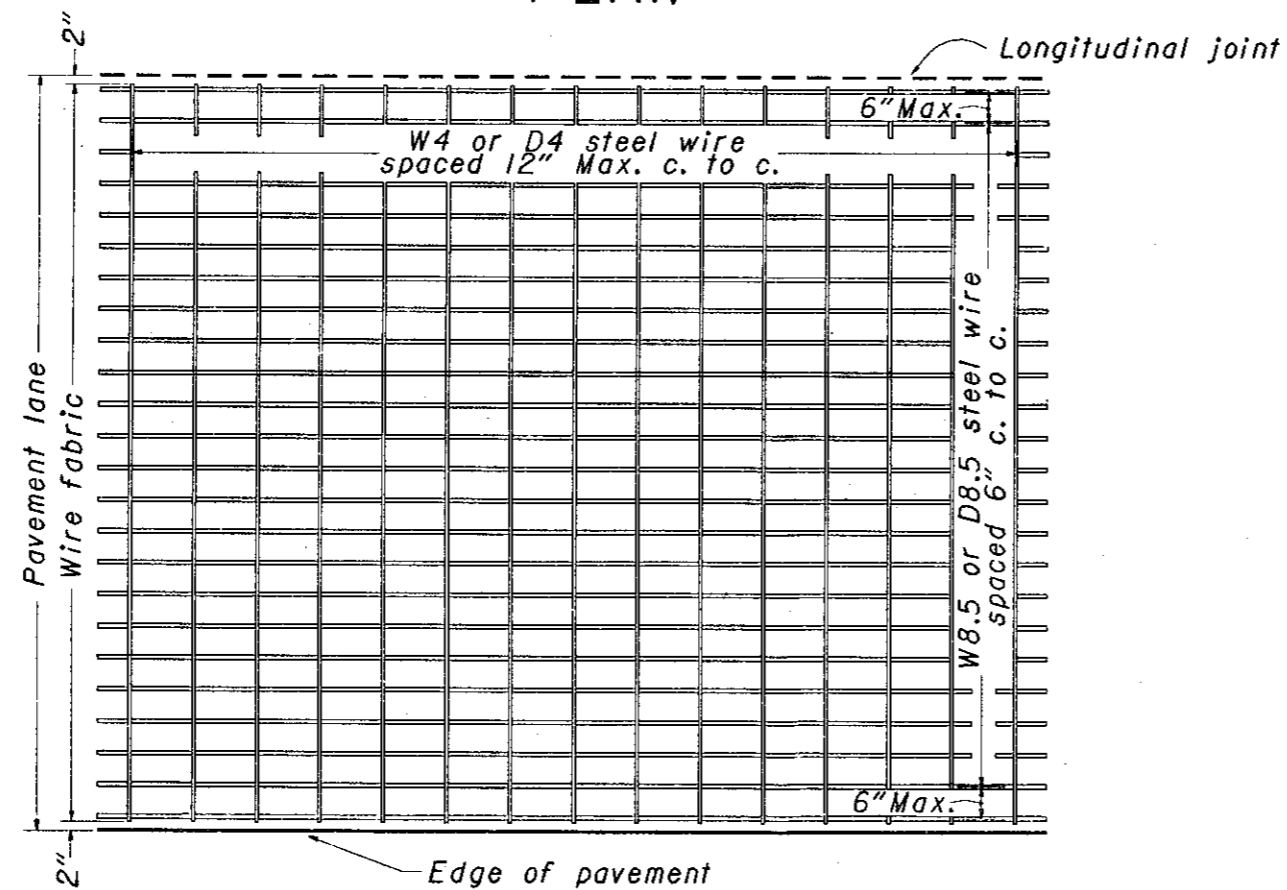


PLAN



WIRE FABRIC DETAIL

NOTES

STEEL REINFORCING in normal or wider lane widths may consist of two units with an approved longitudinal hinge. The hinge shall consist of W4 or D4 steel wires connecting the two units such that the longitudinal members on either side of the hinge will be properly spaced when the reinforcing is in final position.

The distance from the top of the concrete pavement to the reinforcing steel may vary from $2\frac{1}{2}$ inches to $T/3 + 1$ inch, where T = thickness of the concrete pavement.

BUREAU OF LOCATION AND DESIGN
OHIO DEPARTMENT OF TRANSPORTATION

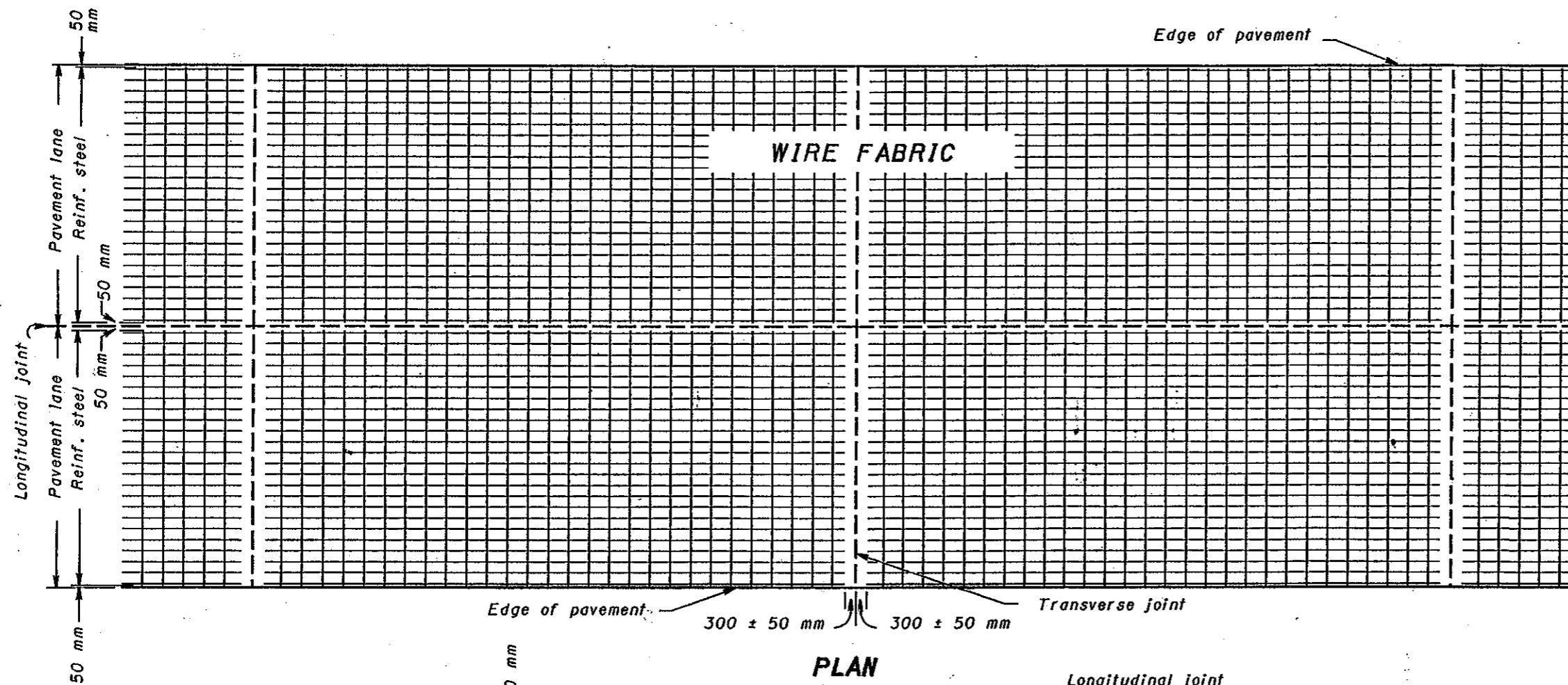
**CONCRETE
PAVEMENT
REINFORCING**

DATE
2-21-92

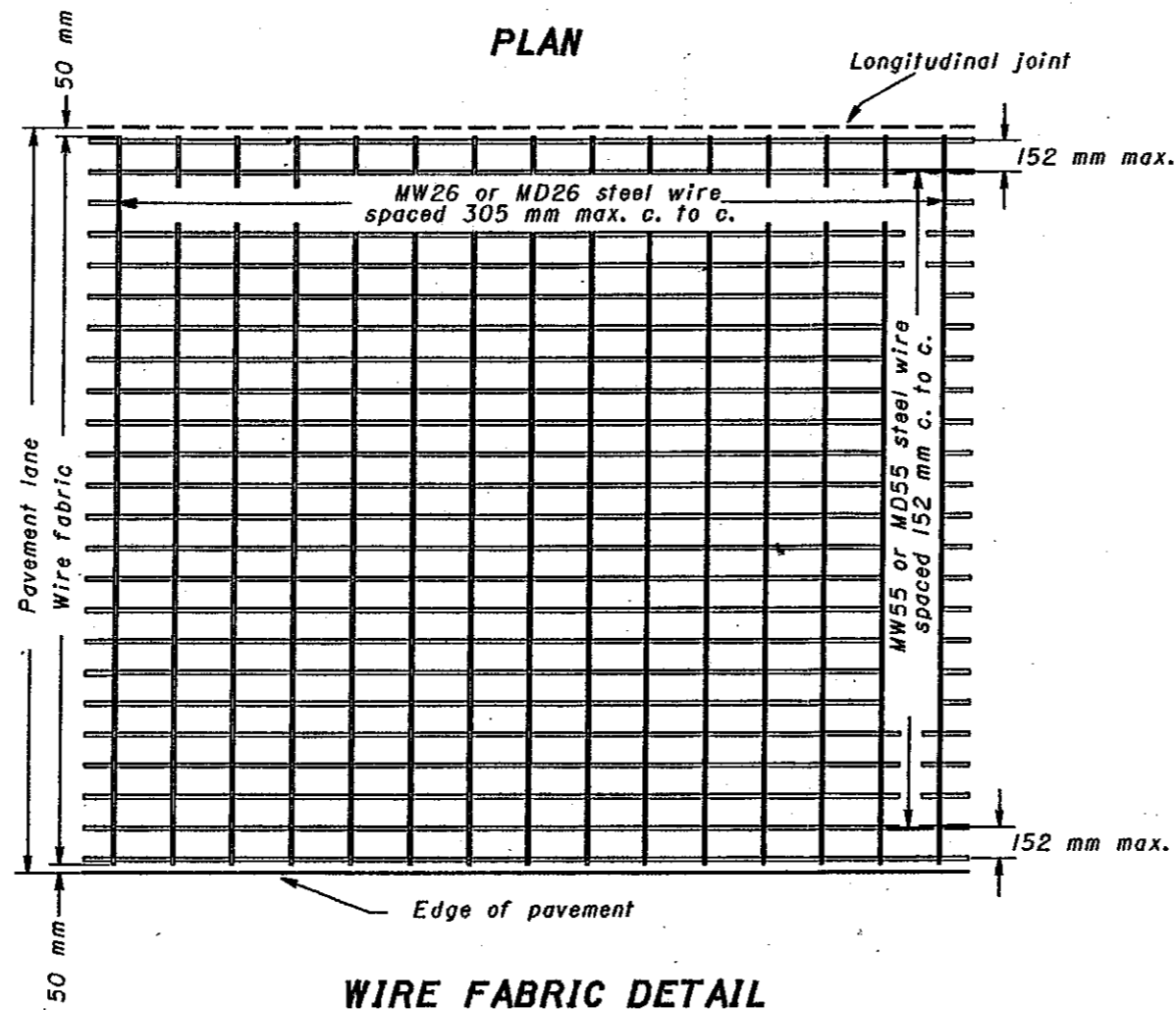
STANDARD
CONSTRUCTION
DRAWING

BP-1.1

APPROVED *D.K. Hulman* ENGR., L & D



PLAN



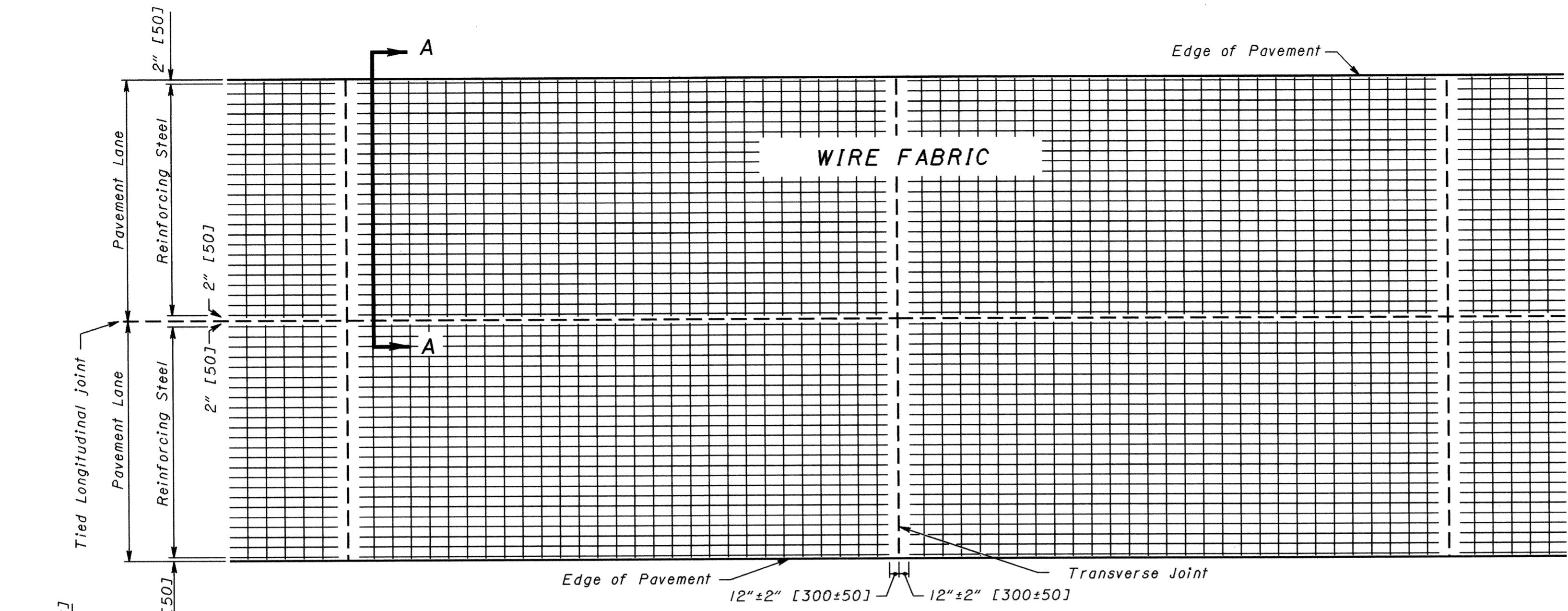
WIRE FABRIC DETAIL

NOTES

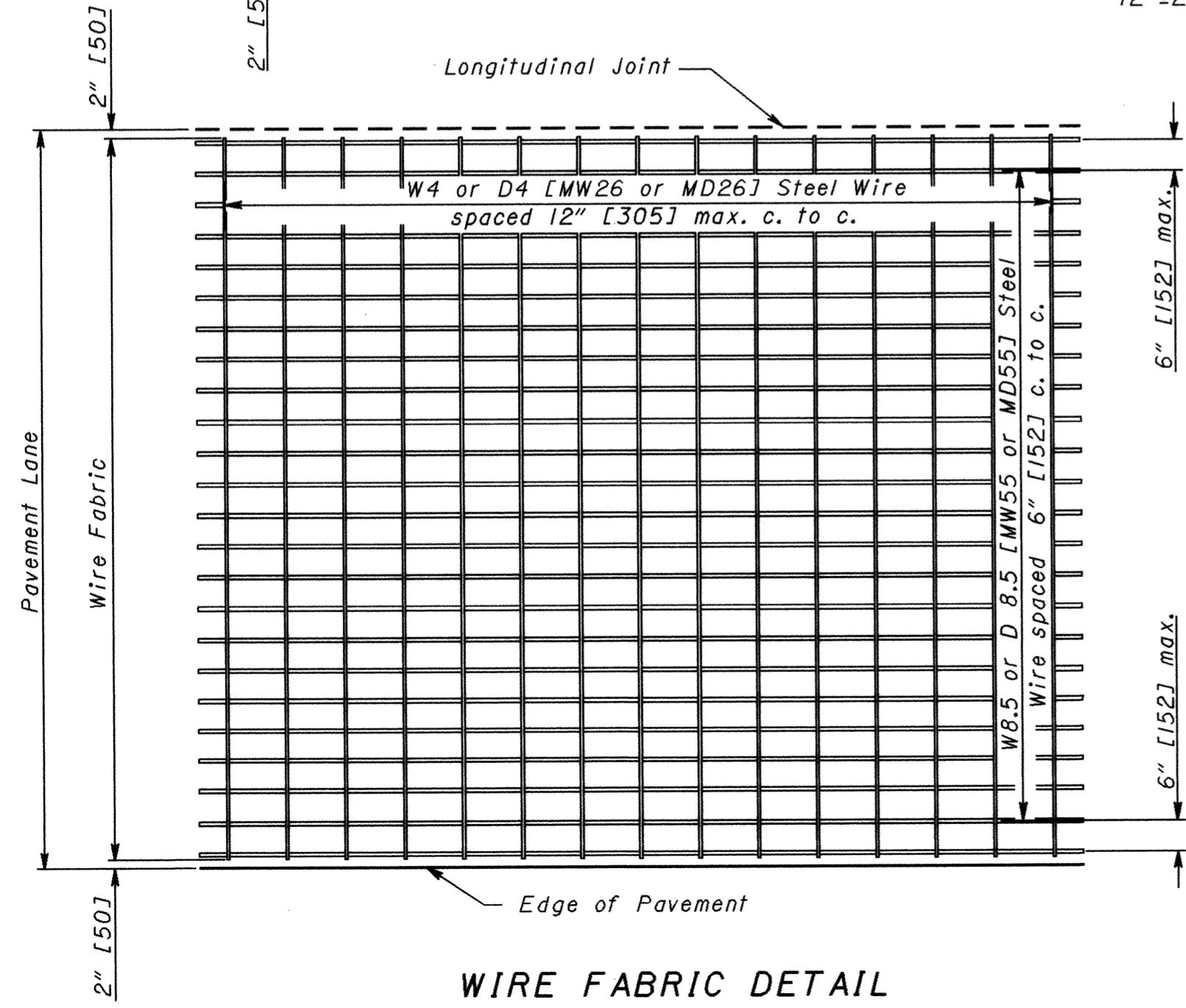
STEEL REINFORCING: In normal or wider lane widths, reinforcing may consist of two units with an approved longitudinal hinge. The hinge shall consist of MW26 or MD26 steel wires connecting the two units such that the longitudinal members on either side of the hinge will be properly spaced when the reinforcing is in final position. The distance from the top of the concrete pavement to the reinforcing steel may vary from 65 mm to $T/3 + 25$ mm, where T equals the thickness of the concrete pavement.



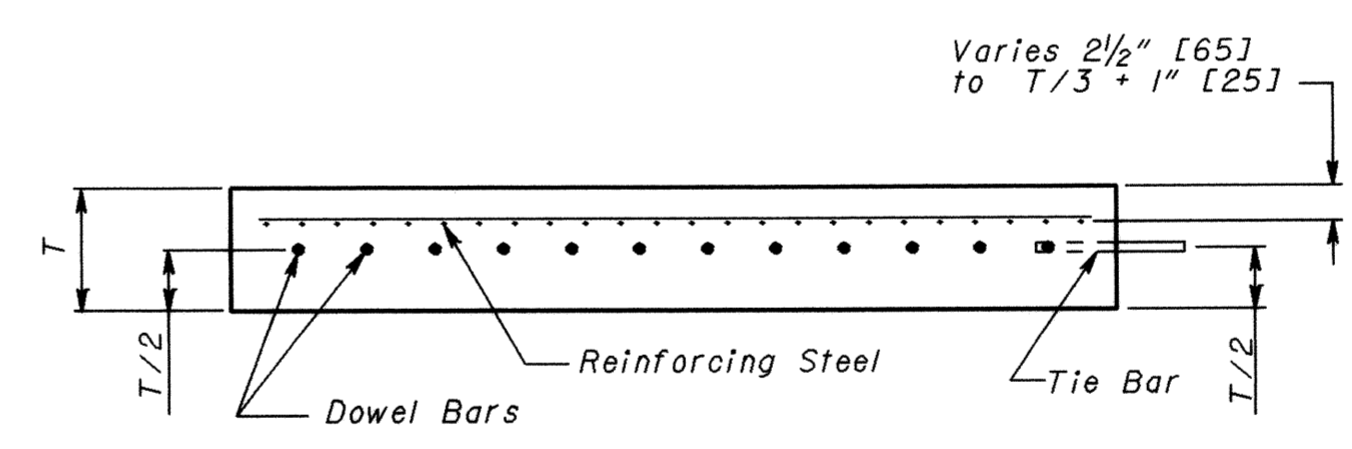
BUREAU OF LOCATION AND DESIGN OHIO DEPARTMENT OF TRANSPORTATION	
CONCRETE PAVEMENT REINFORCING	DATE 10-28-94
STANDARD CONSTRUCTION DRAWING BP-1.1M	
APPROVED <i>D.K. Hulman</i> ENGR., L & D	



PLAN



WIRE FABRIC DETAIL



SECTION A-A

NOTES

STEEL REINFORCING: In normal or wider lane widths, reinforcing may consist of two units with an approved longitudinal hinge. The hinge shall consist of W4 or D4 [MW26 or MD26] steel wires connecting the two units such that the longitudinal members on either side of the hinge will be properly spaced when the reinforcing is in the final position.

Reinforcing steel in final position shall not touch either the dowels or tie bars.

THIS DRAWING REPLACES BP-1.1M DATED 10-28-94.

NUMBER BP-1.1	STANDARD ROADWAY CONSTRUCTION DRAWING	ROADWAY ENGINEERING SERVICES	STDS. ENGR. M. EVANS	REVISIONS	OHIO DEPARTMENT OF TRANSPORTATION
	CONCRETE PAVEMENT REINFORCING		DRAWN D. FOCKE		DATE 10-28-00