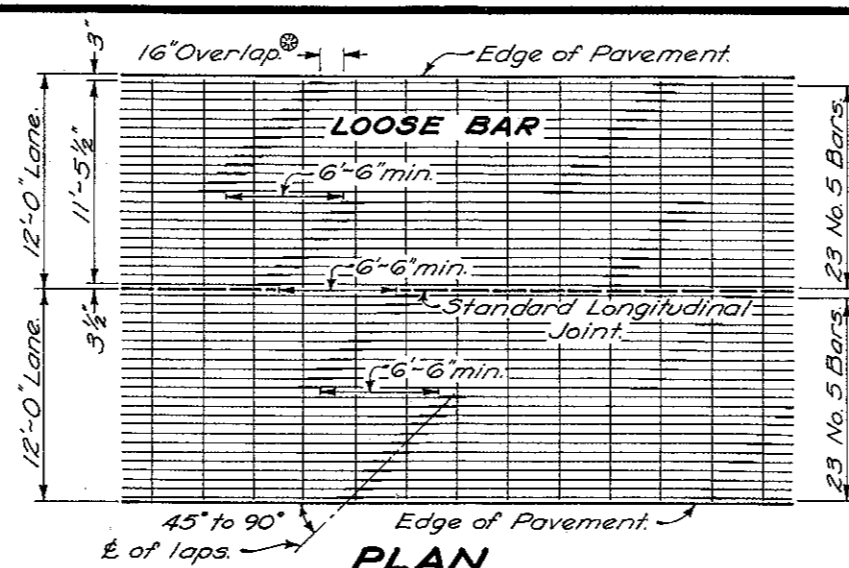


PLAN

709.09 Fabricated Steel Bar or Rod Mats.
 Steel Requirements: 46 No. 5 bars = 14.11 sq. in. = 0.612 % of the end area of an 8' x 24'-0" slab. Minimum length of mat 30'.

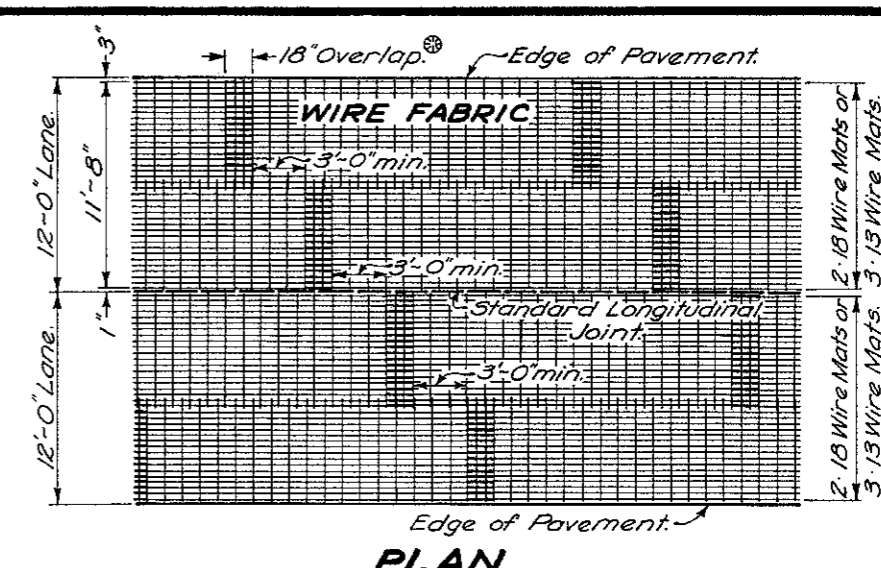
⊛ No lap shall occur within 8' ahead or 3' behind a construction joint in the direction of paving.



PLAN

709.01 Deformed Billet Steel Bars.
 Steel Requirements: 46 No. 5 bars = 14.11 sq. in. = 0.612 % of the end area of an 8' x 24'-0" slab. Minimum bar length 40'.

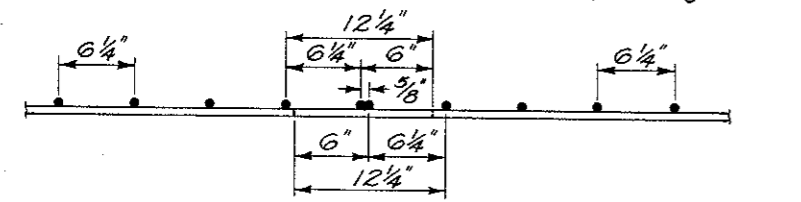
⬥ If 23'-8" bars are used omit tie bars.



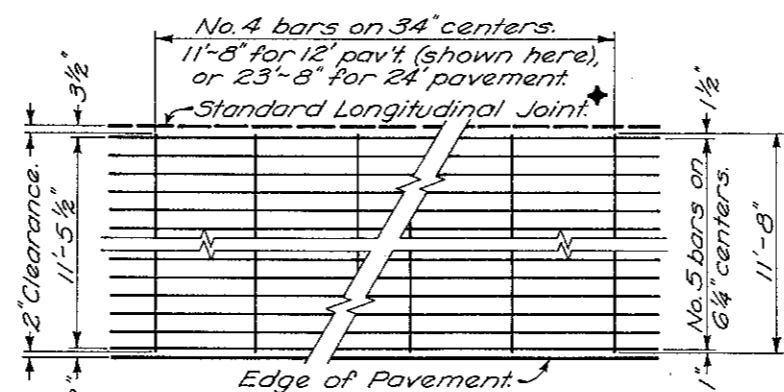
PLAN

709.12 Welded Deformed Steel Wire Fabric.
 Steel Requirements: 72 (D-196) wires = 14.11 sq. in. = 0.612 % of the end area of an 8' x 24'-0" slab. Minimum length of fabric 30'.

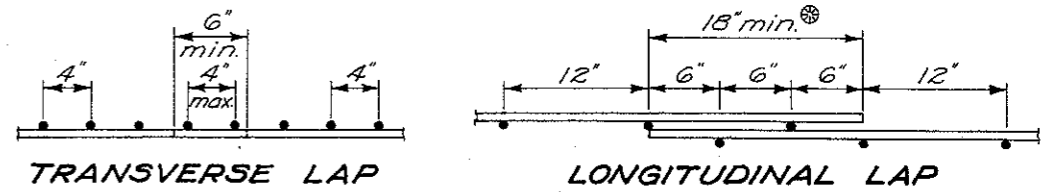
* D-6 wires (0.276" dia.) on 18" centers may be used in lieu of the D-4 wires on 12" centers.



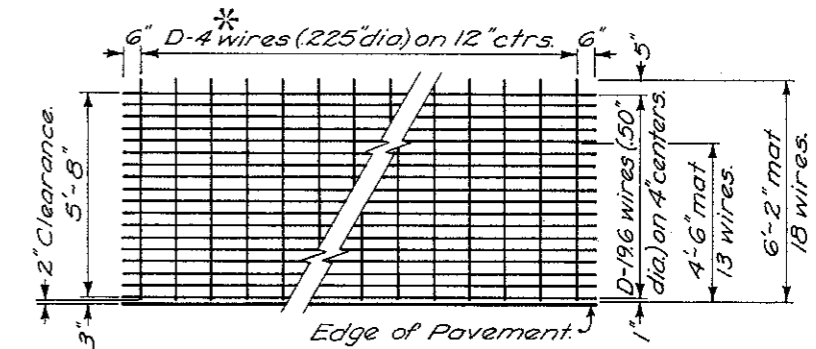
TRANSVERSE LAP



LOOSE BAR DETAIL
LOOSE BAR CONSTRUCTION



TRANSVERSE LAP **LONGITUDINAL LAP**

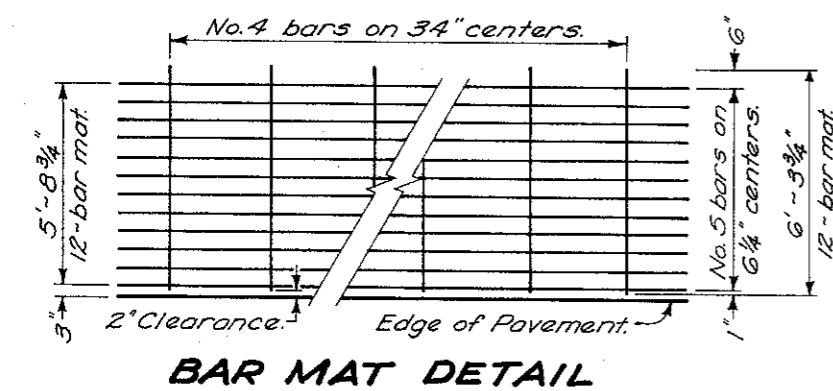


WIRE FABRIC DETAIL
WELDED DEFORMED WIRE FABRIC

NOTES

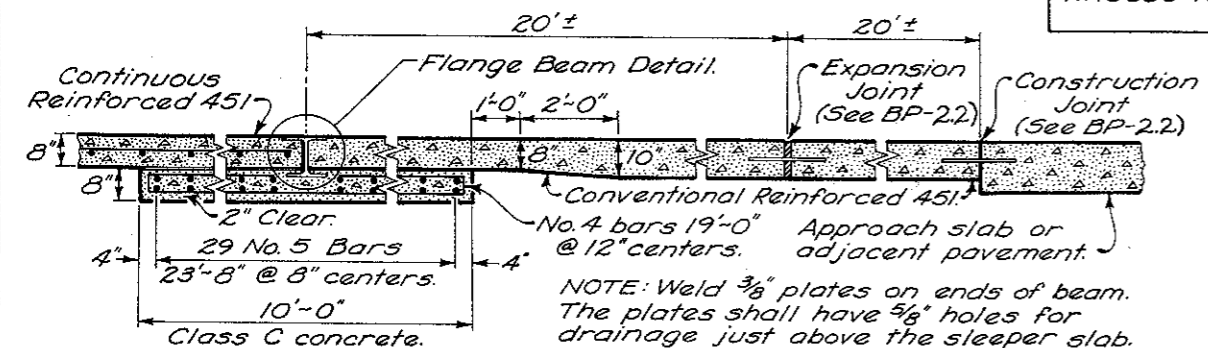
All reinforcing steel shall be placed in the concrete so that the longitudinal steel is located between a minimum cover of 2 1/2" and a maximum depth of 4".

All longitudinal laps shall be tied so as to provide continuous longitudinal reinforcing.



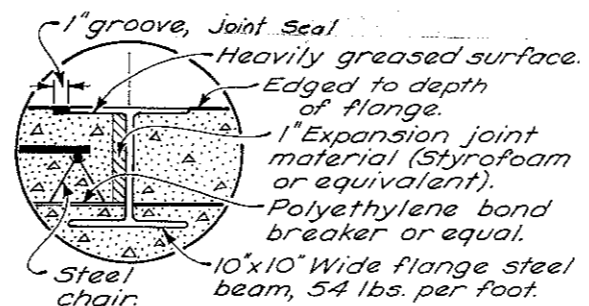
BAR MAT DETAIL

PREFABRICATED BAR MAT

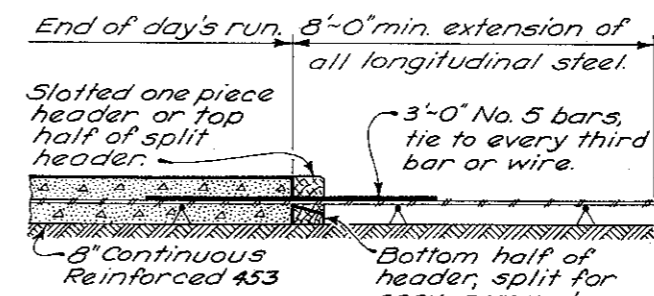


FLANGE BEAM JOINT

NOTE: Weld 3/8" plates on ends of beam. The plates shall have 5/8" holes for drainage just above the sleeper slab.



FLANGE BEAM DETAIL



CONSTRUCTION JOINT

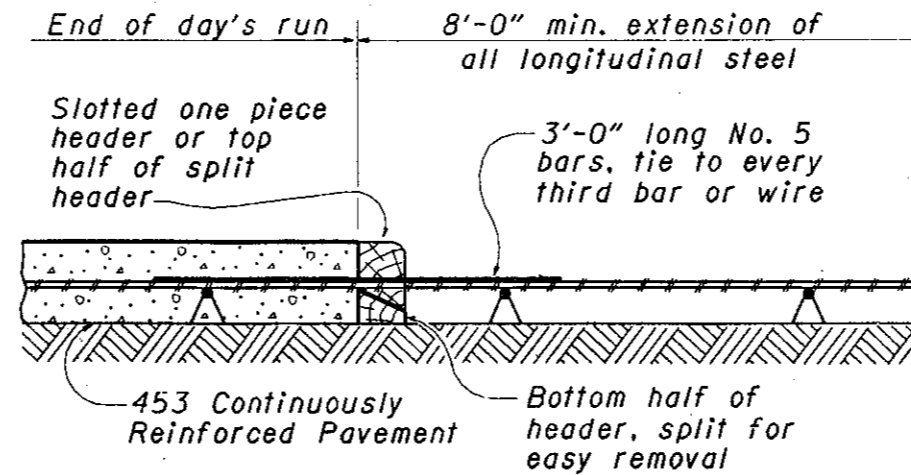
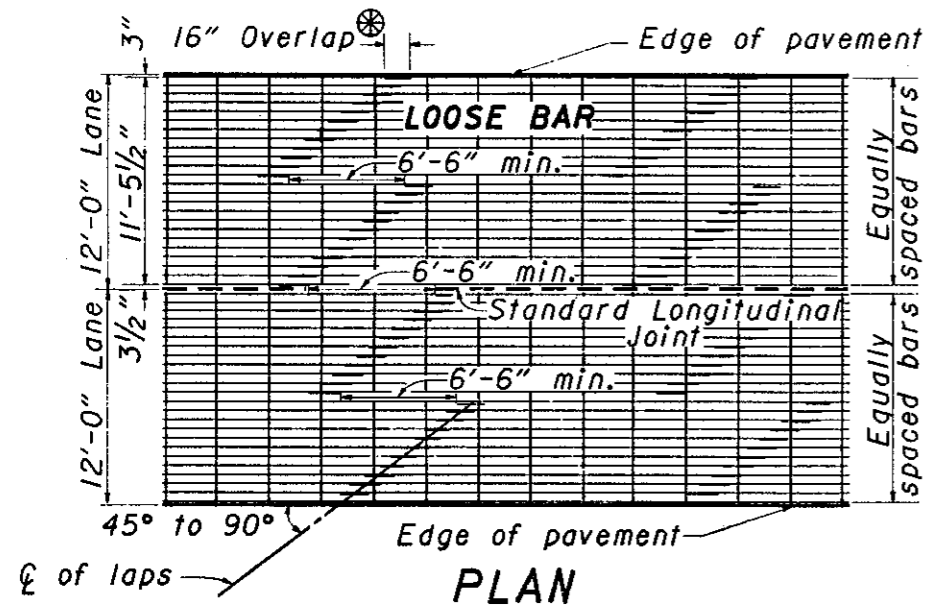
BUREAU OF LOCATION AND DESIGN
OHIO DEPARTMENT OF HIGHWAYS

CONTINUOUSLY REINFORCED PAVEMENT

DATE: 10-1-'67, 11-1-'67, 7-25-'69, 1-1-'70, 5-20-'70, 10-1-'87

STANDARD CONSTRUCTION DRAWING **BP-1.2**

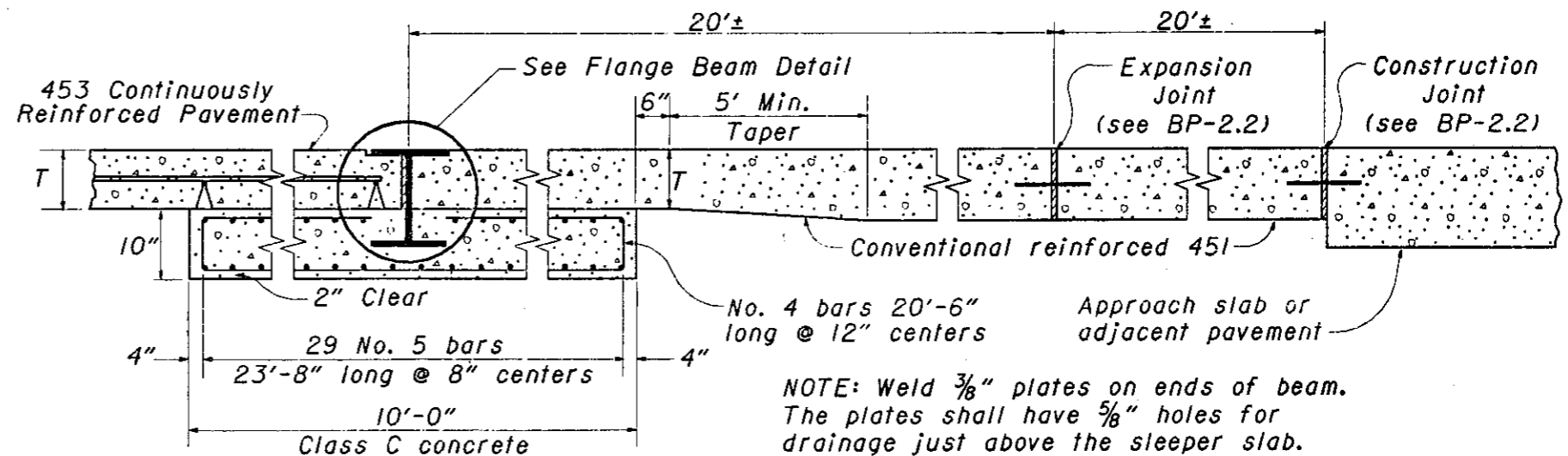
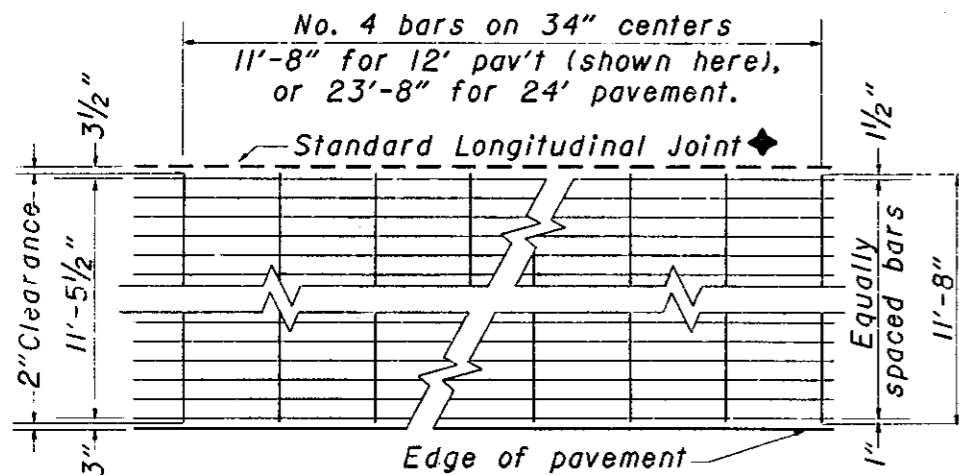
APPROVED: *[Signature]* ENGR. L. & D.



NOTES

- ALL REINFORCING STEEL shall be placed in the concrete so that the longitudinal steel is located between a minimum cover of 2 1/2" and a maximum depth of T/2.
- ALL LONGITUDINAL LAPS shall be tied so as to provide continuous longitudinal reinforcing.
- ALL 709.03 BARS shall be epoxy coated as per 709.00 and shall be set on chairs ahead of paving operation. Minimum bar length 40'.
- No lap shall occur within 8' ahead or 3' behind a construction joint in the direction of paving.
- If 23'-8" bars are used, omit tie bars.

CONSTRUCTION JOINT

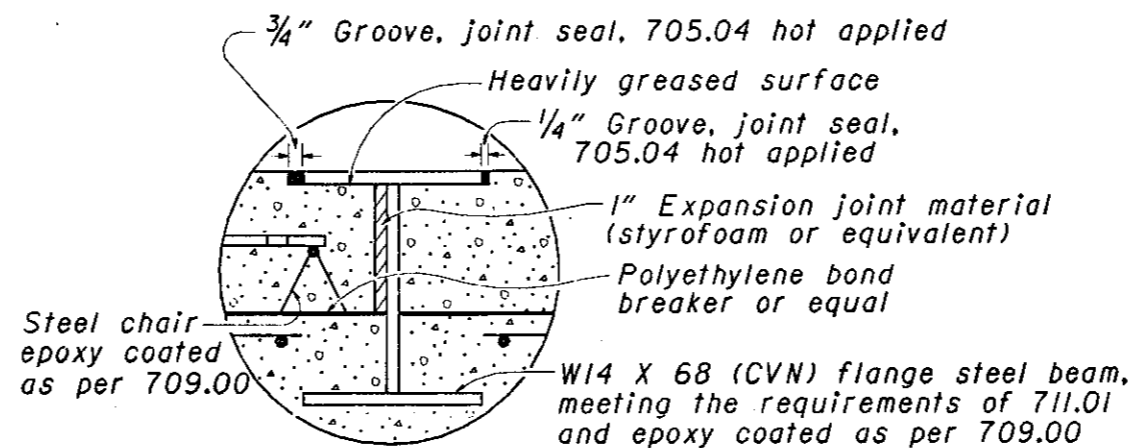


NOTE: Weld 3/8" plates on ends of beam. The plates shall have 5/8" holes for drainage just above the sleeper slab.

LOOSE BAR DETAIL

FLANGE BEAM JOINT

STEEL REQUIREMENTS		
T (in.)	Bar Size	No. Bars/12' Lane
8	5	23
9	6	18
10	6	20
11	6	22
12	7	18
13	7	20
14	7	21



FLANGE BEAM DETAIL

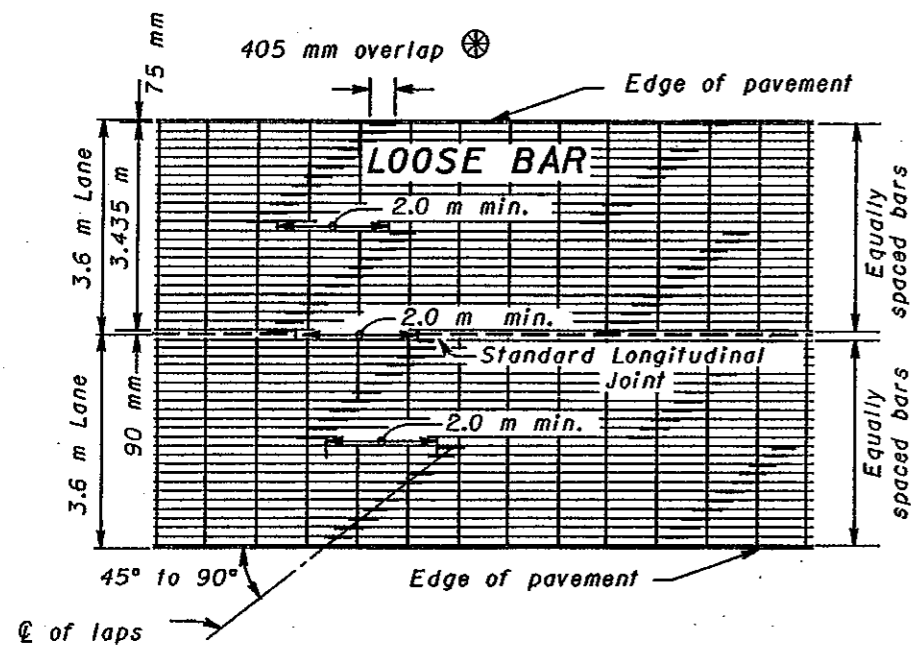
BUREAU OF LOCATION AND DESIGN
OHIO DEPARTMENT OF TRANSPORTATION

CONTINUOUSLY REINFORCED PAVEMENT

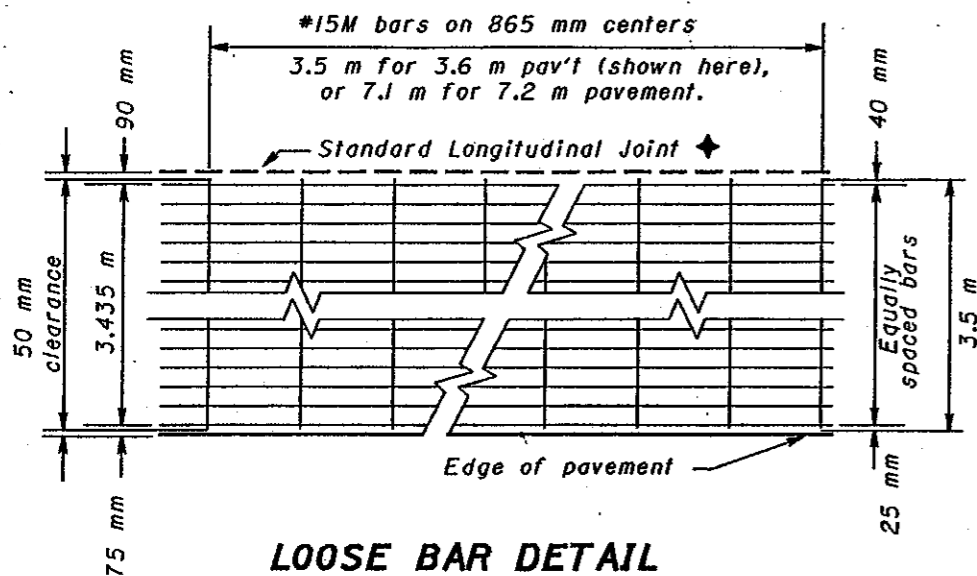
STANDARD CONSTRUCTION DRAWING
APPROVED *B.K. Hulman* ENGR., L & D

BP-1.2

DATE 2-21-92

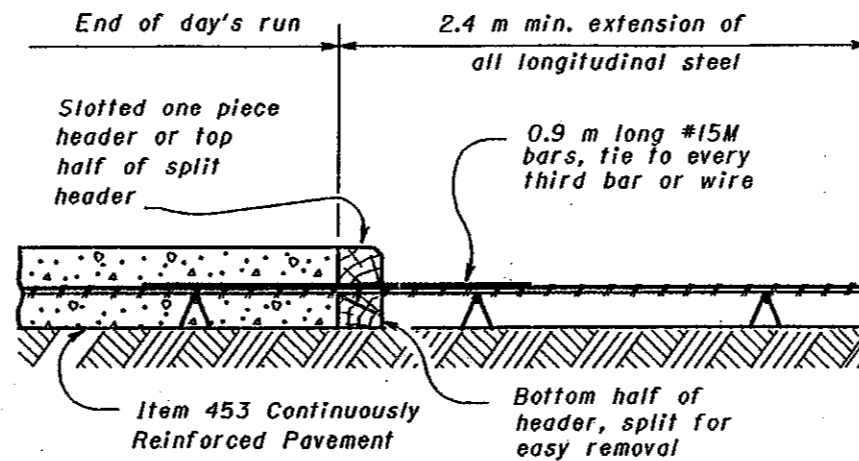


PLAN

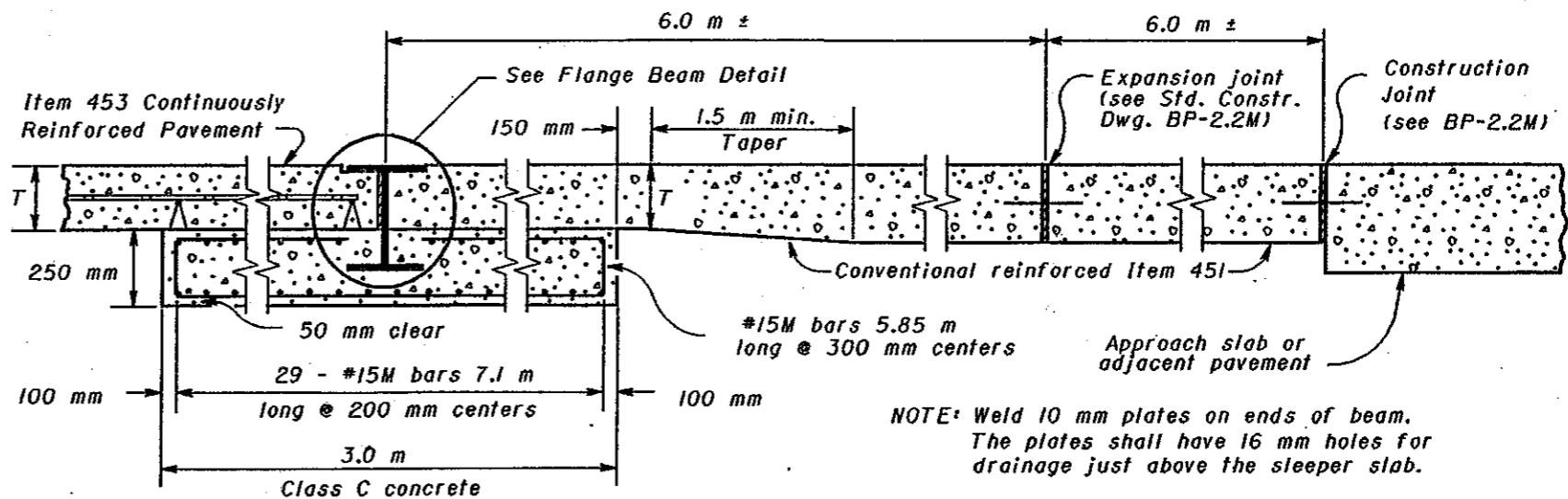


LOOSE BAR DETAIL

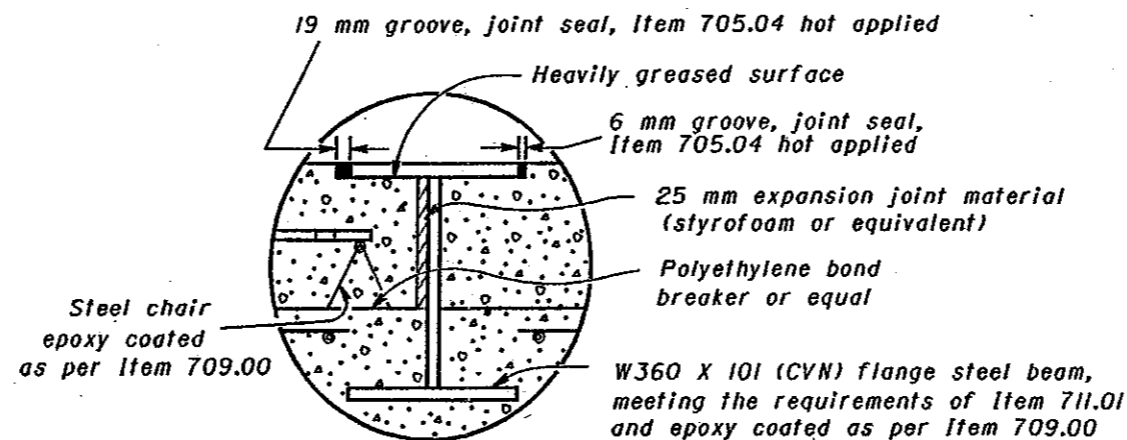
STEEL REQUIREMENTS		
T (mm)	Bar Size	No. Bars per 3.6 m Lane
200	#15M	23
230	#20M	18
250	#20M	20
280	#20M	22
300	#25M	18
330	#25M	20
360	#25M	21



CONSTRUCTION JOINT



FLANGE BEAM JOINT



FLANGE BEAM DETAIL

NOTES

REINFORCING STEEL: All steel shall be placed in the concrete so that the longitudinal steel is located between a minimum cover of 65 mm and a maximum depth of T/2.

ALL LONGITUDINAL LAPS: Laps shall be tied so as to provide continuous longitudinal reinforcing.

ITEM 709.03 BARS: All bars shall be epoxy coated as per Item 709.00 and shall be set on chairs ahead of paving operation. Minimum bar length 12.2 m.

⊗ No lap shall occur within 2.4 m ahead or 0.9 m behind a construction joint in the direction of paving.

◆ If 7.2 m bars are used, omit tie bars.

NOTE: Weld 10 mm plates on ends of beam. The plates shall have 16 mm holes for drainage just above the sleeper slab.



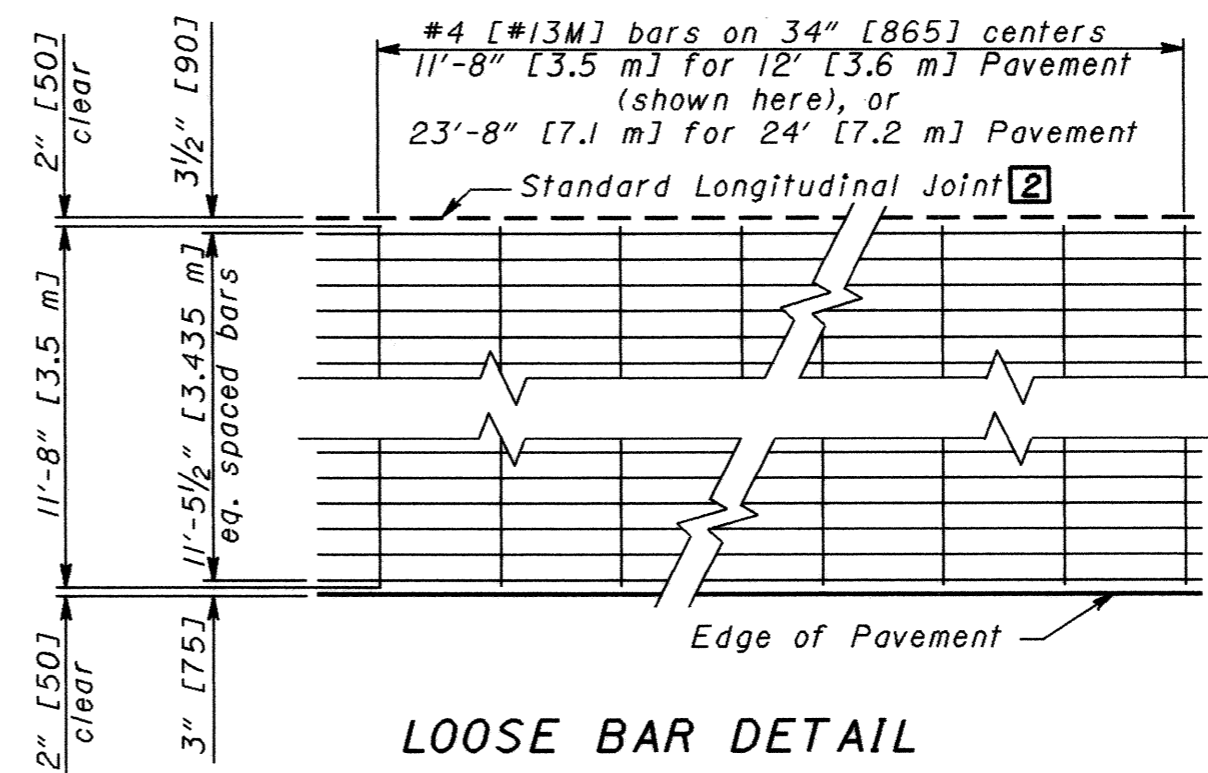
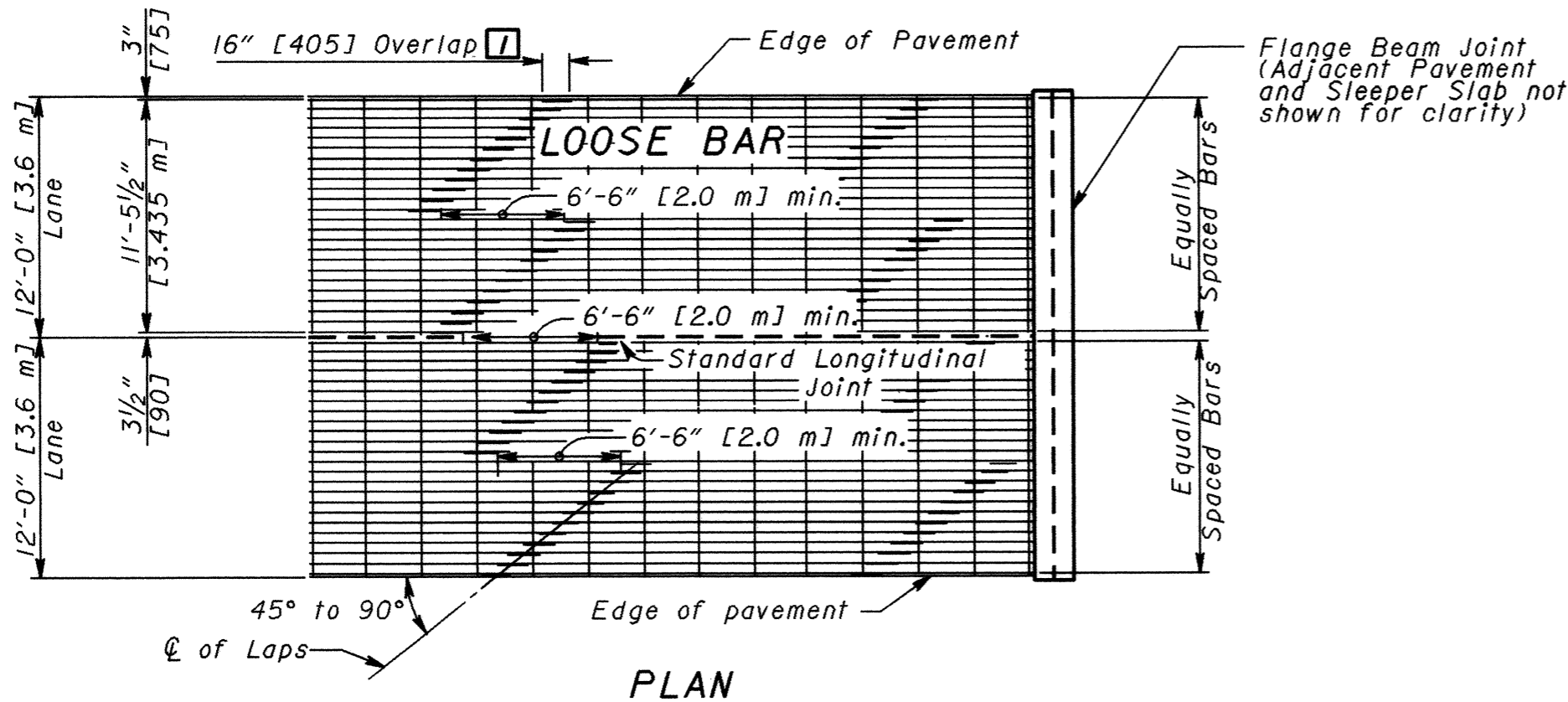
BUREAU OF LOCATION AND DESIGN
OHIO DEPARTMENT OF TRANSPORTATION

CONTINUOUSLY REINFORCED PAVEMENT

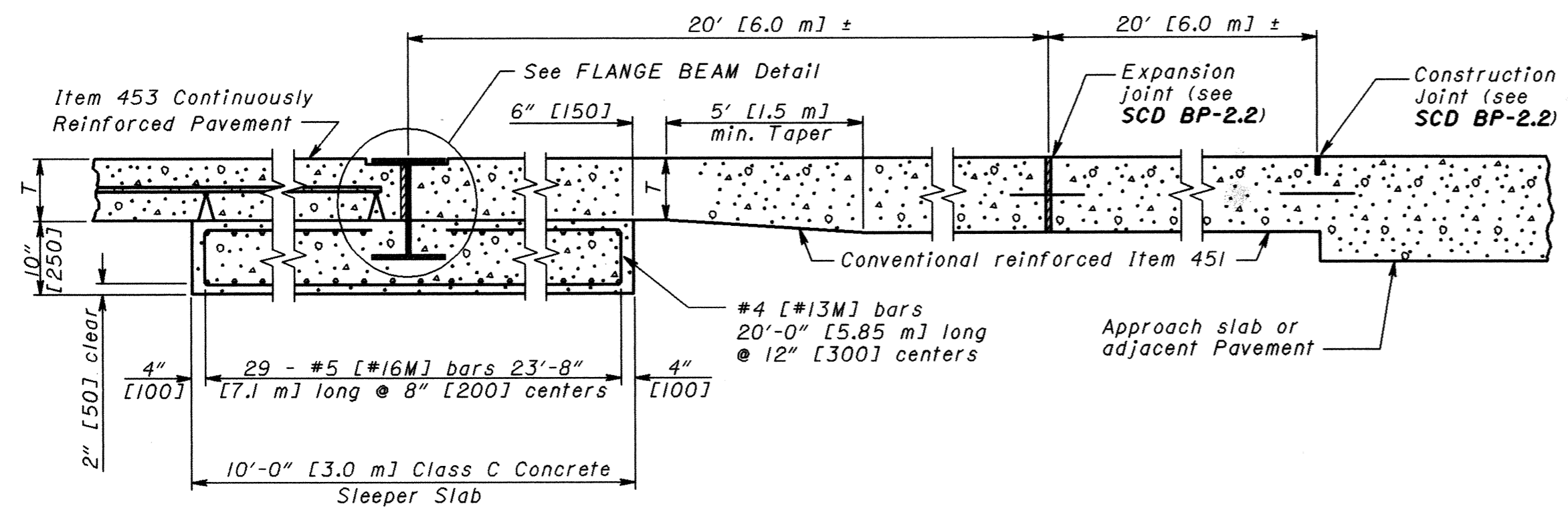
DATE 10-28-94

STANDARD CONSTRUCTION DRAWING **BP-1.2M**

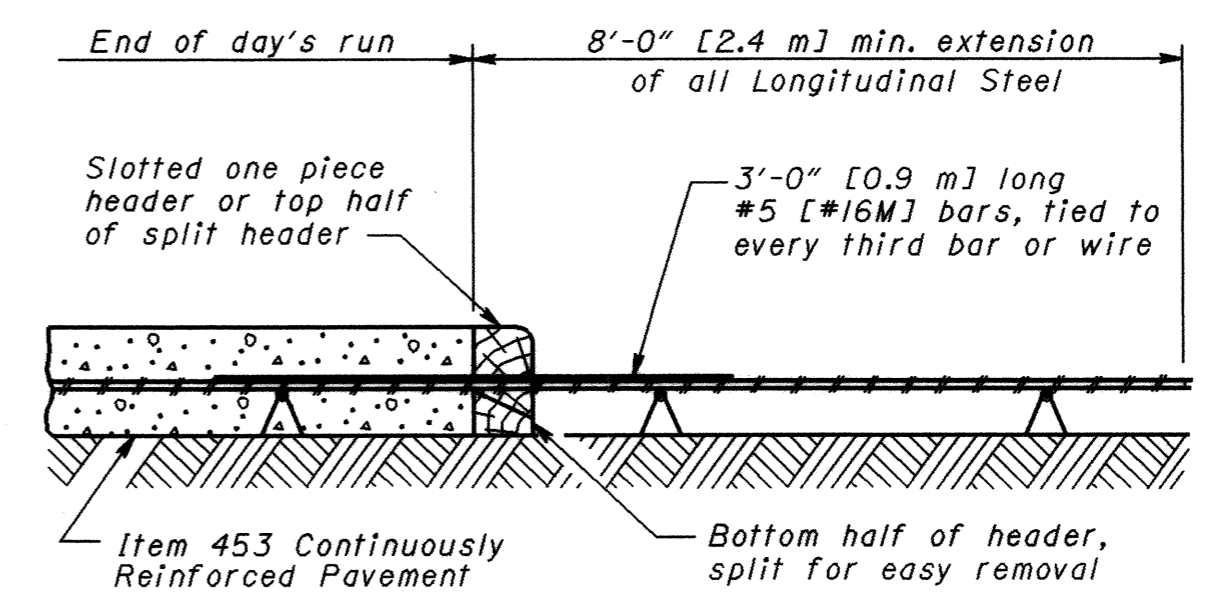
APPROVED *D.K. Ahlman*
ENGR., L & D



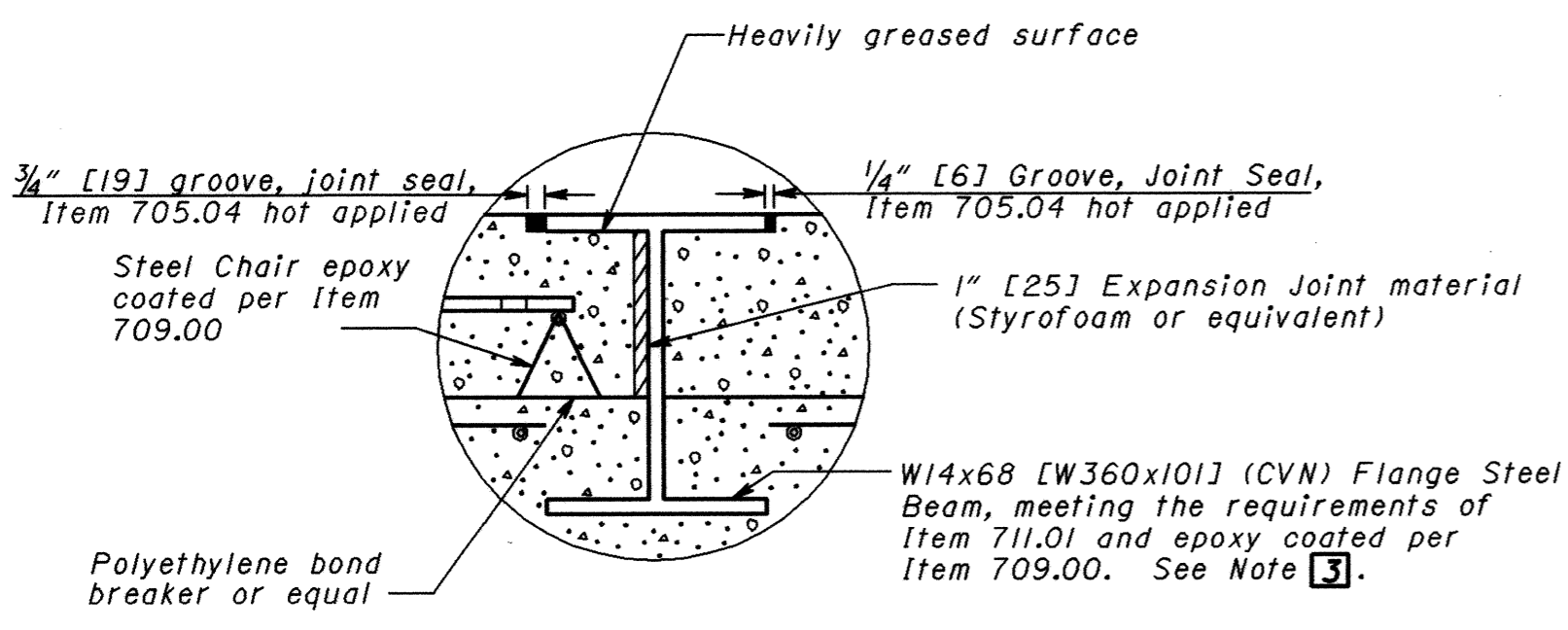
LOOSE BAR DETAIL



FLANGE BEAM JOINT



CONSTRUCTION JOINT



FLANGE BEAM DETAIL

STEEL REQUIREMENTS		
T	Bar Size	No. Bars per 12' [3.6 m] Lane
8" [200]	#5 [#16M]	23
9" [230]	#6 [#19M]	18
10" [250]	#6 [#19M]	20
11" [280]	#6 [#19M]	22
12" [300]	#7 [#22M]	18
13" [330]	#7 [#22M]	20
14" [360]	#7 [#22M]	21

NOTES

- REINFORCING STEEL:** All steel shall be placed in the concrete so that the longitudinal steel is located between a minimum cover of 2 1/2" [65] and a maximum depth of T/2.
- ALL LONGITUDINAL LAPS:** Laps shall be tied so as to provide continuous longitudinal reinforcing.
- ITEM 709.03 BARS:** All bars shall be epoxy coated per Item 709.00 and shall be set on chairs ahead of the paving operation. Minimum bar length is 40' [12.2 m].

LEGEND

- [1] No lap shall occur within 8' [2.4 m] ahead or 3' [0.9 m] behind a construction joint in the direction of paving.
- [2] If 23'-8" [7.2 m] bars are used, omit tie bars.
- [3] Weld 3/8" [10] plates on ends of beam. The plates shall have 5/8" [16] holes for drainage just above the sleeper slab.

THIS DRAWING REPLACES BP-1.2M DATED 10-28-94.

STDS. ENBR. M. EVANS
ROADWAY ENGINEERING SERVICES
OHIO DEPARTMENT OF TRANSPORTATION
REVISIONS
DRAWN D. Focke
DATE 10-28-00
NUMBER BP-1.2
CONTINUOUSLY REINFORCED PAVEMENT