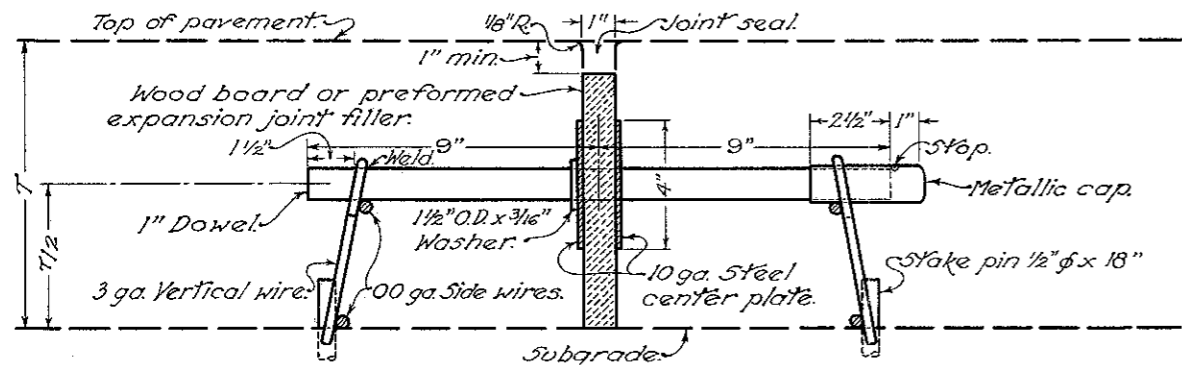


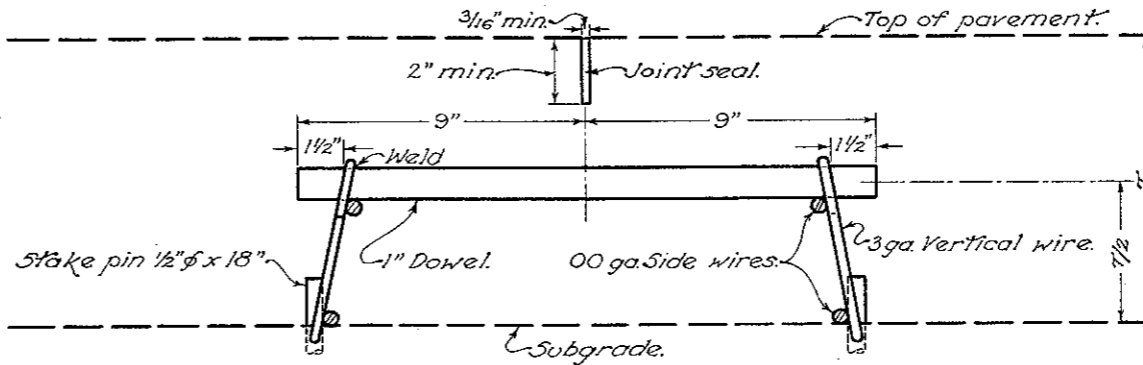
TRANSVERSE JOINTS

EXPANSION JOINT



SECTION THROUGH JOINT

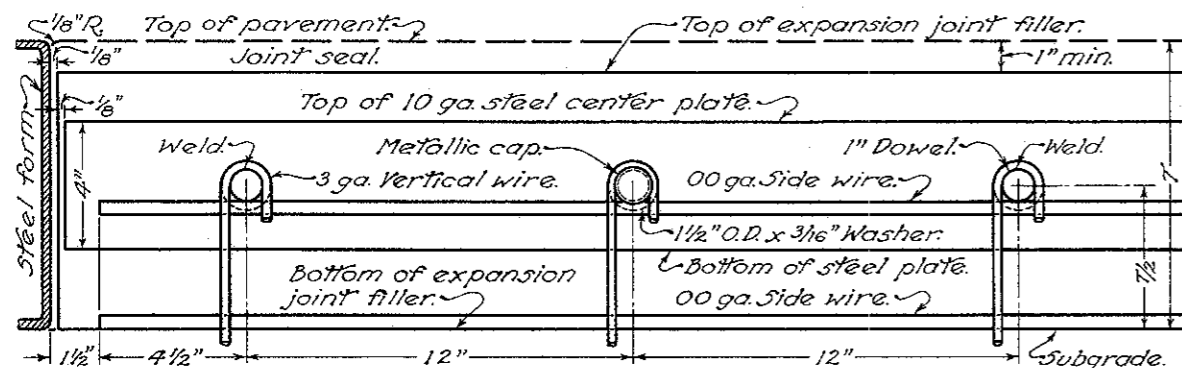
SAWED CONTRACTION JOINT



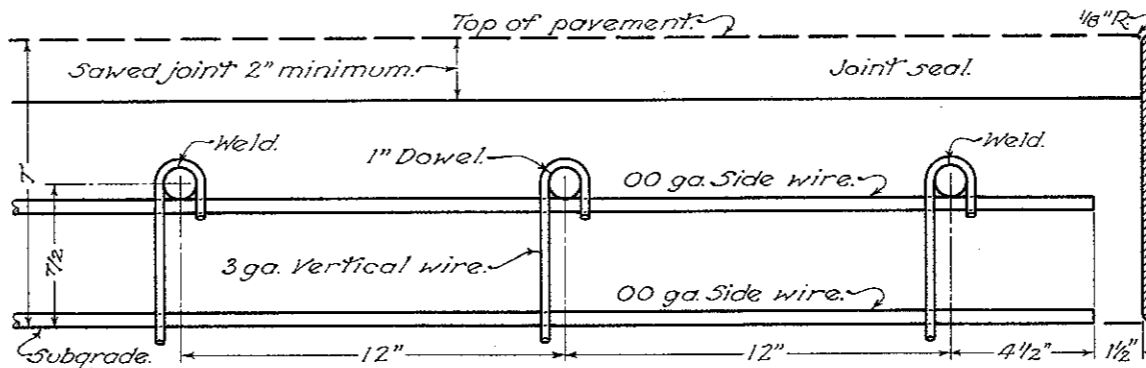
SECTION THROUGH JOINT

NOTES

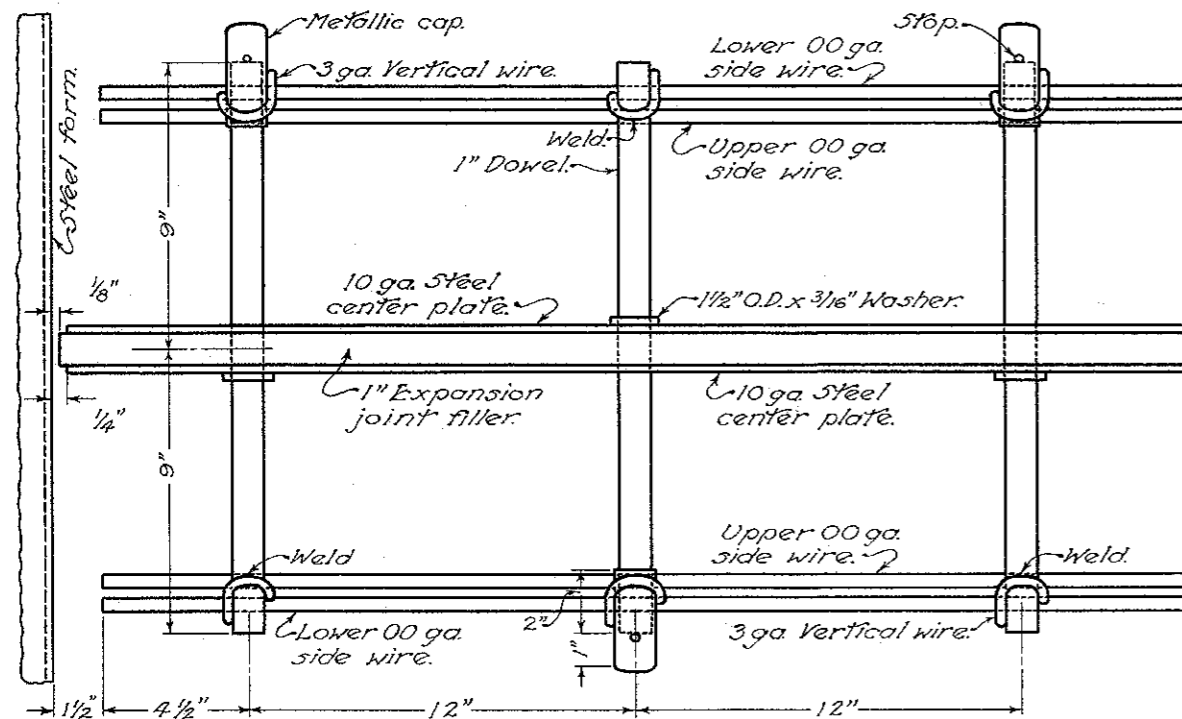
Side wires to be welded to vertical wires at points of contact to form a rigid framework. Washers on the expansion joint assembly shall be welded to the dowel bars and shall be placed on opposite sides of the expansion joint on alternate dowels as shown.



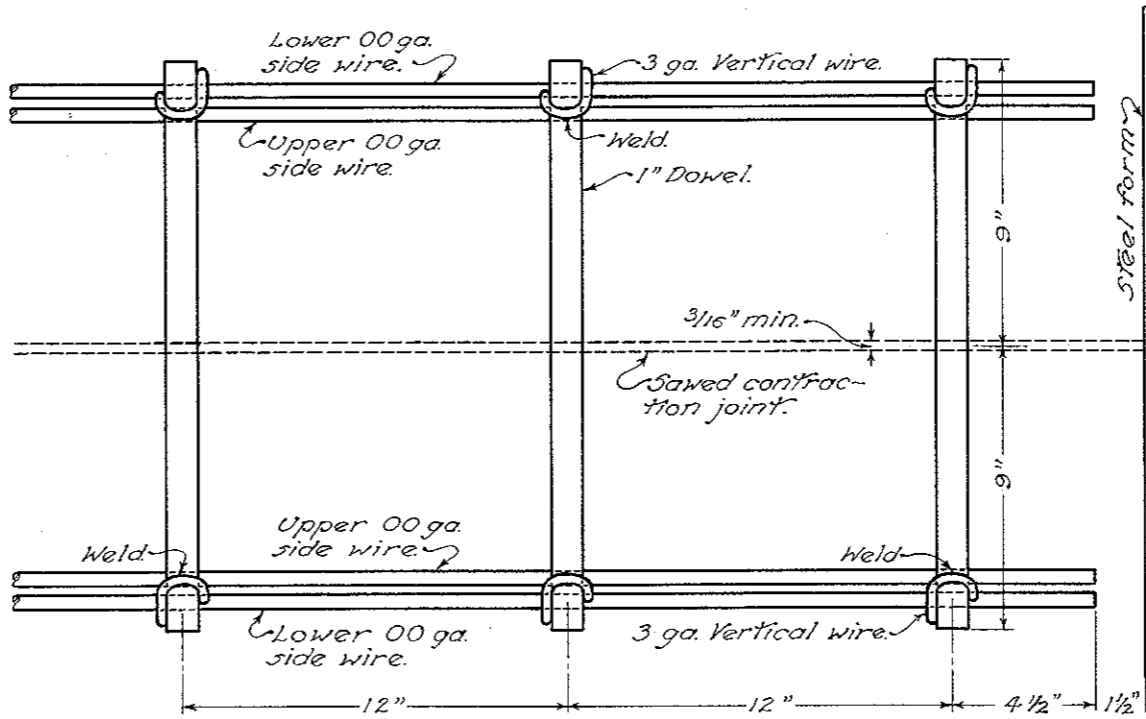
SIDE ELEVATION



SIDE ELEVATION



PLAN



PLAN

BUREAU OF LOCATION AND DESIGN
OHIO DEPARTMENT OF HIGHWAYS

PAVEMENT
JOINT ASSEMBLY
NO. 11

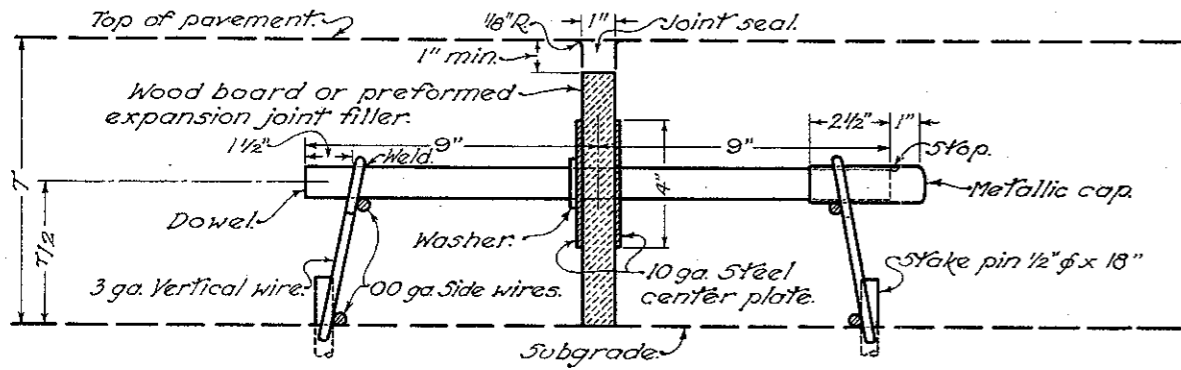
DATE
5-21-58

APPROVED

W. J. Stinson
ENGINEER OF LOCATION & DESIGN

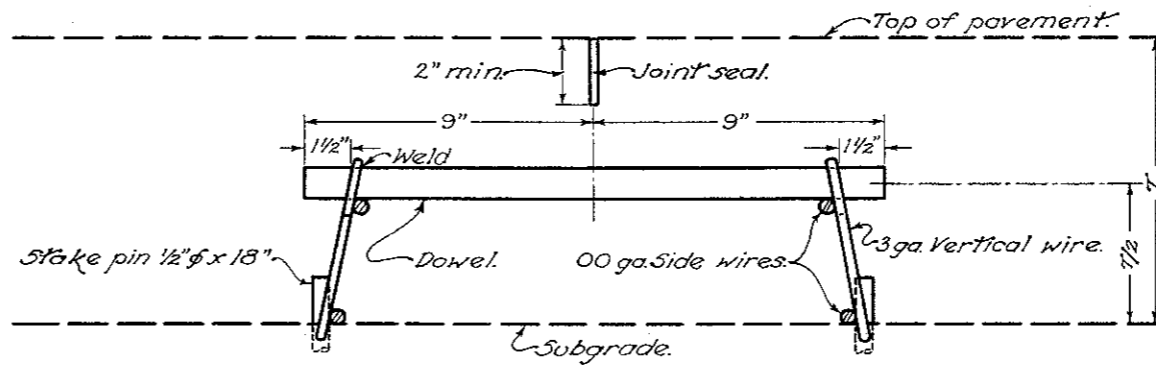
TRANSVERSE JOINTS

EXPANSION JOINT



SECTION THROUGH JOINT

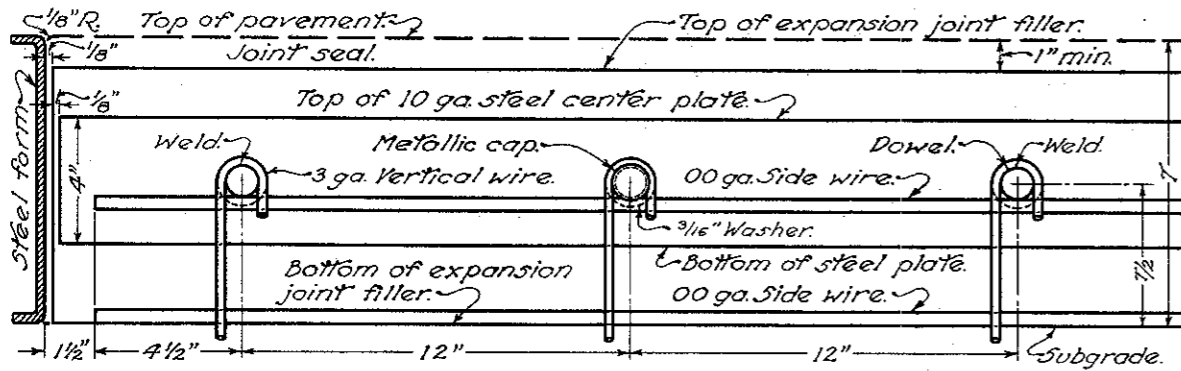
SAWED CONTRACTION JOINT



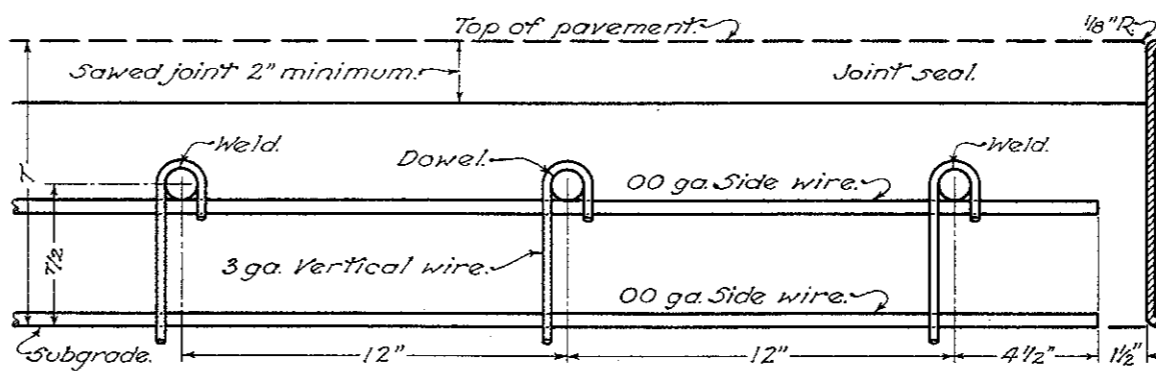
SECTION THROUGH JOINT

NOTES

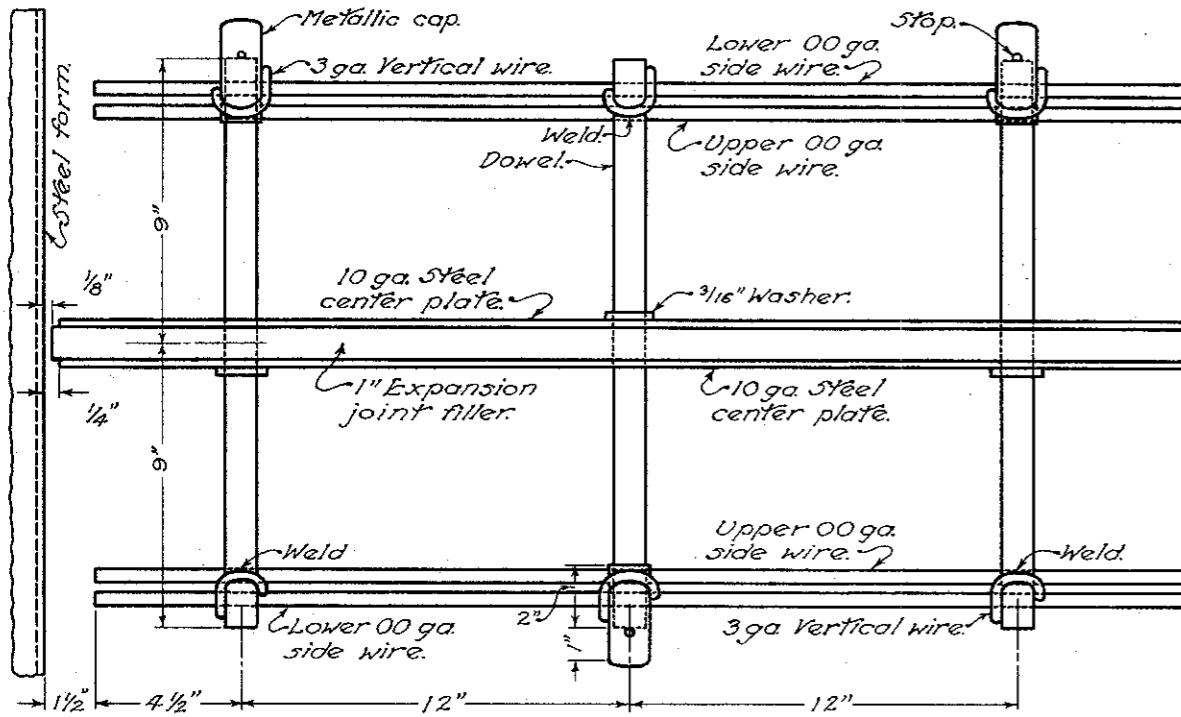
Side wires to be welded to vertical wires at points of contact to form a rigid framework.
 Washers on the expansion joint assembly shall be welded to the dowel bars and shall be placed on opposite sides of the expansion joint on alternate dowels as shown.
 This joint assembly shall meet the requirements of Standard Drawing "T.J."
 Top of expansion joint material shall be protected by a metal cap during the placing and finishing of concrete pavement.



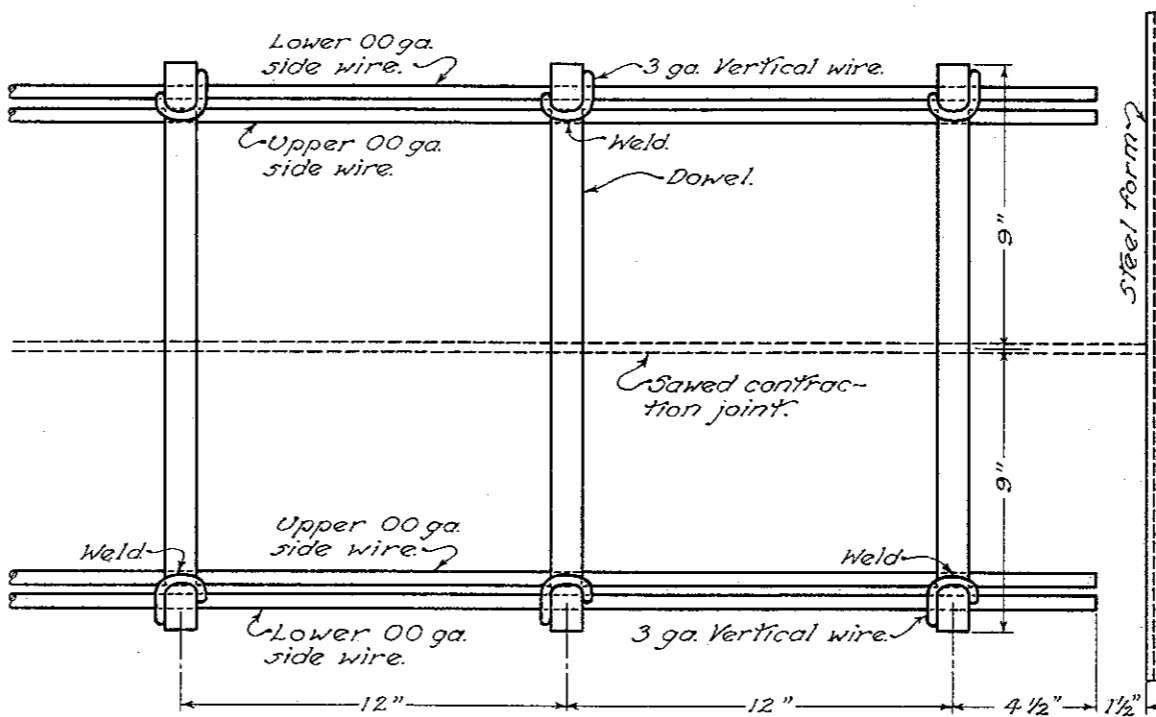
SIDE ELEVATION



SIDE ELEVATION



PLAN



PLAN

BUREAU OF LOCATION AND DESIGN
 OHIO DEPARTMENT OF HIGHWAYS

PAVEMENT
 JOINT ASSEMBLY
 No. 11

DATE
 5-21-59
 9-12-60

APPROVED

W. J. Gleason
 ENGINEER OF LOCATION & DESIGN