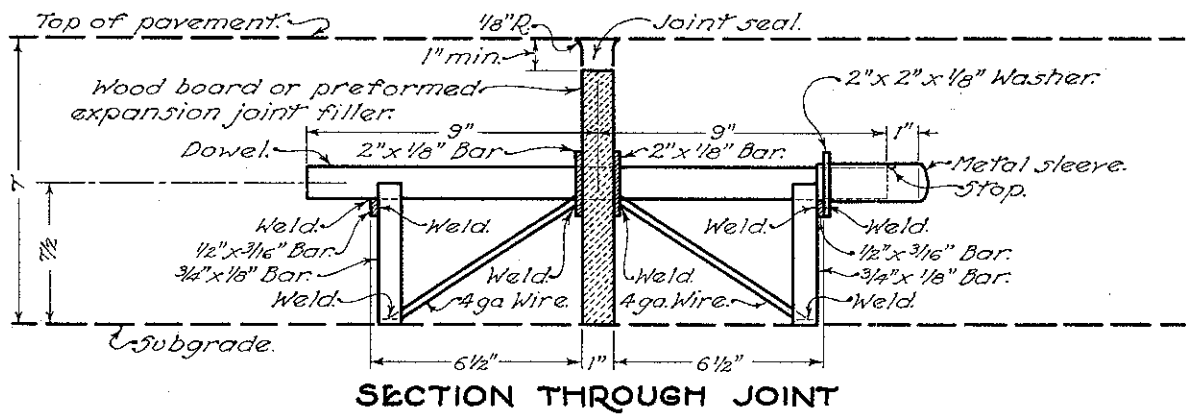
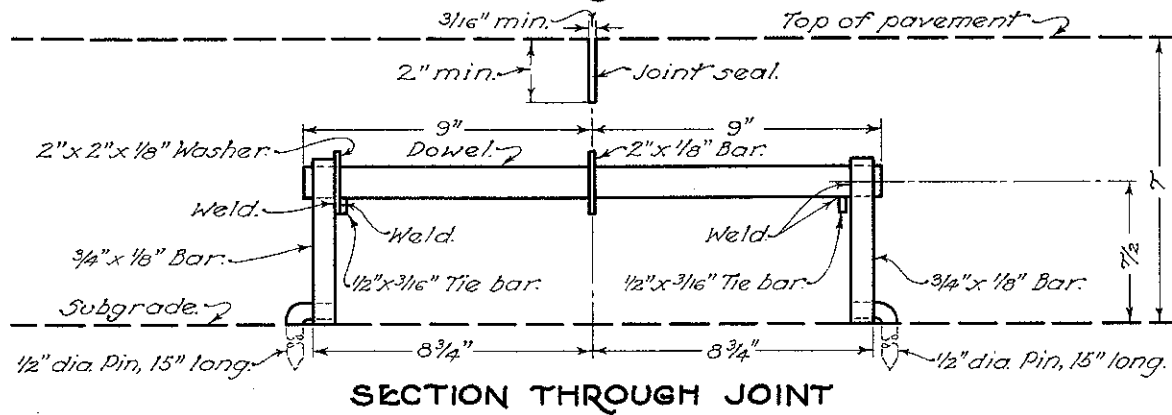


TRANSVERSE JOINTS

EXPANSION JOINT



SAWED CONTRACTION JOINT

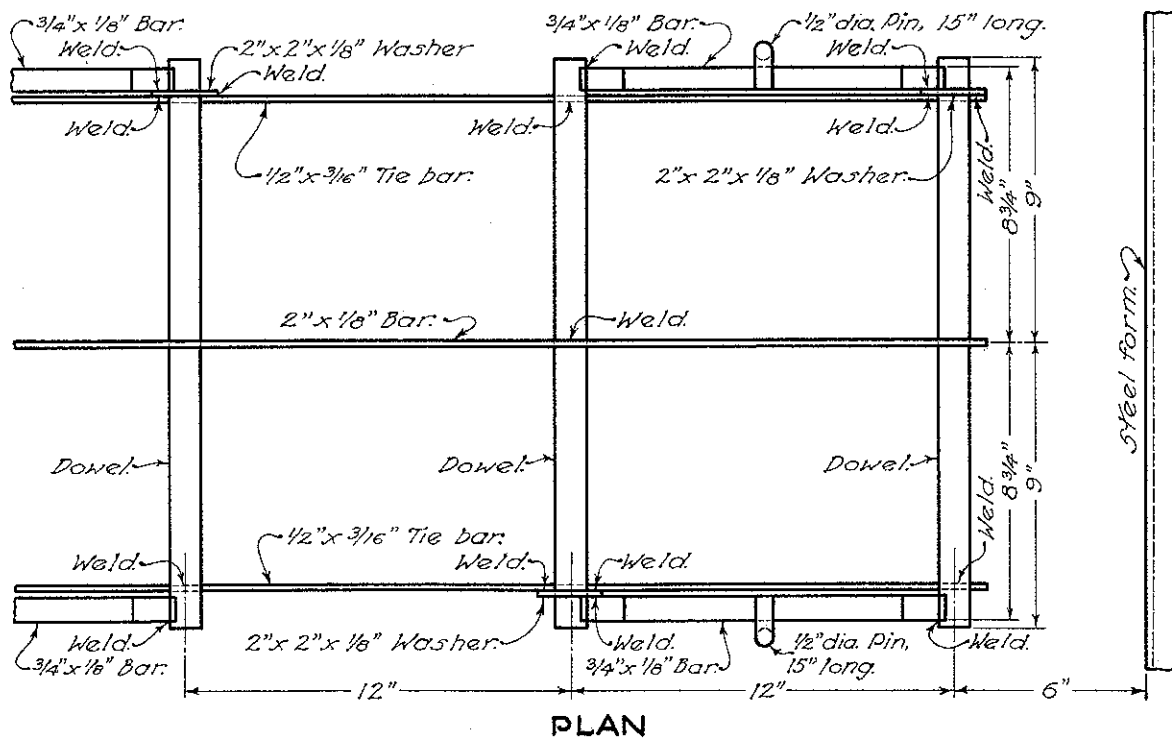
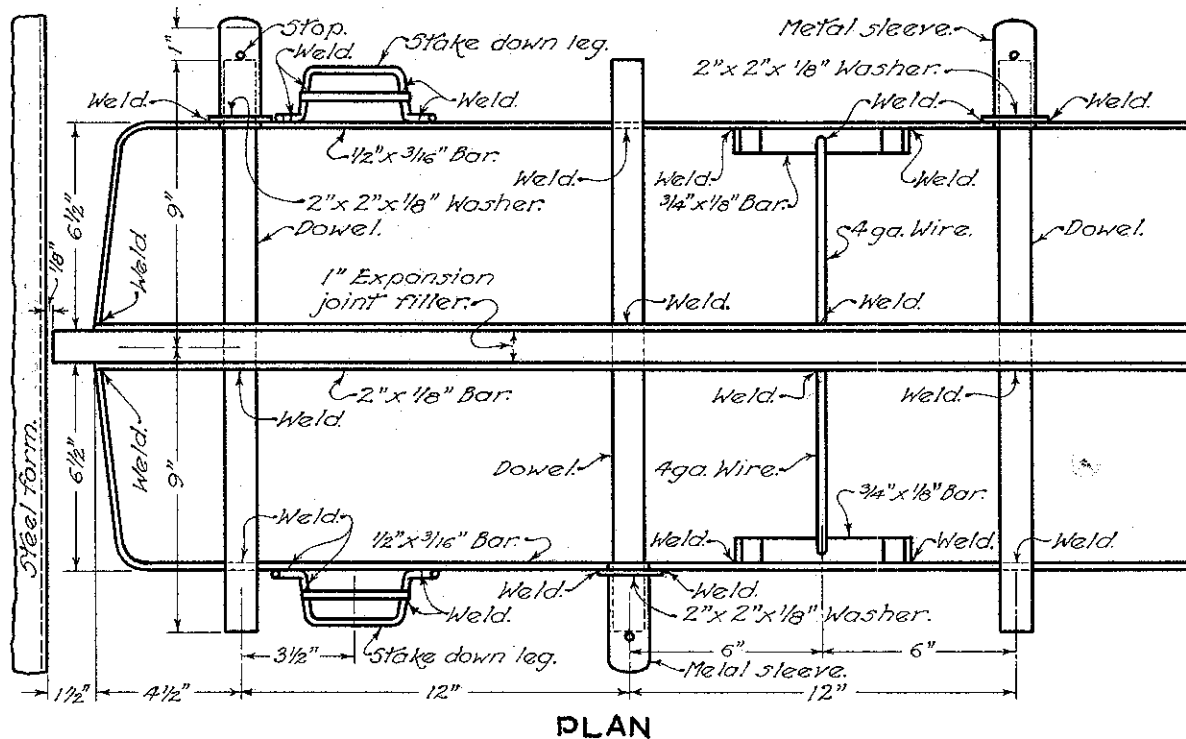
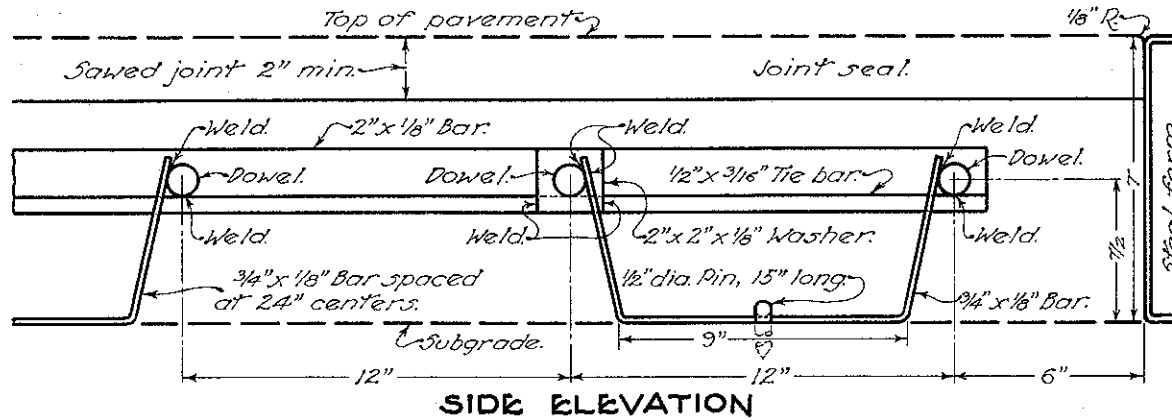
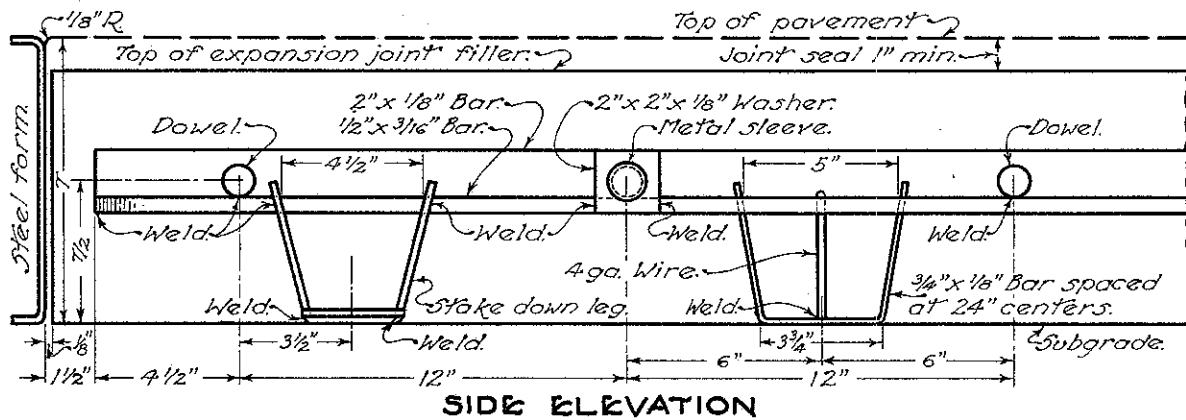


NOTES

This joint assembly shall meet the requirements of Standard drawing "T.J."

Expansion joint material shall be adequately staked to maintain it in a vertical position.

Top of expansion joint material shall be protected by a metal cap during the placing and finishing of concrete pavement.



BUREAU OF LOCATION AND DESIGN
OHIO DEPARTMENT OF HIGHWAYS

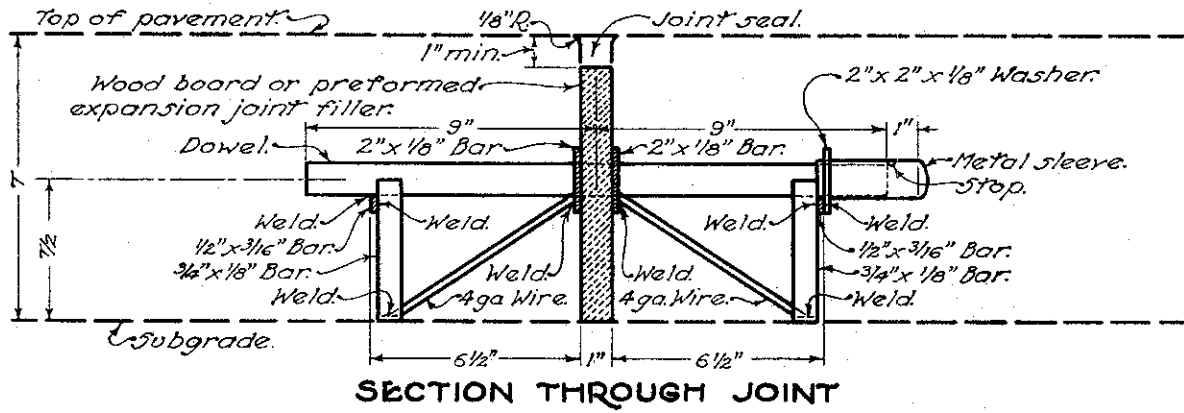
PAVEMENT
JOINT ASSEMBLY
NO. 12

APPROVED
William
ENGINEER OF LOCATION & DESIGN

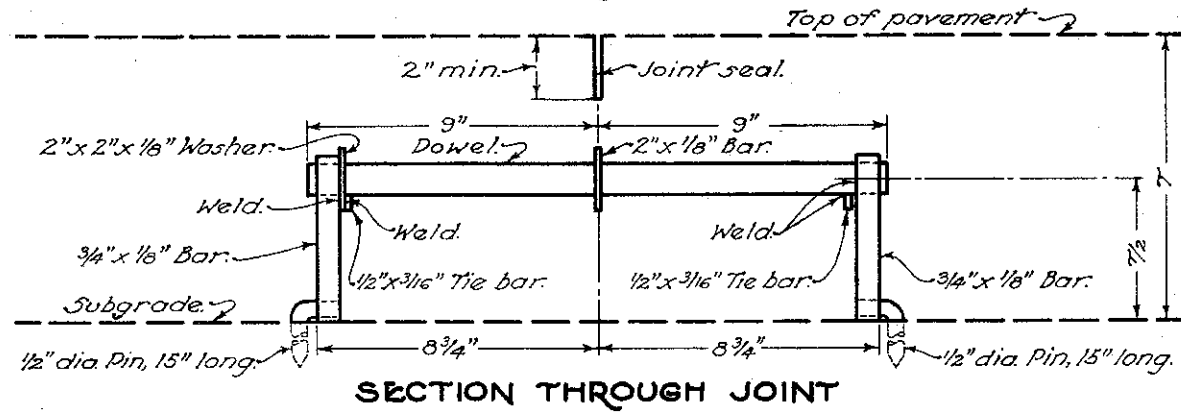
DATE: 4-8-60

TRANSVERSE JOINTS

EXPANSION JOINT



SAWED CONTRACTION JOINT

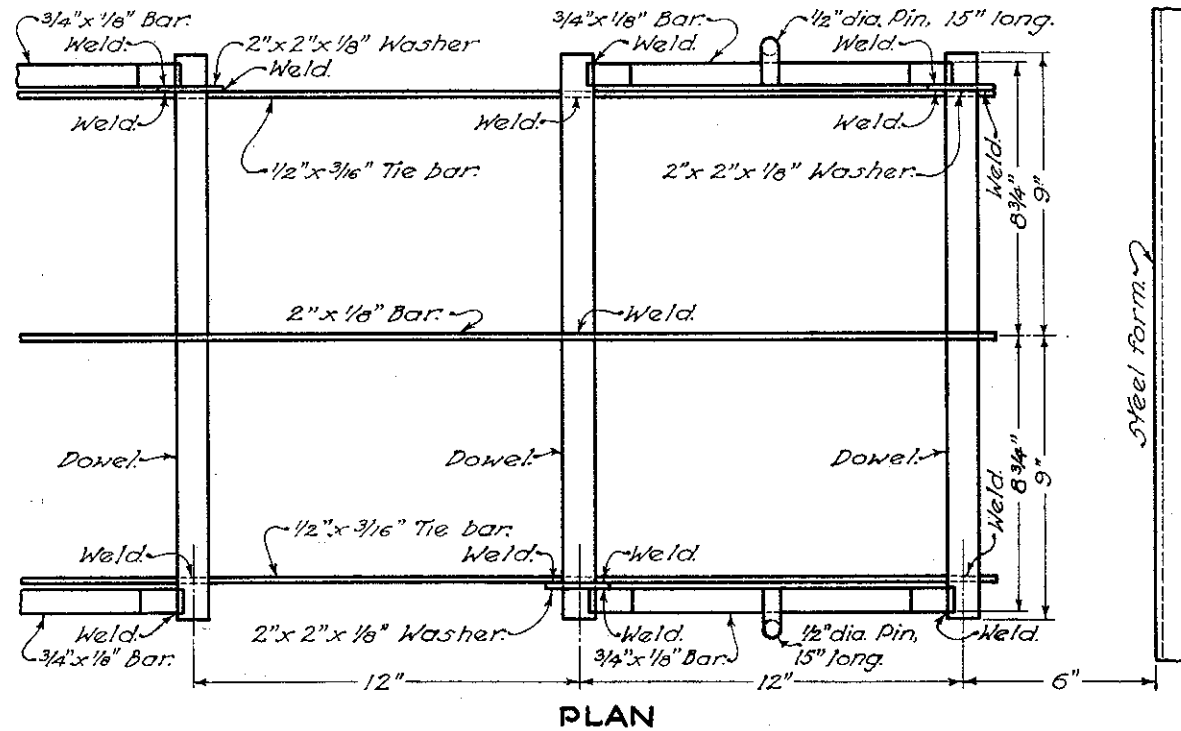
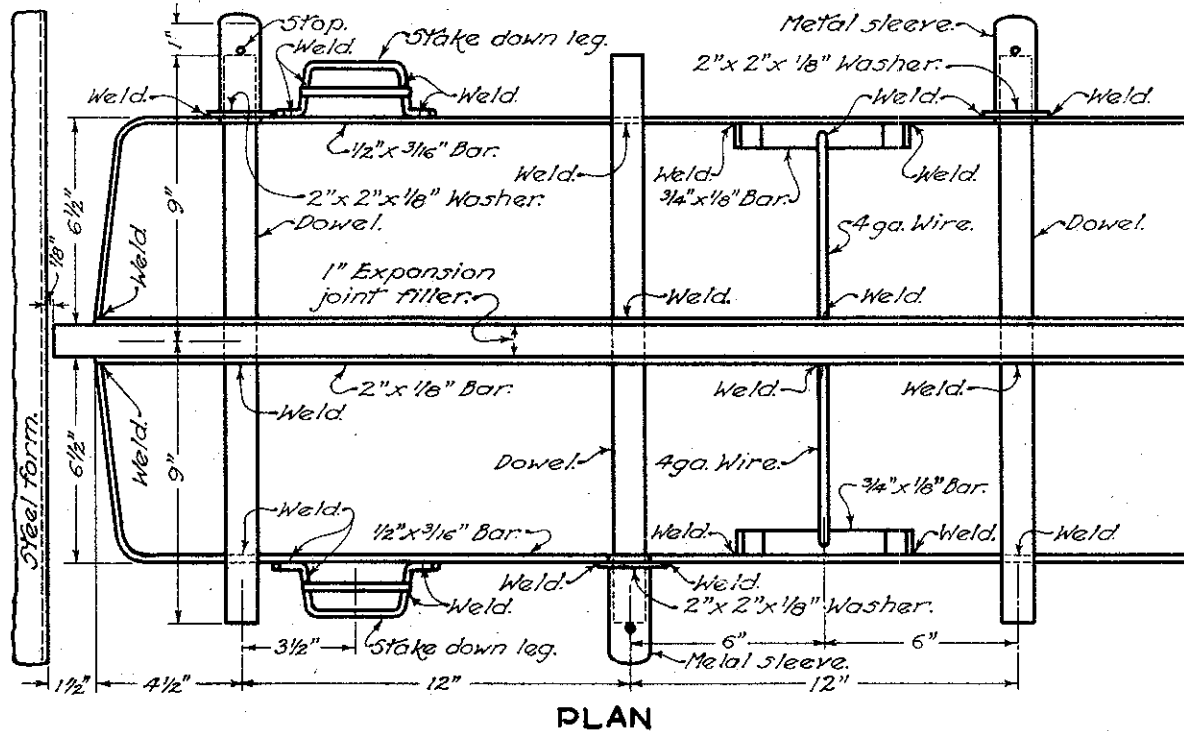
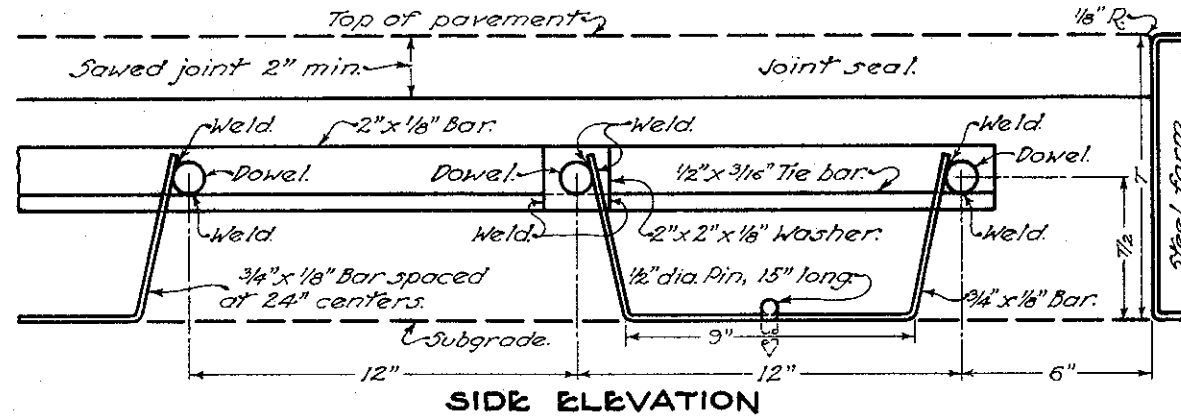
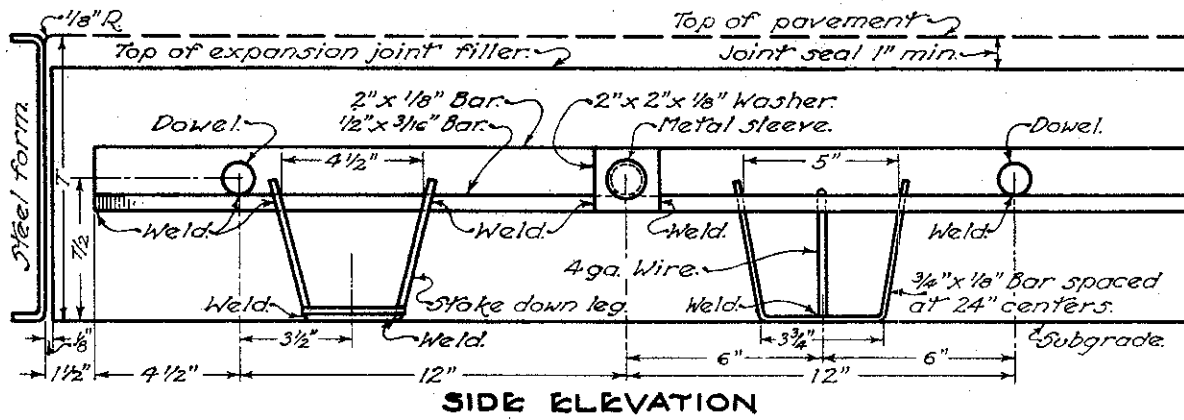


NOTES

This joint assembly shall meet the requirements of Standard drawing "T.J."

Expansion joint material shall be adequately staked to maintain it in a vertical position.

Top of expansion joint material shall be protected by a metal cap during the placing and finishing of concrete pavement.



BUREAU OF LOCATION AND DESIGN
OHIO DEPARTMENT OF HIGHWAYS

PAVEMENT
JOINT ASSEMBLY
NO. 12

APPROVED
[Signature]
ENGINEER OF LOCATION & DESIGN

DATE:
4-8-60
9-12-60