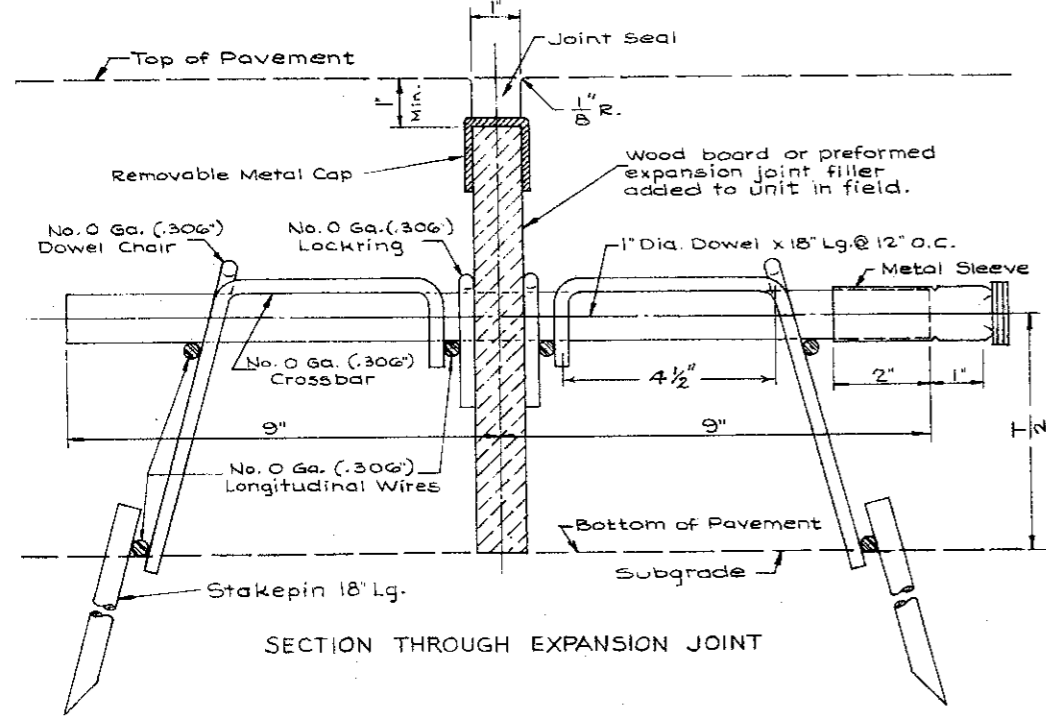
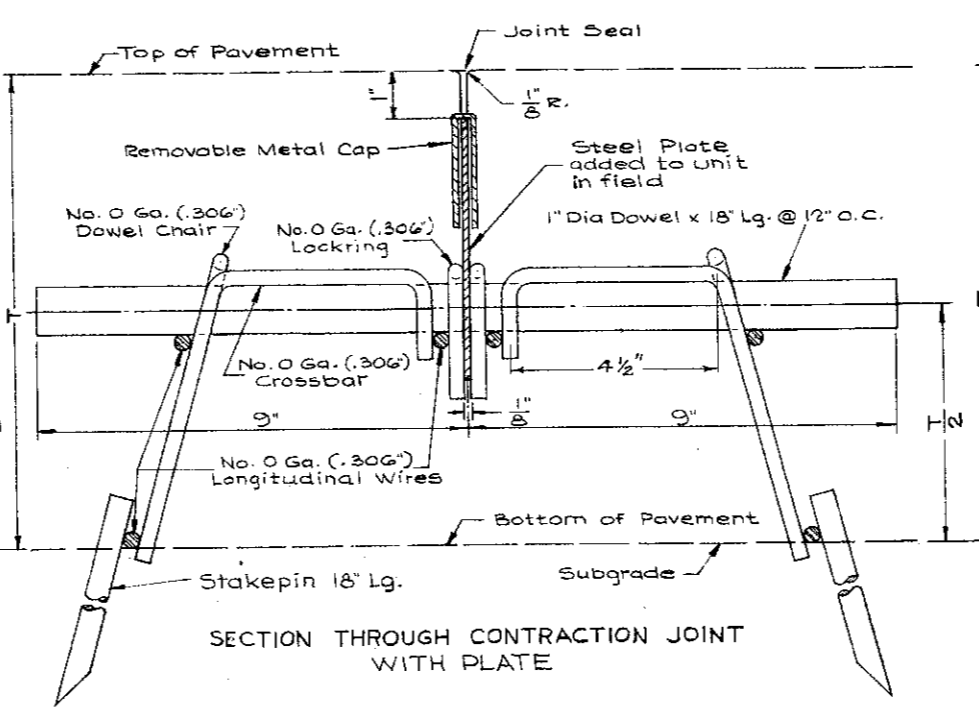


EXPANSION JOINT



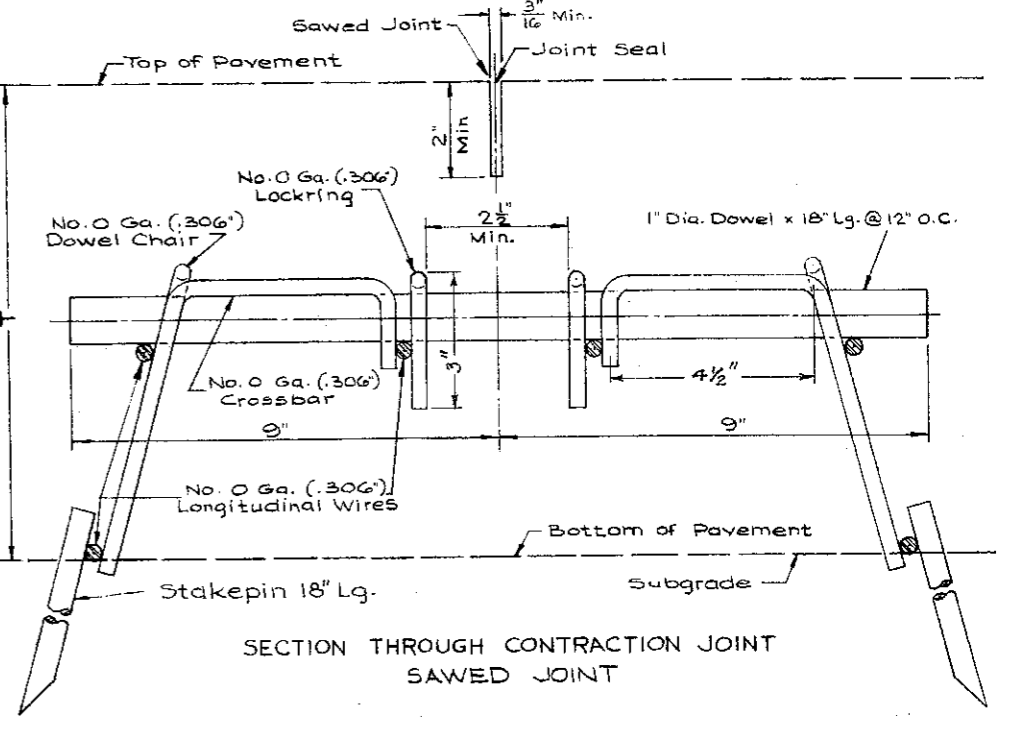
SECTION THROUGH EXPANSION JOINT

IMPRESSED CONTRACTION JOINT

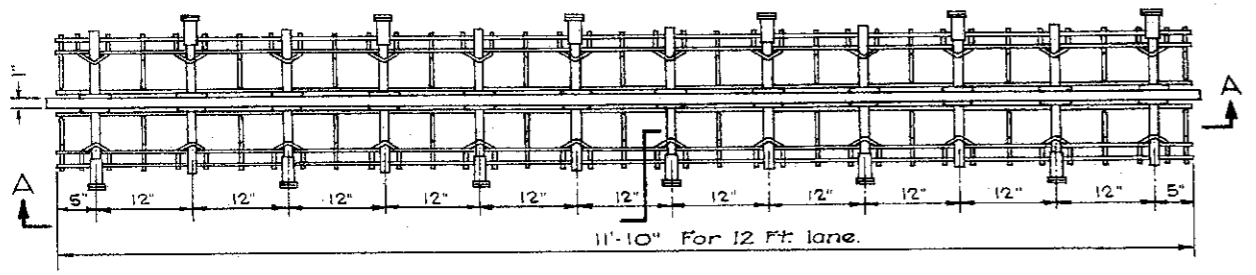


SECTION THROUGH CONTRACTION JOINT WITH PLATE

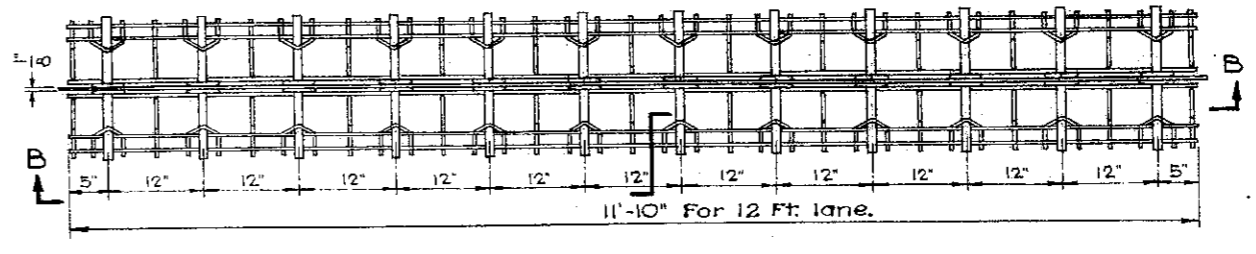
SAWED CONTRACTION JOINT



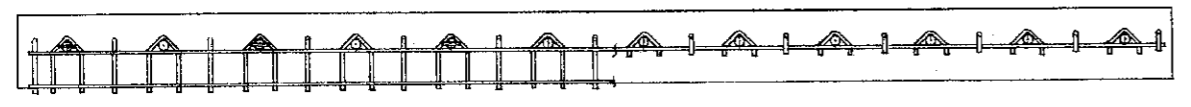
SECTION THROUGH CONTRACTION JOINT SAWED JOINT



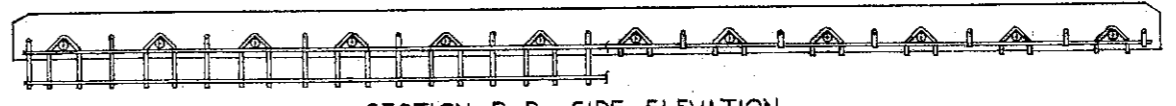
PLAN VIEW - EXPANSION JOINT UNIT



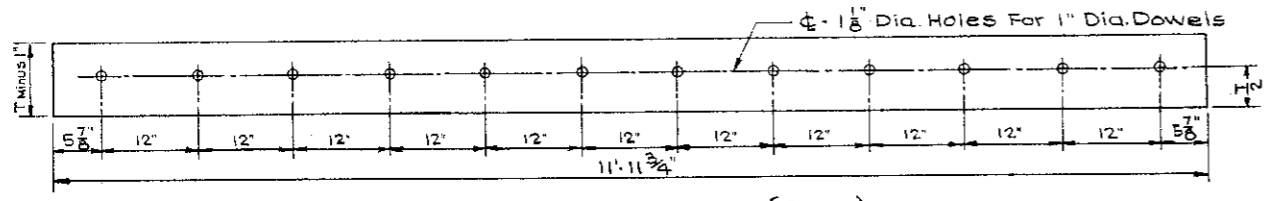
PLAN VIEW CONTRACTION JOINT UNIT



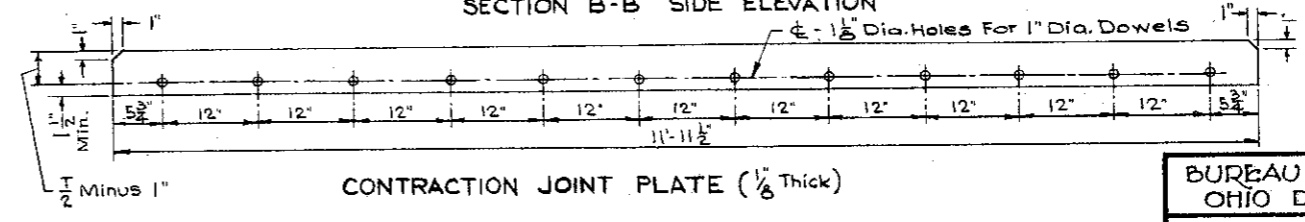
SECTION A-A SIDE ELEVATION



SECTION B-B SIDE ELEVATION



EXPANSION JOINT FILLER (1" Thick)



CONTRACTION JOINT PLATE (1/8" Thick)

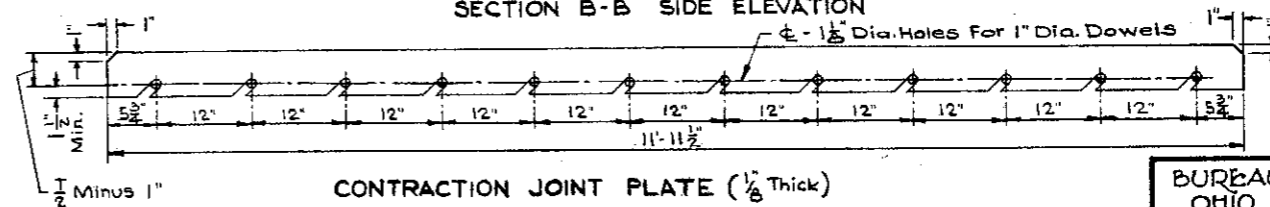
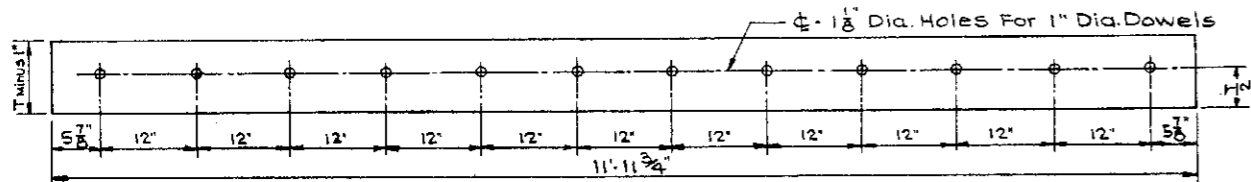
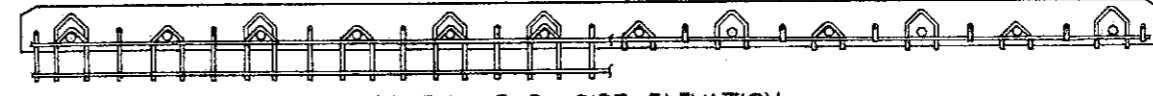
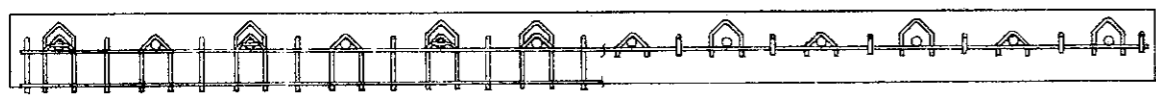
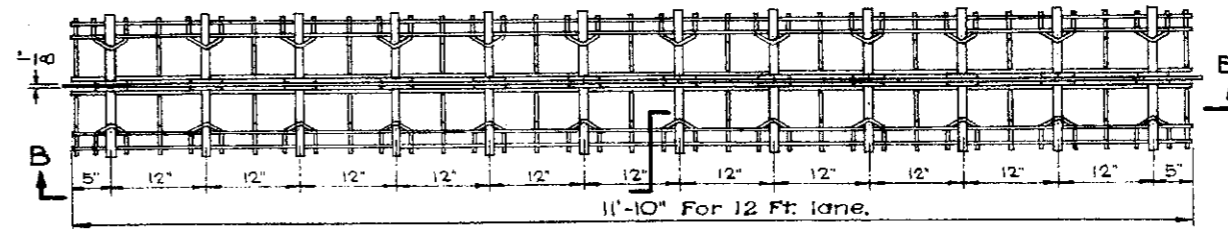
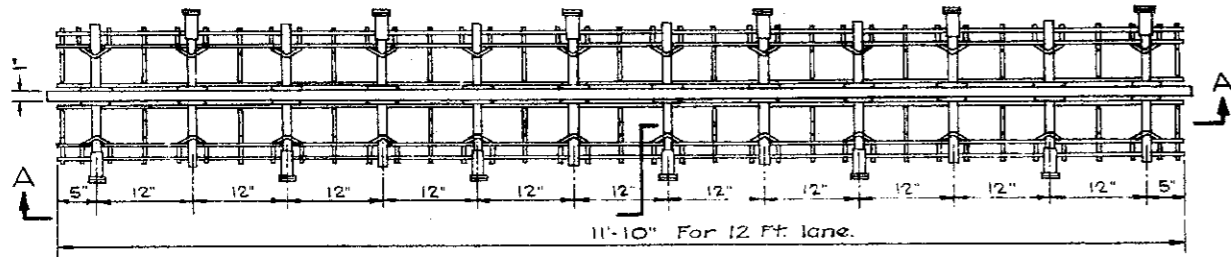
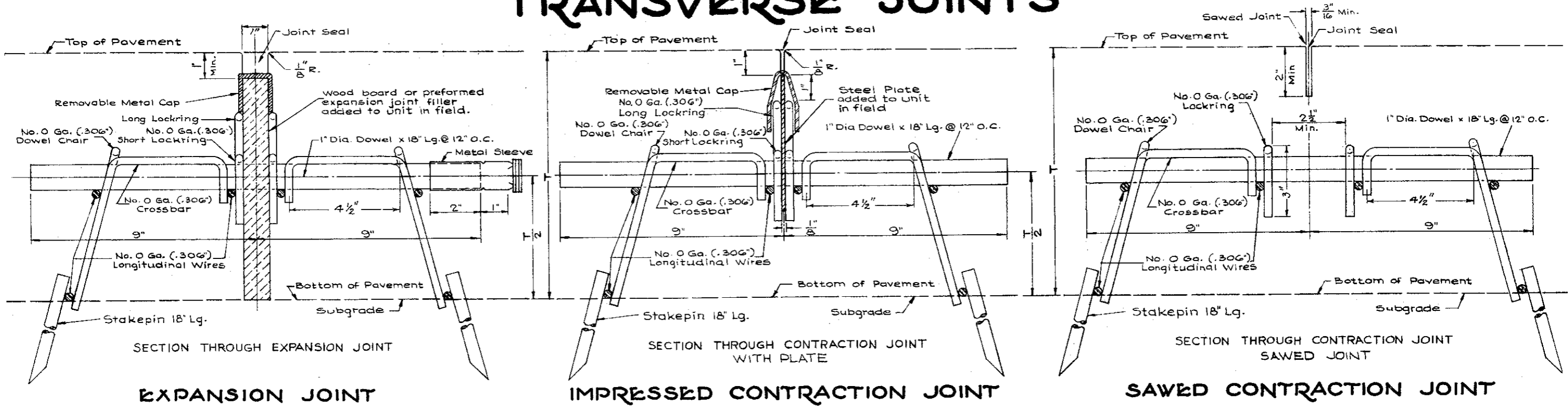
BUREAU OF LOCATION AND DESIGN,
OHIO DEPARTMENT OF HIGHWAYS

**PAVEMENT
JOINT ASSEMBLY
NO. 5**

DATE
10-6-55

APPROVED *[Signature]* DEPUTY DIRECTOR
DESIGN AND CONSTRUCTION

TRANSVERSE JOINTS



NOTE: Crossbars, Dowel Chairs and Lockrings are welded to Longitudinal Wires at all points of contact.

When contraction joints are sawed, the sawed joint assembly may be used at expansion joints provided the expansion joint material is adequately braced during the placing and finishing of the concrete pavement.

BUREAU OF LOCATION AND DESIGN
OHIO DEPARTMENT OF HIGHWAYS

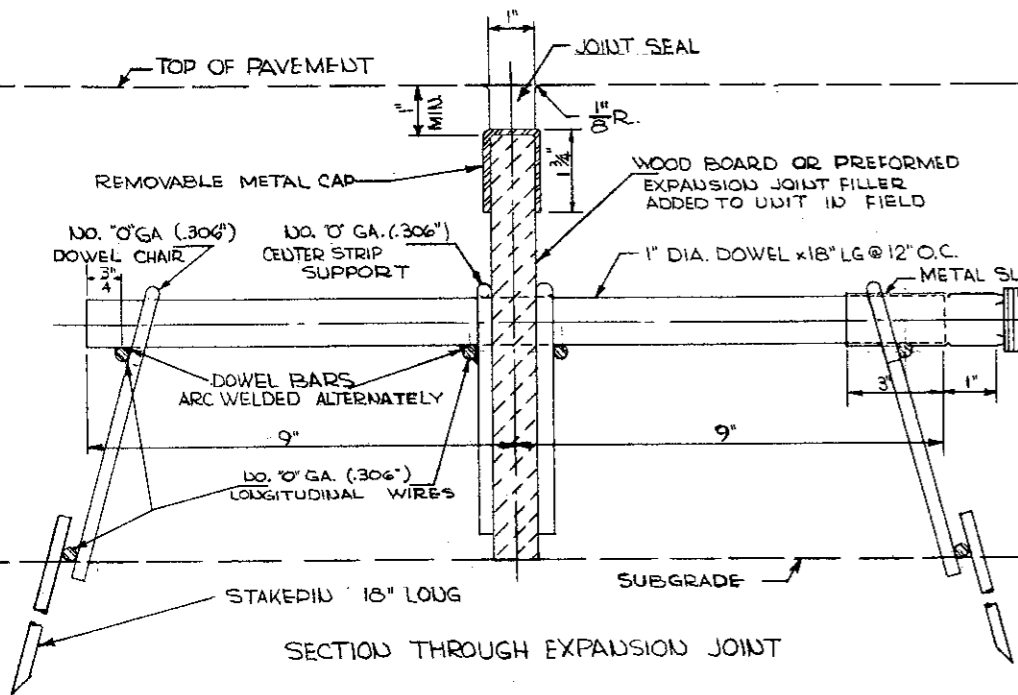
**PAVEMENT
JOINT ASSEMBLY
NO. 5**

DATE
10-6-55
4-9-56

APPROVED

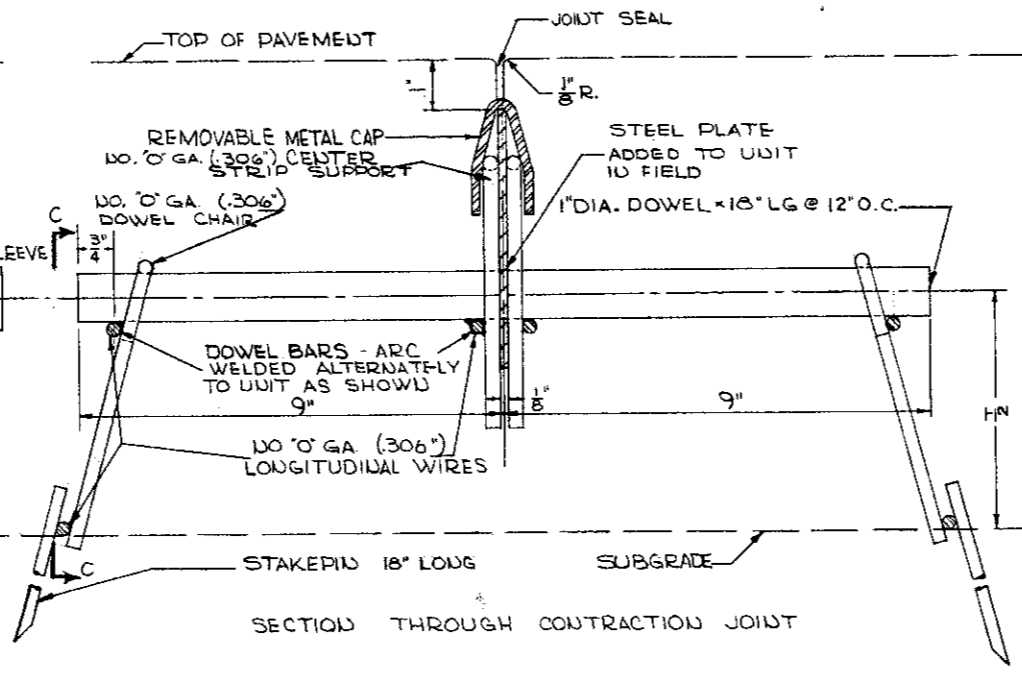
E. J. Patten
ENGINEER, L. & D.
H. F. Bould
DEPUTY DIRECTOR
DESIGN AND CONSTRUCTION

EXPANSION JOINT



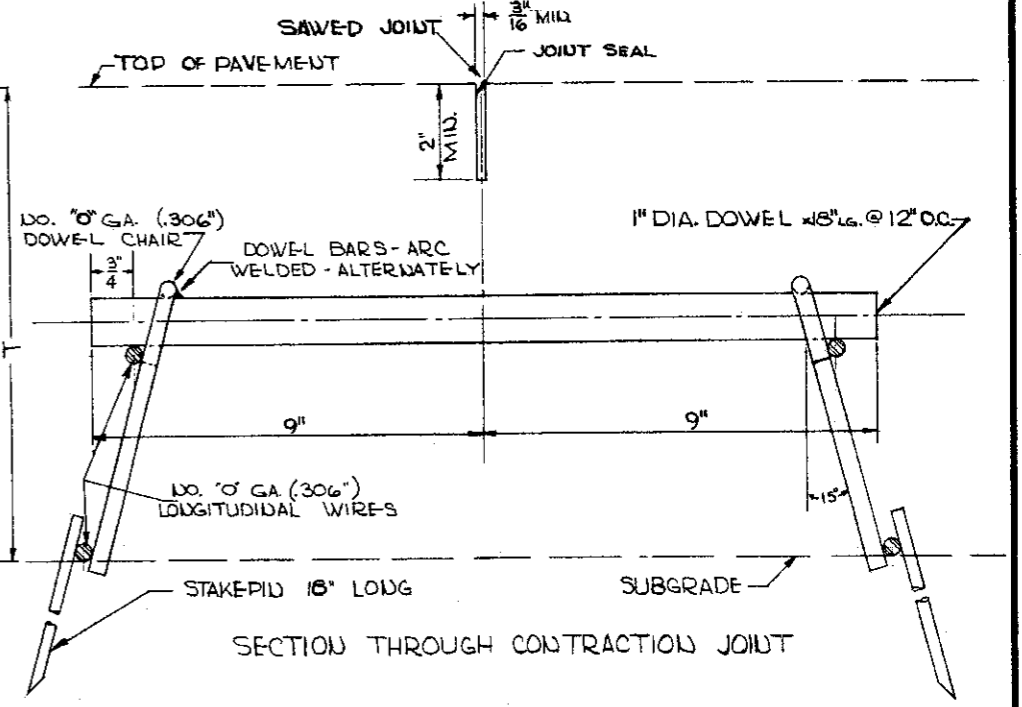
SECTION THROUGH EXPANSION JOINT

METAL CONTRACTION JOINT

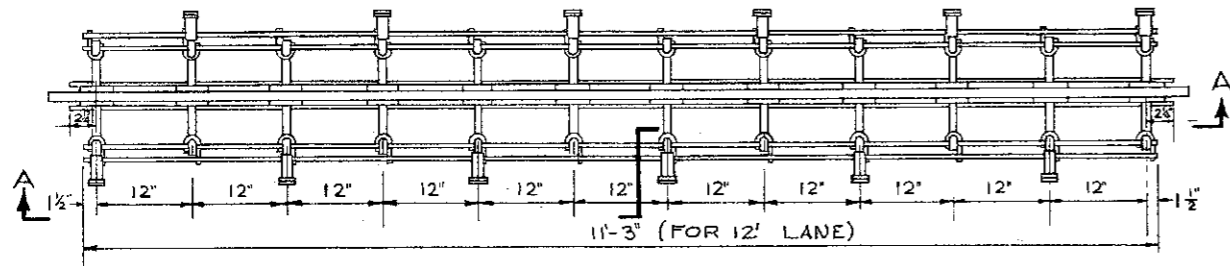


SECTION THROUGH CONTRACTION JOINT

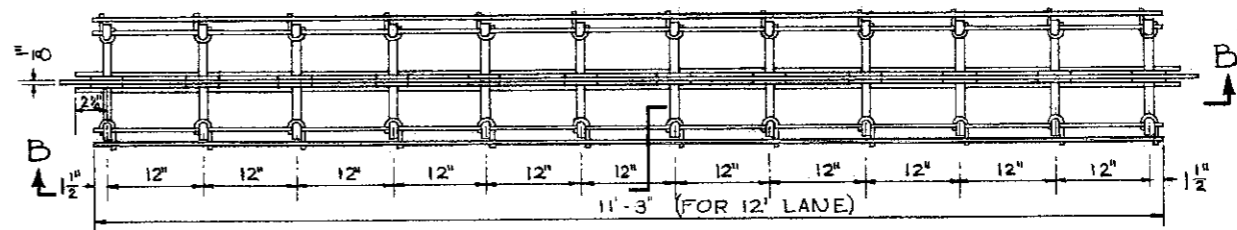
SAWED CONTRACTION JOINT



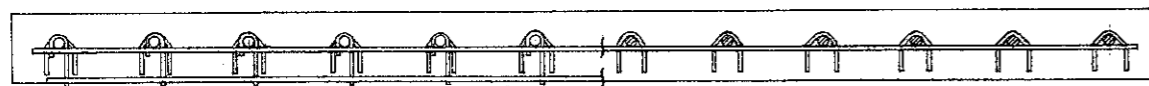
SECTION THROUGH CONTRACTION JOINT



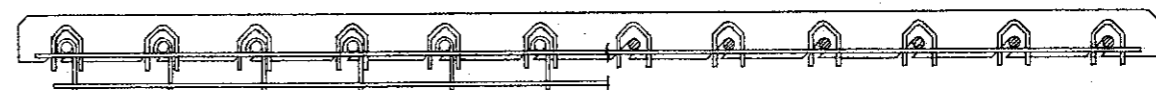
PLAN VIEW - EXPANSION JOINT UNIT



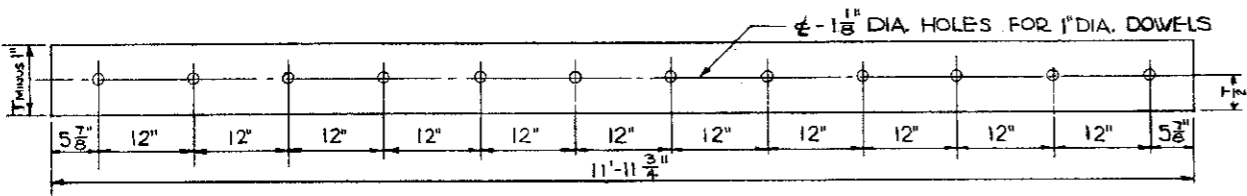
PLAN VIEW CONTRACTION JOINT UNIT (METAL)



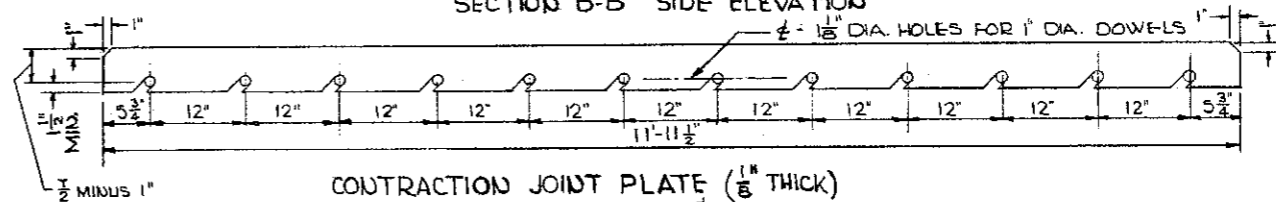
SECTION A-A SIDE ELEVATION



SECTION B-B SIDE ELEVATION

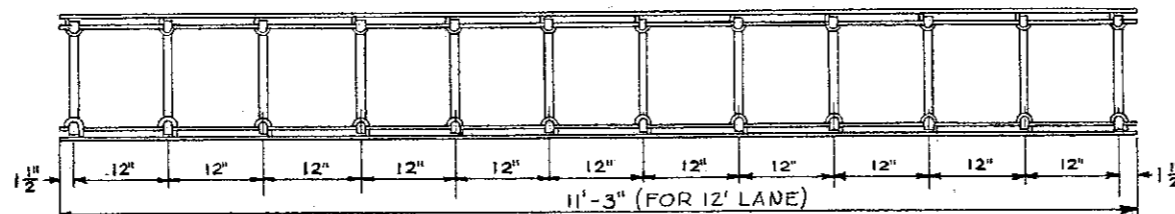


EXPANSION JOINT FILLER (1" THICK)

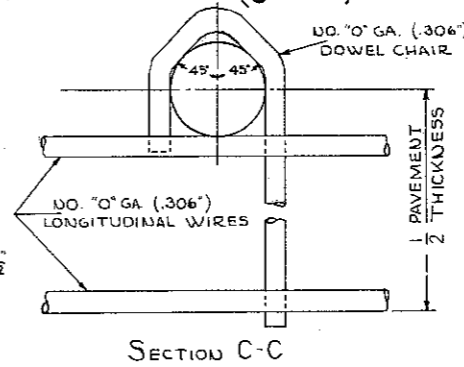


CONTRACTION JOINT PLATE (1/8" THICK)

NOTE - LONGITUDINAL WIRES SHALL BE WELDED TO DOWEL CHAIRS AND CENTER STRIP SUPPORTS TO FORM A RIGID ASSEMBLY.



PLAN VIEW SAWED CONTRACTION UNIT



SECTION C-C

BUREAU OF LOCATION AND DESIGN
OHIO DEPARTMENT OF HIGHWAYS

PAVEMENT
JOINT ASSEMBLY
NO. 5

DATE
10-6-55
4-9-58
4-24-58

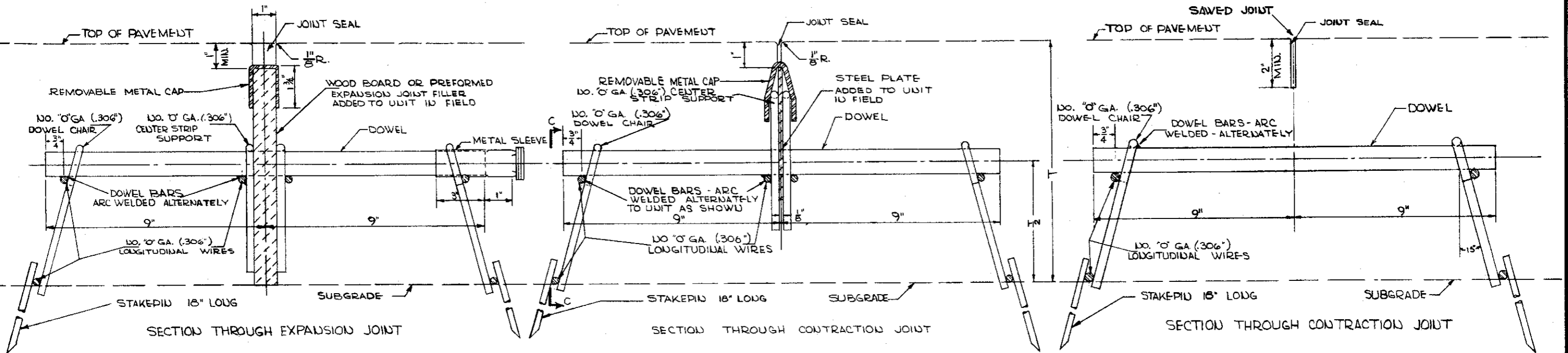
APPROVED

R. S. Smith
ENGINEER OF LOCATION & DESIGN

EXPANSION JOINT

PLATE CONTRACTION JOINT

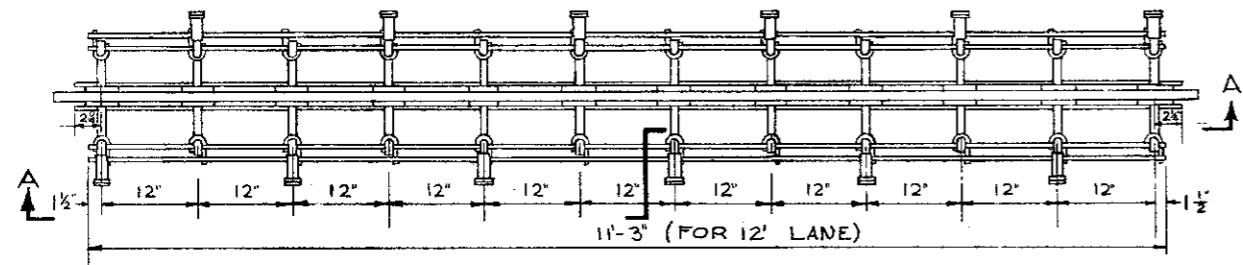
SAWED CONTRACTION JOINT



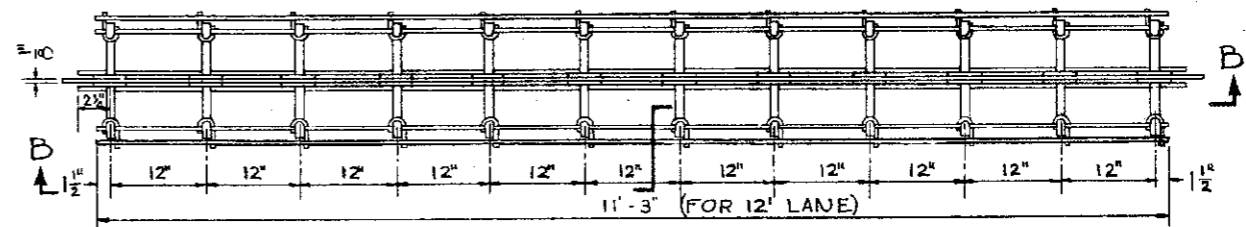
SECTION THROUGH EXPANSION JOINT

SECTION THROUGH CONTRACTION JOINT

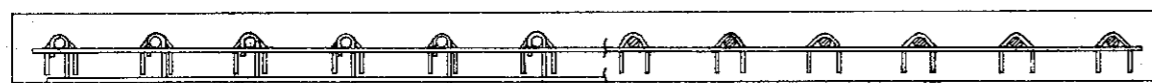
SECTION THROUGH CONTRACTION JOINT



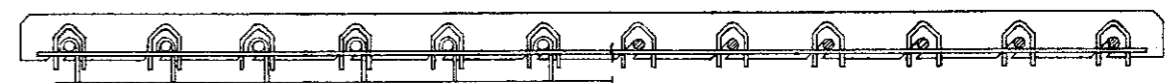
PLAN VIEW - EXPANSION JOINT UNIT



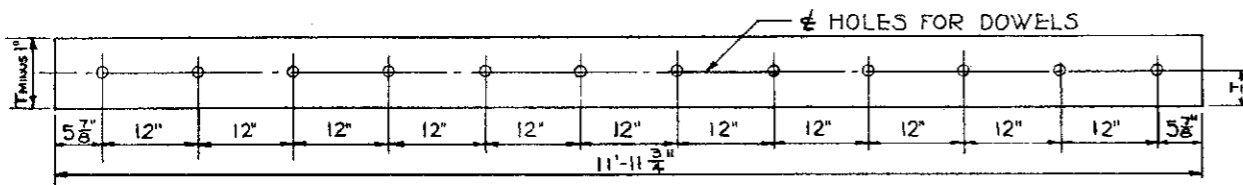
PLAN VIEW CONTRACTION JOINT UNIT (PLATE)



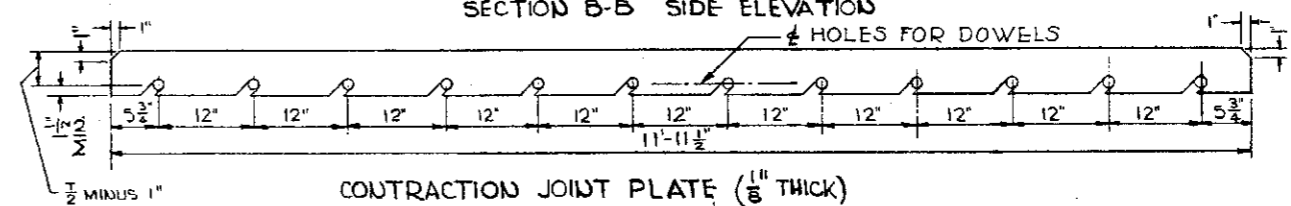
SECTION A-A SIDE ELEVATION



SECTION B-B SIDE ELEVATION

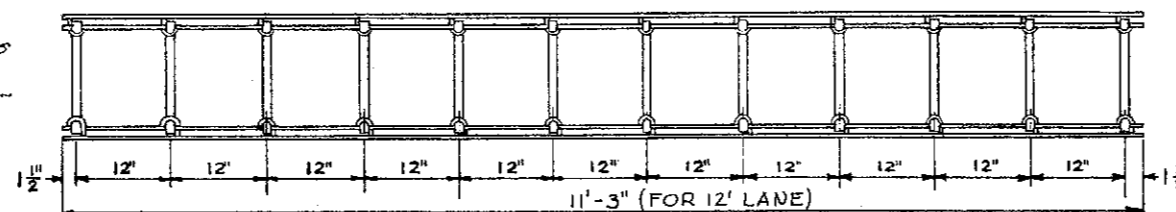


EXPANSION JOINT FILLER (1" THICK)

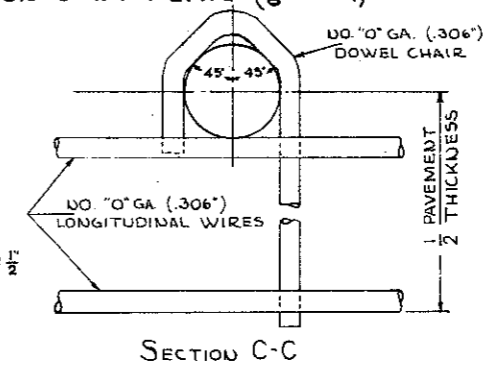


CONTRACTION JOINT PLATE (1/8" THICK)

NOTES
 Longitudinal wires shall be welded to dowel chairs and center strip supports to form a rigid assembly. This assembly shall meet the requirements of Standard Drawing "T.J."
 Expansion joint material shall be adequately staked to maintain it in a vertical position.

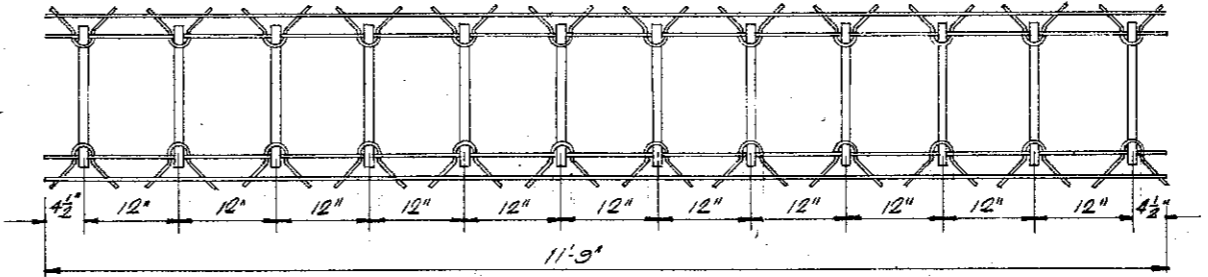
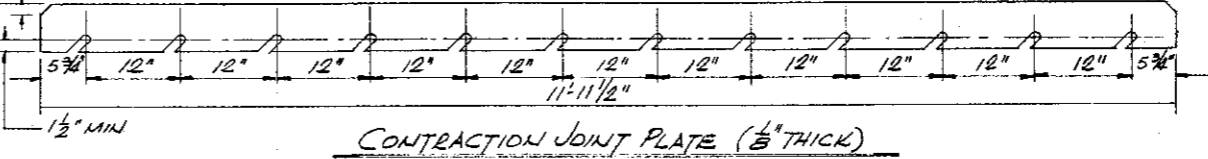
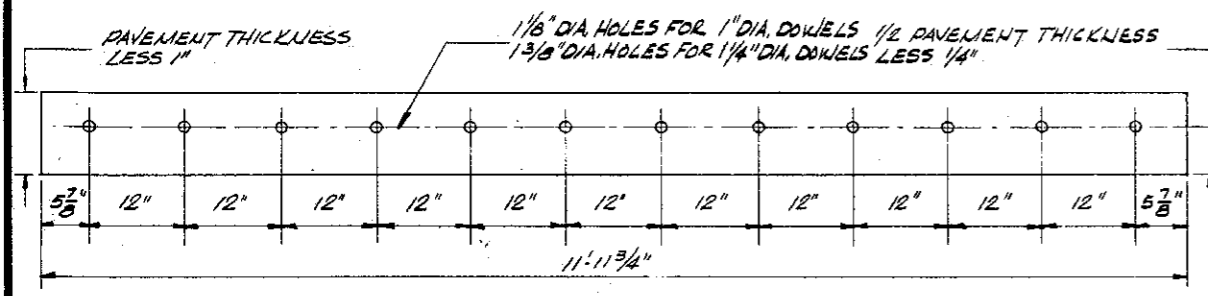
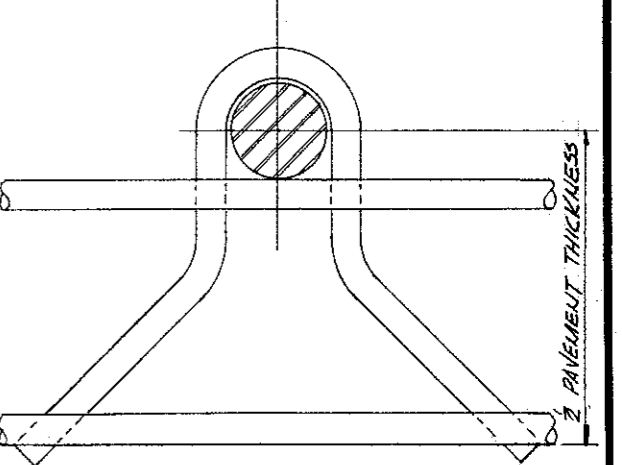
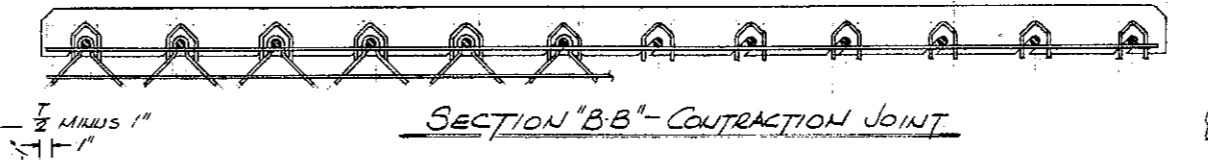
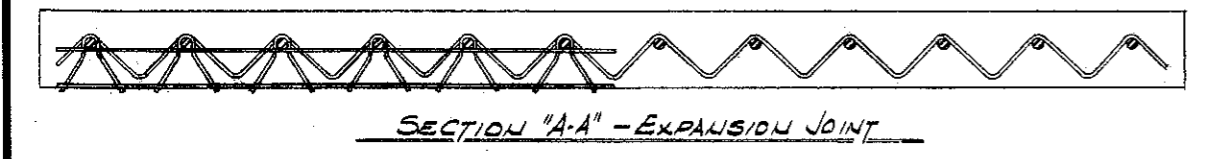
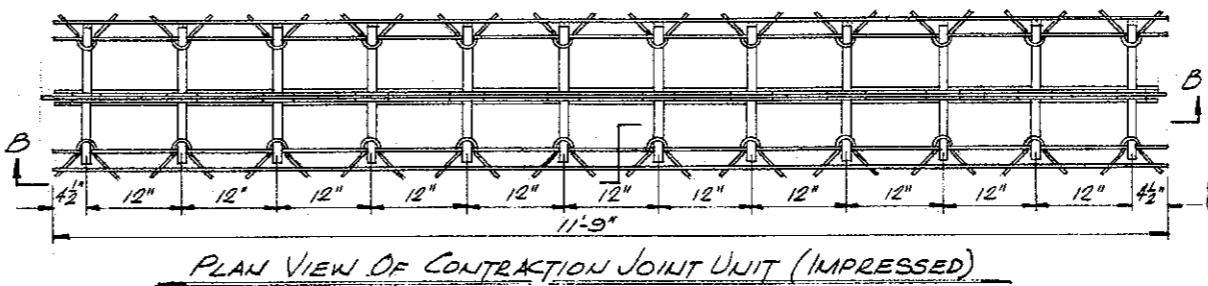
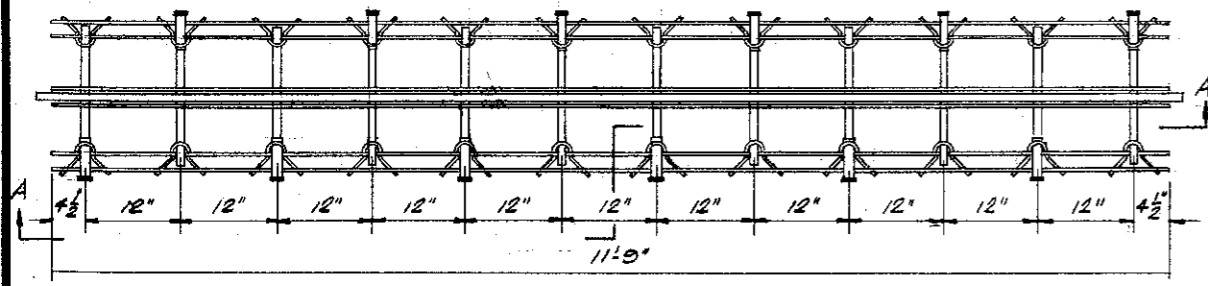
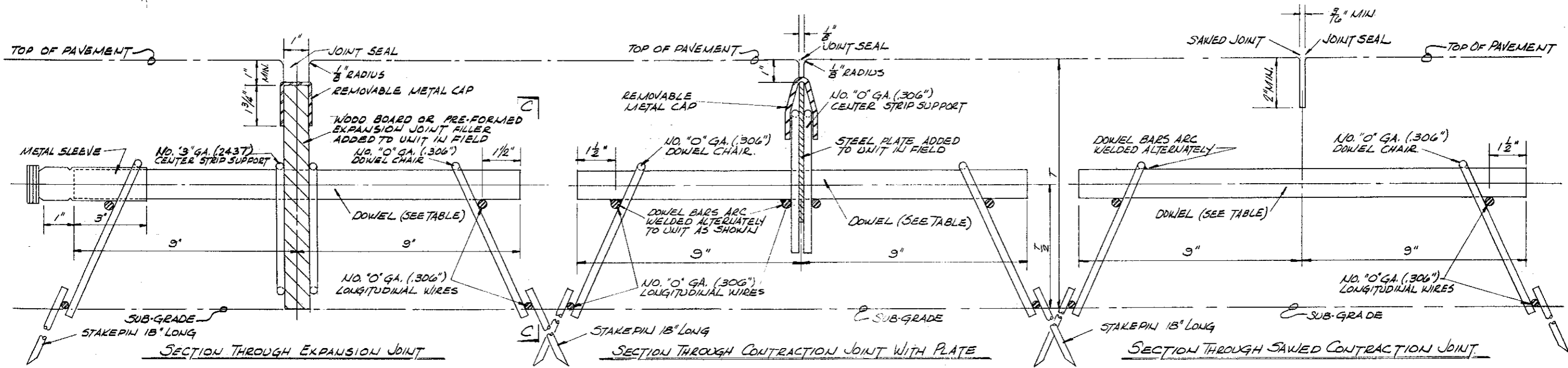


PLAN VIEW SAWED CONTRACTION UNIT



SECTION C-C

BUREAU OF LOCATION AND DESIGN OHIO DEPARTMENT OF HIGHWAYS	
PAVEMENT JOINT ASSEMBLY NO. 5	
APPROVED	
<i>William</i> ENGINEER OF LOCATION & DESIGN	
DATE	10-6-55 4-9-56 4-24-58 9-12-60



PAVEMENT THICKNESS	DOWEL SIZE
8" OR LESS	1" DIA. x 18" LONG
9"	1 1/8" DIA. x 18" LONG
10"	1 1/2" DIA. x 18" LONG
OVER 10"	AS SHOWN ON PLANS

BUREAU OF LOCATION AND DESIGN
OHIO DEPARTMENT OF HIGHWAYS

PAVEMENT JOINT ASSEMBLY No. 5

APPROVED

R. M. Pinkette
ENGINEER OF LOCATION & DESIGN

DATE
10-6-55
4-9-56
4-24-58
9-12-60
5-15-64