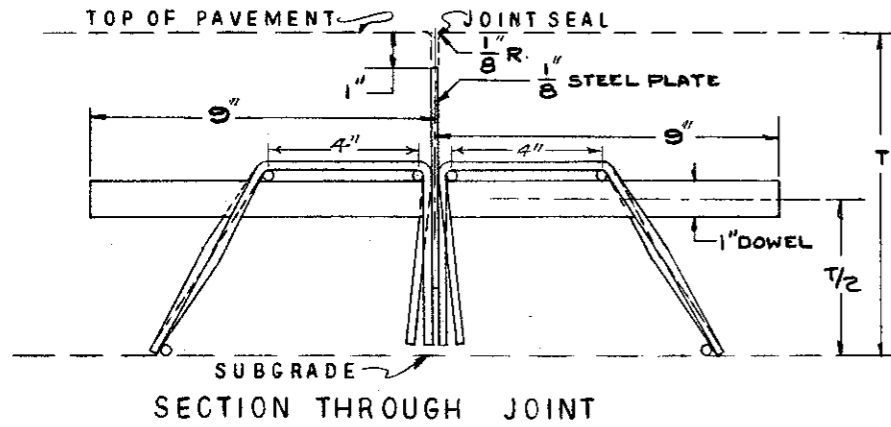
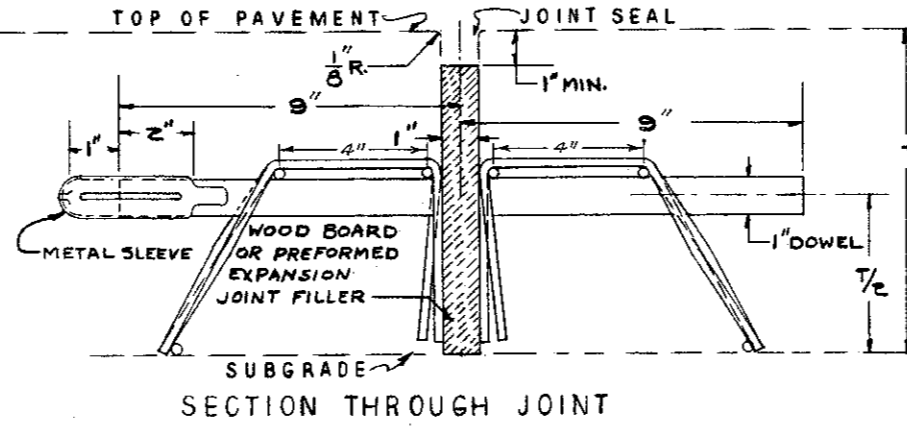


TRANSVERSE JOINTS

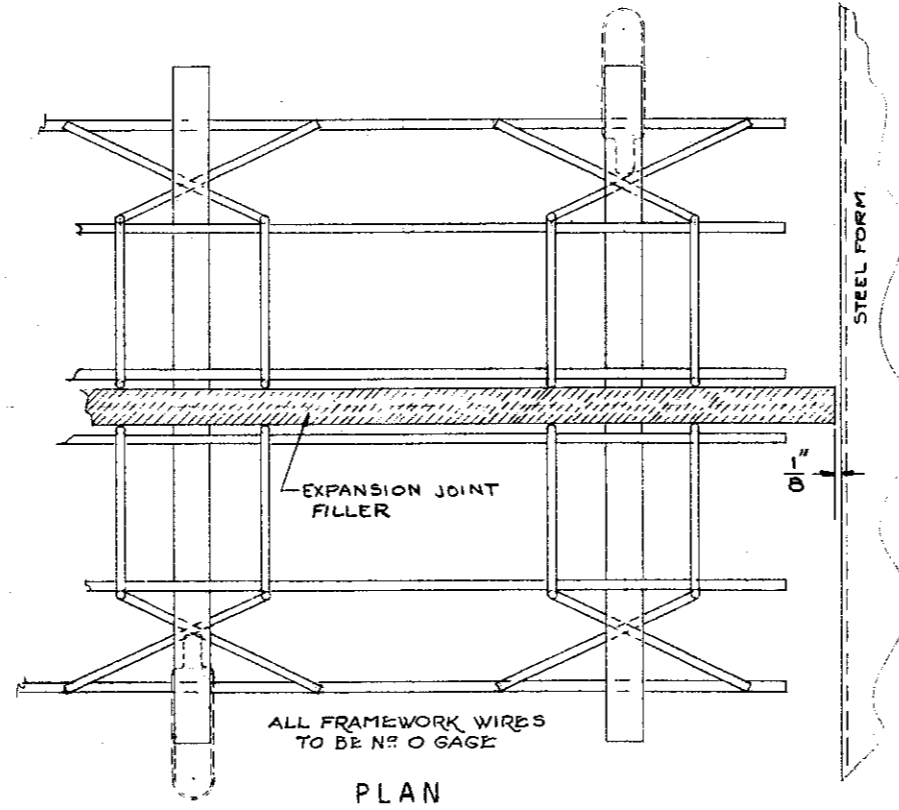
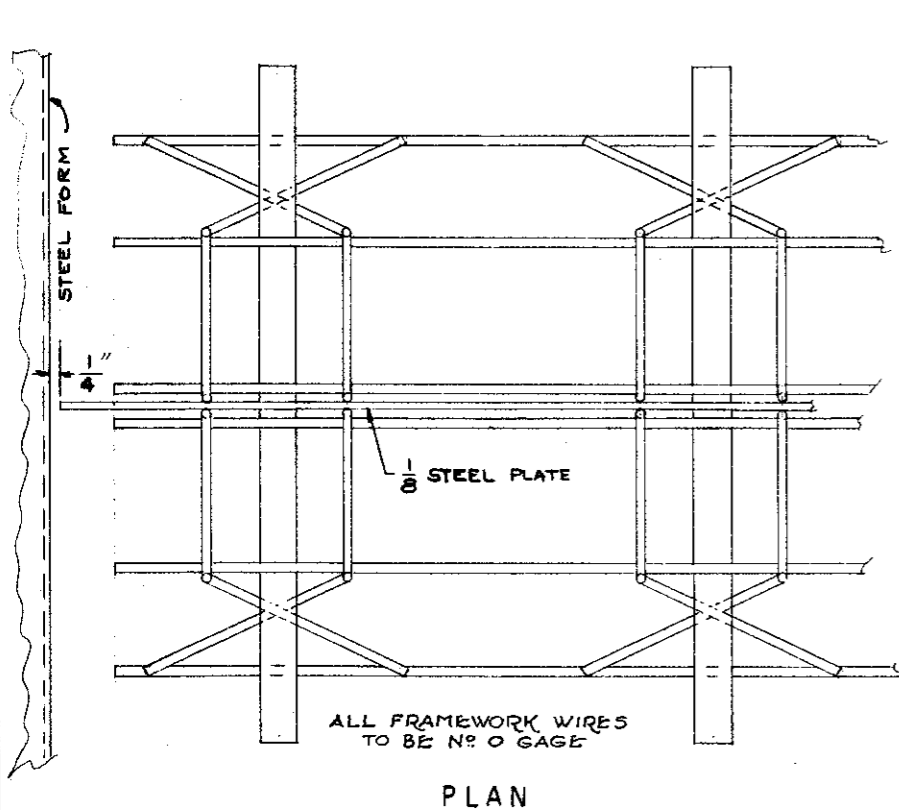
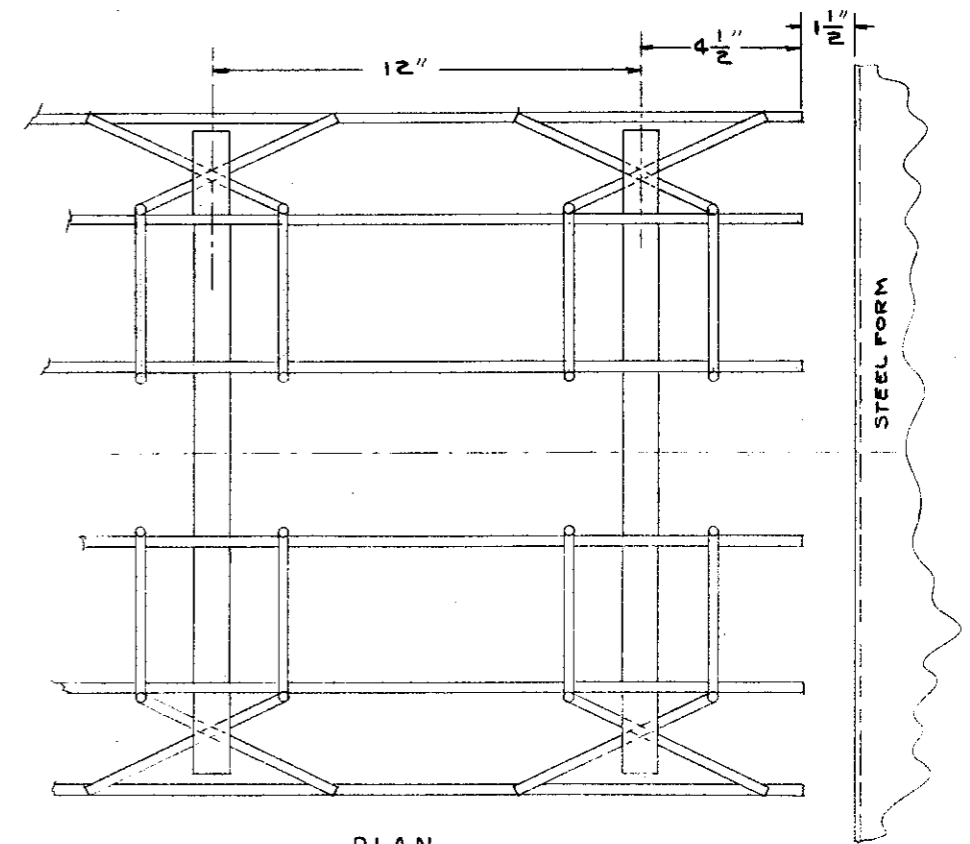
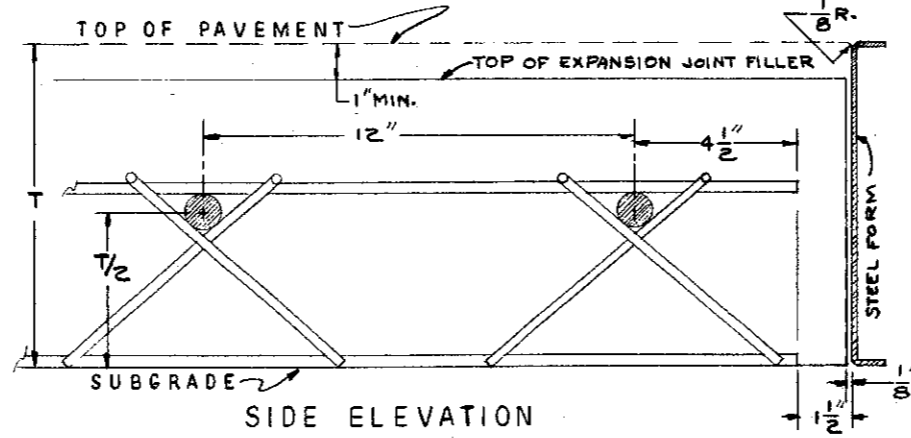
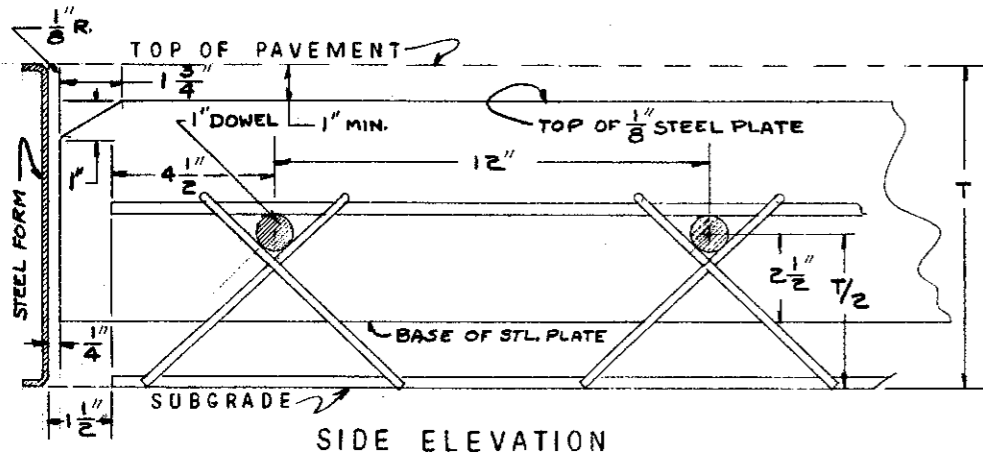
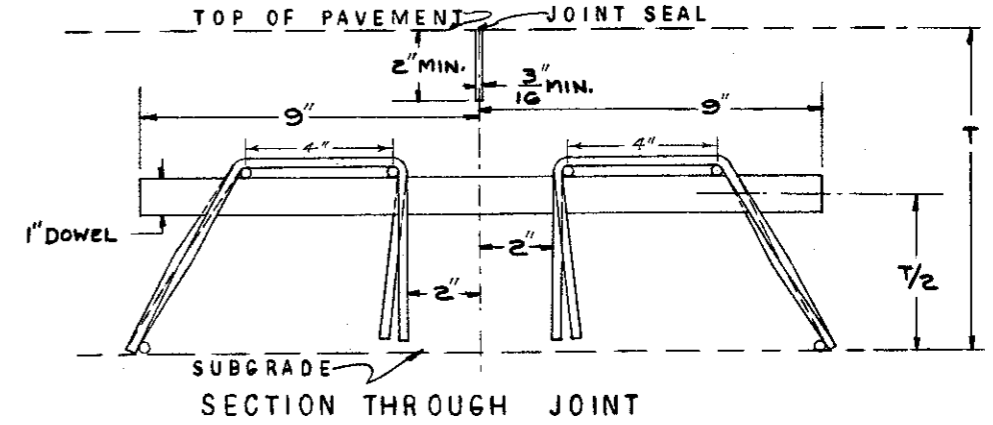
IMPRESSED CONTRACTION JOINT



EXPANSION JOINT



SAWED CONTRACTION JOINT



PLAN
ALL FRAMEWORK WIRES
TO BE NO. 0 GAGE

BUREAU OF LOCATION AND DESIGN
OHIO DEPARTMENT OF HIGHWAYS

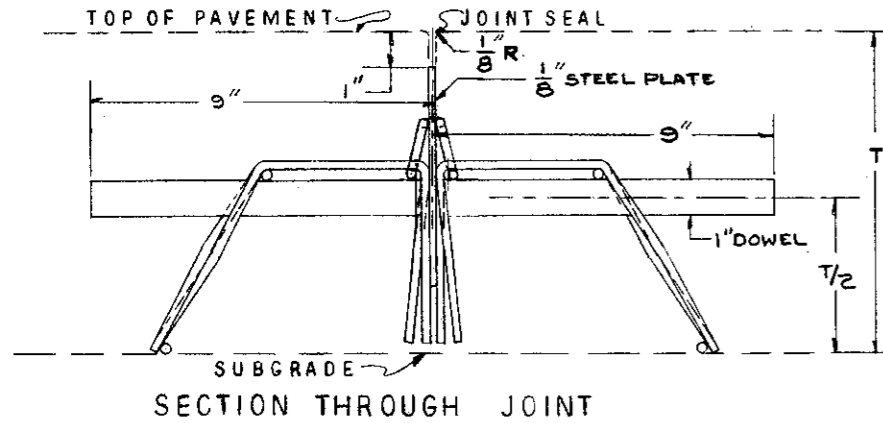
**PAVEMENT
JOINT ASSEMBLY
No. 6**

DATE
10-6-55

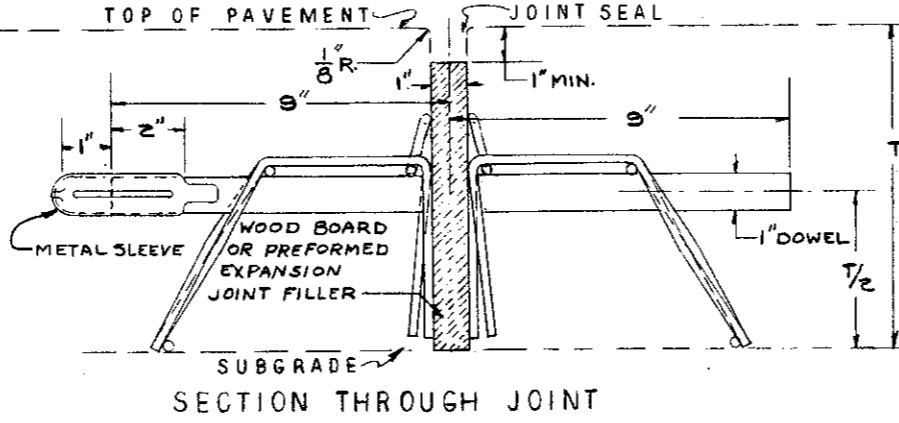
APPROVED *W. F. G...* DEPUTY DIRECTOR,
DESIGN AND CONSTRUCTION

TRANSVERSE JOINTS

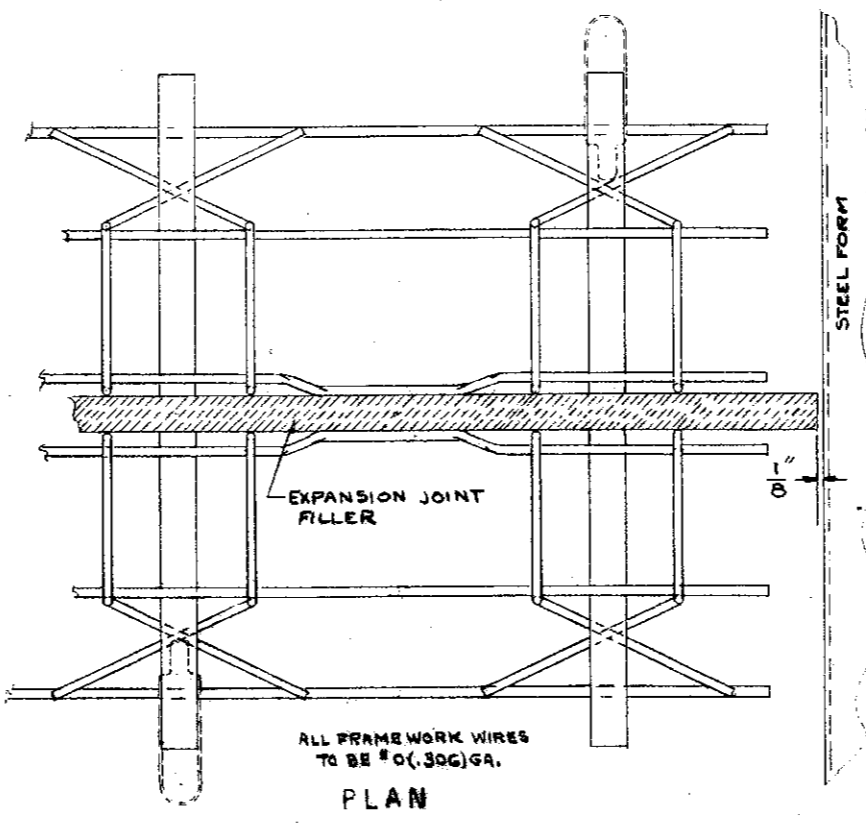
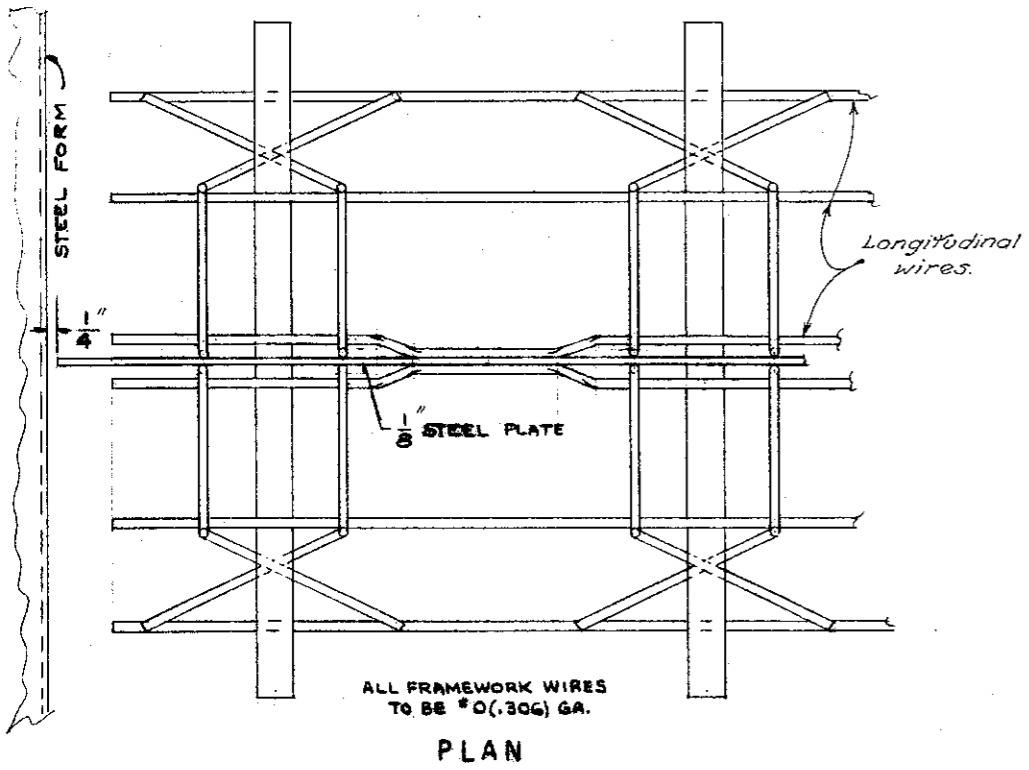
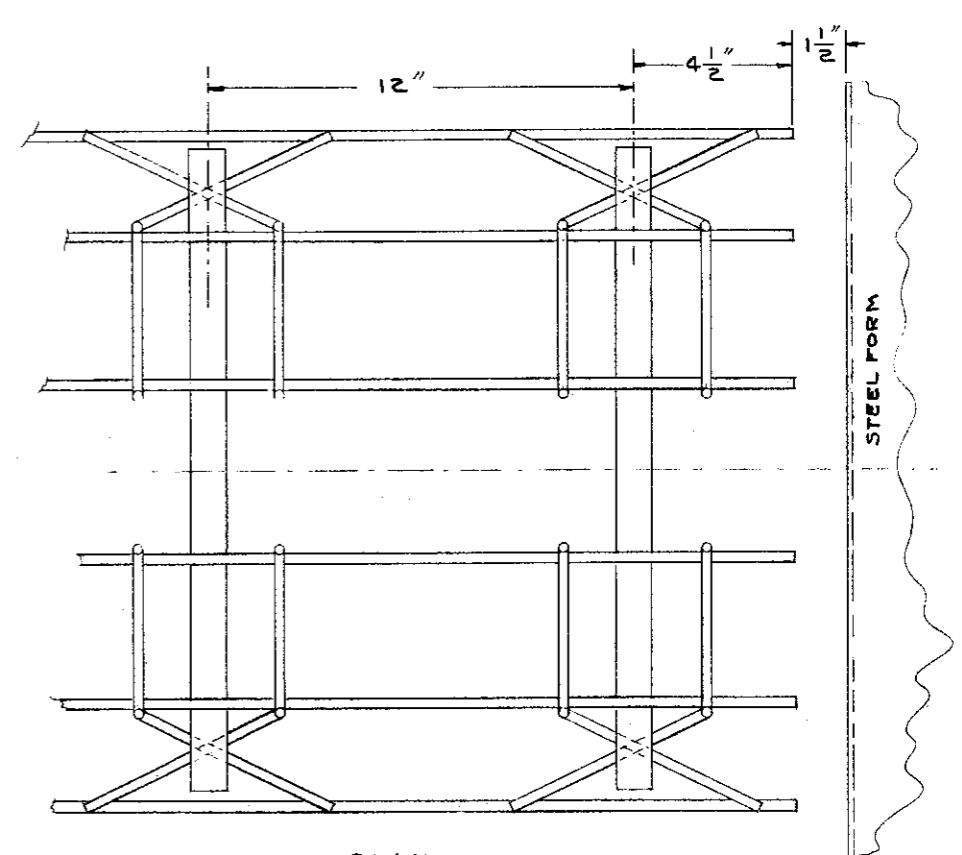
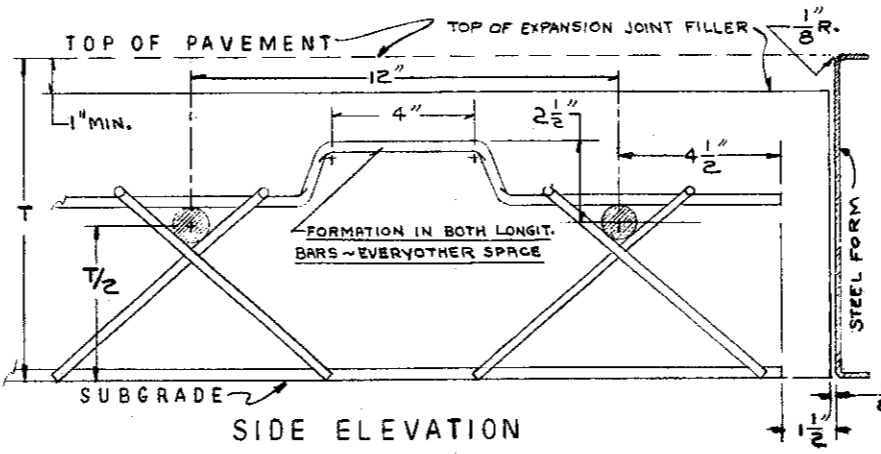
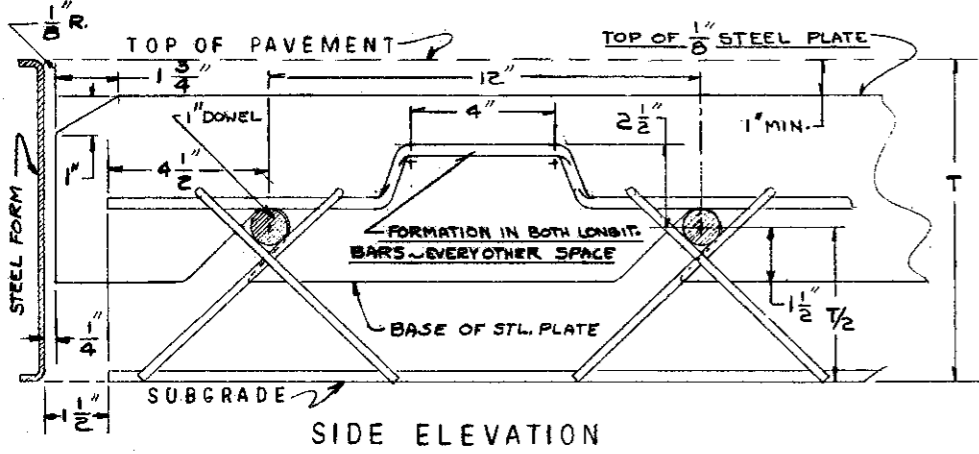
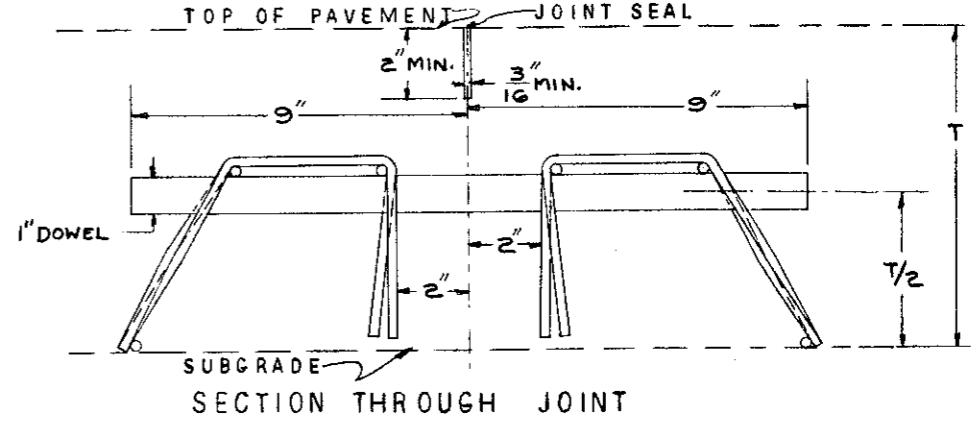
IMPRESSED CONTRACTION JOINT



EXPANSION JOINT



SAWED CONTRACTION JOINT



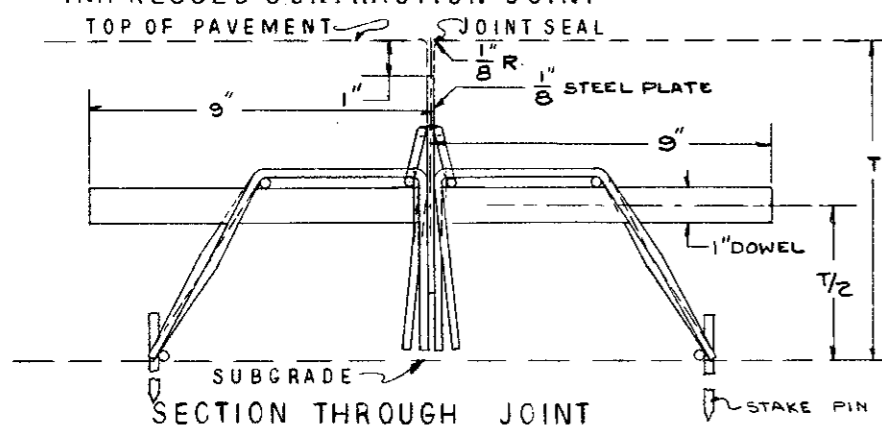
PLAN
ALL FRAMEWORK WIRES TO BE #0(.306) GA.

Notes: 1" dowels shall fit tightly into framework. Longitudinal wires to be welded to remainder of framework at all points of contact. Assembly for holding steel plate may be substituted for sawed joint assembly if 4" clearance is provided as shown.

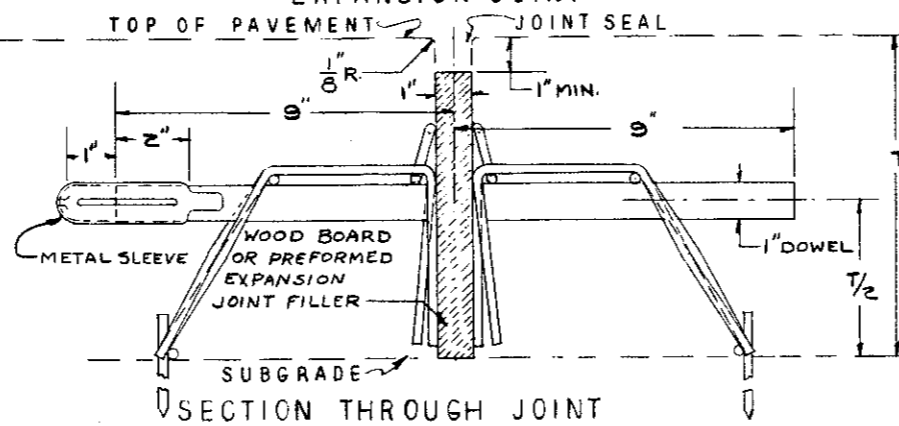
BUREAU OF LOCATION AND DESIGN OHIO DEPARTMENT OF HIGHWAYS	
PAVEMENT JOINT ASSEMBLY No. 6	
DATE 10-6-55 3-9-56	
APPROVED	
<i>E. J. [Signature]</i> ENGINEER L. & D.	<i>I. J. [Signature]</i> DEPUTY DIRECTOR DESIGN AND CONSTRUCTION

TRANSVERSE JOINTS

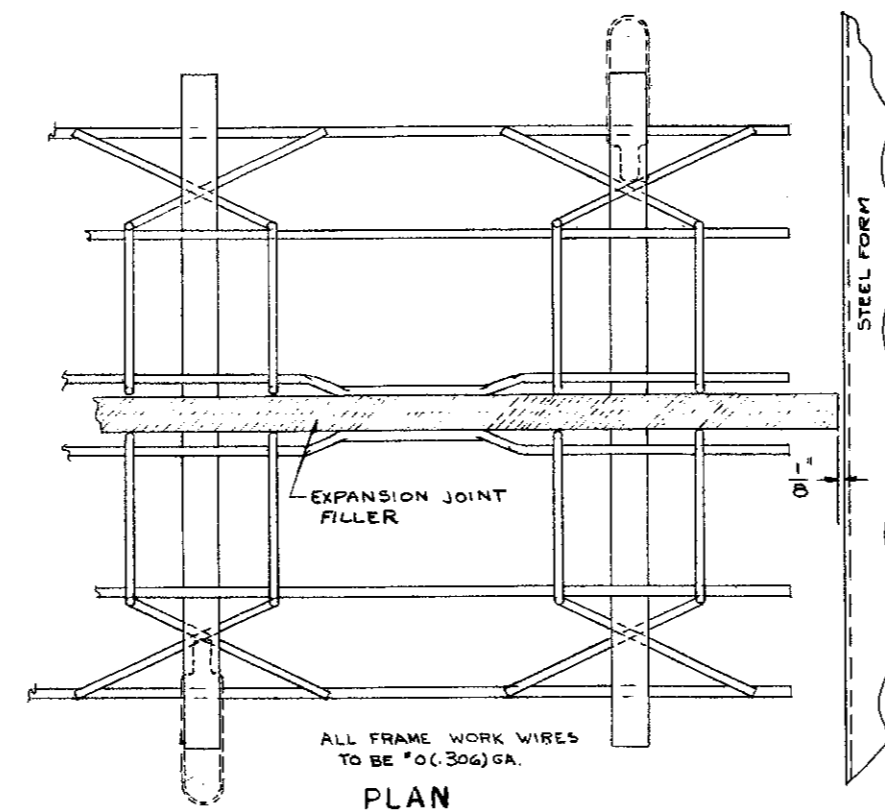
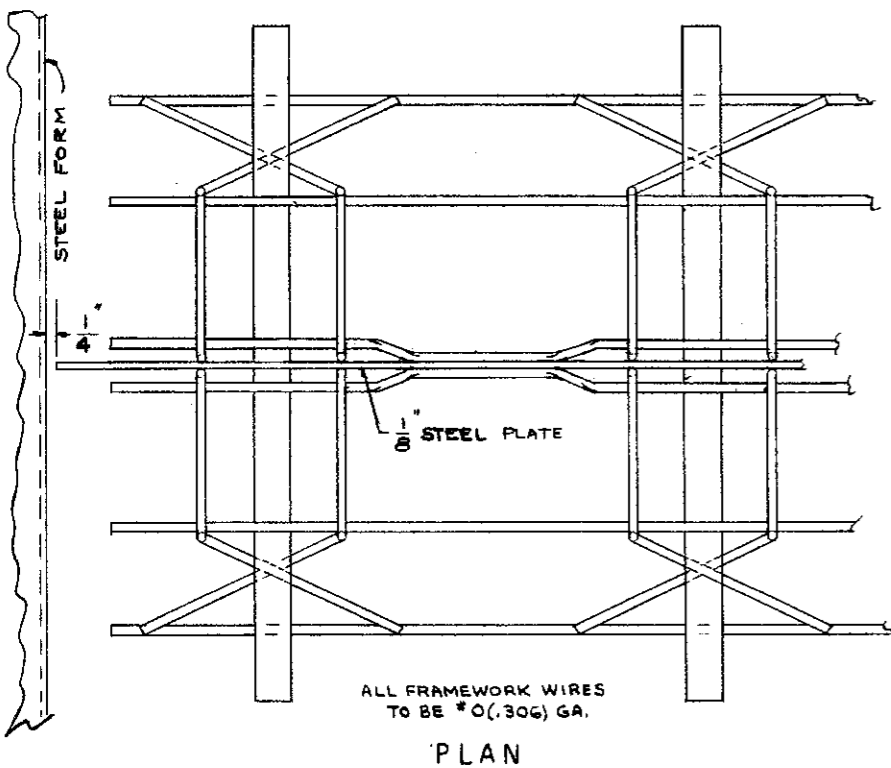
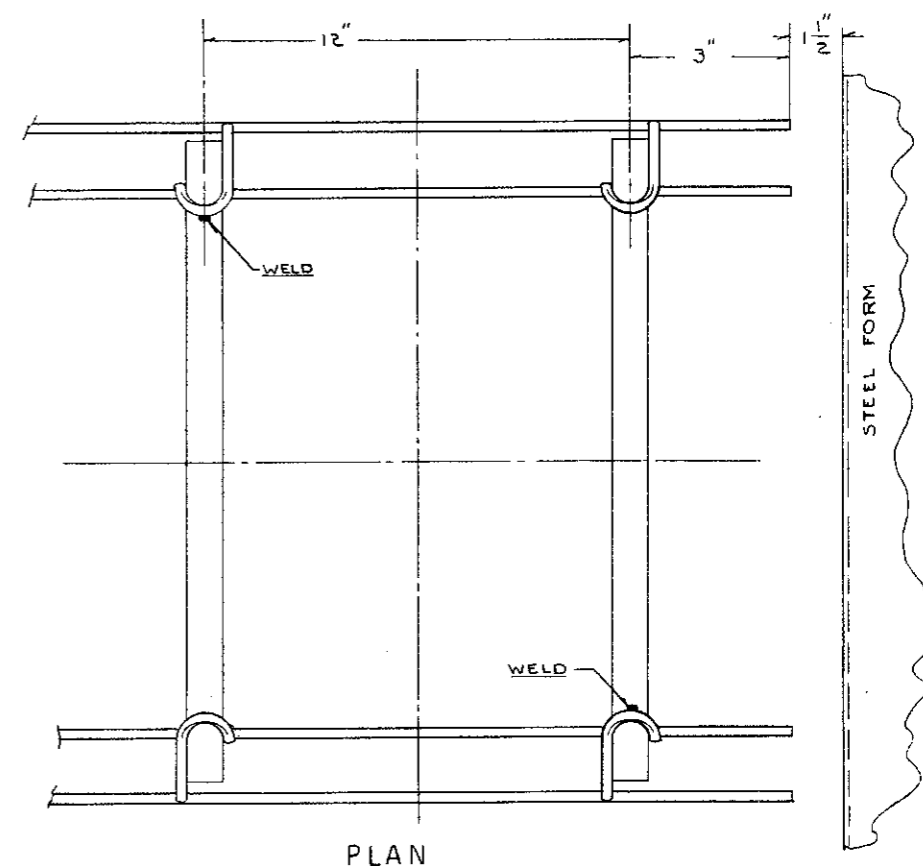
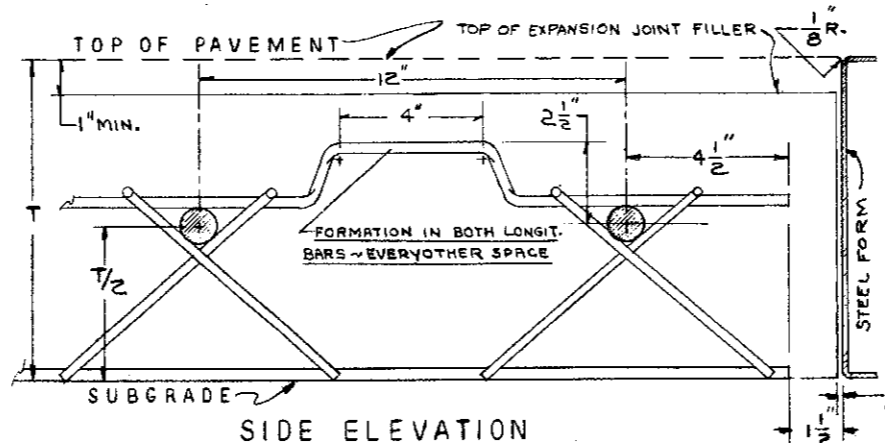
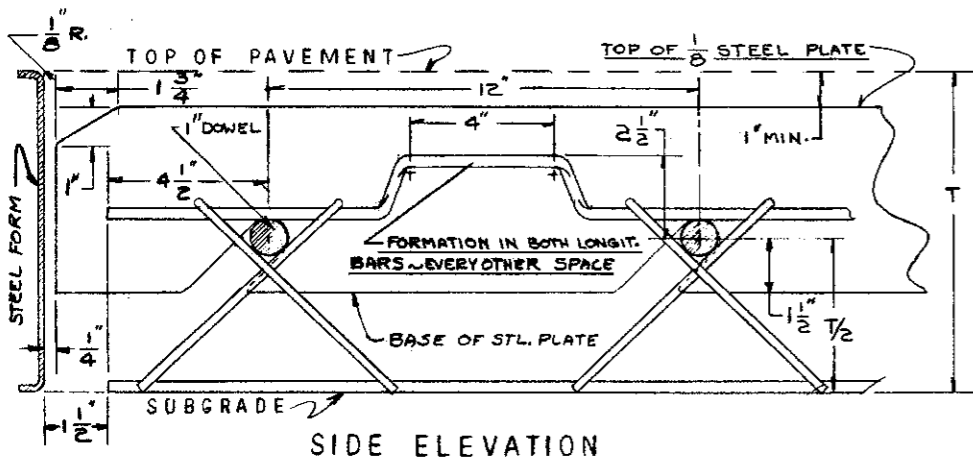
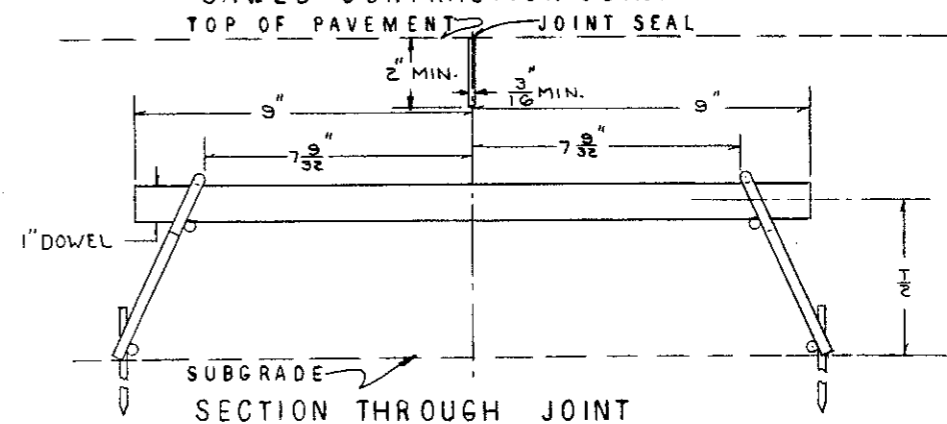
IMPRESSED CONTRACTION JOINT



EXPANSION JOINT



SAWED CONTRACTION JOINT



PLAN
ALL FRAMEWORK WIRES
TO BE #0(.306) GA.

NOTE:
1" DOWELS SHALL FIT TIGHTLY
INTO FRAMEWORK.
LONGITUDINAL WIRES TO BE WELDED
TO REMAINDER OF FRAMEWORK
AT ALL POINTS OF CONTACT.

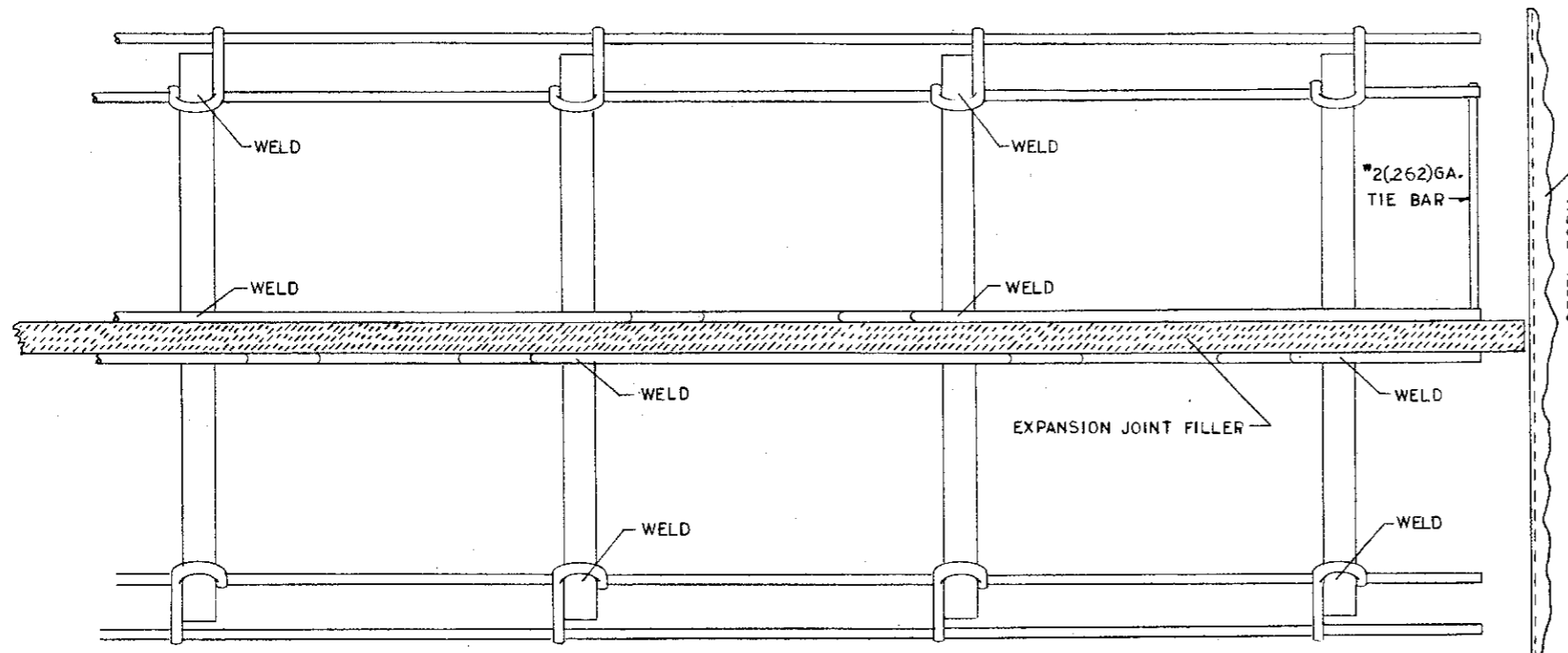
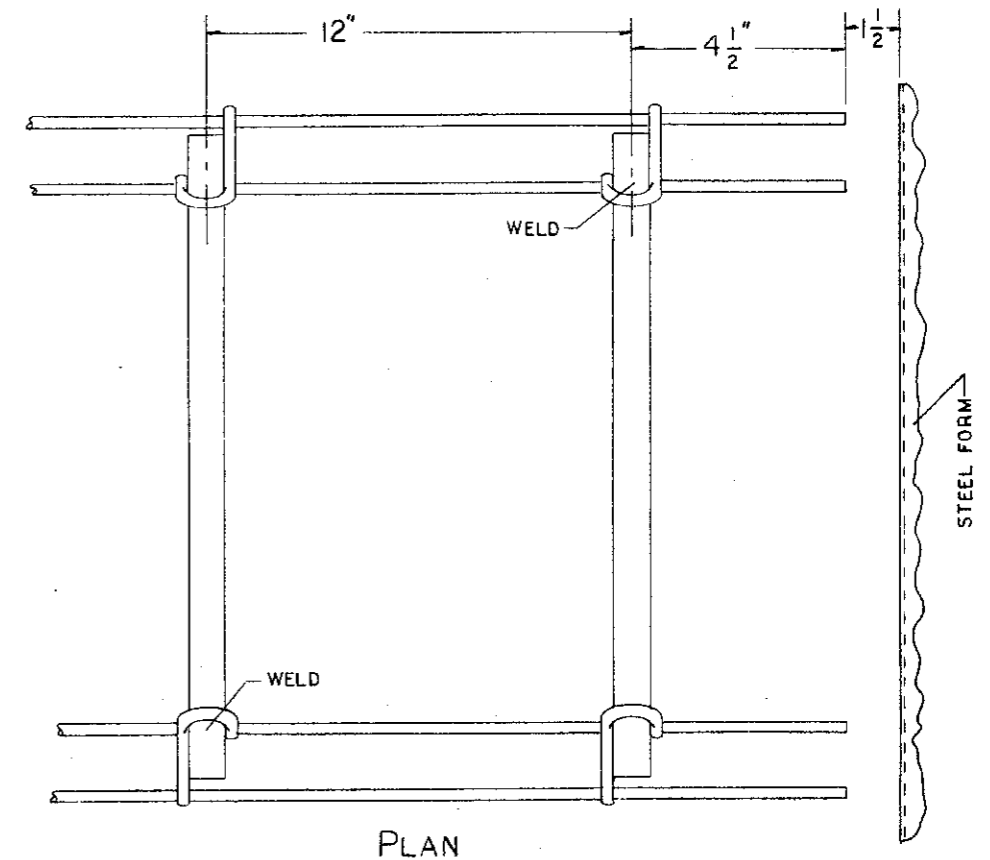
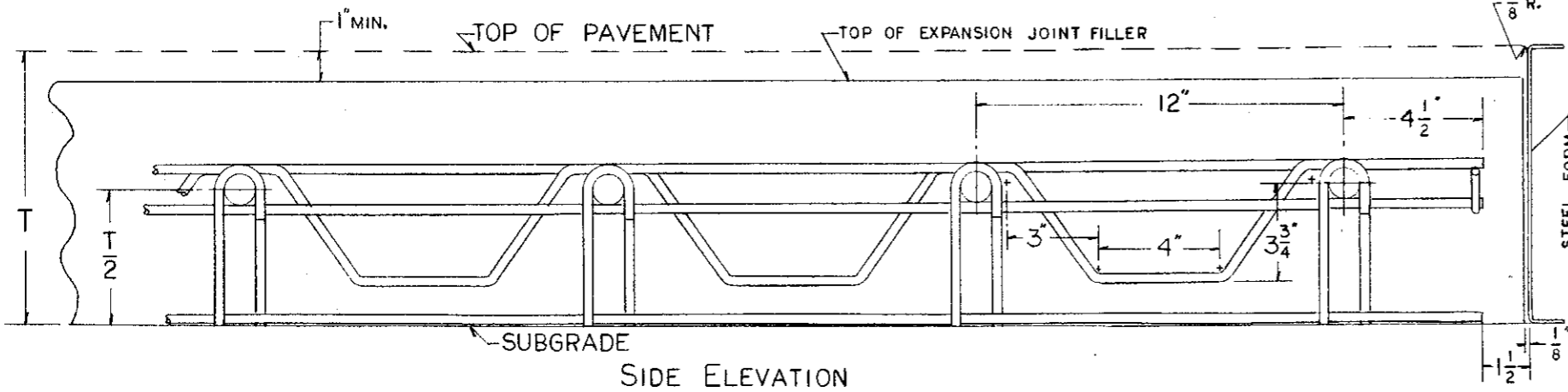
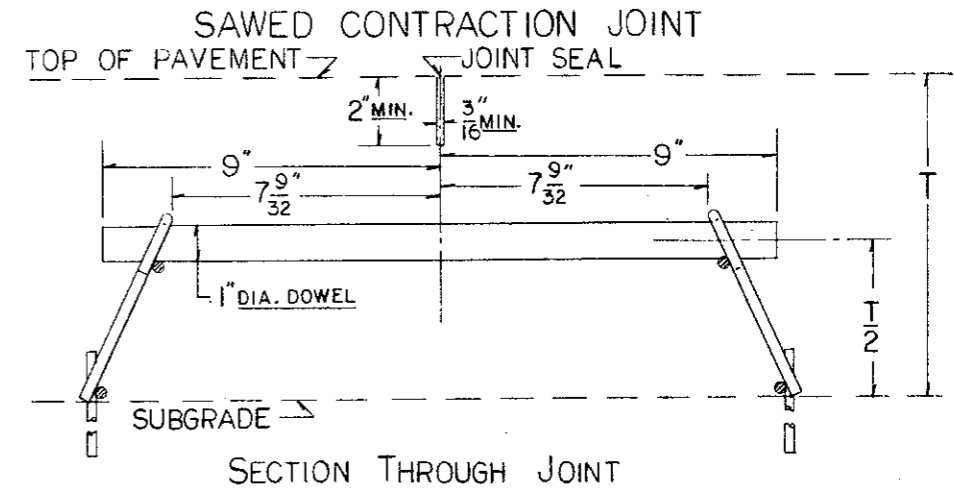
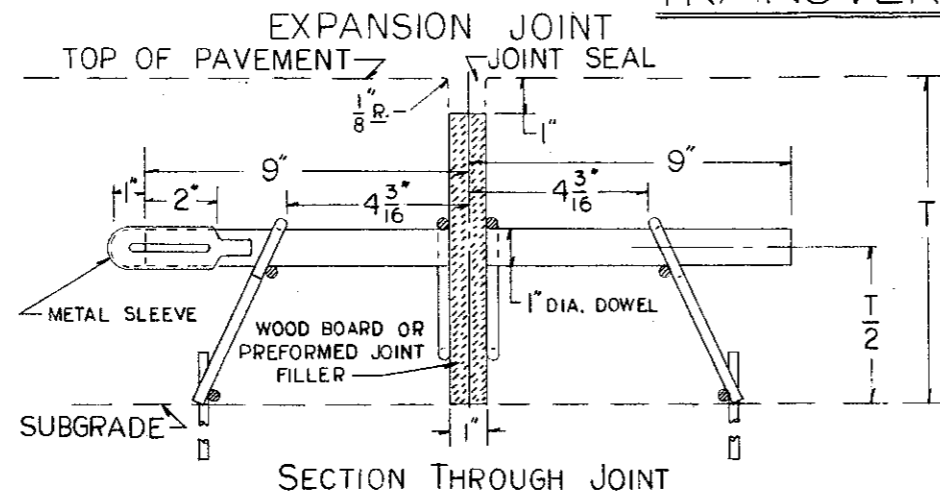
BUREAU OF LOCATION AND DESIGN
OHIO DEPARTMENT OF HIGHWAYS

PAVEMENT
JOINT ASSEMBLY
NO. 6

DATE:
10-6-55
3-9-56
12-10-56

APPROVED
E. J. [Signature] H. F. [Signature]
ENGINEER L. & D. DEPUTY DIRECTOR
DESIGN AND CONSTRUCTION

TRANSVERSE JOINTS



PLAN
ALL FRAMEWORK BARS TO BE #0(.306)

PLAN
ALL FRAMEWORK BARS
TO BE #0(.306)

NOTE -
DOWELS SHALL FIT TIGHTLY
INTO FRAMEWORK AND WELDED
AT POINTS SHOWN.
FRAMEWORK BARS TO BE WELDED
AT POINTS OF CONTACT TO
PROVIDE A RIGID FRAMEWORK.

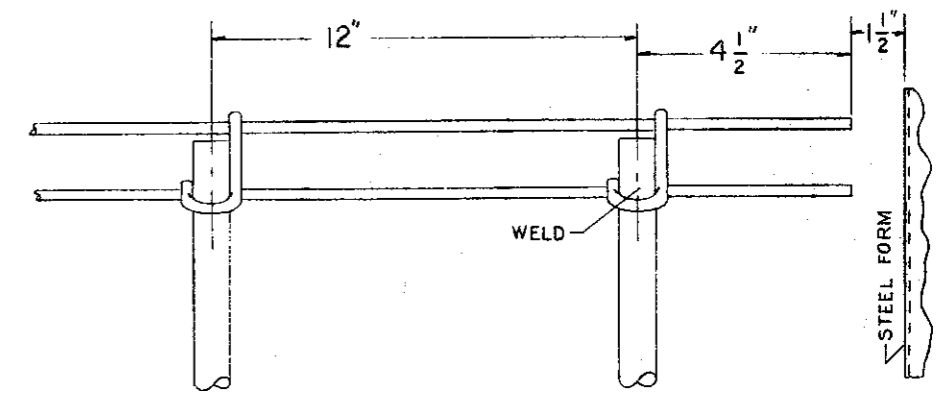
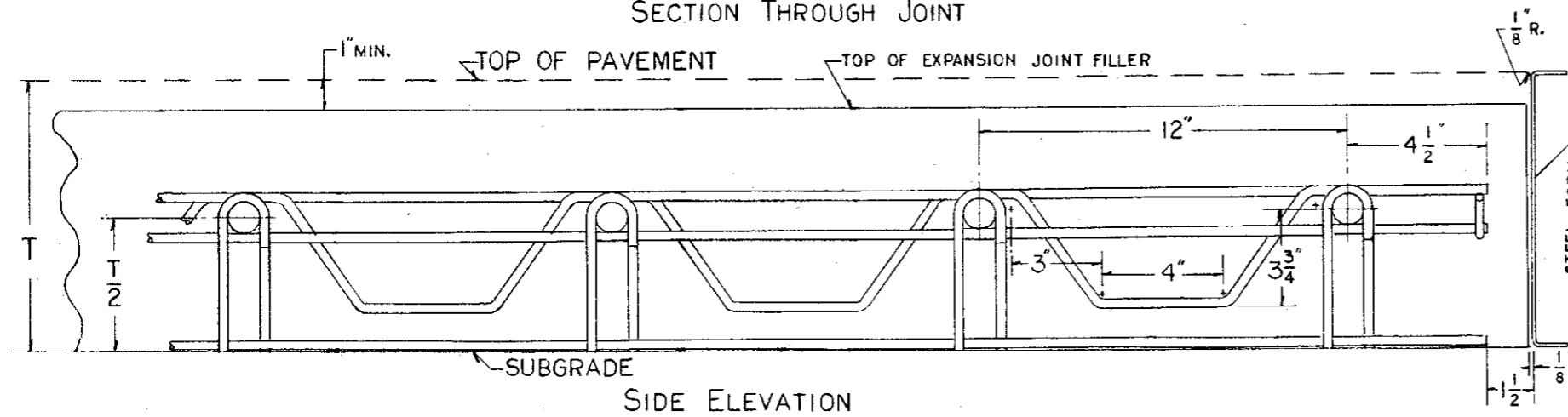
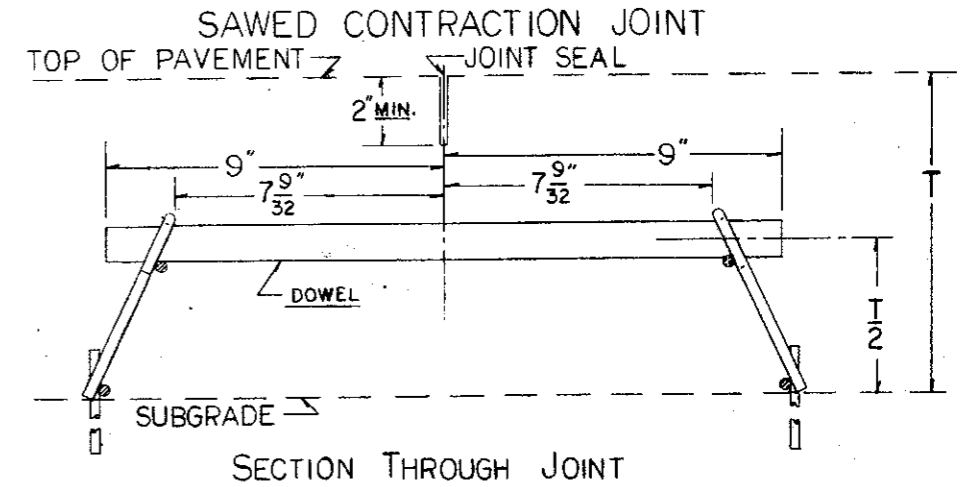
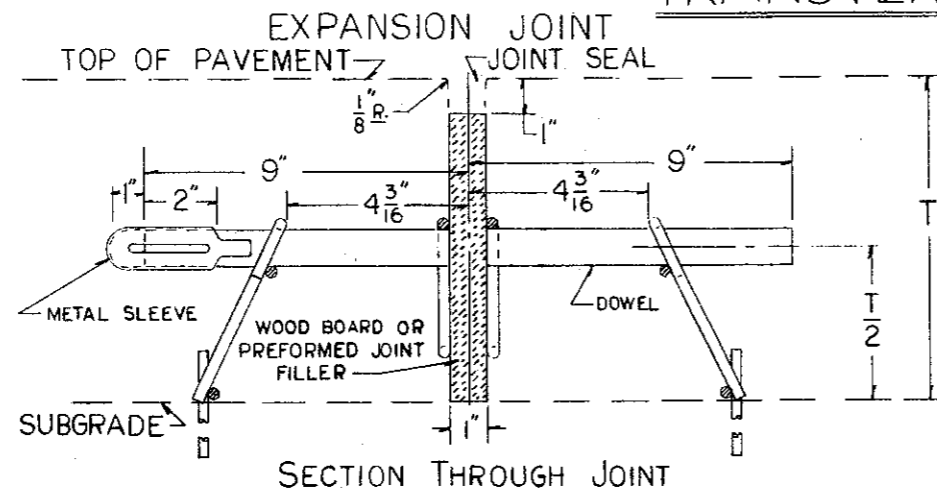
BUREAU OF LOCATION AND DESIGN
OHIO DEPARTMENT OF HIGHWAYS

PAVEMENT
JOINT ASSEMBLY
NO. 6

DATE:
10-6-55
3-9-56
12-10-56
4-23-59

APPROVED
Warren Sherman
ENGINEER OF LOCATION & DESIGN

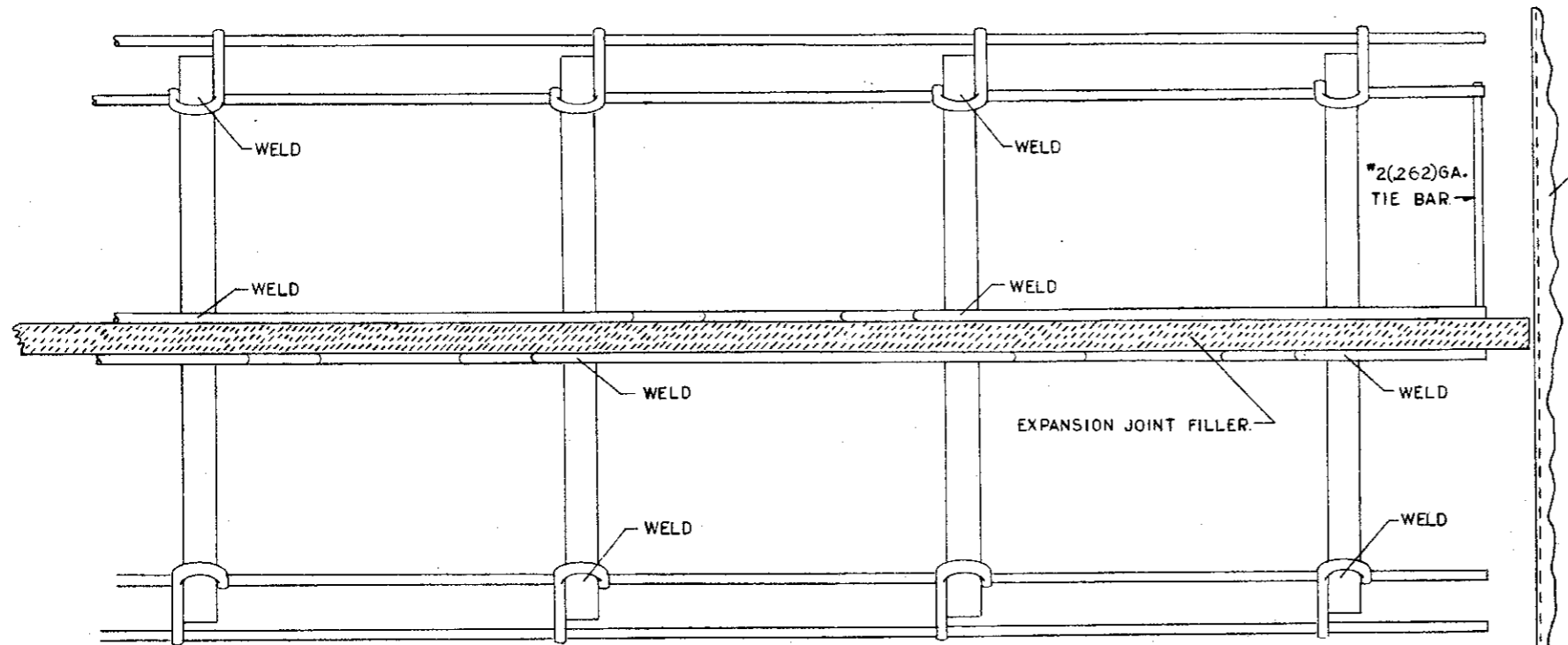
TRANSVERSE JOINTS



PLAN
ALL FRAMEWORK BARS
TO BE #0(.306)

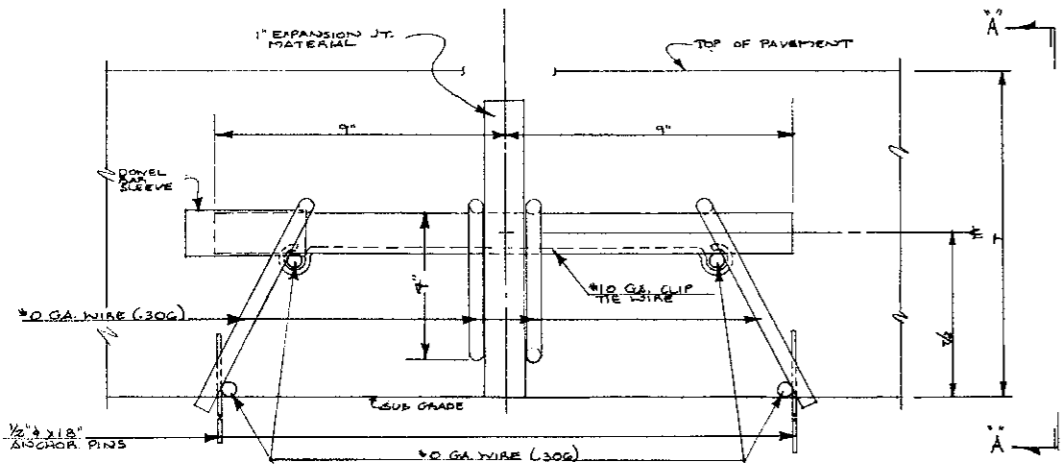
NOTES

- Dowels shall fit tightly into framework and welded at points shown.
- Framework bars to be welded at points of contact to provide a rigid framework.
- This joint assembly shall meet the requirements of Standard Drawing "T.J."
- Expansion joint material shall be adequately staked to maintain it in a vertical position.
- Top of expansion joint material shall be protected by a metal cap during the placing and finishing of concrete pavement.

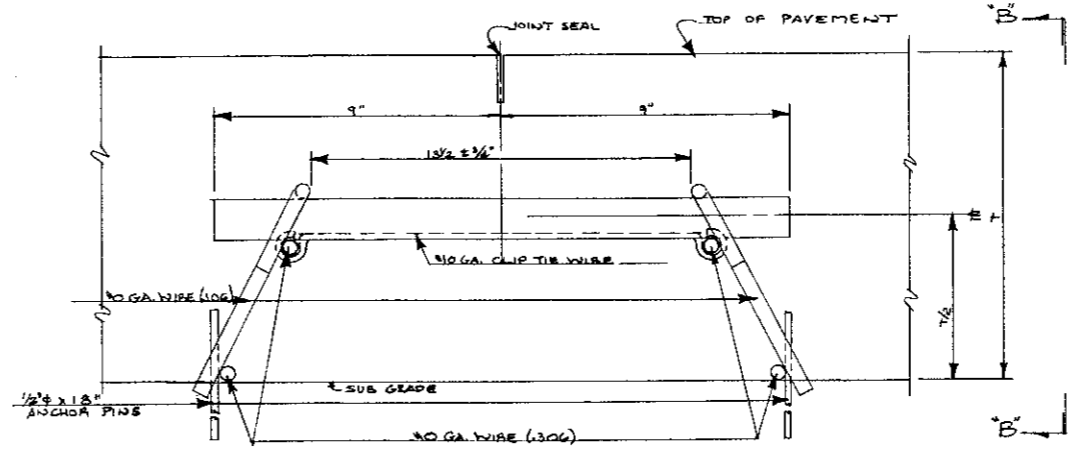


PLAN
ALL FRAMEWORK BARS TO BE #0(.306)

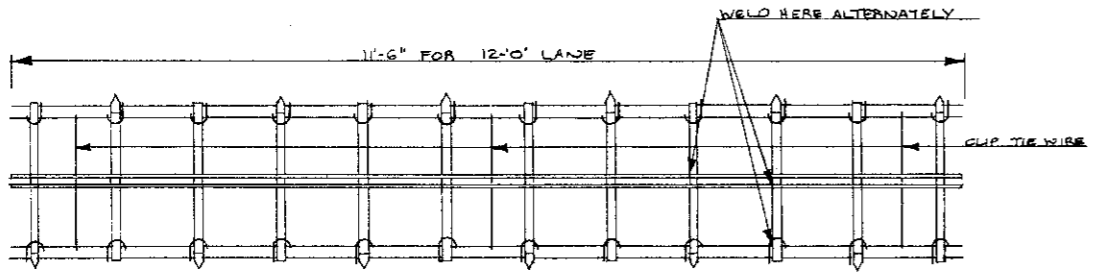
BUREAU OF LOCATION AND DESIGN OHIO DEPARTMENT OF HIGHWAYS	
PAVEMENT JOINT ASSEMBLY No. 6	
APPROVED <i>Warren J. Luman</i> ENGINEER OF LOCATION & DESIGN	
DATE: 10-6-55 3-9-56 12-10-56 4-23-59 9-12-60	



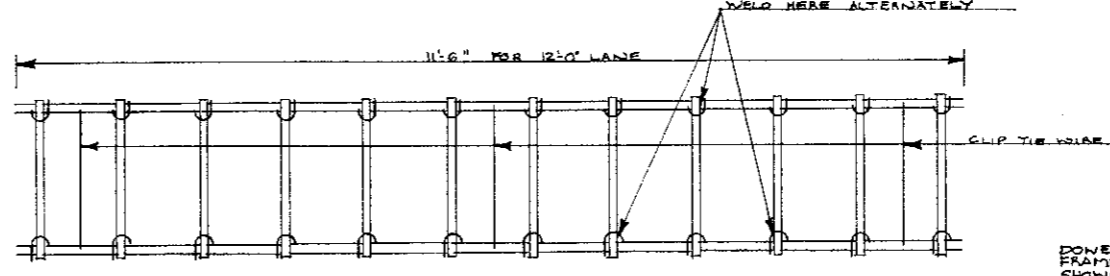
END ELEVATION
EXPANSION JOINT ASSEMBLY



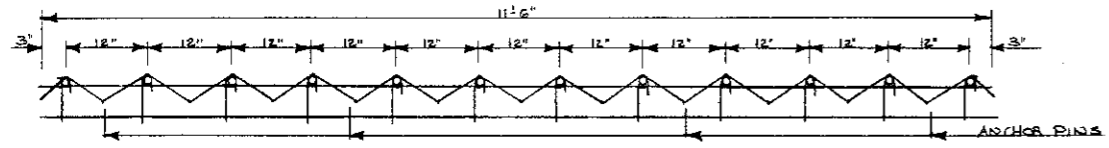
END ELEVATION
CONTRACTION JOINT ASSEMBLY



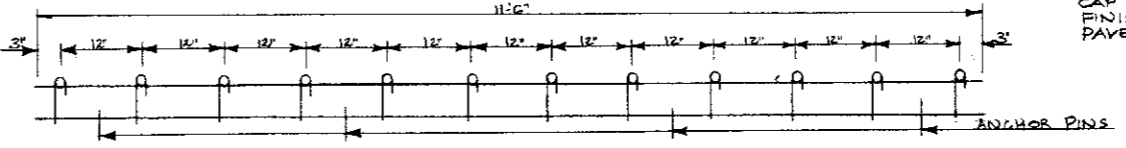
PLAN OF ASSEMBLY



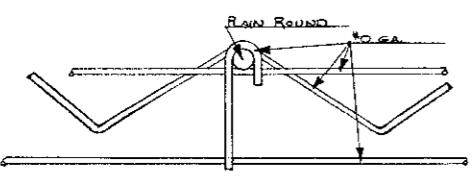
PLAN OF ASSEMBLY



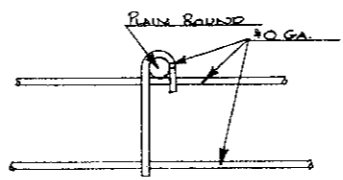
ELEVATION OF ASSEMBLY



ELEVATION OF ASSEMBLY



ELEVATION A-A



ELEVATION B-B

GENERAL NOTES
DOWELS SHALL FIT TIGHTLY INTO FRAMEWORK AND WELDED AT POINTS SHOWN.
FRAMEWORK BARS TO BE WELDED AT POINTS OF CONTACT TO PROVIDE A RIGID FRAMEWORK.
THIS JOINT ASSEMBLY SHALL MEET THE REQUIREMENTS OF STANDARD DRWG. B.P. - 4
EXPANSION JOINT MATERIAL SHALL BE ADEQUATELY STAKED TO MAINTAIN IT IN A VERTICAL POSITION.
TOP OF EXPANSION JOINT MATERIAL SHALL BE PROTECTED BY A METAL CAP DURING THE PLACING AND FINISHING OF CONCRETE PAVEMENT.

BUREAU OF LOCATION AND DESIGN OHIO DEPARTMENT OF HIGHWAYS	
PAVEMENT JOINT ASSEMBLY No. 6	DATE 3-20-68
	APPROVED <i>R.E. Little</i> ENGINEER OF LOCATION & DESIGN