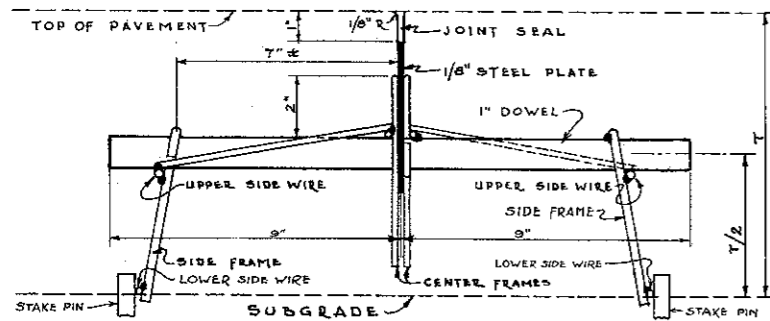
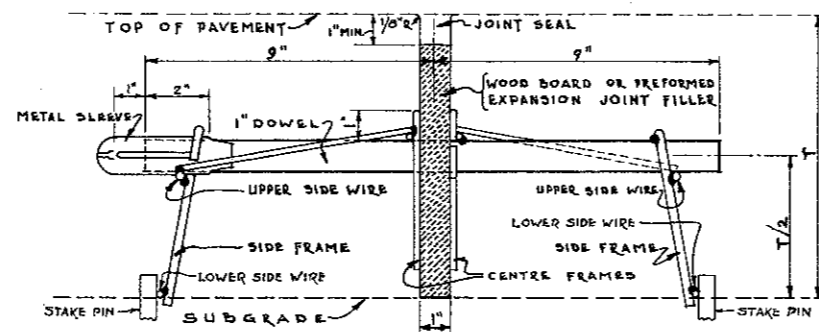


TRANSVERSE JOINTS

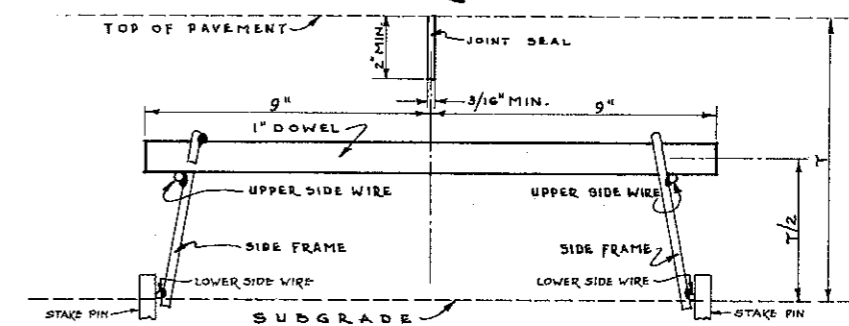
IMPRESSED CONTRACTION JOINT



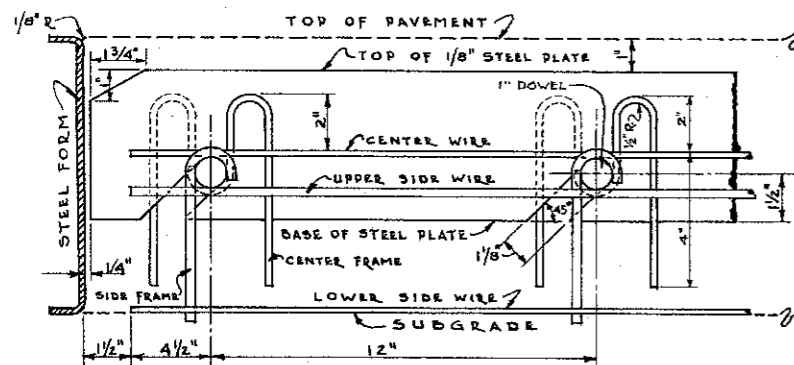
EXPANSION JOINT



SAWED CONTRACTION JOINT

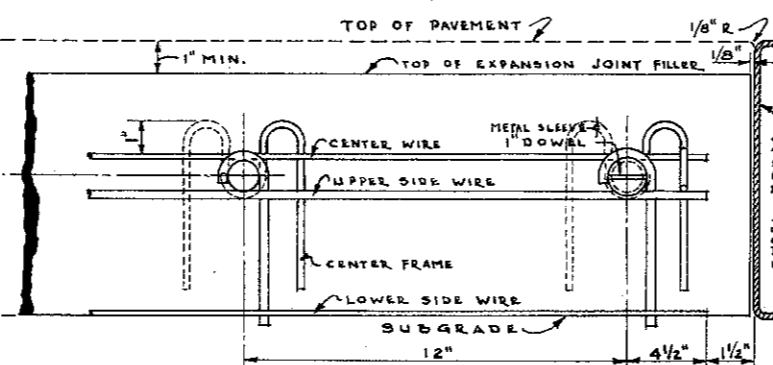


SECTION THROUGH JOINT



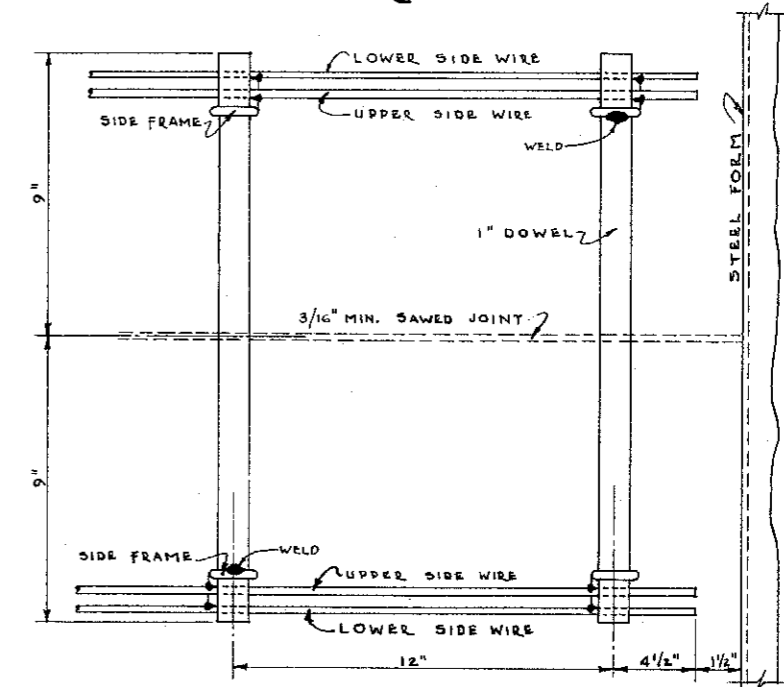
SIDE ELEVATION

SECTION THROUGH JOINT

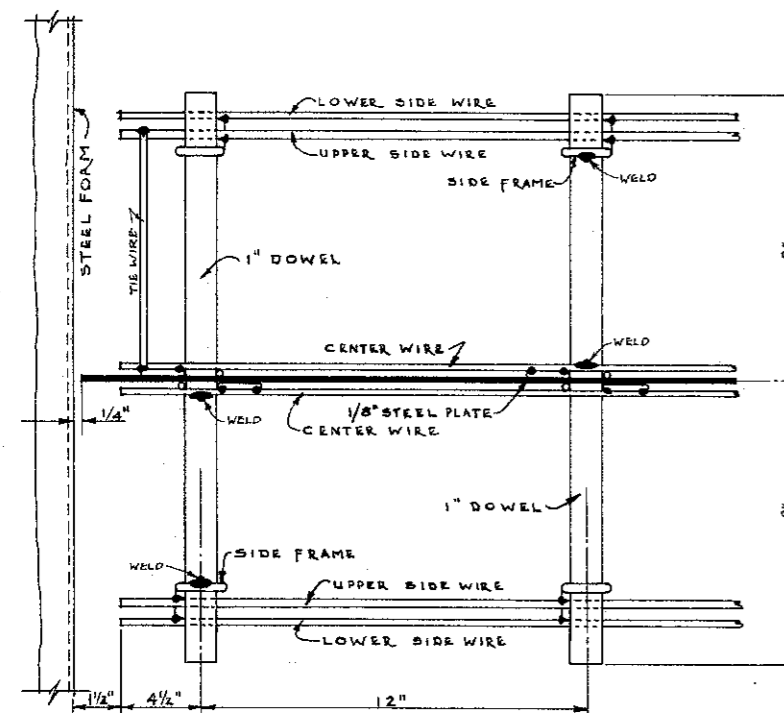


SIDE ELEVATION

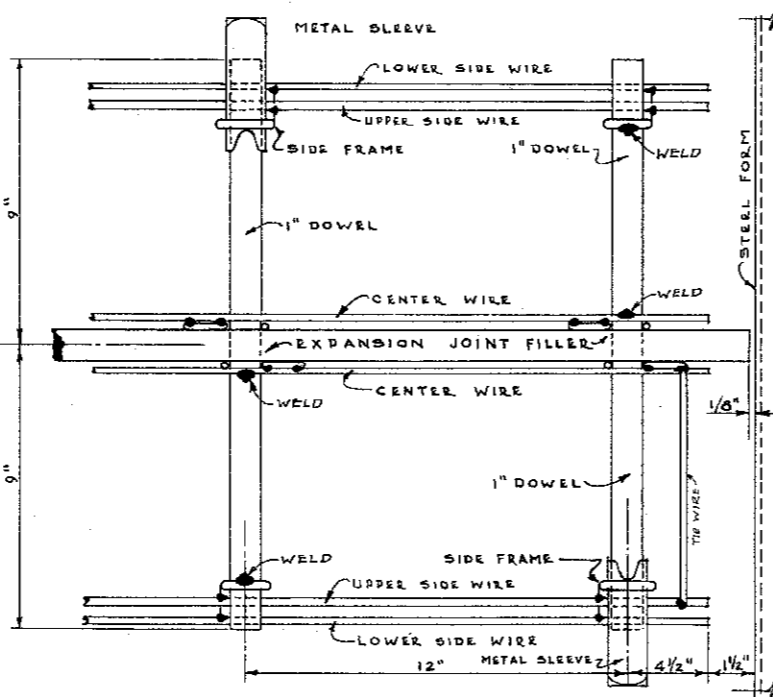
SECTION THROUGH JOINT



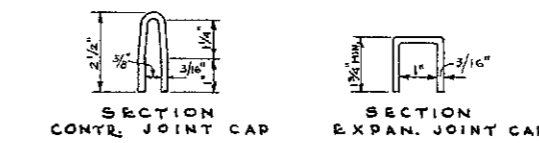
PLAN



PLAN

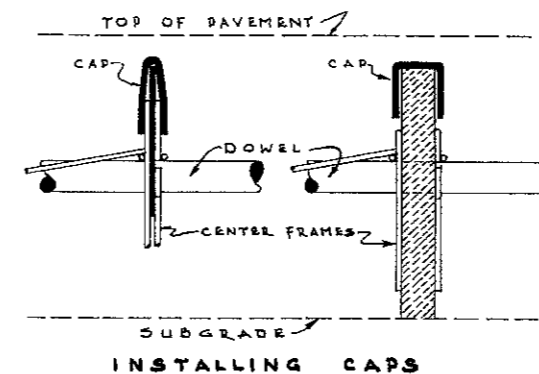


PLAN



SECTION CONTR. JOINT CAP

SECTION EXPAN. JOINT CAP



INSTALLING CAPS

UPPER AND LOWER SIDE WIRES AND SIDE FRAMES No. 0 GAGE (0.3065").
 CENTER WIRES AND CENTER FRAMES No. 3 GAGE (0.2437").
 SIDE WIRES, SIDE FRAMES, CENTER WIRES AND CENTER FRAMES TO BE WELDED
 AT ALL POINTS OF CONTACT WITH EACH OTHER.

BUREAU OF LOCATION AND DESIGN
 OHIO DEPARTMENT OF HIGHWAYS

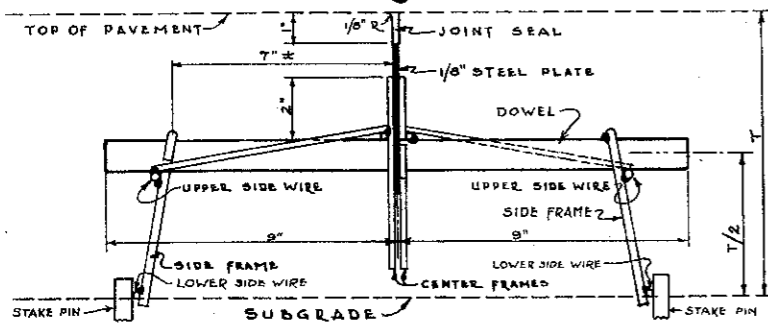
**PAVEMENT
 JOINT ASSEMBLY
 No. 9**

DATE
 5-1-37

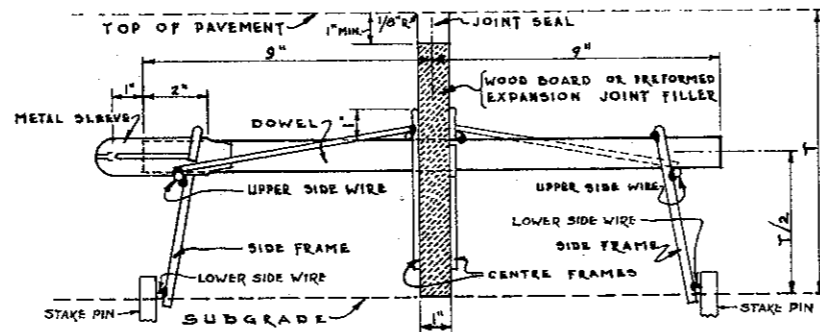
APPROVED
P.E. Shultz
 ENGINEER OF LOCATION & DESIGN

TRANSVERSE JOINTS

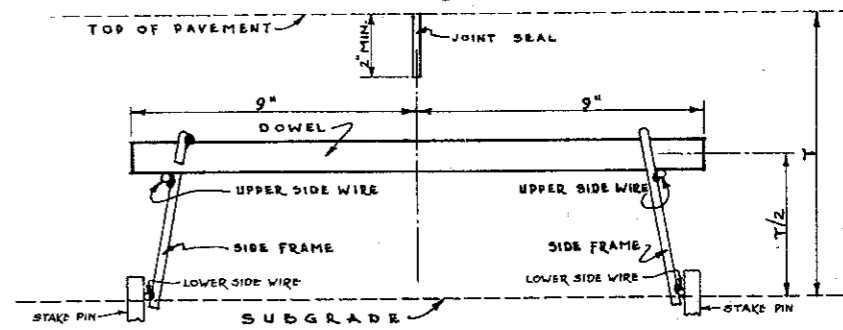
PLATE CONTRACTION JOINT



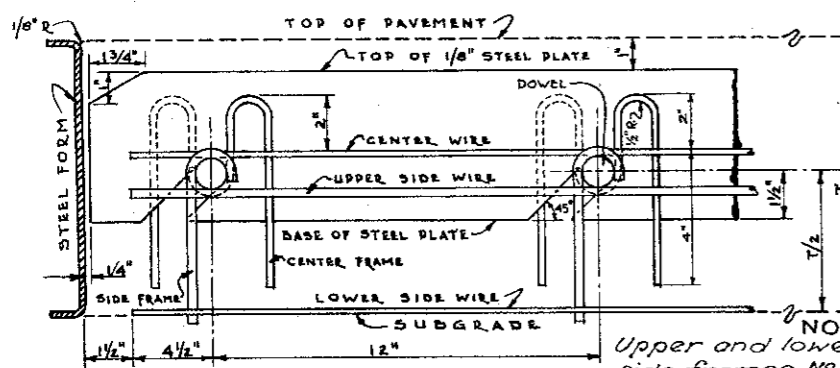
EXPANSION JOINT



SAWED CONTRACTION JOINT

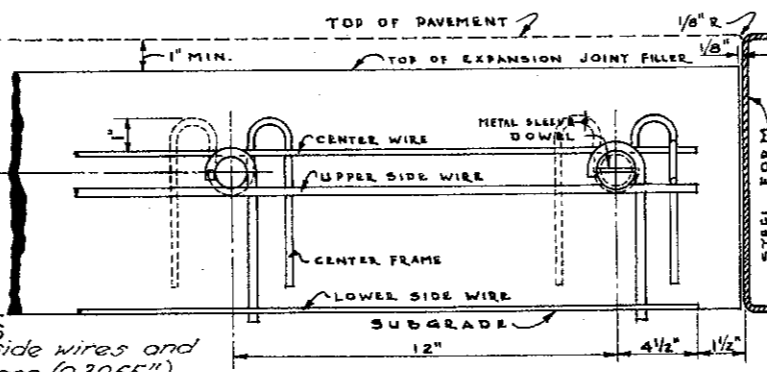


SECTION THROUGH JOINT



SIDE ELEVATION

SECTION THROUGH JOINT



SIDE ELEVATION

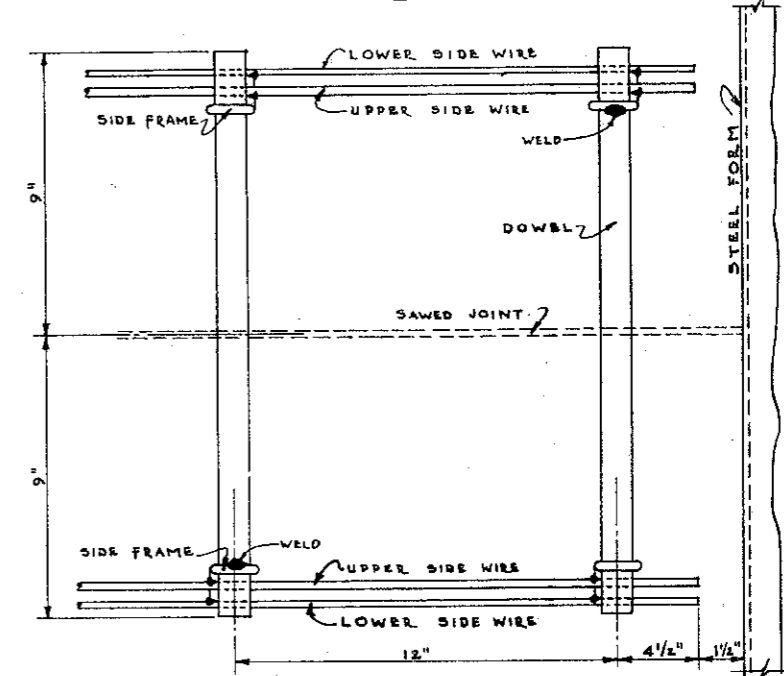
NOTES

Upper and lower side wires and side frames No. 0 gage (0.3065")

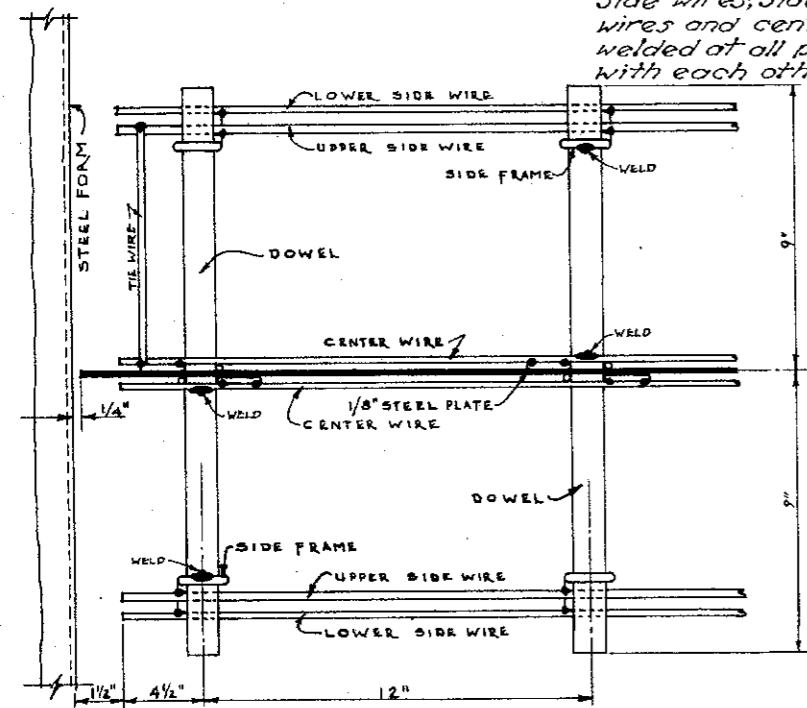
Center wires and center frames No. 3 gage (0.2437")

Side wires, side frames, center wires and center frames to be welded at all points of contact with each other.

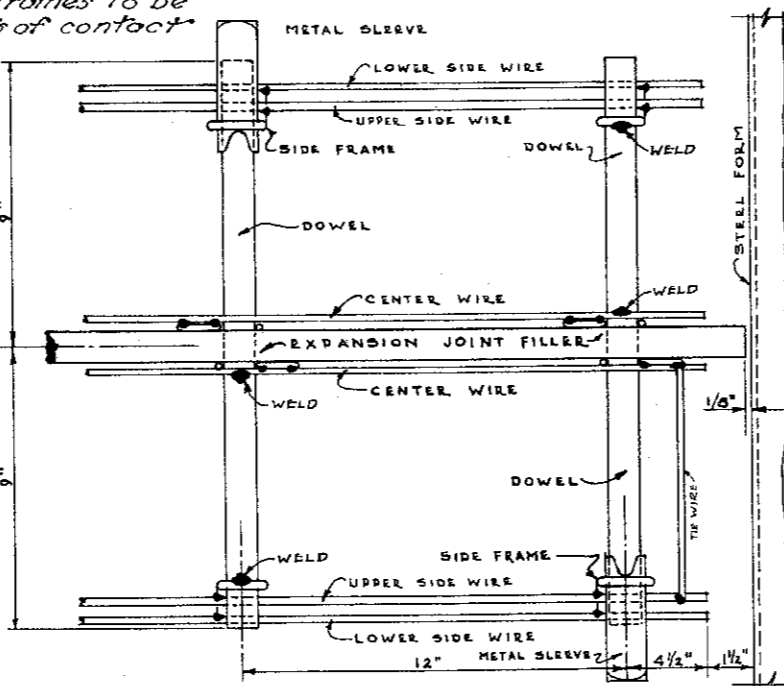
SECTION THROUGH JOINT



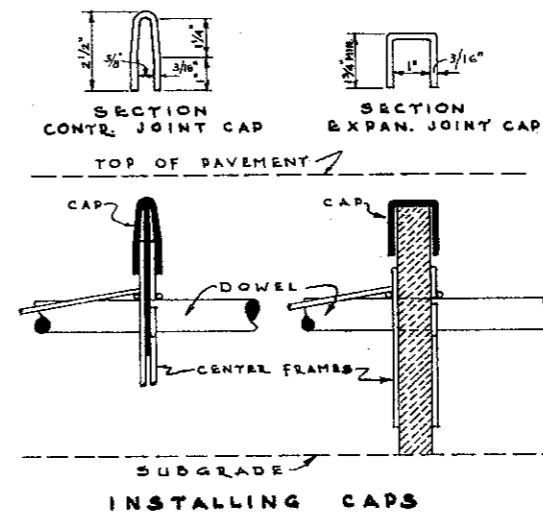
PLAN



PLAN



PLAN



NOTES

This joint assembly shall meet the requirements of Standard Drawing "T.J."

Top of expansion joint material shall be protected by a metal cap during the placing and finishing of concrete pavement.

BUREAU OF LOCATION AND DESIGN
OHIO DEPARTMENT OF HIGHWAYS

PAVEMENT JOINT ASSEMBLY NO. 9

DATE
5-1-57
9-12-60

APPROVED

[Signature]
ENGINEER OF LOCATION & DESIGN