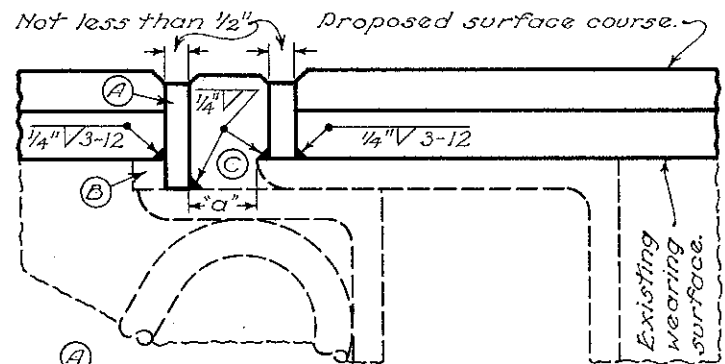


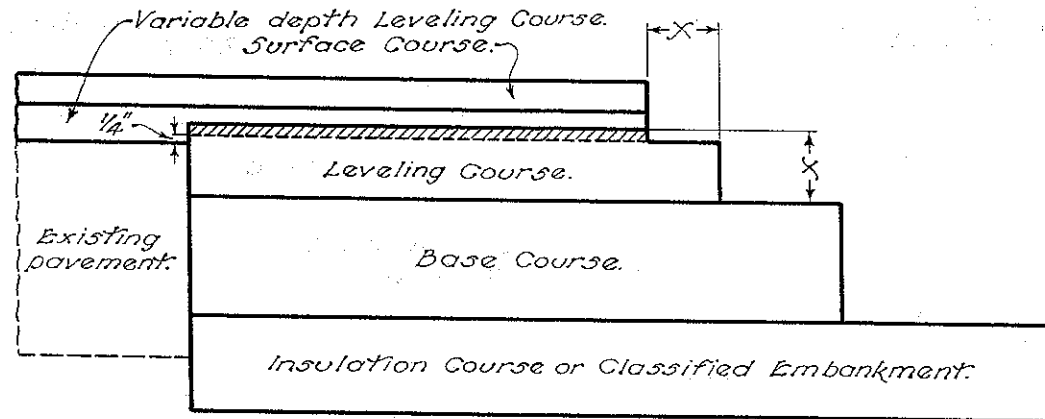
RESURFACING



Alternate detail to be used if dimension "a" is less than anticipated expansion.
 Bar (B) will be made 2" wide to provide better anchorage of bar (A).
 (C) F-1 filler or similar bituminous material.
 Steel bars shall be structural grade steel.

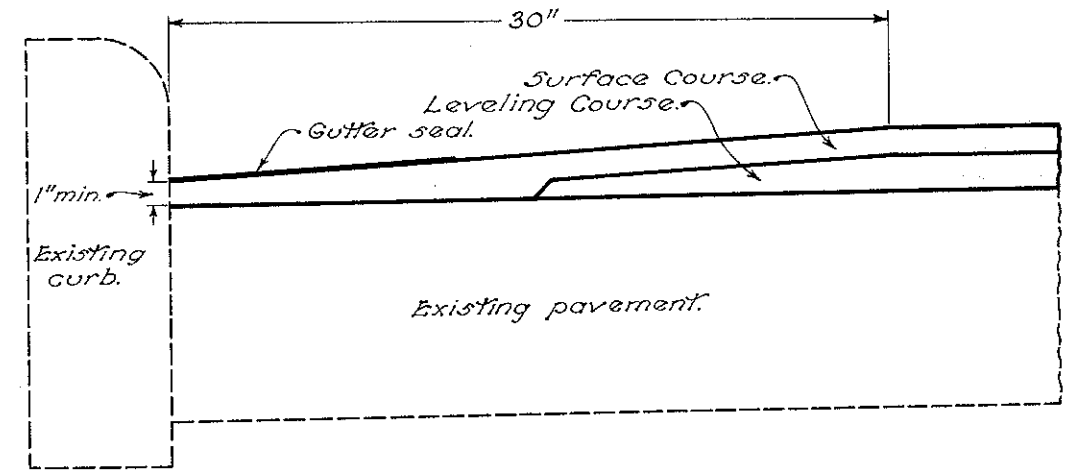
ALTERNATE DETAIL

RAISING EXPANSION JOINTS AT BRIDGE



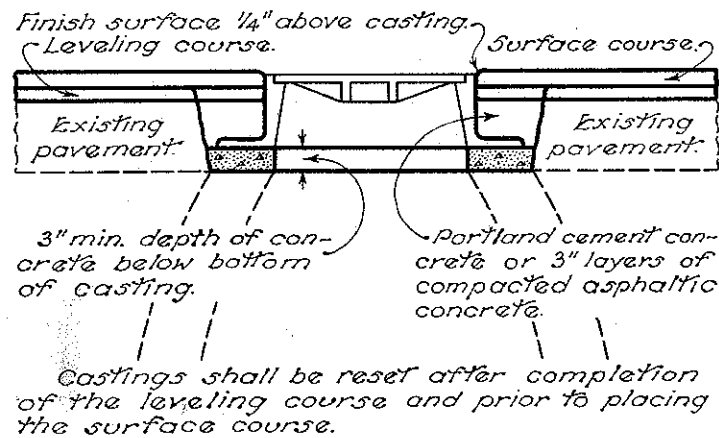
Where the leveling course in the widened area would finish more than 1/4 inch above the edge of the existing pavement, that portion below the dashed line shall be placed and compacted in a separate operation. The hatched portion above the dashed line shall be placed simultaneously with the full width leveling course.

COURSE DETAIL FOR WIDENING

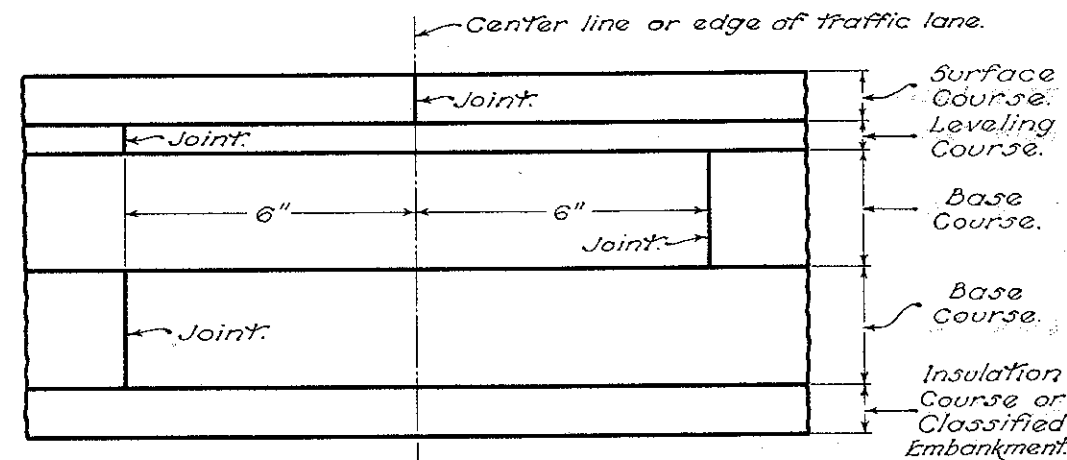


Special care shall be exercised during construction to obtain maximum compaction of bituminous concrete in all gutters.

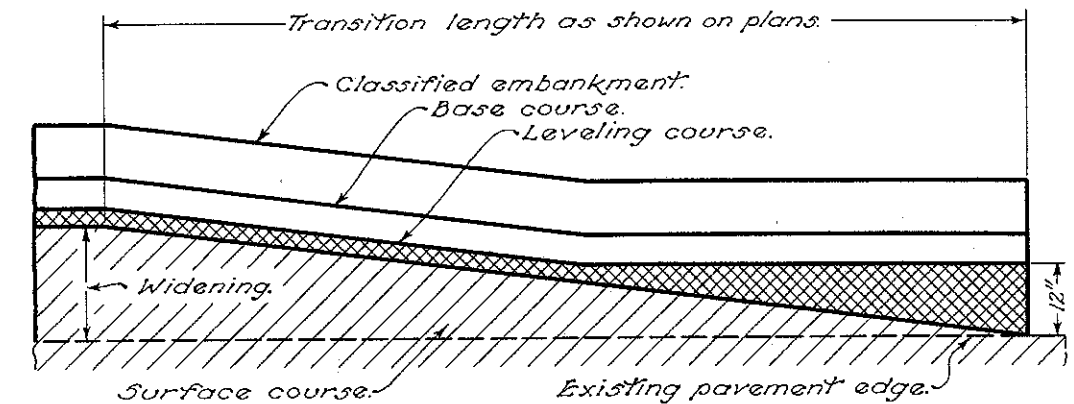
GUTTER FINISH



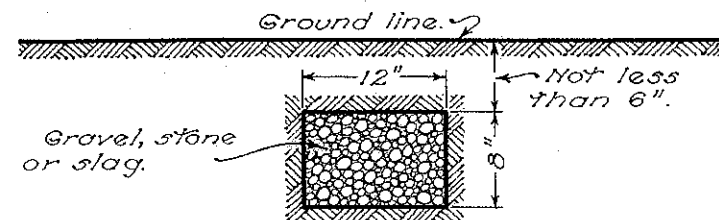
MANHOLES ADJUSTED TO GRADE



LAPPING LONGITUDINAL JOINTS

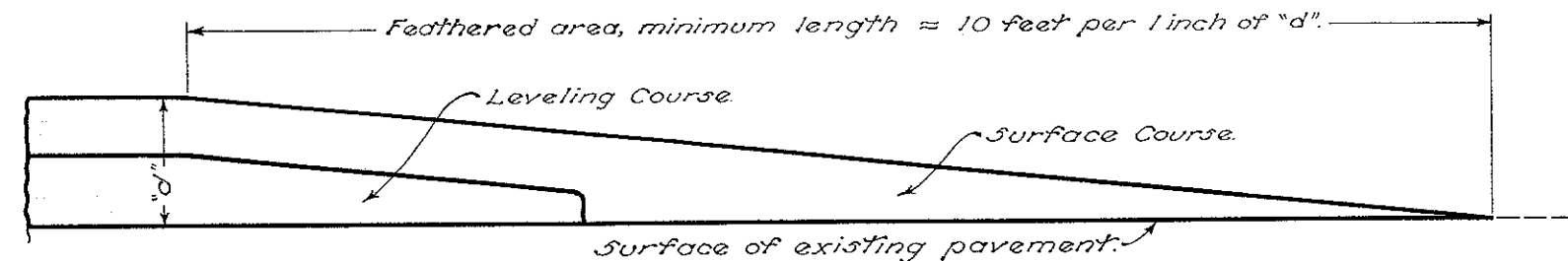


MERGING EDGE OF PAVEMENT WIDENING WITH EDGE OF EXISTING PAVEMENT



Underdrains to be placed where and as directed by the Engineer.

STONE UNDERDRAIN NO. 2



PLACING FEATHERED AREAS

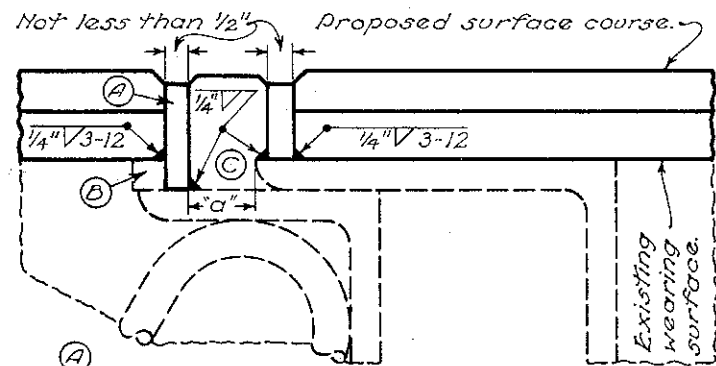
BUREAU OF LOCATION AND DESIGN
 OHIO DEPARTMENT OF HIGHWAYS

RESURFACING

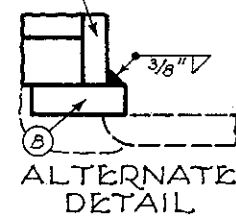
STANDARD CONSTRUCTION DRAWING
 APPROVED: *[Signature]* CHIEF ENGINEER

T-35
 DATE: 5-16-51

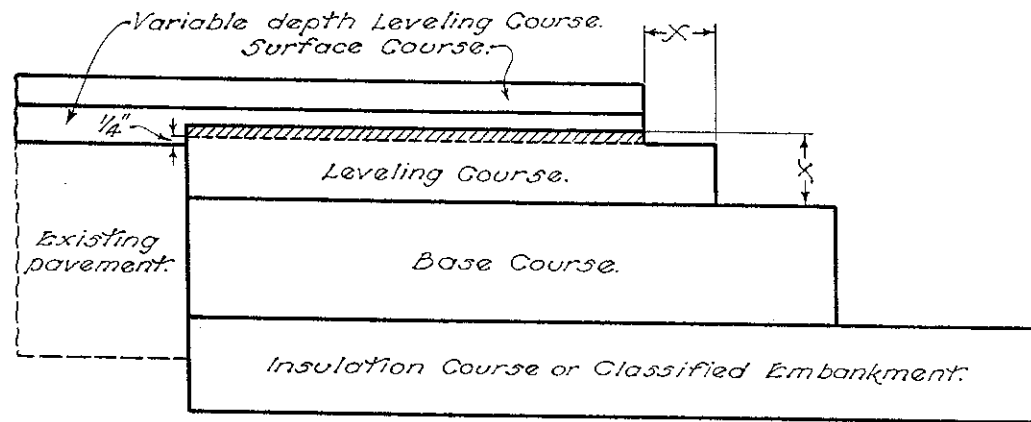
RESURFACING



Alternate detail to be used if dimension "a" is less than anticipated expansion.
 Bar (B) will be made 2" wide to provide better anchorage of bar (A).
 (C) F-1 filler or similar bituminous material.
 Steel bars shall be structural grade steel.

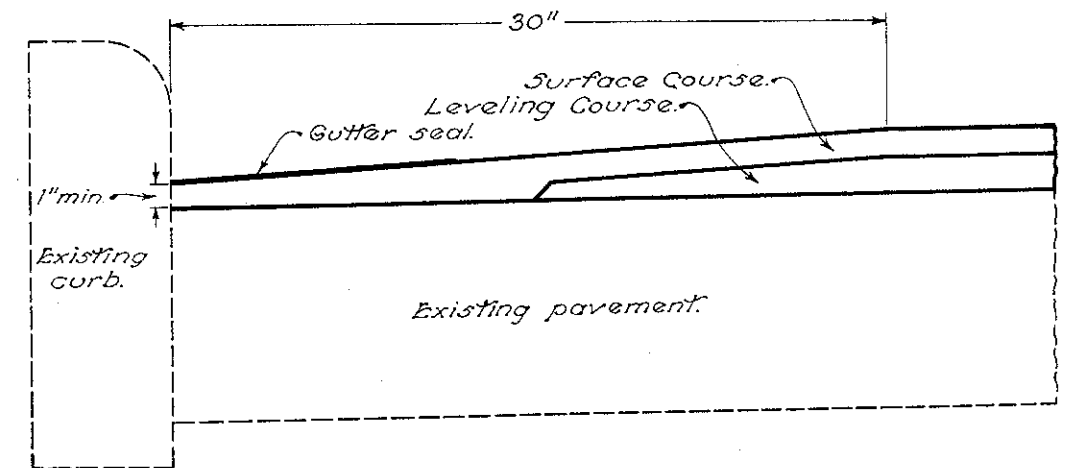


RAISING EXPANSION JOINTS AT BRIDGE



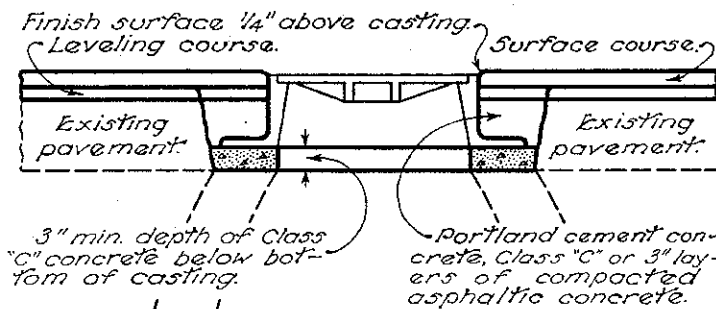
Where the leveling course in the widened area would finish more than 1/4 inch above the edge of the existing pavement, that portion below the dashed line shall be placed and compacted in a separate operation. The hatched portion above the dashed line shall be placed simultaneously with the full width leveling course.

COURSE DETAIL FOR WIDENING



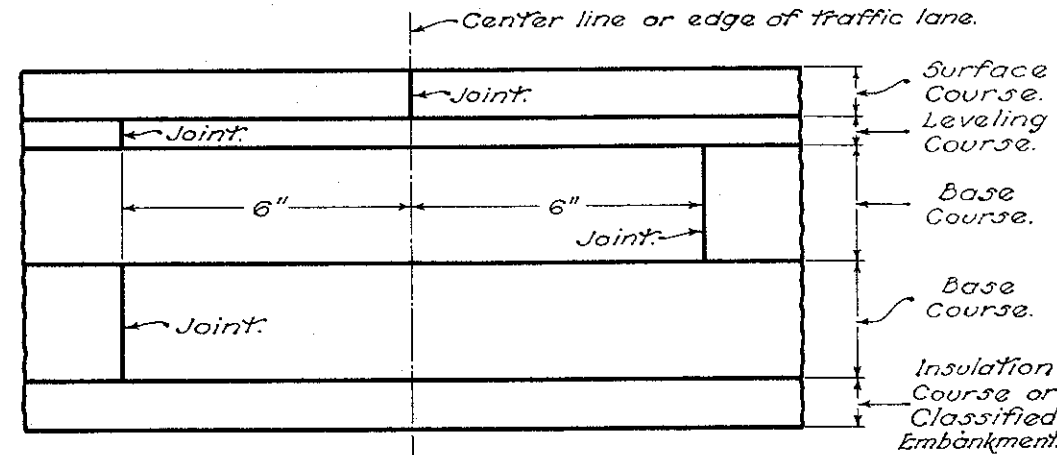
Special care shall be exercised during construction to obtain maximum compaction of bituminous concrete in all gutters.

GUTTER FINISH

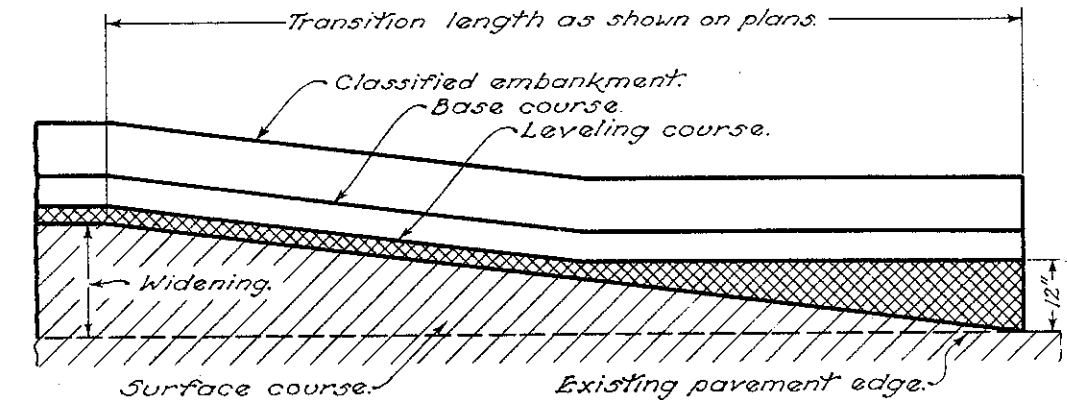


Castings shall be reset after completion of the leveling course and prior to placing the surface course.

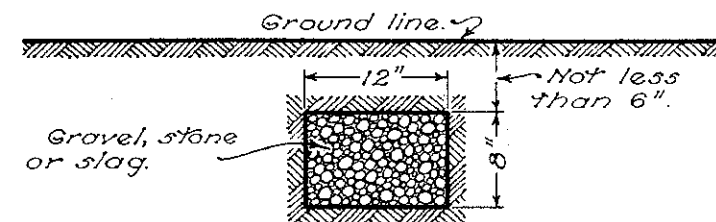
CASTINGS ADJUSTED TO GRADE



LAPPING LONGITUDINAL JOINTS

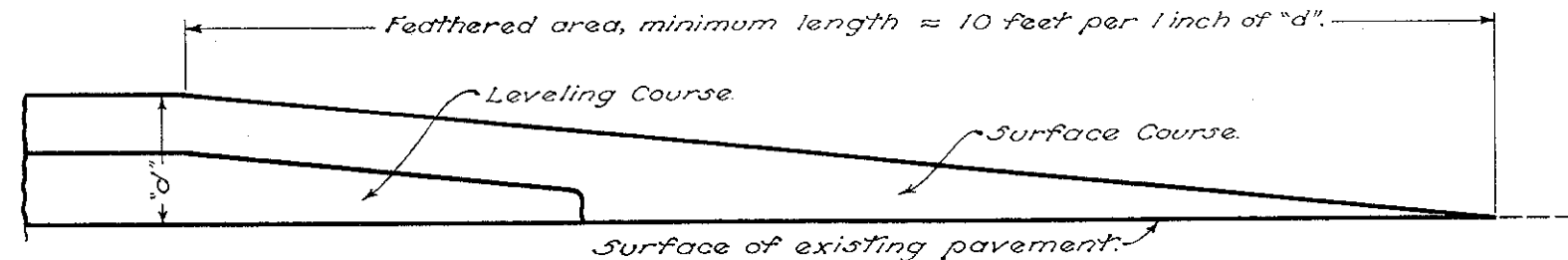


MERGING EDGE OF PAVEMENT WIDENING WITH EDGE OF EXISTING PAVEMENT



Underdrains to be placed where and as directed by the Engineer.

STONE UNDERDRAIN NO. 2



PLACING FEATHERED AREAS

BUREAU OF LOCATION AND DESIGN
 OHIO DEPARTMENT OF HIGHWAYS

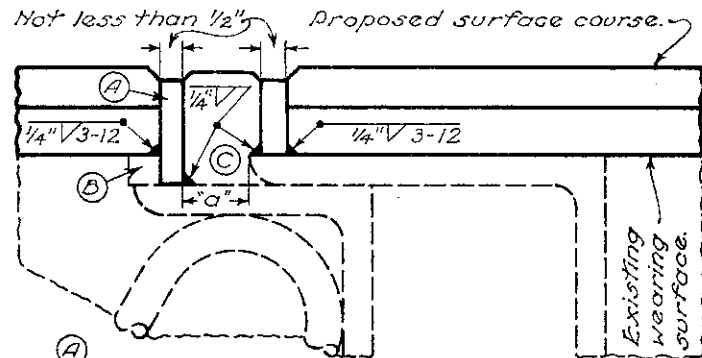
RESURFACING

STANDARD CONSTRUCTION DRAWING
 APPROVED _____ CHIEF ENGINEER

T-35

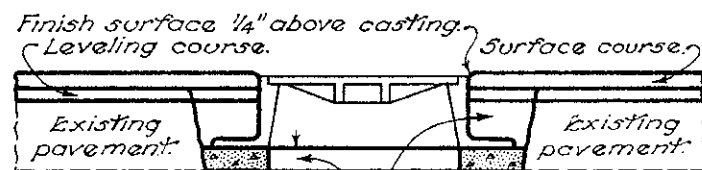
DATE 5-16-51
 10-1-52

RESURFACING



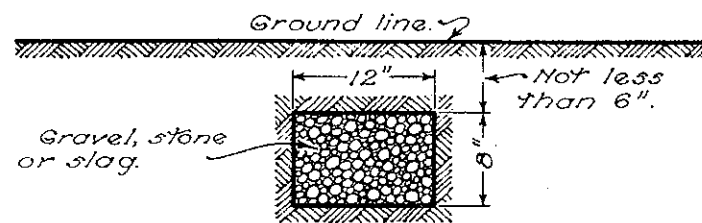
Alternate detail to be used if dimension "a" is less than anticipated expansion.
 Bar (B) will be made 2" wide to provide better anchorage of bar (A).
 (C) F-1 filler or similar bituminous material.
 Steel bars shall be structural grade steel.

RAISING EXPANSION JOINTS AT BRIDGE



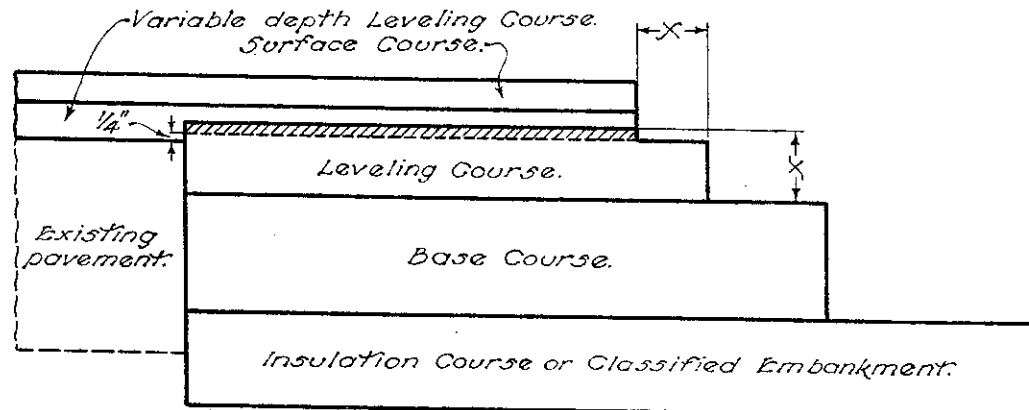
Castings shall be reset after completion of the leveling course and prior to placing the surface course.

CASTINGS ADJUSTED TO GRADE



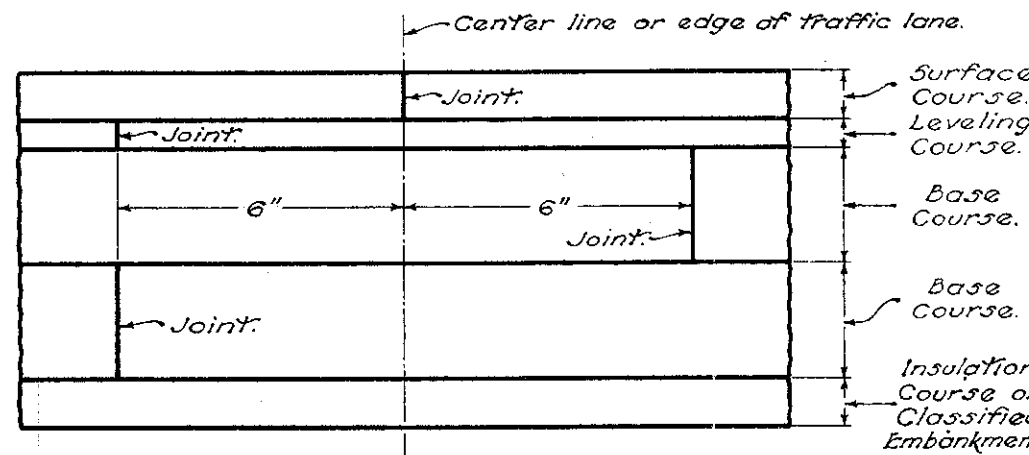
Underdrains to be placed where and as directed by the Engineer.

STONE UNDERDRAIN NO. 2

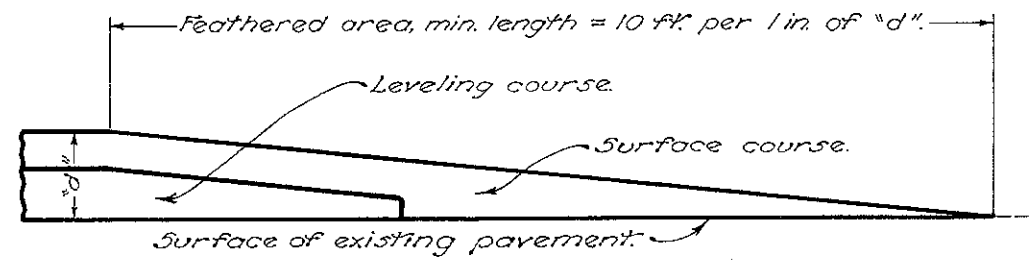


Where the leveling course in the widened area would finish more than 1/4 inch above the edge of the existing pavement that portion below the dashed line shall be placed and compacted in a separate operation. The hatched portion above the dashed line shall be placed simultaneously with the full width leveling course.

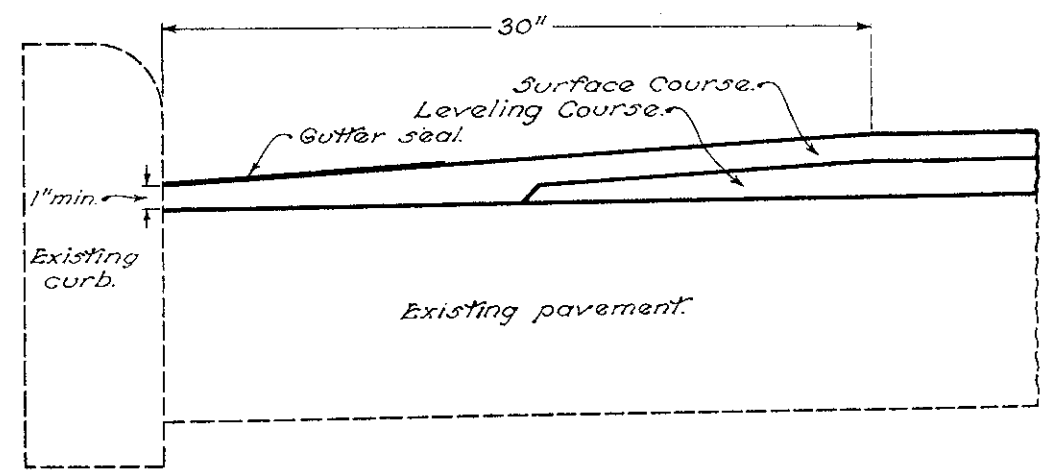
COURSE DETAIL FOR WIDENING



LAPPING LONGITUDINAL JOINTS

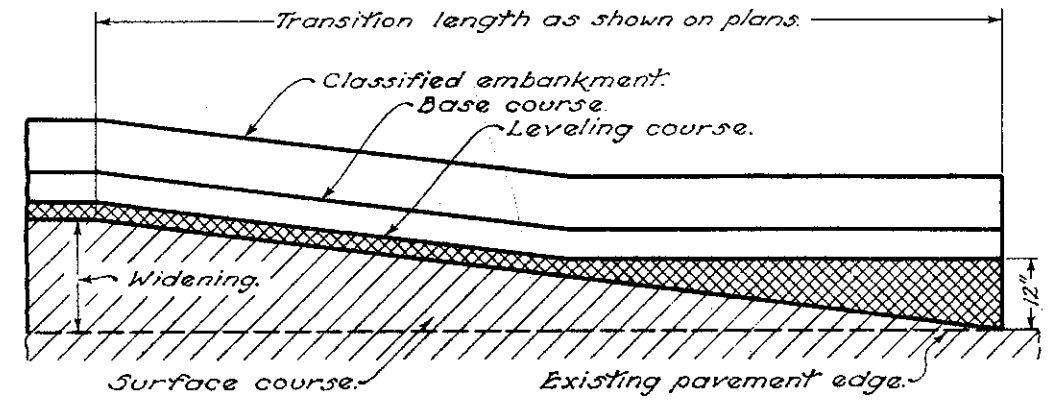


PLACING FEATHERED AREAS

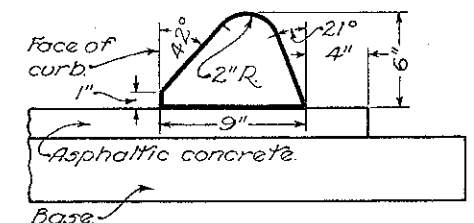


Special care shall be exercised during construction to obtain maximum compaction of bituminous concrete in all gutters.

GUTTER FINISH



MERGING EDGE OF PAVEMENT WIDENING WITH EDGE OF EXISTING PAVEMENT



TYPE I ASPHALTIC CONCRETE CURB

BUREAU OF LOCATION AND DESIGN
 OHIO DEPARTMENT OF HIGHWAYS

RESURFACING

STANDARD CONSTRUCTION DRAWING **T-35**

APPROVED *[Signature]* ENGR. L. & D.

DATE
 5-16-51
 10-1-52
 1-2-56

Revised and Number changed to BP-5 ; June 1, 1965