

**PAINTING**

Shop and field painting to be governed by Item I-10. Using Section 9.4 or 9.5 of the "Material Details" for the shop coat and Section 9.3 of the "Material Details" for the two field coats of white paint.

**NOTE**

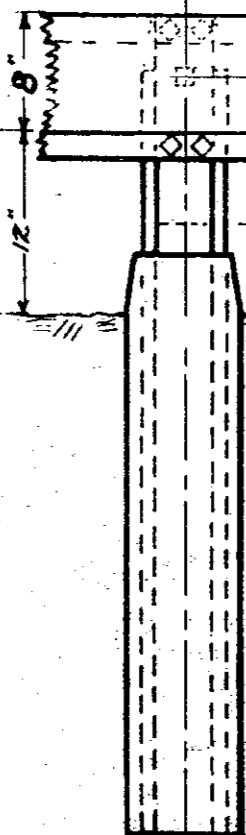
All bends in posts and rails have  $\frac{1}{8}$ " inside radius

Spacer for keeping adjoining ends of rails in line

Machine Bolt  $\frac{1}{2} \times 1$  with lock washer



4'-8"  
3'-0"

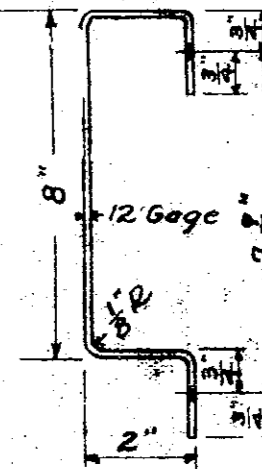


Moment of Inertia of section of post -  $4.911 \text{ in.}^4$   
Max. bending moment at 16000 lbs. per square inch, fiber stress 34,928 In. lbs. equivalent to load of 3493 lbs. at center of 8" rail.

Pressed Steel Rail  
Pressed Steel Post

Extra Intermediate Post - to be used in special cases where additional strength is required.

BILL OF MATERIAL - TWO PANELS.	
2 Posts	Pressed Steel 4x4x D
2 Rails	Pressed Steel A x 10'-0"
	2" Square Plate
2 Joint Spacers	$\frac{1}{2}$ " Washer.
	$\frac{1}{2} \times 2\frac{1}{4}$ " Special Bolt + Nut.
8 Machine Bolts	$\frac{1}{2} \times 1$ "
8 Lock Washers	$\frac{1}{2}$ "



All surfaces of posts and rails to be painted by manufacturer with one priming coat.

All bolts to be dipped in paint just before using.

Posts to be pressed from basic open-hearth steel sheets - 10 gauge.

Rails to be pressed from basic open-hearth steel sheets - 12 gauge.

All joints in rail to be provided with joint spacers as shown.

Bolt holes in posts to be slotted horizontally.

**TYPE "G" GUARD RAIL**

DIVISION OF HIGHWAYS

OHIO

DRAWING 108 CONST. MAY, 1926.