

**NOTES**

**GENERAL:** This drawing depicts the application of truncated domes on existing concrete curb ramps where the existing ramps are otherwise ADAAG compliant, and has sound concrete. For the installation of truncated domes with new curb ramps, see SCD BP-7.1.

**DETECTABLE WARNINGS:** Truncated domes are the only acceptable method for providing detectable warnings. Domes pattern and alignment should be as shown in TRUNCATED DOME DETAILS.

**PLACEMENT:** Truncated domes are to be installed at any location where pedestrians might cross paths with vehicular traffic lanes, such as the base of curb ramps or at blended curbs. A 24" [610] strip of domes is to be installed for the full width of the ramp. Typical placement locations for standard curb ramp types are shown below.

**ALIGNMENT:** Truncated domes should be aligned with the primary direction of pedestrian travel as shown on the DOME ALIGNMENT Detail. Normally the domes should be flush with the back of the curb, but in skewed conditions can be up to 8" [200] behind the curb, as shown on the DOME ALIGNMENT ON RADIUS CURB Detail. For non-standard layouts, dome materials may have to be mitered and placed segmentally as shown on TREATMENT AT BLENDED CURBS Detail.

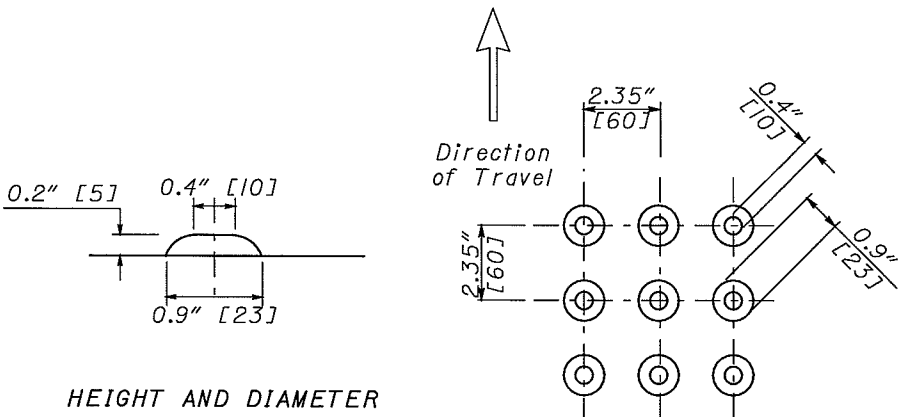
**VISUAL CONTRAST:** Color of the truncated domes should contrast with surrounding concrete walk and ramp. Use of a red blend is recommended for concrete curb ramps. Black is not an acceptable color.

**EDGES:** Truncated dome products used in conjunction with this drawing must be installed flush with the surrounding concrete walk/ramp surface. If the unbeveled edge lip of any product is greater than 1/4" [6] (or a beveled edge more than 1/2" [13]), then the domes have to be recessed into existing concrete. Sawcut existing concrete, chip and prepare surface according to manufacturer's instructions. Seal any cut edges as directed by the Engineer.

**PRODUCTS:** Only products on the Office of Roadway Engineering Service's Truncated Domes Approved List ([www.dot.state.oh.us/roadwayengineering/standards/index.asp](http://www.dot.state.oh.us/roadwayengineering/standards/index.asp)) are permitted to be used with this drawing. Such products must be installed according to the product's manufacturer. For surface applied products, this would include any mechanical fasteners and adhesives (including cure times).

**PROHIBITED PRODUCTS:** Stamped concrete methods or flexible mats are not currently allowed.

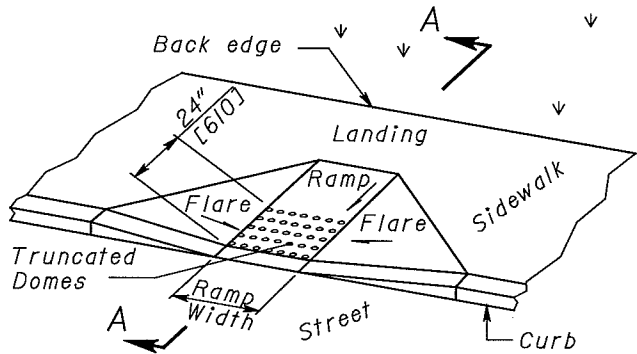
**PAYMENT:** All work needed to install a completed truncated dome retrofit is included in Item 608 - Truncated Domes, Each. This includes existing concrete preparation, products, adhesives/fasteners, installation and sealing as necessary to install product in accordance with manufacturer's instructions. Payment also includes all additional costs of sawing and preparing concrete to install a recessed product, (pavers or cast-iron, and etc.) if used.



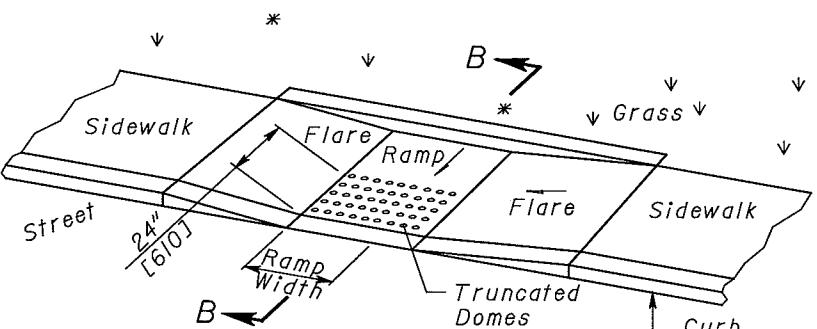
HEIGHT AND DIAMETER

SQUARE PATTERN, PARALLEL ALIGNMENT

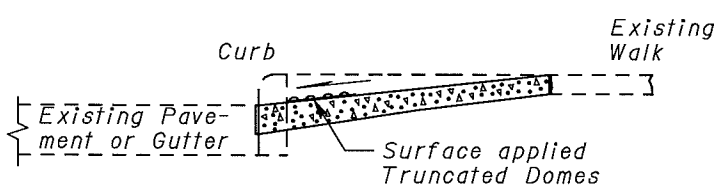
**TRUNCATED DOME DETAILS**



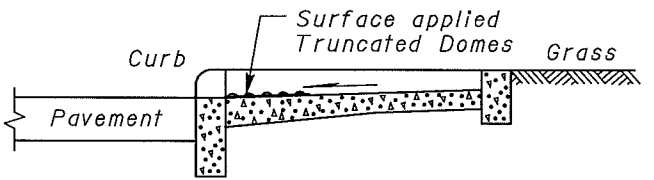
TRUNCATED DOME PLACEMENT ON PERPENDICULAR CURB RAMP



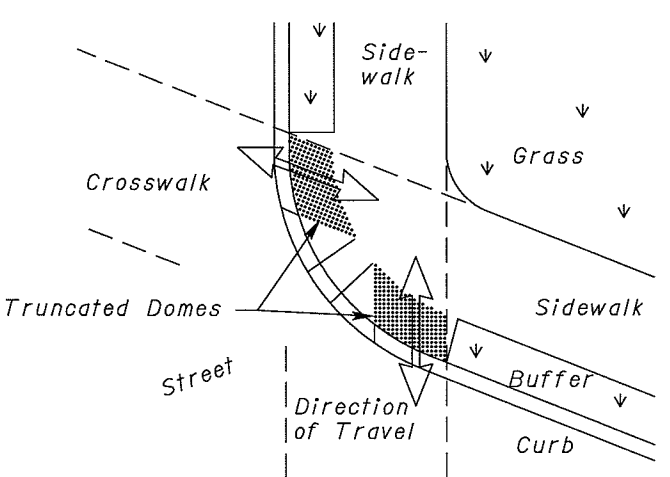
TRUNCATED DOME PLACEMENT ON PARALLEL CURB RAMP



SECTION A-A

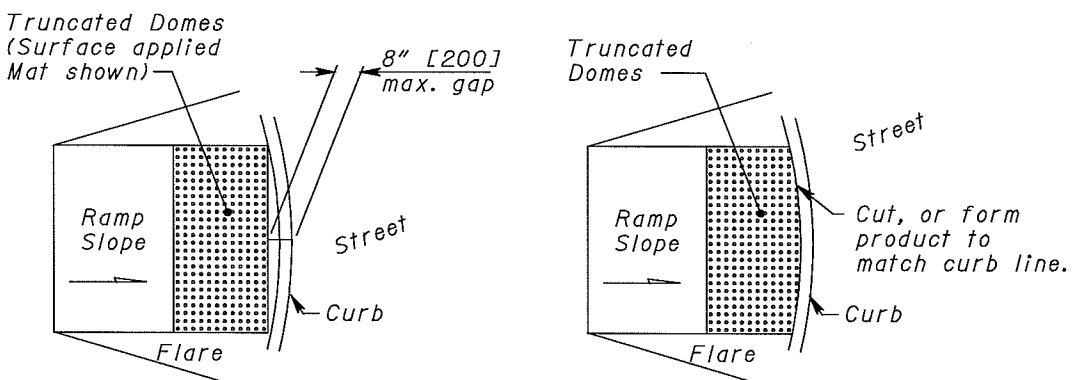


SECTION B-B



Orient In-line domes alignment with primary direction of travel.

DOME ALIGNMENT

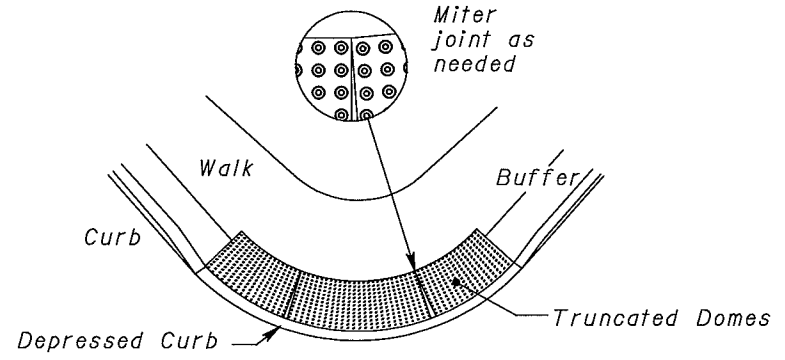


PREFERRED METHOD

ALTERNATE METHOD

Use Preferred Method for aligning truncated domes unless curb curvature would produce gap more than 8" [200] from front of curb to the domes. If gap will be greater than 8" [200] miter truncated dome product to match the back of the curb as shown in the Alternate Method. NOTE: Some approved Truncated Domes products are easier to miter than others.

DOME ALIGNMENT ON RADIUS CURB



TREATMENT AT BLENDED CURBS