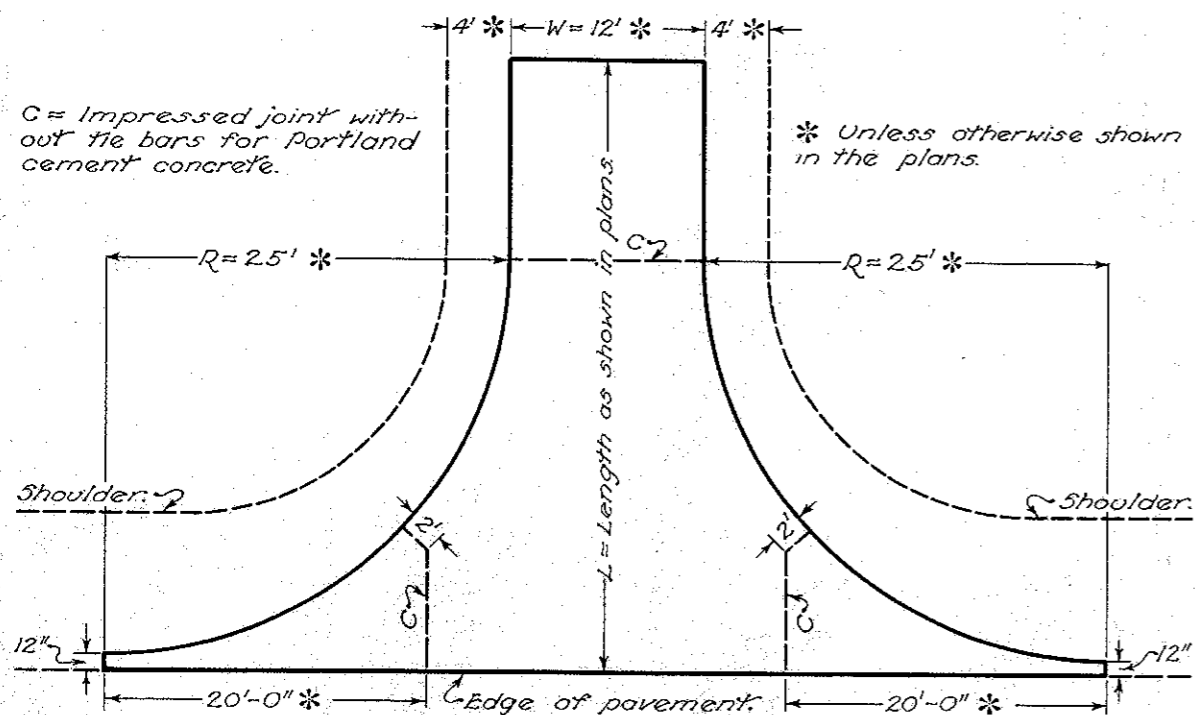
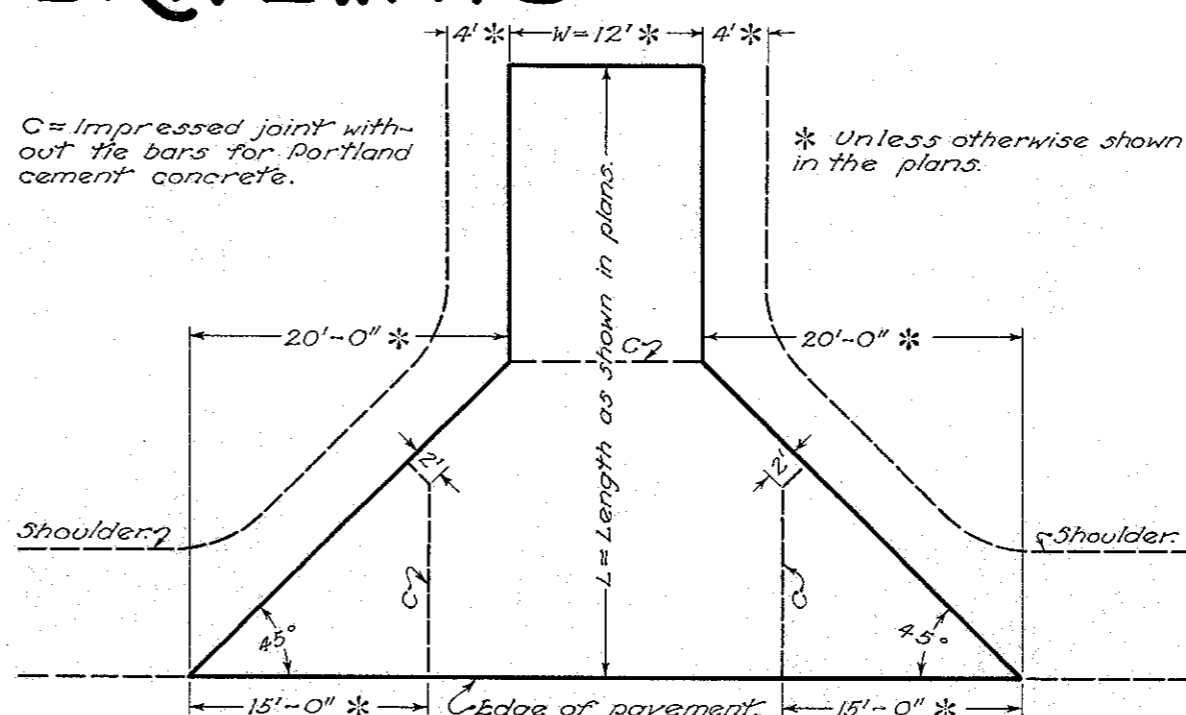


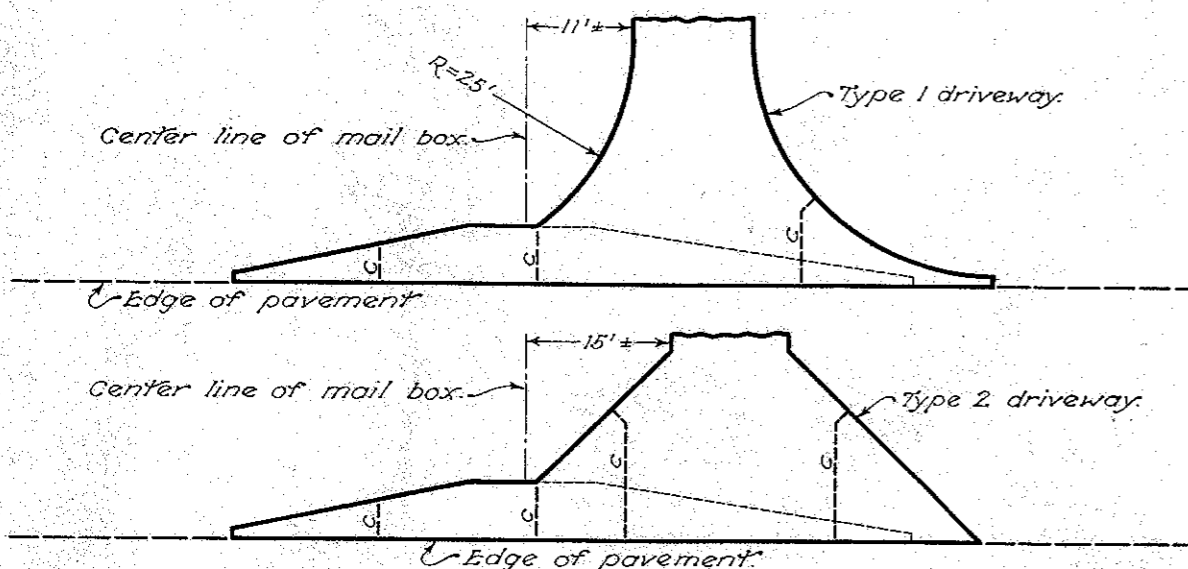
# DRIVEWAYS



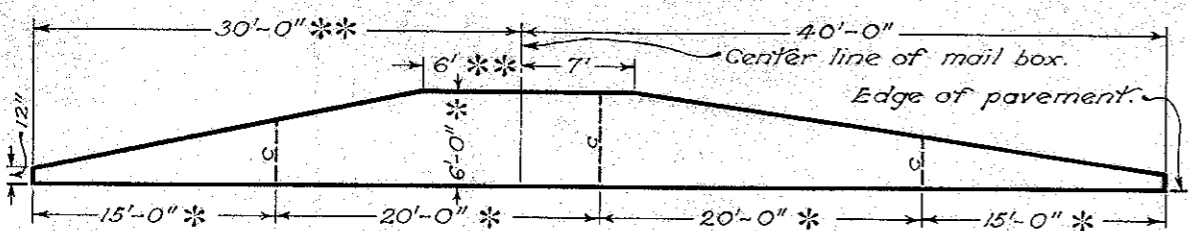
**TYPE 1 DRIVEWAY**



**TYPE 2 DRIVEWAY**



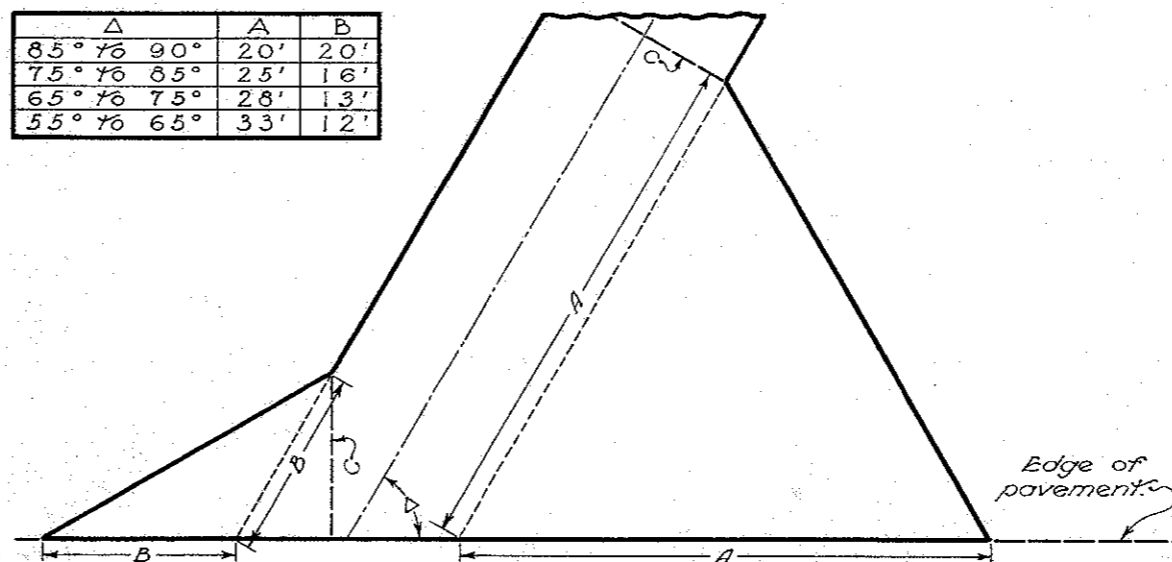
**COMBINED DRIVEWAY & MAIL BOX APPROACH**



\* Unless otherwise shown in plan.  
 \*\* Add 2 feet for each additional mail box.

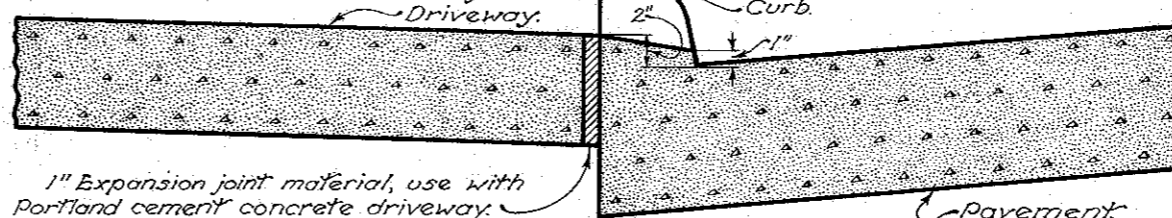
**TYPICAL MAIL BOX APPROACH**

$\Delta$	A	B
85°	20'	20'
75°	25'	16'
65°	28'	13'
55°	33'	12'



**TYPE 2 SKEWED DRIVEWAY**

Transition from standard curb section to drop curb section to be made in 18" distance from driveway.



1" Expansion joint material, use with Portland cement concrete driveway.

**DROP CURB DETAILS AT DRIVEWAYS**

## NOTES

**GENERAL:** The design details shown hereon shall govern the construction of driveways unless otherwise shown in the project plans. Intersecting roads or streets shall be detailed in the project plans.

The pavement type and thickness shall be specified in the project plans.

Driveway and mail box approaches shall be combined when feasible.

**JOINTS:** Impressed joints for portland cement concrete driveways shall be 1/4" minimum width by 3" depth and shall be sealed with Sec. M-10.23 or Sec. M-10.26 material.

In addition to the joints shown hereon, impressed joints without tie bars shall be placed in portland cement concrete driveways at intervals not to exceed twenty feet in the portion of the driveway back of the flare.

BUREAU OF LOCATION AND DESIGN  
 OHIO DEPARTMENT OF HIGHWAYS

## DRIVEWAYS

STANDARD  
 CONSTRUCTION  
 DRAWING

DR-1

APPROVED: K. R. [Signature] ENGR. L. & D.

DATE  
 1-3-55