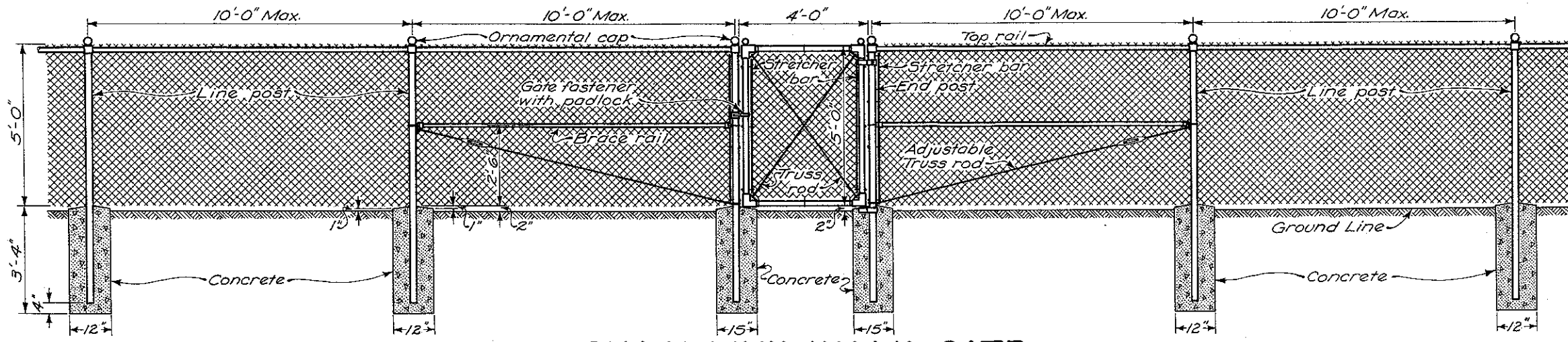
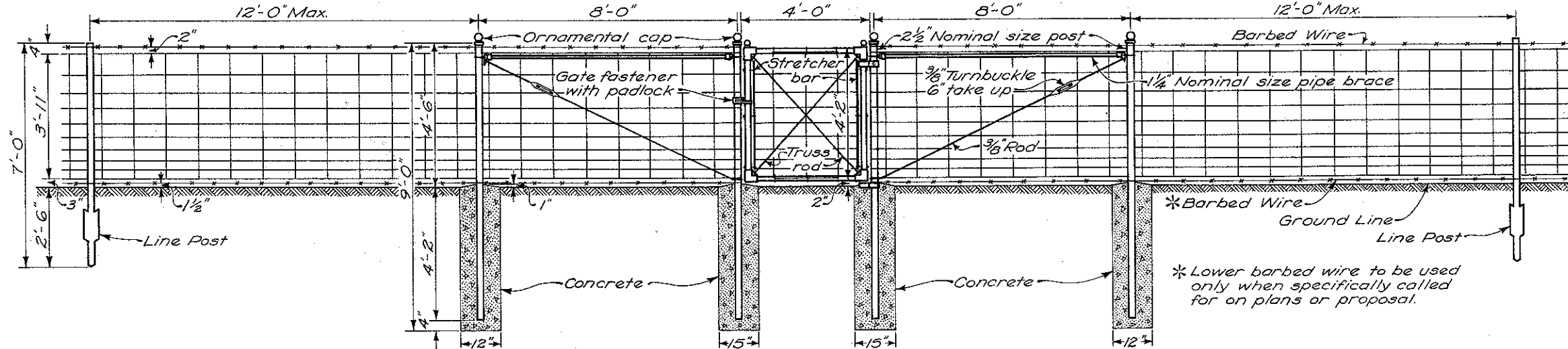


WALK GATES

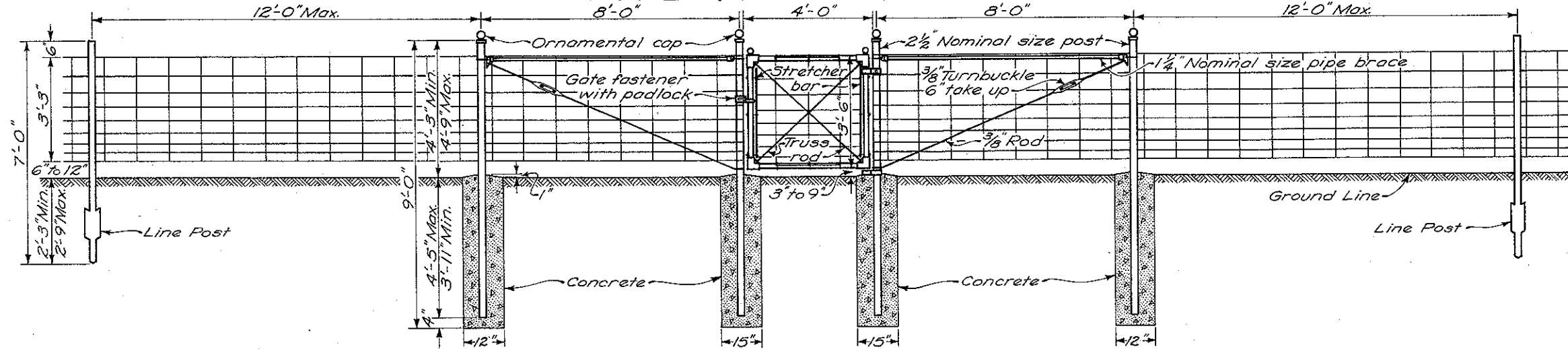
NOTES



CHAIN LINK WALK GATE



TYPE 47 WALK GATE



TYPE 39 WALK GATE

Gates shall be of the size and dimensions and of similar construction to those shown on this drawing and shall be covered with fabric which matches adjoining fence fabric.

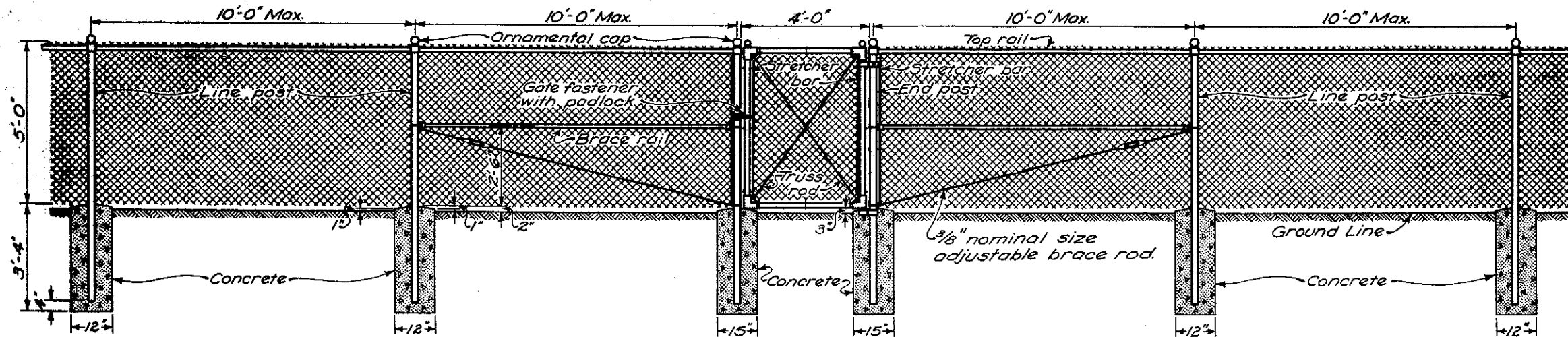
Each gate shall be equipped with an approved padlock with double locking bolt, five-pin tumbler, laminated steel case, brass cylinder, rust-proof. Where companion gates are installed on opposite sides of the highway, tumblers shall be identically set in each lock so that the same key will open each lock. Two keys shall be furnished with each padlock.

Truss rods may be omitted from gate frames if welded joints are furnished.

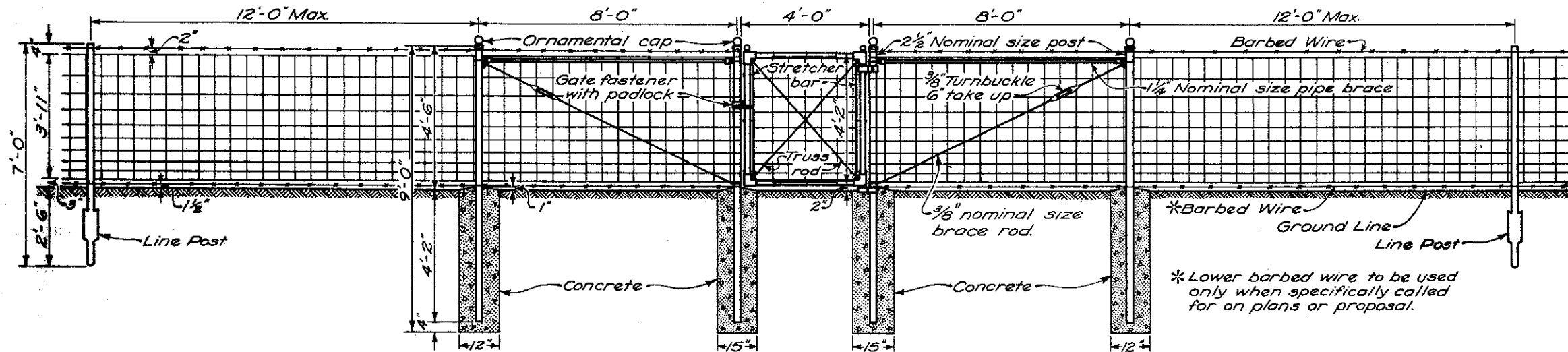
Type 47 and Type 39 Walk Gates and end post assemblies at gate openings shall meet the requirements of Section M-10.39 and Section I-26.13 of the Construction and Material Specifications, except as otherwise shown on this drawing.

BUREAU OF LOCATION AND DESIGN OHIO DEPARTMENT OF HIGHWAYS	
DATE 9-1-64	
WALK GATES	
STANDARD CONSTRUCTION DRAWING	F-4
APPROVED <i>R. J. Ritt</i> ENGR. L. & D.	

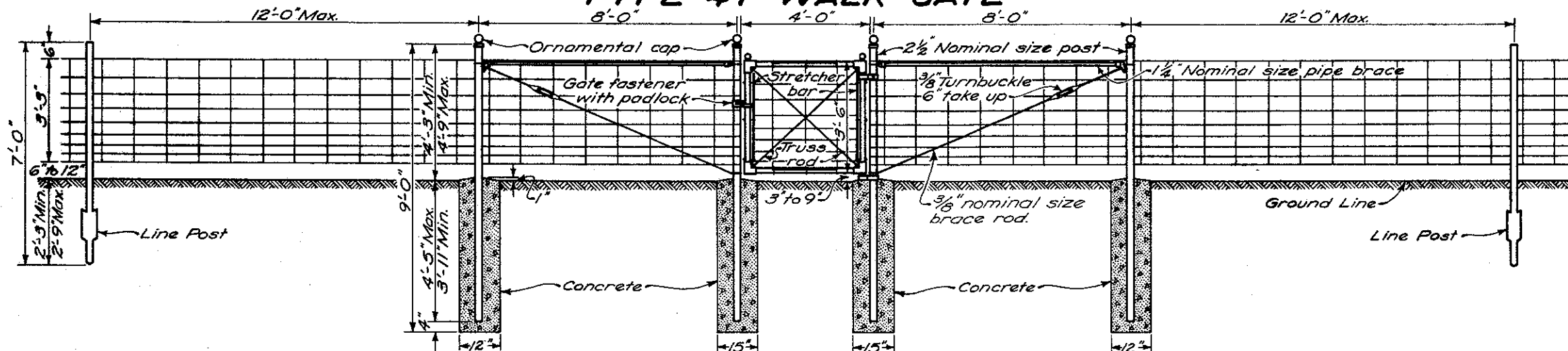
WALK GATES



CHAIN LINK WALK GATE



TYPE 47 WALK GATE



TYPE 39 WALK GATE

NOTES

Gates shall be of the size and dimensions and of similar construction to those shown on this drawing and shall be covered with fabric which matches adjoining fence fabric.

Each gate shall be equipped with an approved padlock with double locking bolt, five-pin tumbler, laminated steel case, brass cylinder, rust-proof. Where companion gates are installed on opposite sides of the highway, tumblers shall be identically set in each lock so that the same key will open each lock. Two keys shall be furnished with each padlock.

Truss rods may be omitted from gate frames if welded joints are furnished.

Type 47 and Type 39 Walk Gates and end post assemblies at gate openings shall conform to 607, except as otherwise shown on this drawing.

BUREAU OF LOCATION AND DESIGN
OHIO DEPARTMENT OF HIGHWAYS

WALK GATES

STANDARD
CONSTRUCTION
DRAWING

F-4

APPROVED *R. P. [Signature]* ENGR. L. & D.

DATE
9-1-64
6-1-65

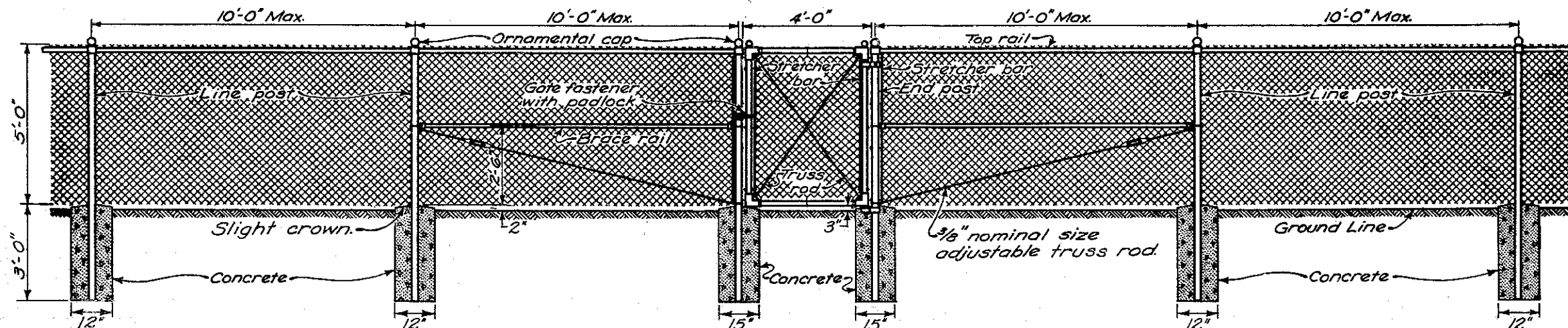
NOTES

GATES shall be of the size and dimensions and of similar construction to those shown on this drawing and shall be covered with fabric which matches adjoining fence fabric.

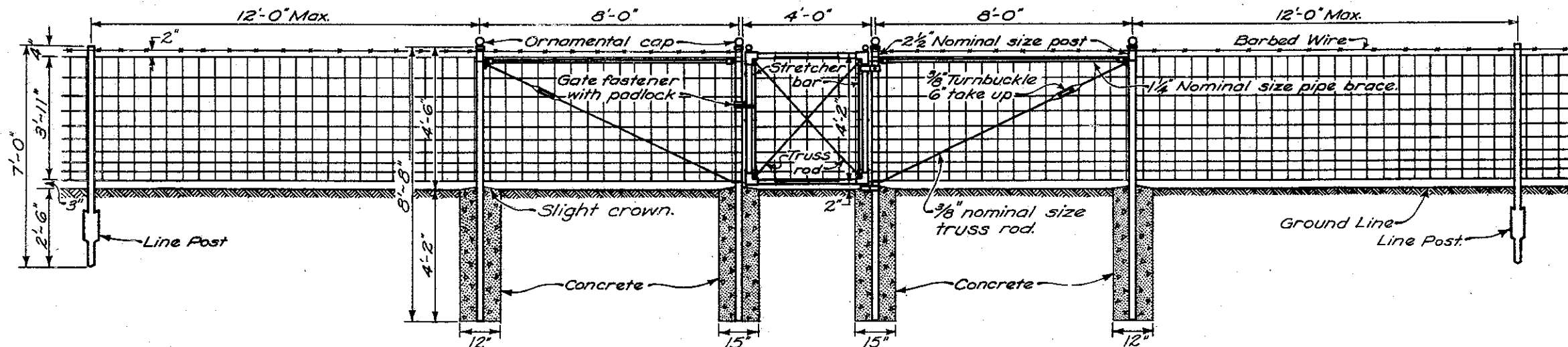
Each gate shall be equipped with an approved padlock with double locking bolt, five-pin tumbler, laminated steel case, brass cylinder, rust-proof. Where companion gates are installed on opposite sides of the highway, tumblers shall be identically set in each lock so that the same key will open each lock. Two keys shall be furnished with each padlock.

TRUSS RODS may be omitted from gate frames if welded joints are furnished.

TYPE 47 walk gate and end post assemblies at gate openings shall conform to 607, except as otherwise shown on this drawing.



CHAIN LINK WALK GATE



TYPE 47 WALK GATE

BUREAU OF ROADWAY DESIGN OHIO DEPARTMENT OF TRANSPORTATION	
WALK GATES	
DATE 9-1-64 6-1-65 5-1-76	STANDARD CONSTRUCTION DRAWING APPROVED <i>E. J. Schaefer</i> ENGR., R.D.
F-4	

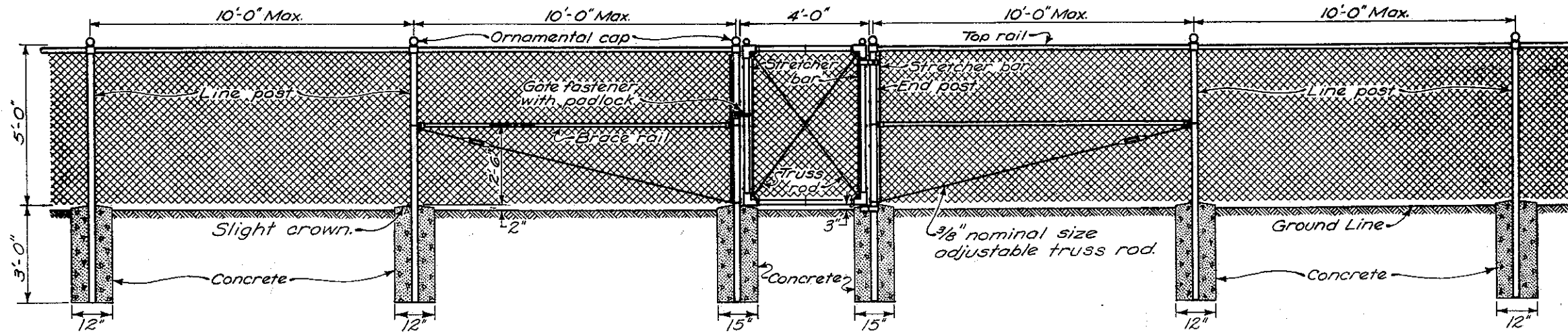
NOTES

GATES shall be of the size and dimensions and of similar construction to those shown on this drawing and shall be covered with fabric which matches adjoining fence fabric.

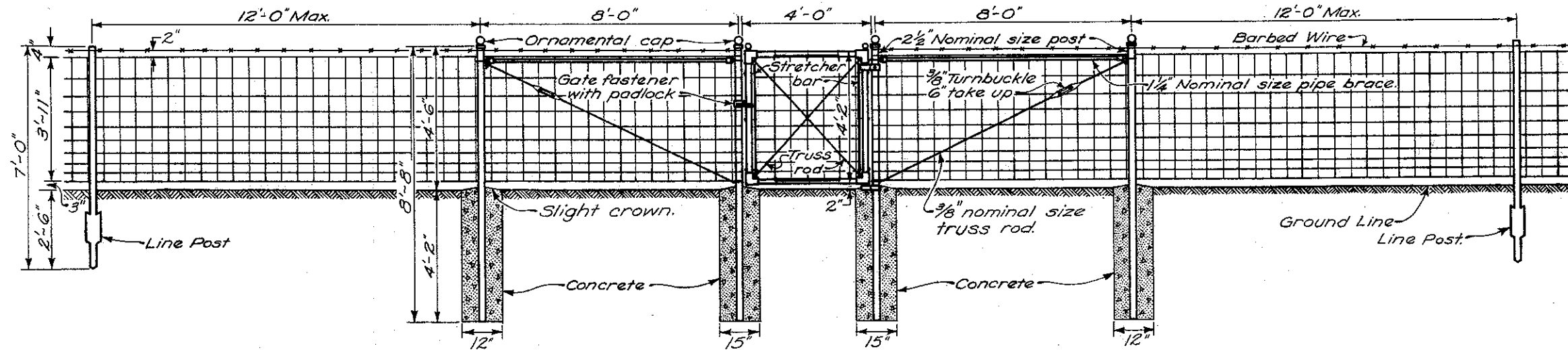
Each gate shall be equipped with an approved padlock with double locking bolt, five-pin tumbler, laminated steel case, brass cylinder, rust-proof. Where companion gates are installed on opposite sides of the highway, tumblers shall be identically set in each lock so that the same key will open each lock. Two keys shall be furnished with each padlock.

TRUSS RODS may be omitted from gate frames if welded joints are furnished.

TYPE 47 walk gate and end post assemblies at gate openings shall conform to 607, except as otherwise shown on this drawing.



CHAIN LINK WALK GATE



TYPE 47 WALK GATE

BUREAU OF LOCATION AND DESIGN OHIO DEPARTMENT OF TRANSPORTATION	
WALK GATES	
DATE 9-1-64 6-1-65 5-1-76 11-10-83	
STANDARD CONSTRUCTION DRAWING	F-4
APPROVED <i>[Signature]</i>	ENGR., L.F.D.