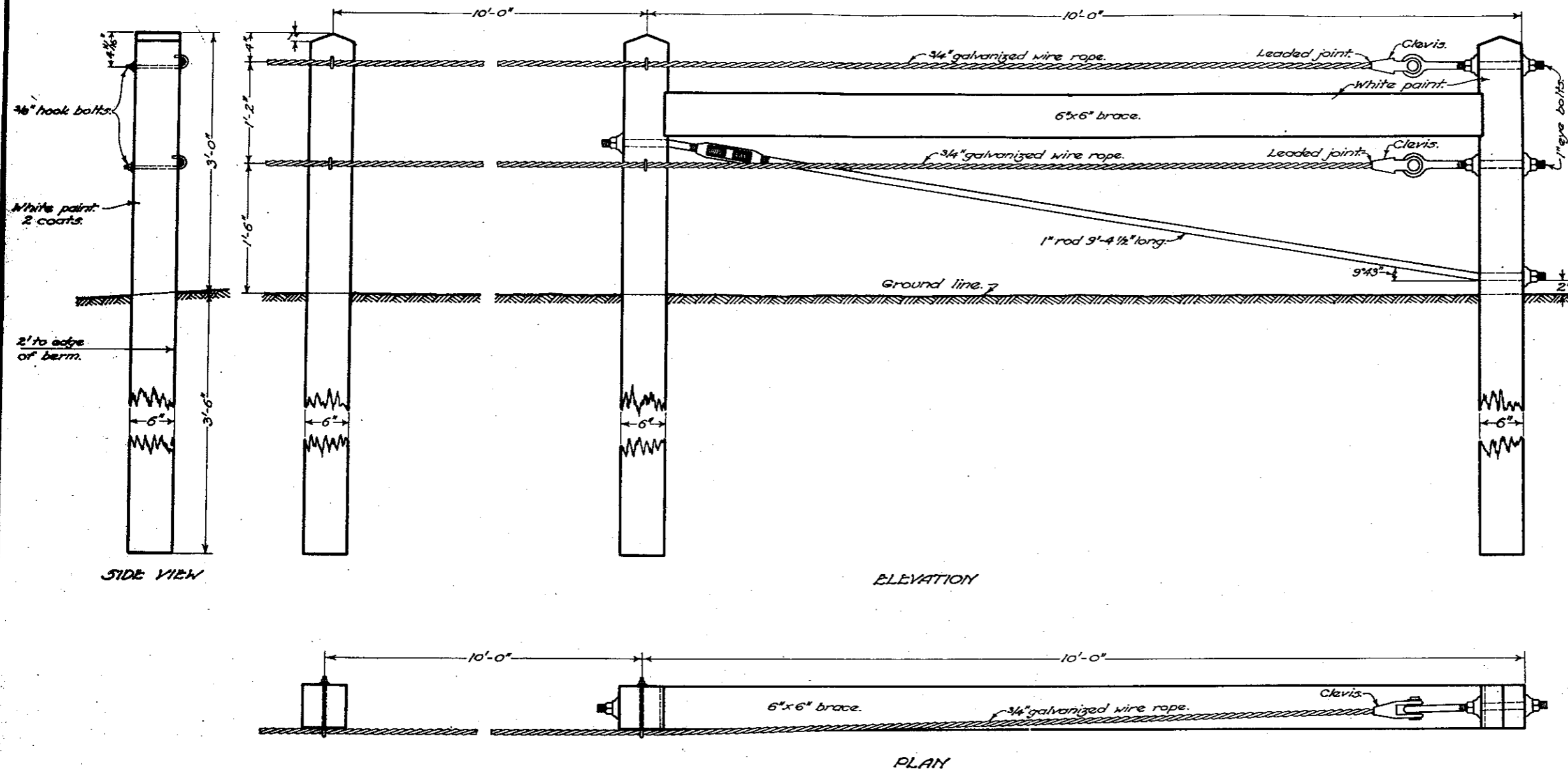


# STANDARD TYPE C-C GUARD RAIL

## NOTES

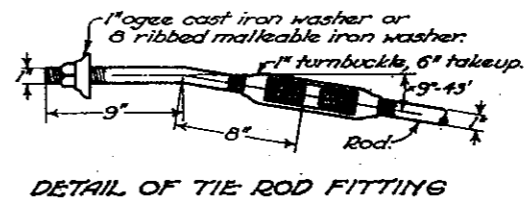
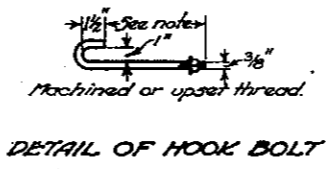
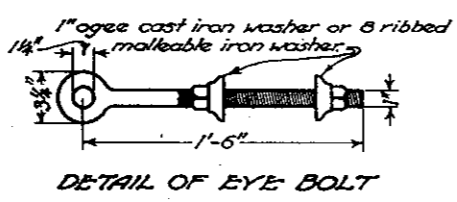
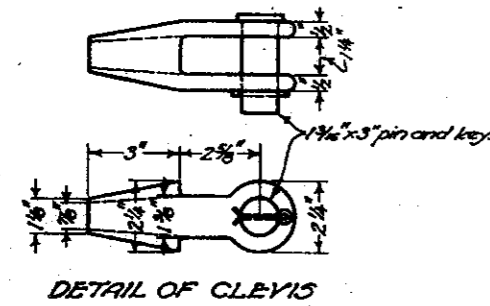


**POSTS:**  
 Round posts shall be 6" minimum diameter and 9" maximum bottom diameter except white cedar which shall be 6 3/4" minimum diameter.  
 Square posts shall be full 6"x6" and of white oak or chestnut.  
 Bolt holes shall be bored and tops of posts trimmed after the posts are set.

**CABLE:**  
 Cable may be 3/4" wire rope or 21 strand woven wire tape conforming to the requirements of the Material Details.  
 Splicing of cable will not be permitted.

**GALVANIZED FITTINGS:**  
 Clevis or wedge connections, eye bolts, hook bolts and turnbuckles to be galvanized to conform with the requirements of the Material Details.  
 Length of hook bolts to be determined by size of posts.  
 A wedge connection may be used instead of the clevis if approved by the engineer.  
 If woven wire tape is used modified hook bolts shall be provided.

**PAINTING:**  
 All exposed surfaces, not galvanized, to have 2 coats of white lead and linseed oil paint. All surfaces in contact, not galvanized, shall receive one coat of the above paint before erection.  
 All bolts that pass thru posts shall be dipped in paint on using.



BUREAU OF CONSTRUCTION  
 OHIO  
 DEPARTMENT OF HIGHWAYS

**GUARD RAIL**

STANDARD CONSTRUCTION DRAWING H5 C-C

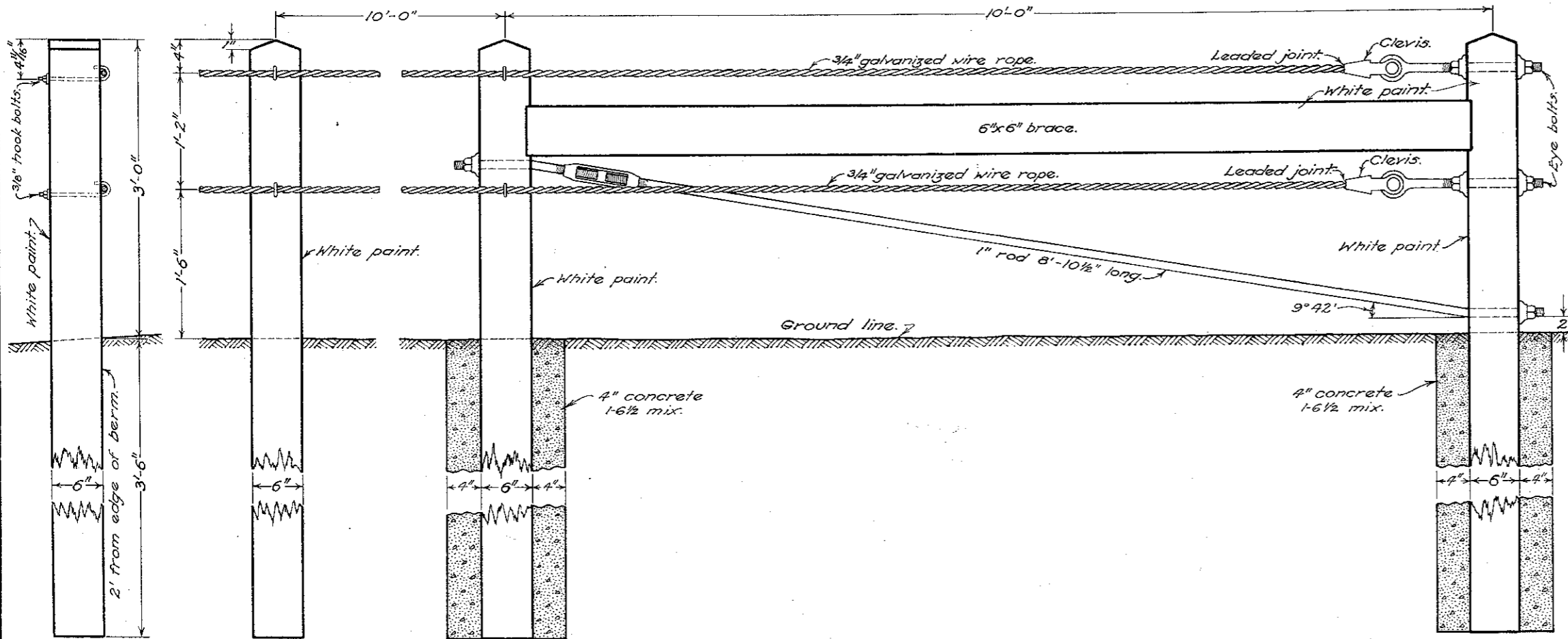
APPROVED *E. J. [Signature]* CHIEF ENGR. CONST.

NOV. 1933



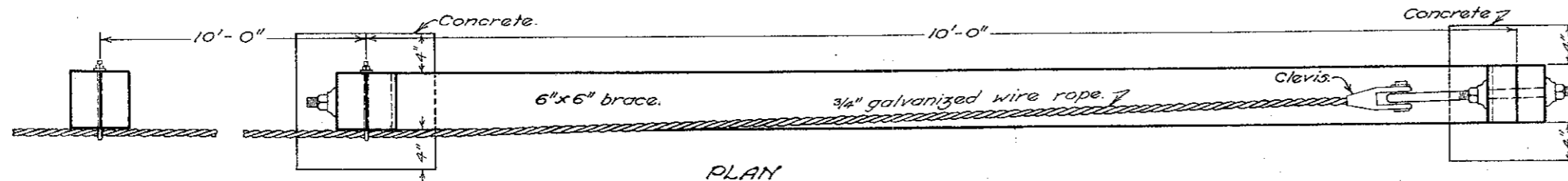
# STANDARD TYPE C-C GUARD RAIL

## NOTES

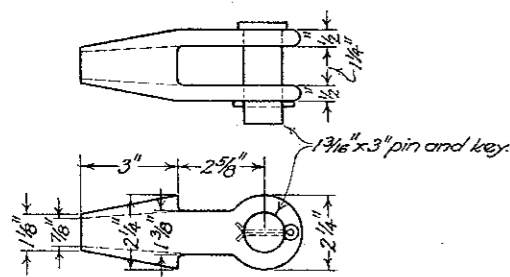


SIDE VIEW

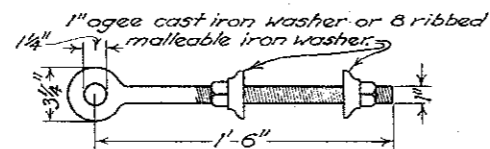
ELEVATION



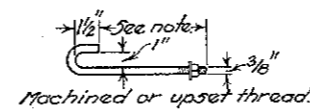
PLAN



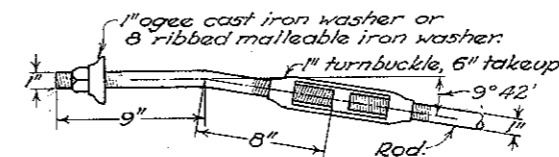
DETAIL OF CLEVIS



DETAIL OF EYE BOLT



DETAIL OF HOOK BOLT



DETAIL OF TIE ROD FITTING

**POSTS**:- Round posts shall be from 6" minimum to 8" maximum top diameter and from 8" minimum to 10" maximum bottom diameter.  
 Square posts shall be full 6"x 6" and of white oak or chestnut.  
 Posts shall conform to the requirements of the Material Details.  
 Bolt holes shall be bored and tops of posts trimmed after the posts are set.  
 The last two posts at each end of the section shall be set in concrete of 1-6 1/2 mix.  
**CABLES** may be 3/4" wire rope or 21 strand woven wire tape conforming to the requirements of the Material Details.  
 Splicing of cable will not be permitted.  
**FITTINGS**:- Clevis or wedge connections, eye bolts, hook bolts, nuts, turnbuckles and washers, except those of cast iron, to be galvanized or cadmium plated to conform with the requirements of the Material Details.  
 Length of hook bolts to be determined by size of posts.  
 A wedge connection may be used instead of the clevis if approved by the engineer.  
 If woven wire tape is used modified hook bolts shall be provided.  
**PAINTING**:- All exposed surfaces not galvanized or cadmium plated shall be given one prime coat of white paint and two coats of white lead and linseed oil paint. All surfaces in contact not galvanized or cadmium plated shall be painted one coat of white lead and linseed oil paint before being assembled. All paint shall conform to the requirements of the Material Details.  
 All bolts that pass thru posts shall be dipped in white paint on using.

BUREAU OF LOCATION & DESIGN  
 OHIO  
 DEPARTMENT OF HIGHWAYS

## GUARD RAIL

STANDARD  
 CONSTRUCTION I-15 C-C  
 DRAWING

APPROVED: *K.L.R.* CHIEF ENGINEER

NOV. 1933  
 7-3-'35  
 1-1-'36