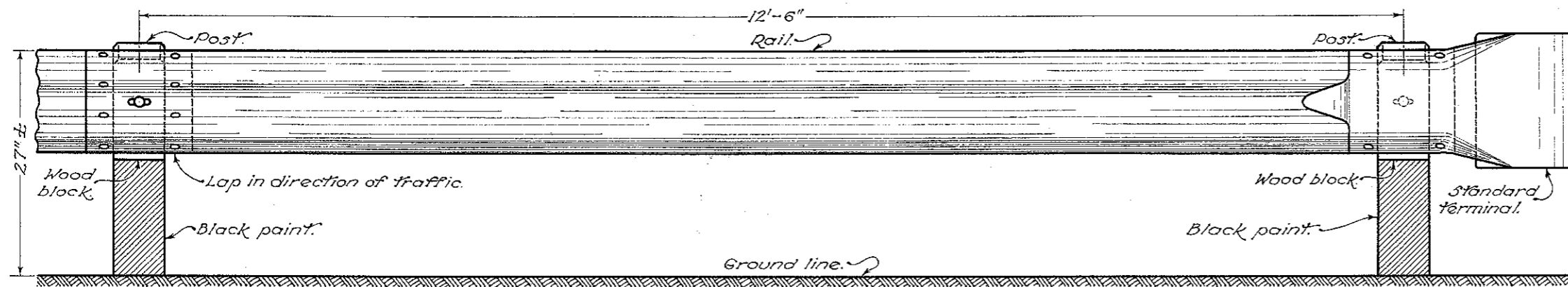
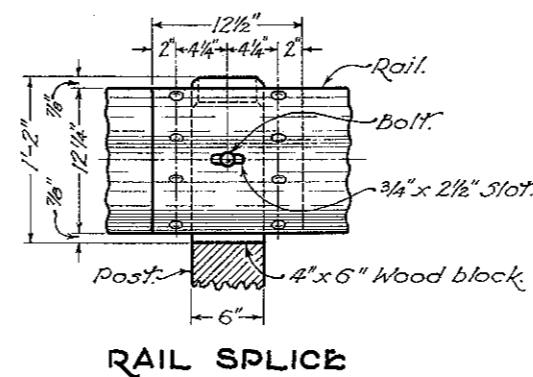
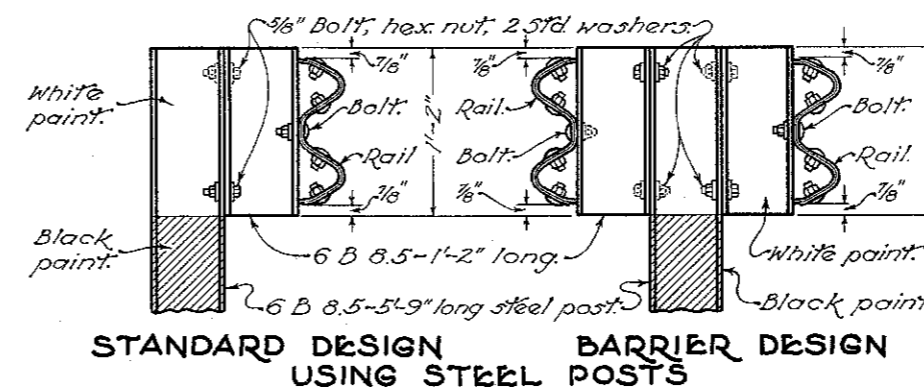
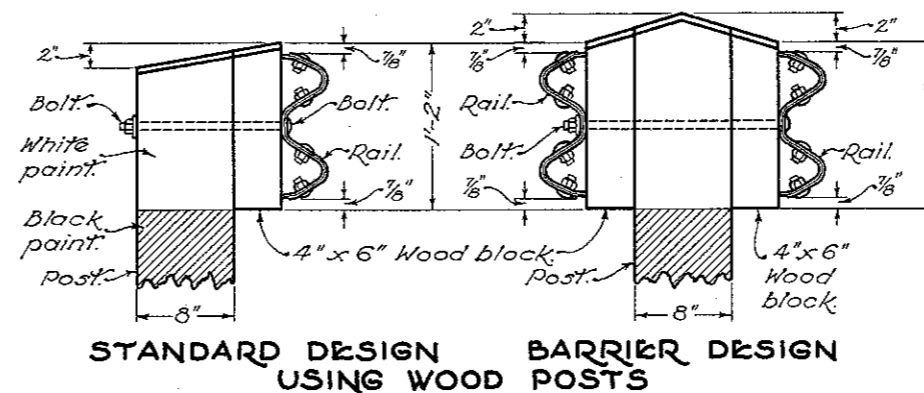
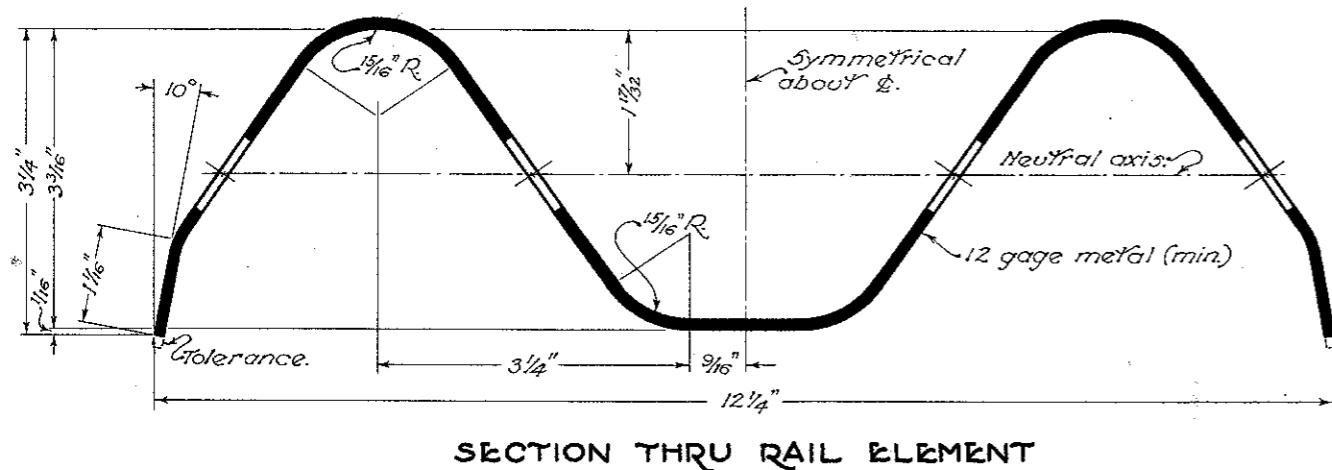
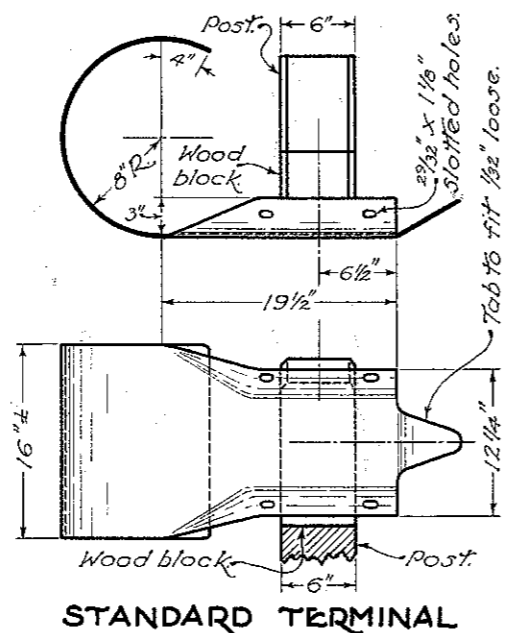
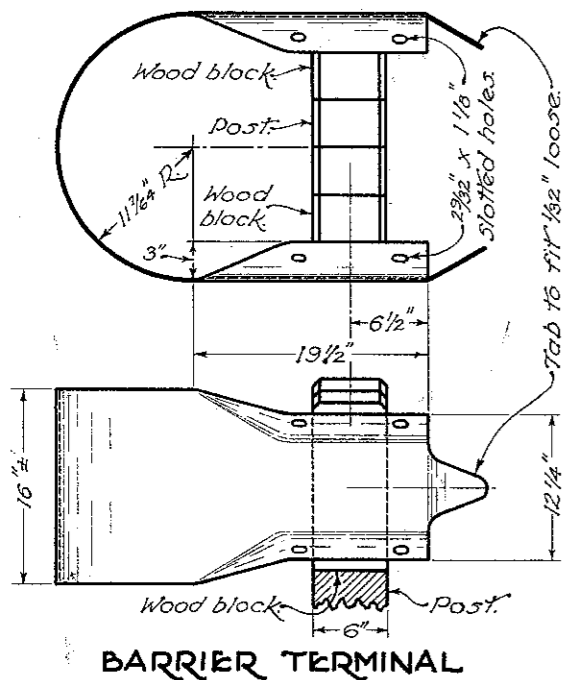


# STEEL BEAM DEEP GUARD RAIL



ELEVATION



NOTES

GENERAL:—The details shown hereon shall apply when steel beam deep guard rail is specified.

Standard design shall be used unless otherwise specified.

Barrier design shall be used when this type is specifically required by the plan or proposal.

When steel beam deep guard rail is used as bridge railing, the 6'-3" spacing between posts shall be used for a distance of 12'-6" beyond each end of the bridge.

BOLTS:—Bolts for rail splice and for fastening rail to posts to be 3/8" diameter with button head, oval shoulder and hexagon nuts.

POSTS:—Shall be either wood or steel except that the same type of post shall be used throughout the length of a project unless otherwise permitted by the Engineer. For details not shown hereon, see Standard Drawing I-15 No. 1.

Wood posts shall be 6"x6" square sawed, creosote butt treated or pentachlorophenol pressure treated.

Steel posts shall be 6 B x 8 1/2 pounds. Steel blocks shall be used with steel posts and shall be fastened to the posts by at least one 5/8" bolt on each side of the block.

TERMINALS:—Details shown are for use with wood posts. If steel posts are used the curvature of the terminal shall be modified to fit the steel post. Terminals shall be made from 12 gage minimum thickness steel.

BUREAU OF LOCATION AND DESIGN  
OHIO DEPARTMENT OF HIGHWAYS

GUARD RAIL

DATE 6-1-37

STANDARD CONSTRUCTION DRAWING I-15 No. 2-B  
APPROVED [Signature] ENGR. L. & D.