

STANDARD TYPE P-C GUARD RAIL

NOTES

POSTS:—

Round posts to be treated as per Specifications and shall be 6" minimum diameter and 9" maximum bottom diameter except white cedar, which shall be 6 3/4" minimum diameter.

Dapping will not be permitted except for end bracing.

Square posts shall be full 6"x 6" and of white oak or chestnut.

Bolt holes shall be bored and tops of posts trimmed after posts are set.

The last two posts at each end of the section shall be set in concrete of 1:6 1/2 mix.

CABLE:—

Cable may be 3/4" wire rope or 21 strand woven wire tape conforming to the requirements of the Material Details.

Splicing of cable will not be permitted.

GALVANIZED FITTINGS:—

Clevis or wedge connections, carriage bolts, eye bolts, hook bolts, nuts, turnbuckles, and washers, except those of cast iron, to be galvanized to conform with the requirements of the Material Details.

Length of hook bolts and carriage bolts to be determined by size of posts.

If woven wire tape is used, modified hook bolts shall be provided.

A wedge connection may be used instead of the clevis if approved by the engineer.

PLANK RAIL AND BRACES:—

Plank rail and braces shall be surfaced four sides and commercial sizes will govern.

Plank rail shall break at alternate posts.

PAINTING:—

All exposed surfaces, not galvanized shall be given three coats of white lead and linseed oil paint. All surfaces in contact, not galvanized, shall receive one coat of the above paint before erection. Wood posts shall be painted from the ground line to the edge of rail with three coats of black paint conforming to the requirements of the Specifications.

All bolts that pass thru posts shall be dipped in paint on using.

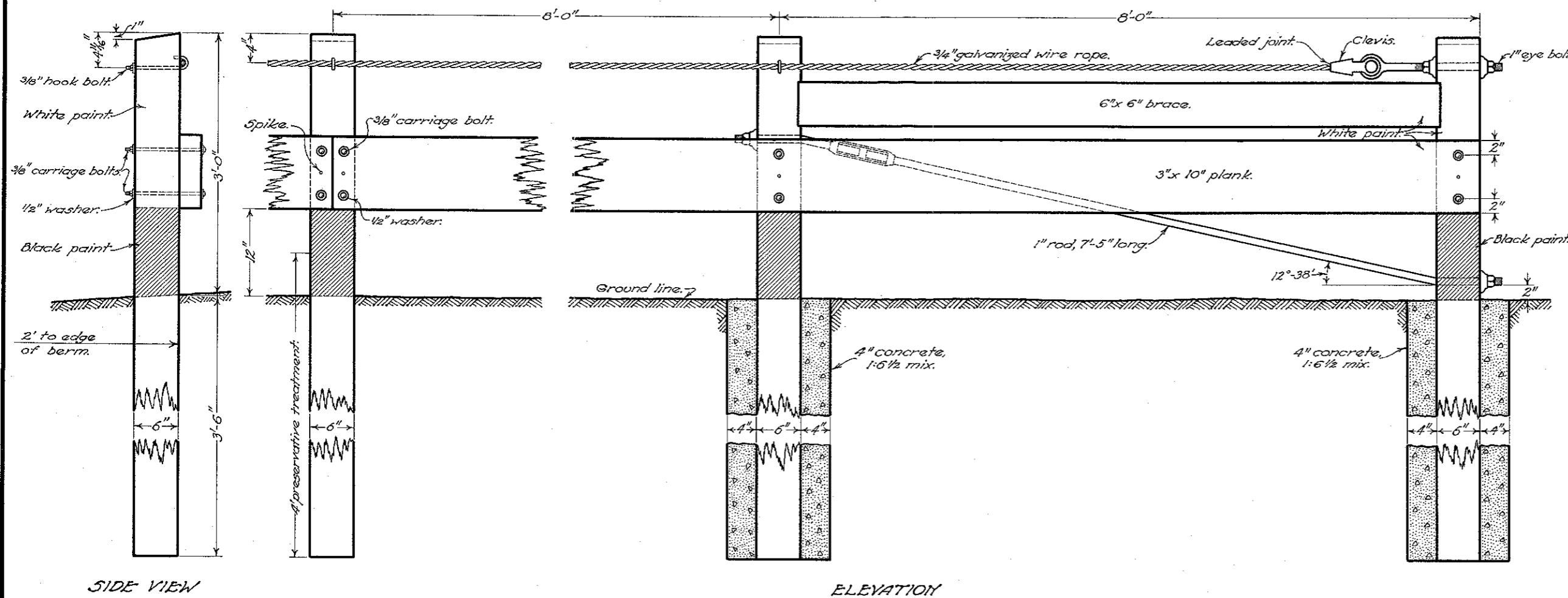
BUREAU OF CONSTRUCTION
OHIO
DEPARTMENT OF HIGHWAYS

GUARD RAIL

STANDARD
CONSTRUCTION I-15 P-C
DRAWING

APPROVED: *E. H.* CHIEF ENGR. CONST.

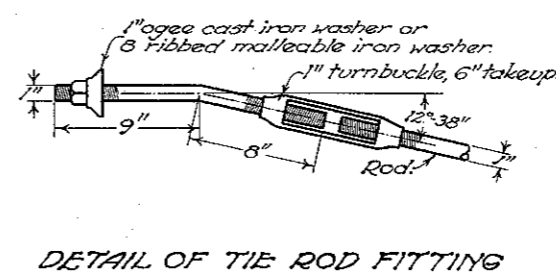
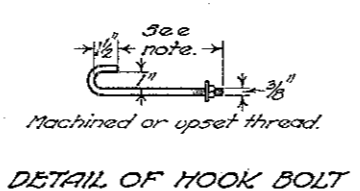
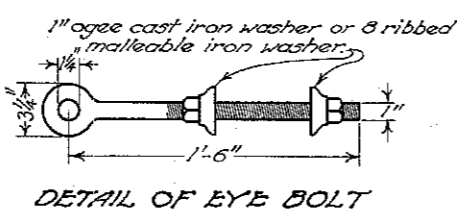
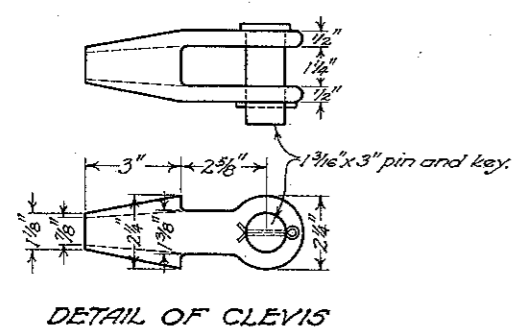
NOV. 1933



SIDE VIEW

ELEVATION

PLAN



STANDARD TYPE P-C GUARD RAIL

NOTES

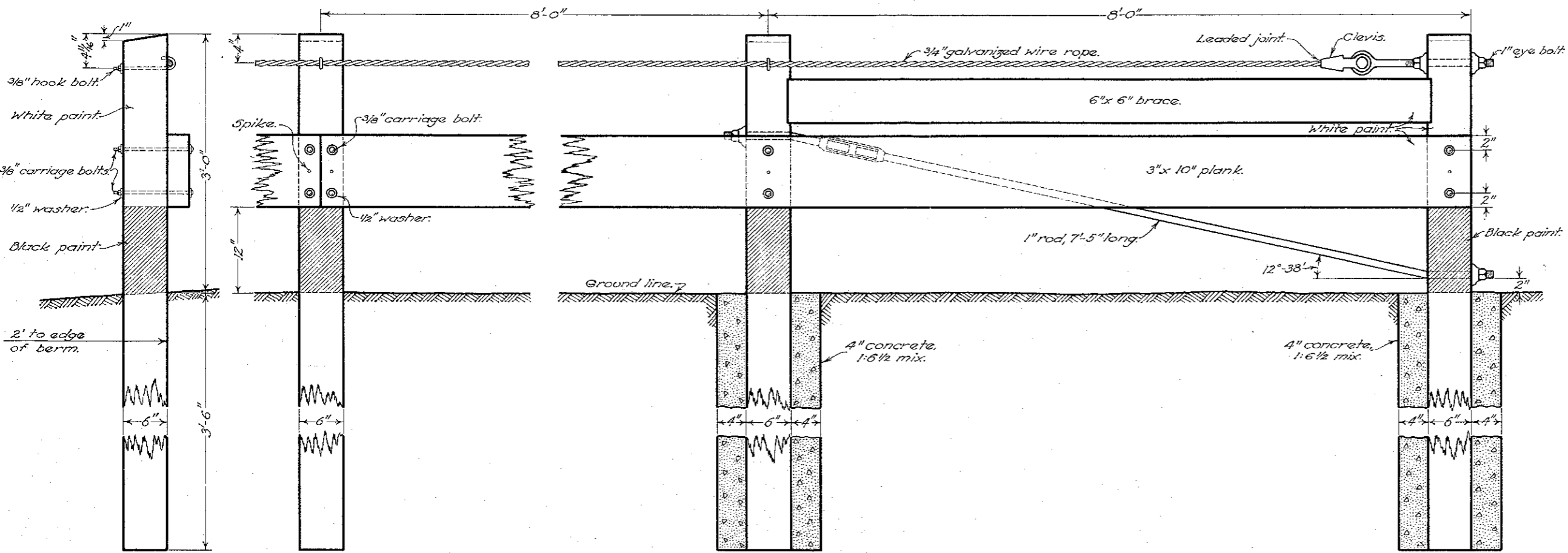
POSTS:
 Dapping will not be permitted except for end bracing.
 Square posts shall be full 6" x 6" and of white oak or chestnut.
 Bolt holes shall be bored and tops of posts trimmed after posts are set.
 The last two posts at each end of the section shall be set in concrete of 1:6 1/2 mix.

CABLE:
 Cable may be 3/4" wire rope or 21 strand woven wire tape conforming to the requirements of the Material Details.
 Splicing of cable will not be permitted.

GALVANIZED FITTINGS:
 Clevis or wedge connections, carriage bolts, eye bolts, hook bolts, nuts, turnbuckles, and washers, except those of cast iron, to be galvanized to conform with the requirements of the Material Details.
 If woven wire tape is used, modified hook bolts shall be provided.
 A wedge connection may be used instead of the clevis if approved by the engineer.

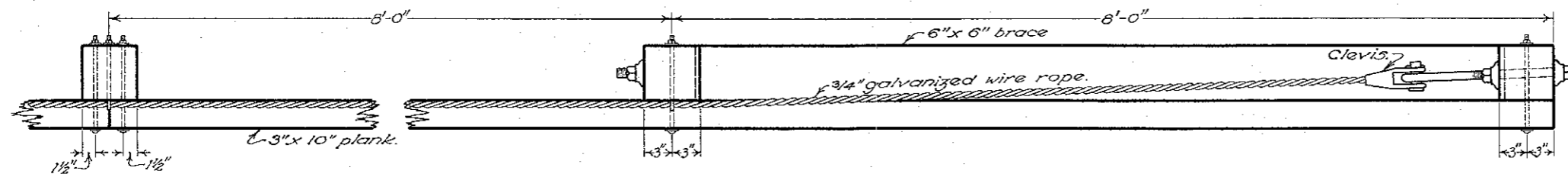
PLANK RAIL AND BRACES:
 Plank rail and braces shall be surfaced four sides and commercial sizes will govern.
 Plank rail shall break at alternate posts.

PAINTING:
 All exposed surfaces, not galvanized shall be given three coats of white lead and linseed oil paint. All surfaces in contact, not galvanized, shall receive one coat of the above paint before erection. Wood posts shall be painted from the ground line to the edge of rail with three coats of black paint conforming to the requirements of the Specifications.
 All bolts that pass thru posts shall be dipped in paint on using.

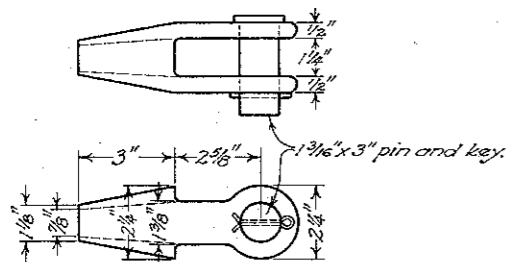


SIDE VIEW

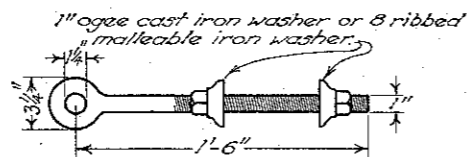
ELEVATION



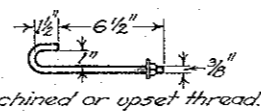
PLAN



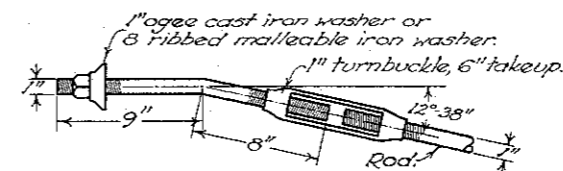
DETAIL OF CLEVIS



DETAIL OF EYE BOLT



DETAIL OF HOOK BOLT



DETAIL OF TIE ROD FITTING

BUREAU OF LOCATION & DESIGN
 OHIO DEPARTMENT OF HIGHWAYS

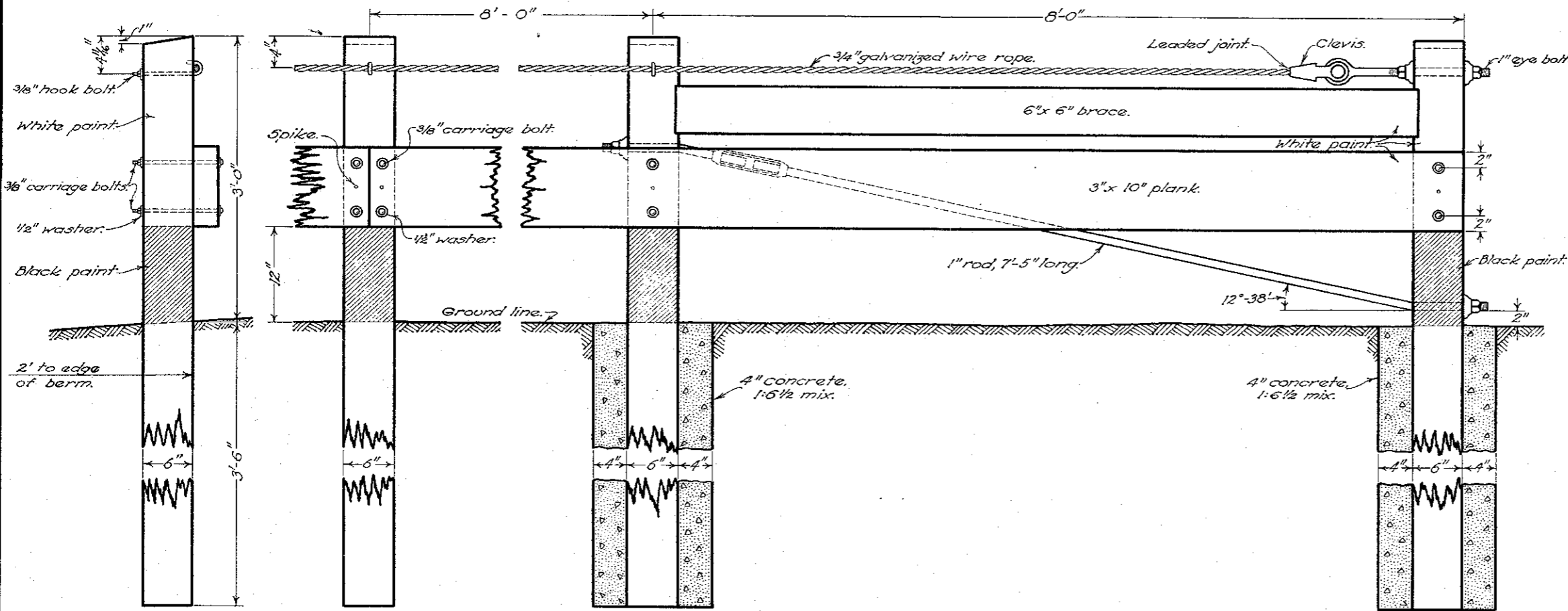
6-1-35

GUARD RAIL

STANDARD CONSTRUCTION I-15 P-C
 DRAWING
 APPROVED *K.L.R.* CHIEF ENGINEER

STANDARD TYPE P-C GUARD RAIL

NOTES



POSTS:—Square posts shall be full 6"x6" and of white oak or chestnut conforming to the requirements of the Material Details. Dapping will not be permitted except for braces. Bolt holes shall be bored and tops of posts trimmed after posts are set. The last two posts at each end of the section shall be set in concrete of 1-6 1/2 mix.

CABLE may be 3/4" wire rope or 21 strand woven wire tape conforming to the requirements of the Material Details. Splicing of cable will not be permitted.

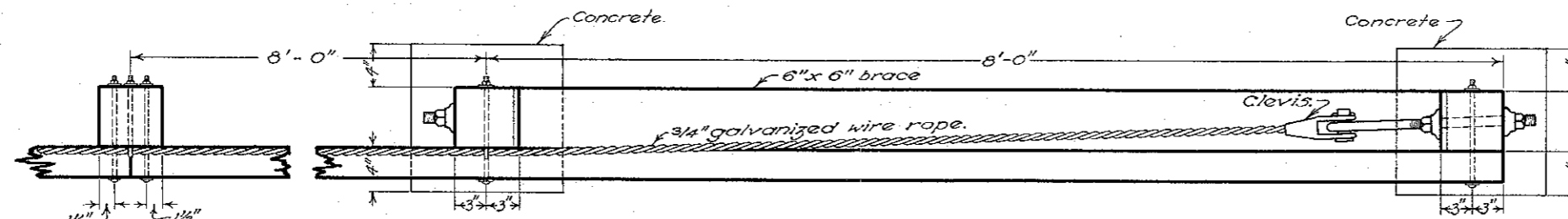
FITTINGS:—Clevis or wedge connections, eye bolts, carriage bolts, hook bolts, nuts, turnbuckles and washers, except those of cast iron, to be galvanized or cadmium plated to conform with the requirements of the Material Details. If woven wire tape is used, modified hook bolts shall be provided. A wedge connection may be used instead of the clevis if approved by the engineer.

PLANK RAIL AND BRACES shall be surfaced four sides and commercial sizes will govern. Plank rail shall break at alternate posts.

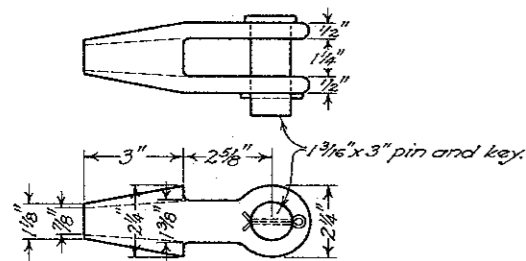
PAINTING:—All exposed surfaces not galvanized or cadmium plated shall be given one prime coat of white paint and two coats of white lead and linseed oil paint. All surfaces in contact not galvanized or cadmium plated shall be painted one coat of white lead and linseed oil paint before being assembled. Wood posts shall be painted from the ground line to the edge of rail with three coats of black paint. All paint shall conform to the requirements of the Material Details. All bolts that pass thru posts shall be dipped in white paint on using.

SIDE VIEW

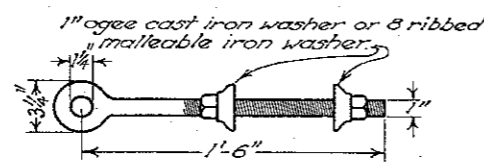
ELEVATION



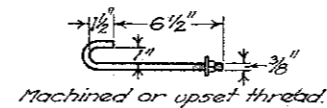
PLAN



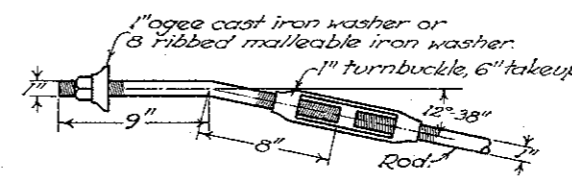
DETAIL OF CLEVIS



DETAIL OF EYE BOLT



DETAIL OF HOOK BOLT



DETAIL OF TIE ROD FITTING

BUREAU OF LOCATION & DESIGN 6-1-35
OHIO DEPARTMENT OF HIGHWAYS 1-1-36

GUARD RAIL

STANDARD CONSTRUCTION I-15 P-C DRAWING

APPROVED *K. L. R.* CHIEF ENGINEER