

STANDARD TYPE P-P GUARD RAIL

NOTES

GENERAL:—

All wooden material used in this type of Guard Rail shall be of untreated native timber of the shapes and dimensions shown herewith, and to comply with the Specifications for untreated timber.

POSTS:—

Posts may be square sawed white oak or chestnut, full 6" x 6" according to Section M-8.7; or round wood posts of either chestnut, white oak or locust complying with the Specifications, Section M-8.5.

Bolt holes shall be bored and tops of posts trimmed after the posts are set. All bark to be removed from posts before being set. Posts not to be notched for the placing of rails.

RAILS:—

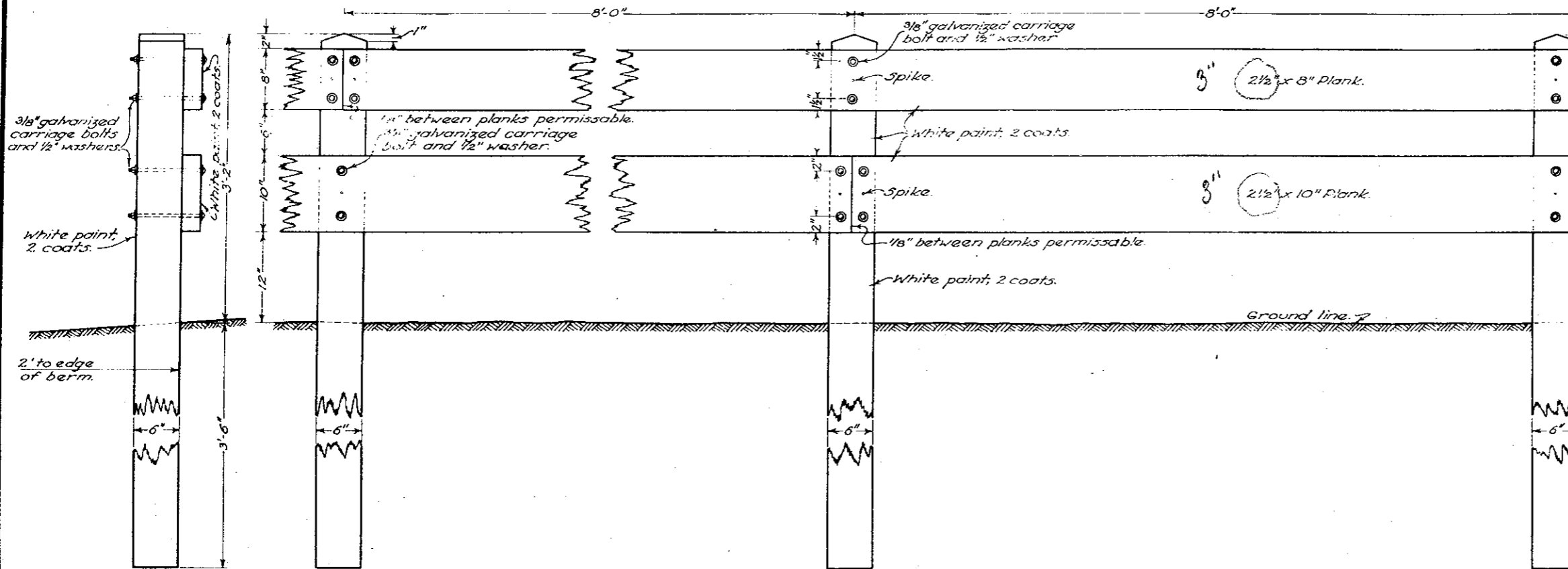
Rail joints shall be made at alternate posts.

BOLTS:—

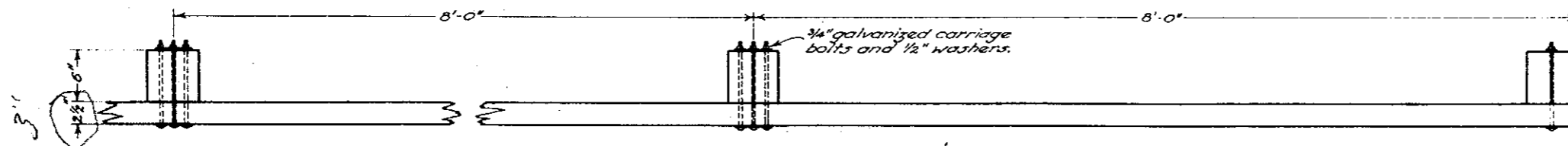
Carriage bolts and washers shall be galvanized. The length of the carriage bolts shall be determined by the size of posts.

PAINTING:—

Railing and posts to be painted with two coats of white paint.



ELEVATION



PLAN

BUREAU OF CONSTRUCTION OHIO DEPARTMENT OF HIGHWAYS		OCT. 1933
GUARD RAIL		
STANDARD CONSTRUCTION DRAWING		I-15 P-P
APPROVED: <i>E. J. [Signature]</i> CHIEF ENGR. CONST.		

STANDARD TYPE P-P GUARD RAIL

NOTES

GENERAL: ✓

All wooden material used in this type of Guard Rail shall be of untreated native timber of the shapes and dimensions shown herewith, and to comply with the Specifications for untreated timber.

POSTS: ✓

Posts may be square sawed white oak or chestnut, full 6" x 6" according to Section M-8.7; or round wood posts of either chestnut, white oak or locust complying with the Specifications, Section M-8.5.

Bolt holes shall be bored and tops of posts trimmed after the posts are set. All bark to be removed from posts before being set. Posts not to be notched for the placing of rails.

RAILS: ✓

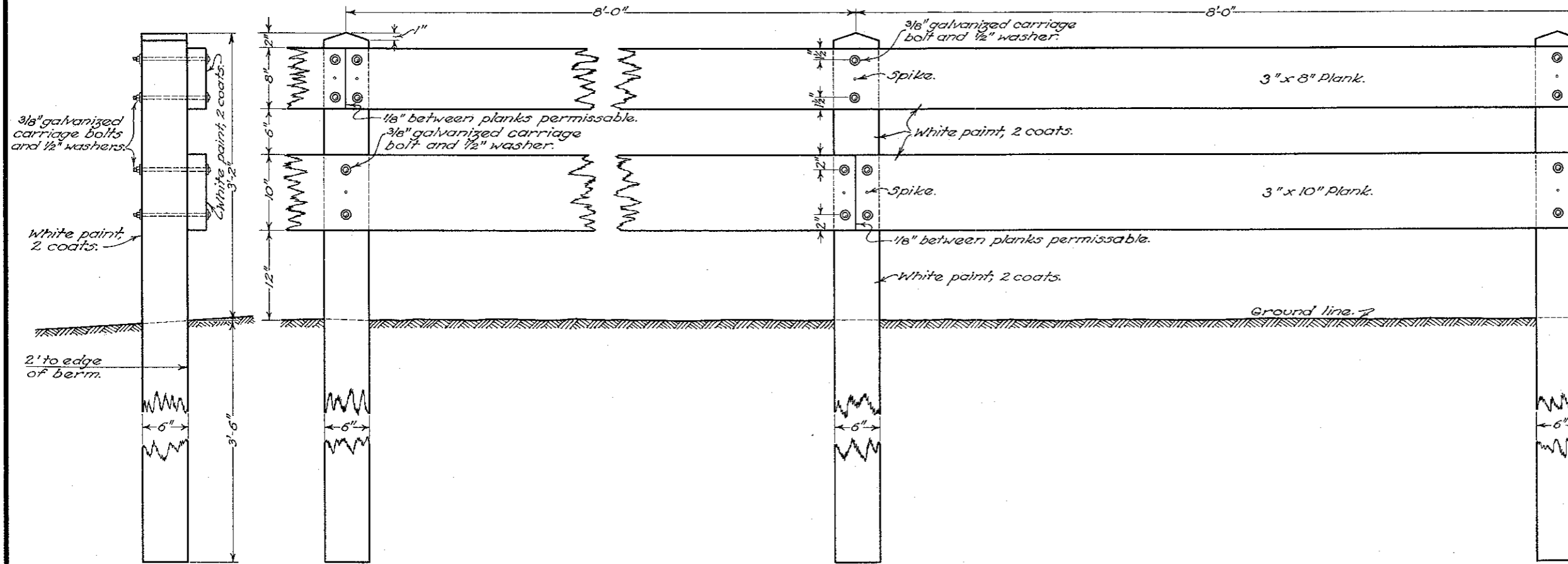
Rail joints shall be made at alternate posts.

BOLTS: ✓

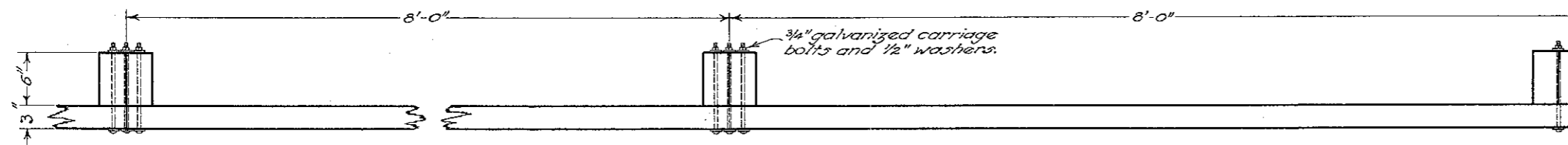
Carriage bolts and washers shall be galvanized. The length of the carriage bolts shall be determined by the size of posts.

PAINTING: ✓

Railing and posts to be painted with two coats of white paint.



ELEVATION



PLAN

BUREAU OF LOCATION & DESIGN OHIO DEPARTMENT OF HIGHWAYS	OCT. 1933 APR. 1934 6-13-35
GUARD RAIL	
STANDARD CONSTRUCTION DRAWING	I-15 P-P
APPROVED: <i>N.L.R.</i> CHIEF ENGINEER	

STANDARD TYPE P-P GUARD RAIL

NOTES

GENERAL:~

All wooden material used in this type of Guard Rail shall be of untreated native timber of the shapes and dimensions shown herewith, and to comply with the Specifications for untreated timber.

POSTS:~

Posts may be square sawed white oak or chestnut, full 6"x 6" according to Section M-8.7; or round wood posts complying with the Specifications, Section M-8.5.

Bolt holes shall be bored and tops of posts trimmed after the posts are set. All bark to be removed from posts before being set. Posts not to be notched for the placing of rails.

RAILS:~

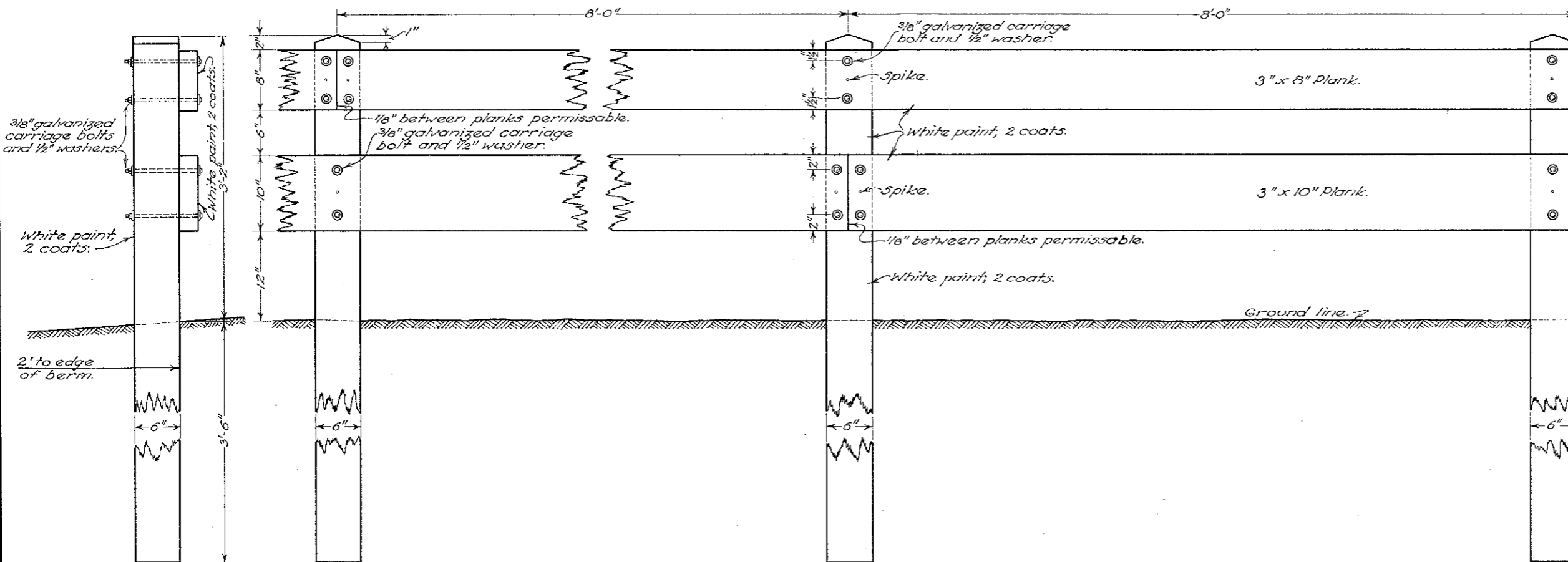
Rail joints shall be made at alternate posts.

BOLTS:~

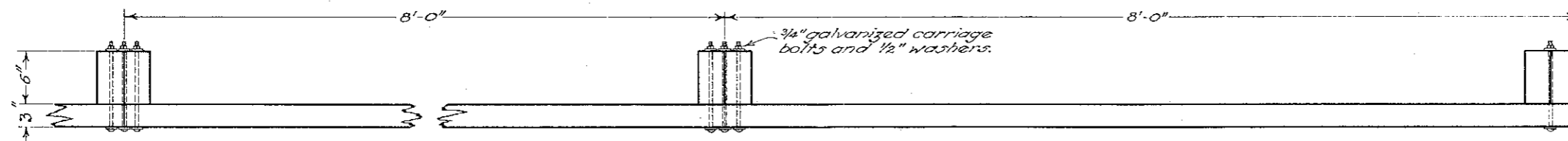
Carriage bolts and washers shall be galvanized. The length of the carriage bolts shall be determined by the size of posts.

PAINTING:~

Railing and posts to be painted with two coats of white paint.



ELEVATION

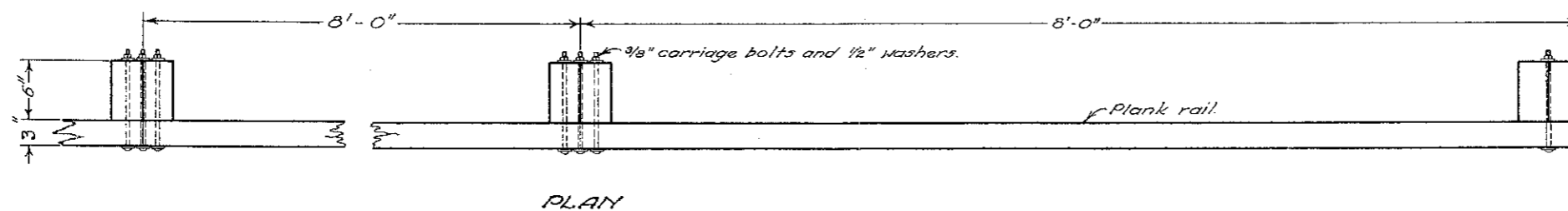
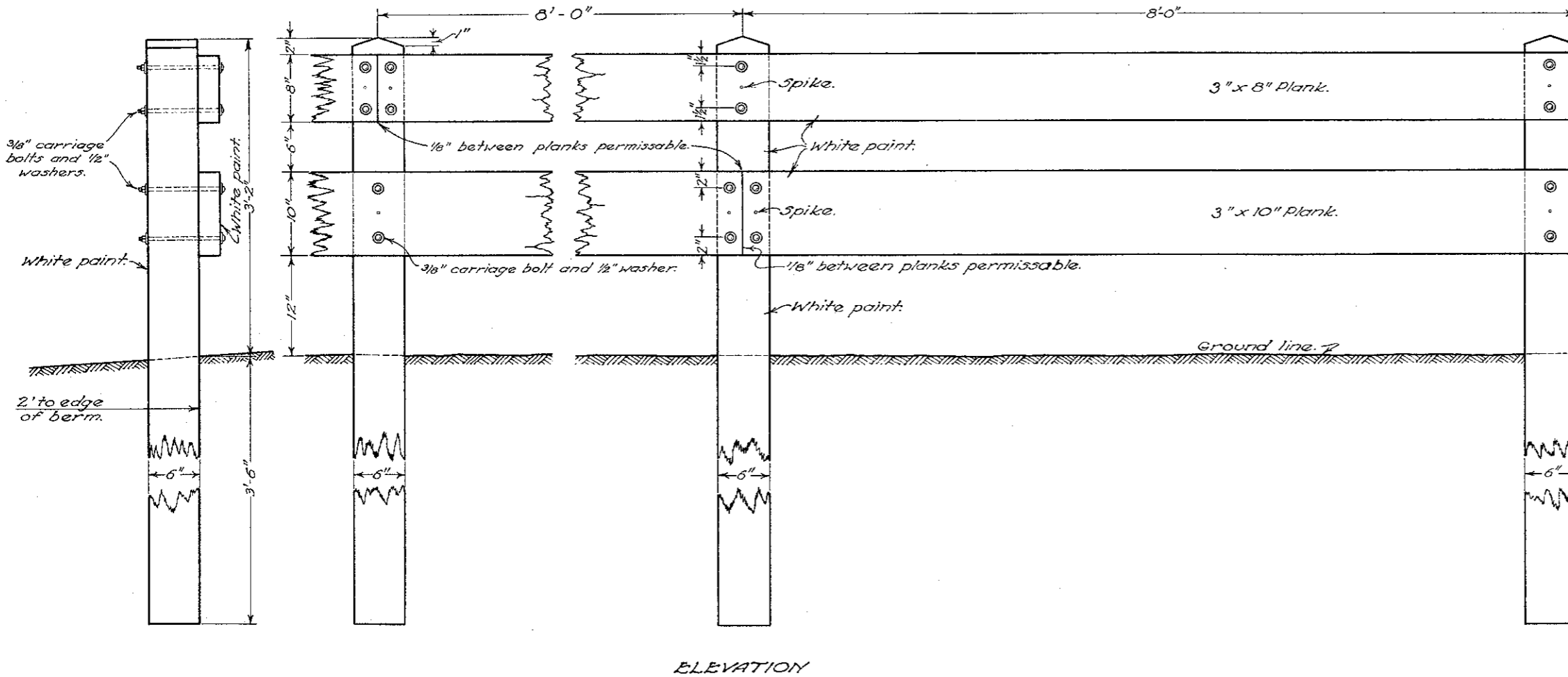


PLAN

BUREAU OF LOCATION & DESIGN OHIO DEPARTMENT OF HIGHWAYS	OCT. 15 APR. 15 7-3-1
GUARD RAIL	
STANDARD CONSTRUCTION DRAWING	
I-15 P-P	
APPROVED: <i>H.L.R.</i> CHIEF ENGINEER	

STANDARD TYPE P-P GUARD RAIL

NOTES



GENERAL: All wooden material used in this type of guard rail shall be of untreated native timber of the shapes and dimensions shown herewith, and to comply with the Material Details for untreated timber.

POSTS may be square sawed white oak or chest nut, full 6" x 6" or round wood posts which shall be from 6" minimum to 8" maximum top diameter and from 8" minimum to 10" maximum bottom diameter. Posts shall conform to the requirements of the Material Details.

All bark to be removed from posts before being set. Posts not to be notched for the placing of rails. Bolt holes shall be bored and tops of posts trimmed after the posts are set.

PLANK RAIL joints shall be made at alternate posts.

BOLTS: Carriage bolts and washers shall be galvanized or cadmium plated conforming to the requirements of the Material Details. The length of the carriage bolts shall be determined by the size of posts.

PAINTING: All exposed surfaces not galvanized or cadmium plated shall be given one prime coat of white paint and two coats of white lead and linseed oil paint. All surfaces in contact not galvanized or cadmium plated shall be painted one coat of white lead and linseed oil paint before being assembled.

All bolts that pass thru posts shall be dipped in white paint on using.

All paint shall conform to the requirements of the Material Details.

BUREAU OF LOCATION & DESIGN OHIO DEPARTMENT OF HIGHWAYS	OCT. 1933 APR. 1934 7-3-35 1-1-36
GUARD RAIL	
STANDARD CONSTRUCTION DRAWING I-15 P-P	
APPROVED <i>H.L.R.</i> CHIEF ENGINEER	