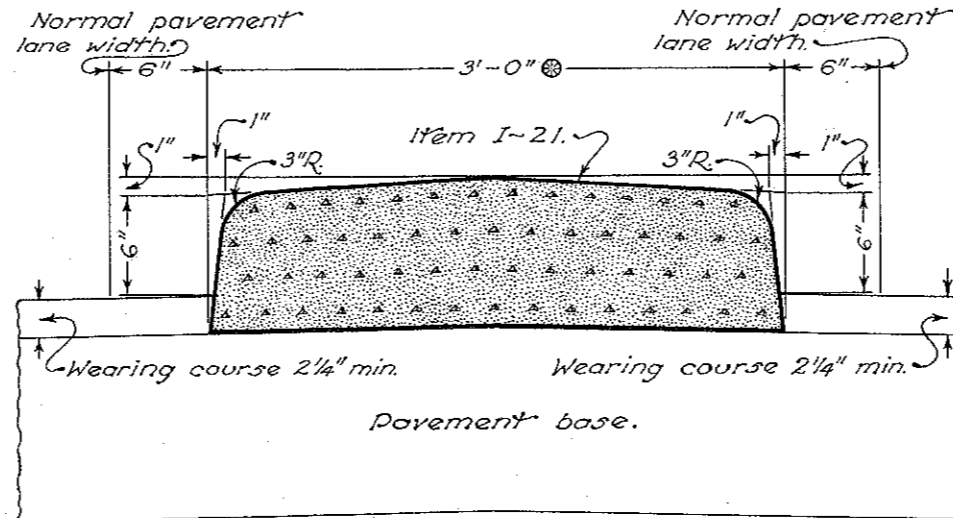
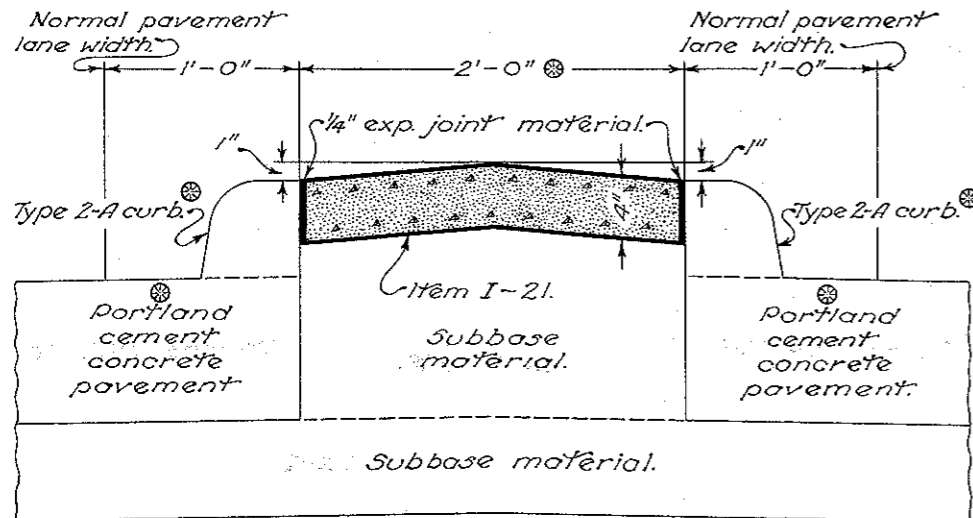


# STANDARD TRAFFIC DIVIDERS



## NOTES

### CONCRETE MEDIAN PAVEMENT ITEM I-21

**JOINTS:**— 1/2 inch Expansion Joints shall be constructed at 20 ft. intervals. Metal separator plates or templates shall be used if necessary to hold the joint material in accurate position during the placing of the concrete. Separator plates or templates, if used, shall be removed as soon as the concrete is in place to insure the accurate retention of the joint material.

Expansion joint material shall meet the requirements of Section M-10.02 or M-10.03.

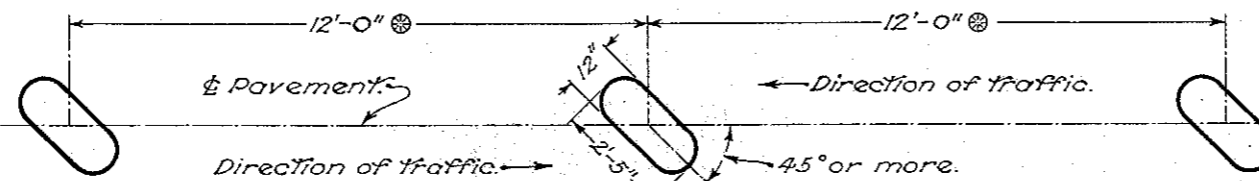
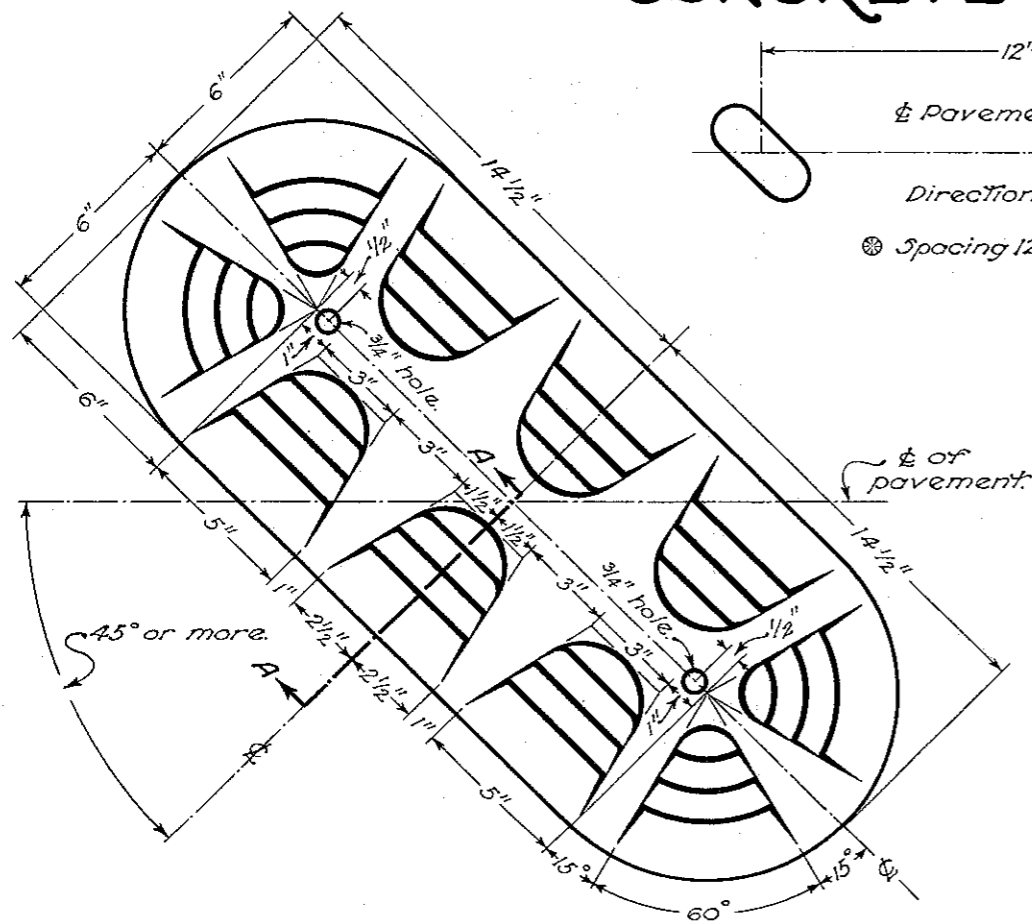
In addition to the 1/2 inch expansion joints, contraction joints, consisting of 1/2 inch minimum depth impressed joint formed and sealed as per standard drawing L.J. No. 1, shall be placed in Type 1 concrete median at intervals not to exceed 10 feet.

⊗ Unless otherwise shown in the plans.

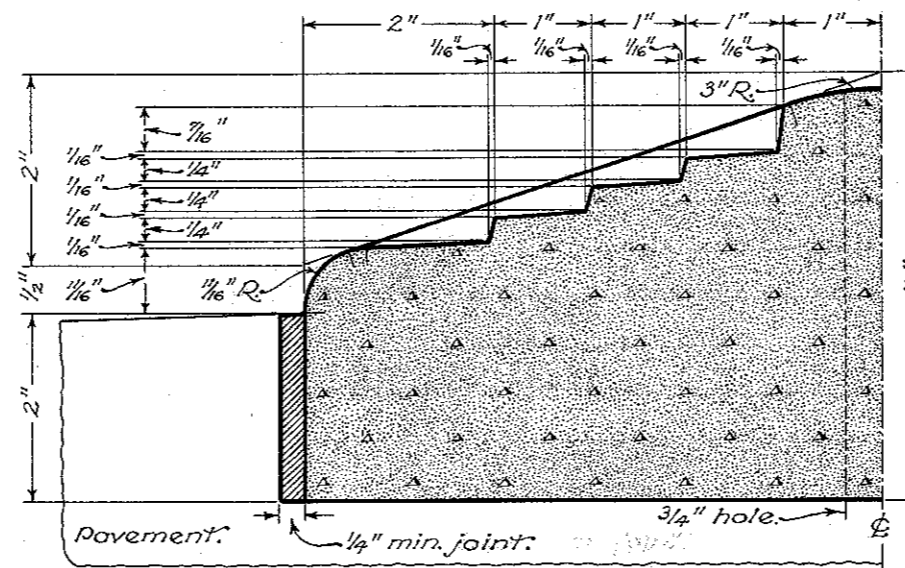
TYPE 1

TYPE 2

## CONCRETE MEDIANS



### SPACING



ENLARGED SECTION A-A

## PLAN PRECAST CONCRETE TRAFFIC DIVIDER

### PRECAST CONCRETE TRAFFIC DIVIDERS ITEM I-23

#### METHOD OF INSTALLATION

**WHEN PLACED IN BITUMINOUS CONCRETE:**— The dividers shall not be placed until the bituminous concrete surface has been completed. The opening remaining between the bituminous concrete and the traffic dividers shall be filled with 1:2 cement mortar or material meeting the requirements of Section M-10.23 or Section M-10.26.

**WHEN PLACED IN PORTLAND CEMENT CONCRETE:**— Openings into which the traffic dividers are to be set shall be formed by a method acceptable to the Engineer at the time the concrete pavement is placed. The opening remaining between the concrete pavement and the traffic dividers shall be filled with 1:2 cement mortar or material meeting the requirements of Section M-10.23 or Section M-10.26.

**LIFTING HOLES:**— After the precast traffic dividers are set in the pavement, the 3/4 inch holes shall be filled to within 3/4 inch of the surface with dry sand and sealed with 1:2 cement mortar or material meeting the requirements of Section M-5.1, Section M-10.23 or Section M-10.26.

BUREAU OF LOCATION AND DESIGN  
OHIO DEPARTMENT OF HIGHWAYS

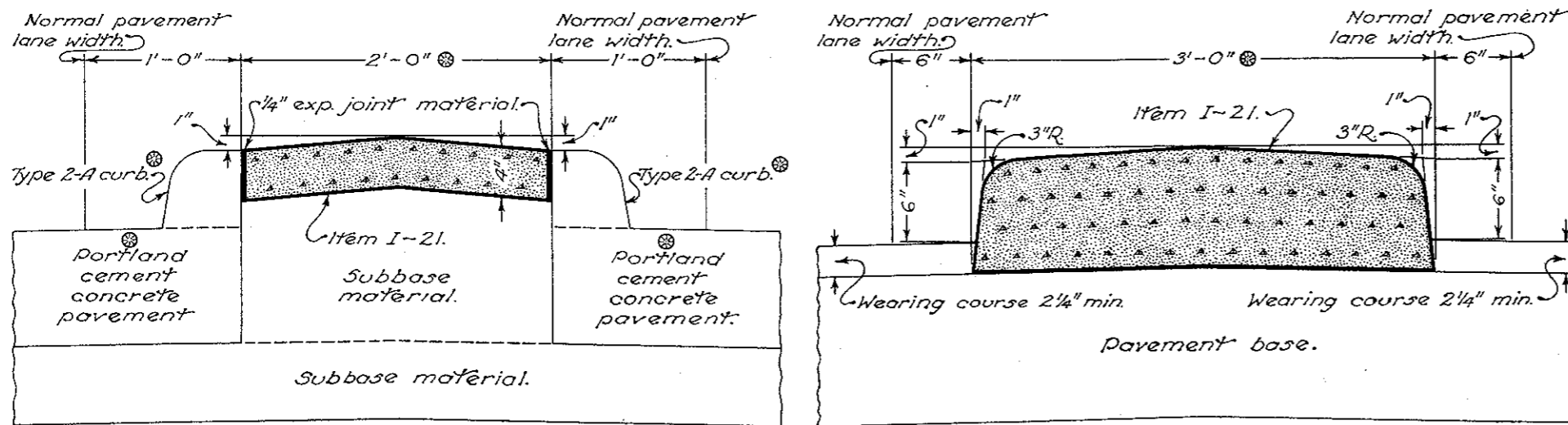
## TRAFFIC DIVIDERS

STANDARD  
CONSTRUCTION DRAWING  
I-21-23

APPROVED: *[Signature]* ENGINEER  
LOCATION AND DESIGN

DATE  
1-2-51  
12-1-54

# STANDARD TRAFFIC DIVIDERS

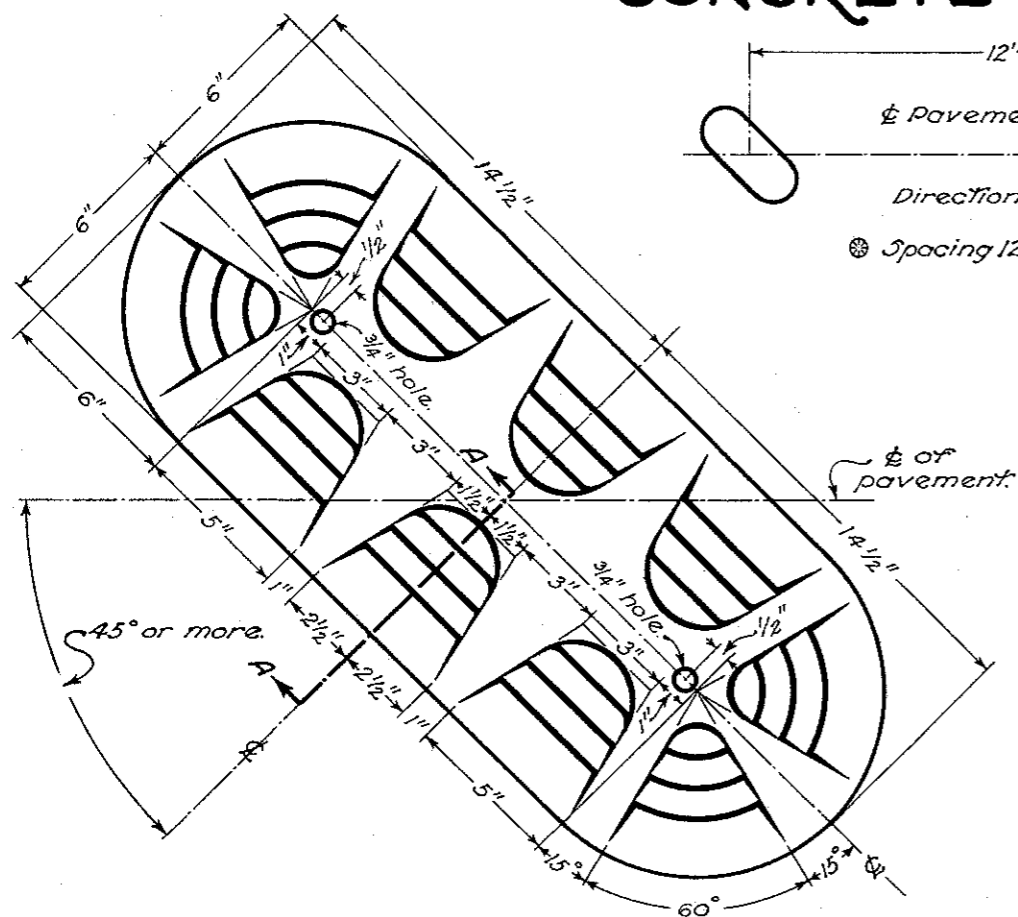


⊗ Unless otherwise shown in the plans.

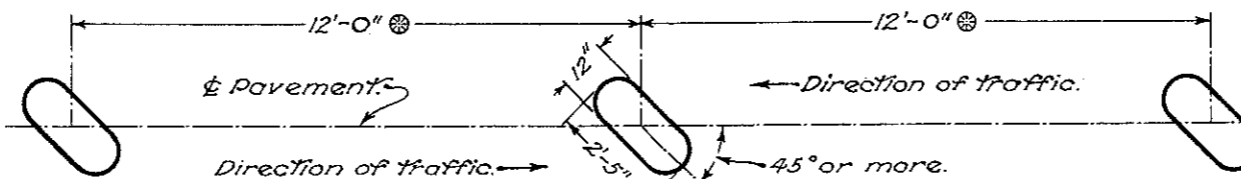
TYPE 1

TYPE 2

## CONCRETE MEDIANS

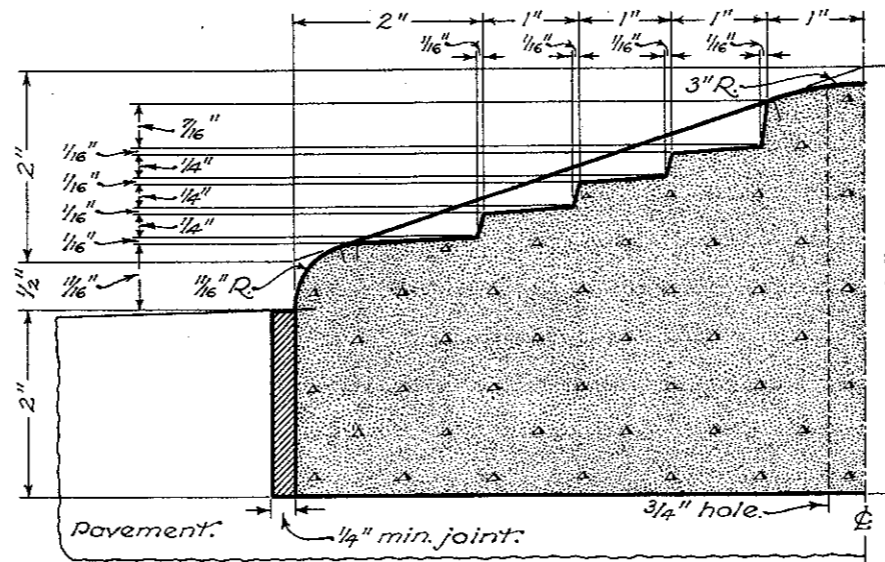


PLAN  
PRECAST CONCRETE TRAFFIC DIVIDER



⊗ Spacing 12'-0" ctr. to ctr. except where otherwise shown on plans.

SPACING



ENLARGED SECTION A-A

## NOTES

### CONCRETE MEDIAN PAVEMENT ITEM I-21

**JOINTS:**— 1/4 inch Expansion Joints shall be constructed at 20 ft. intervals. Metal separator plates or templates shall be used if necessary to hold the joint material in accurate position during the placing of the concrete. Separator plates or templates, if used, shall be removed as soon as the concrete is in place to insure the accurate retention of the joint material.

Expansion joint material shall meet the requirements of Section M-10.02 or M-10.03.

In addition to the 1/4 inch expansion joints, Contraction joints, consisting of 1/2 inch minimum depth impressed joint formed and sealed as per standard drawing L.J. No. 1, shall be placed in Type 1 concrete median at intervals not to exceed 10 feet.

### PRECAST CONCRETE TRAFFIC DIVIDERS ITEM I-23

#### METHOD OF INSTALLATION

**GENERAL:**— Precast concrete traffic dividers shall be set in a 1:2 cement mortar bed when necessary to assure a uniformly firm foundation for the dividers.

**WHEN PLACED IN BITUMINOUS CONCRETE:**— The dividers shall not be placed until the bituminous concrete surface has been completed. The opening remaining between the bituminous concrete and the traffic dividers shall be filled with 1:2 cement mortar or material meeting the requirements of Section M-10.23 or Section M-10.26.

**WHEN PLACED IN PORTLAND CEMENT CONCRETE:**— Openings into which the traffic dividers are to be set shall be formed by a method acceptable to the Engineer at the time the concrete pavement is placed. The opening remaining between the concrete pavement and the traffic dividers shall be filled with 1:2 cement mortar or material meeting the requirements of Section M-10.23 or Section M-10.26.

**LIFTING HOLES:**— After the precast traffic dividers are set in the pavement, the 3/4 inch holes shall be filled to within 3/4 inch of the surface with dry sand and sealed with 1:2 cement mortar or material meeting the requirements of Section M-5.1, Section M-10.23 or Section M-10.26.

BUREAU OF LOCATION AND DESIGN  
OHIO DEPARTMENT OF HIGHWAYS

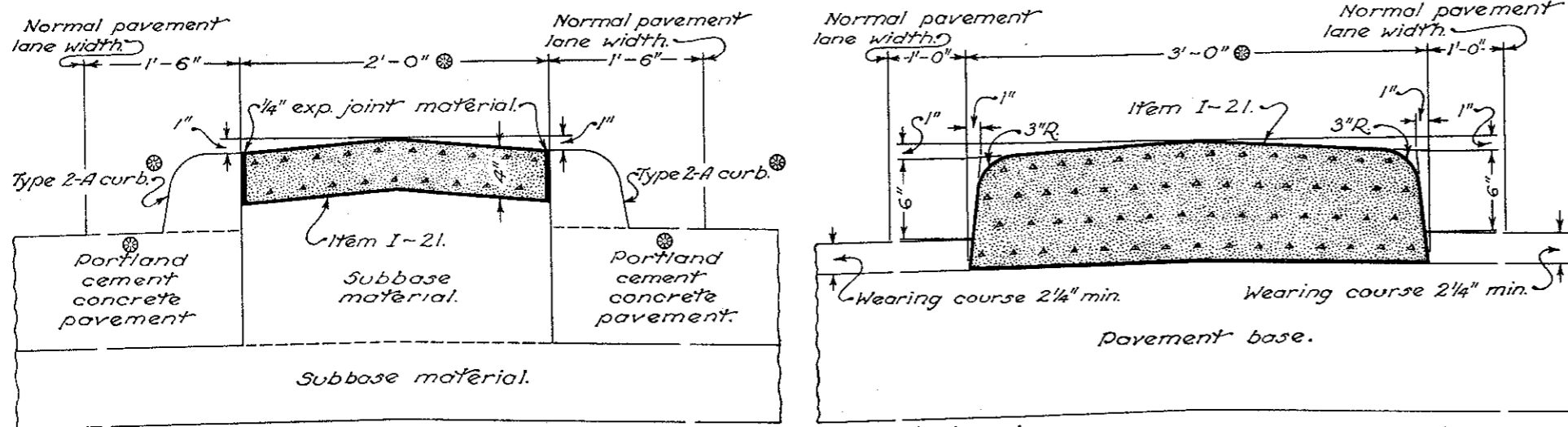
# TRAFFIC DIVIDERS

STANDARD  
CONSTRUCTION I-21-23  
DRAWING

APPROVED ENGINEER  
L. LOCATION AND DESIGN

DATE:  
1-2-51  
12-1-54  
10-17-55

# STANDARD TRAFFIC DIVIDERS

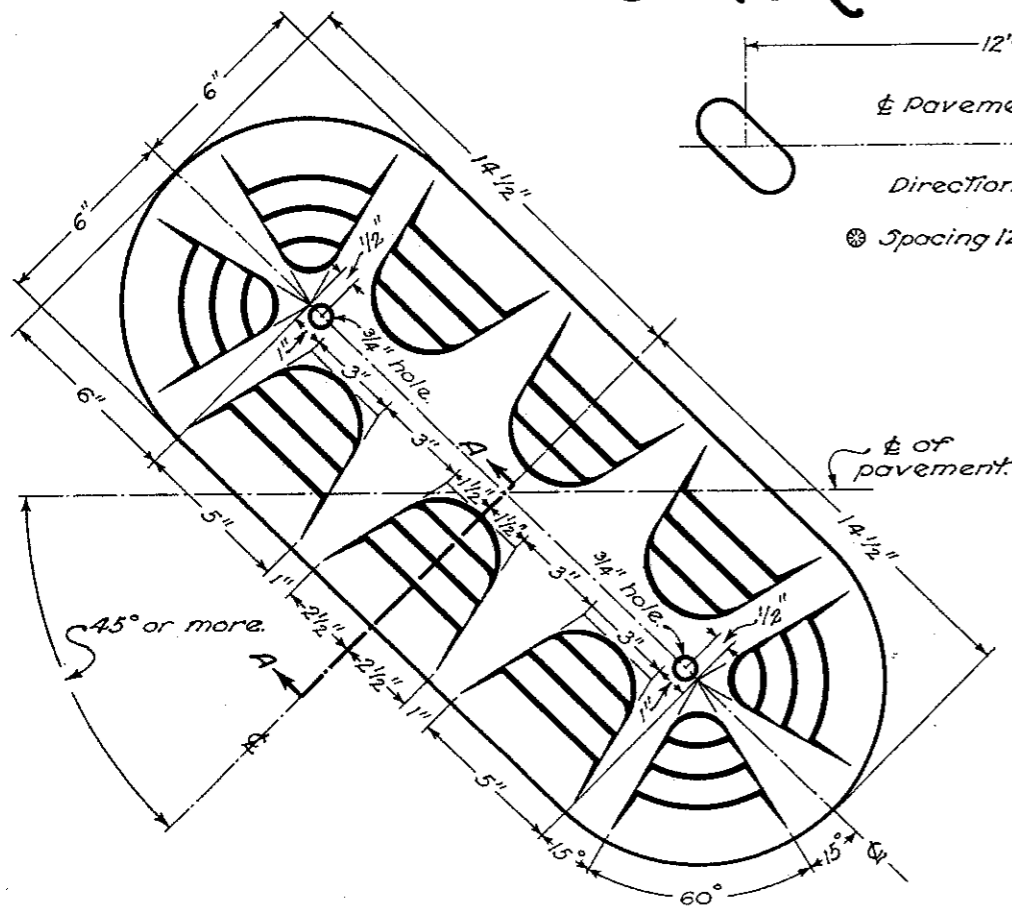


TYPE 1

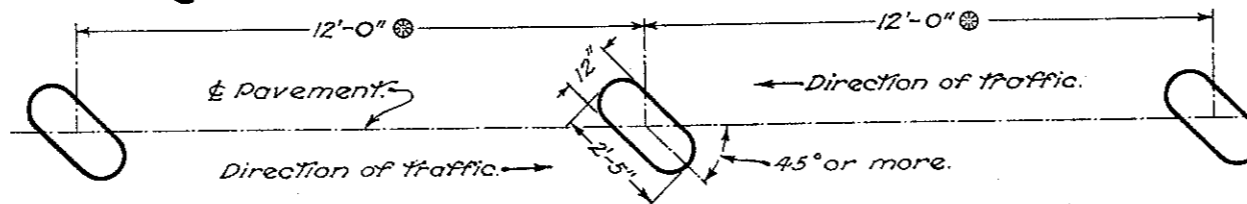
TYPE 2

## CONCRETE MEDIANS

⊗ Unless otherwise shown in the plans.

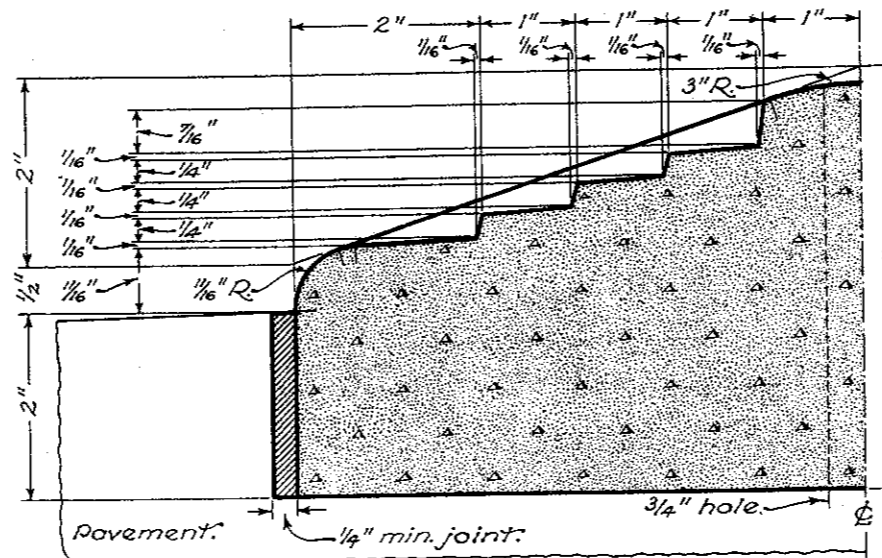


PLAN  
PRECAST CONCRETE TRAFFIC DIVIDER



⊗ Spacing 12'-0" ctr. to ctr. except where otherwise shown on plans.

### SPACING



ENLARGED SECTION A-A

## NOTES

### CONCRETE MEDIAN PAVEMENT ITEM I-21

**JOINTS:**— 1/4 inch Expansion Joints shall be constructed at 20 ft. intervals. Metal separator plates or templates shall be used if necessary to hold the joint material in accurate position during the placing of the concrete. Separator plates or templates, if used, shall be removed as soon as the concrete is in place to insure the accurate retention of the joint material.

Expansion joint material shall meet the requirements of Section M-10.02 or M-10.03.

In addition to the 1/4 inch expansion joints, contraction joints, consisting of 1/2 inch minimum depth impressed joint formed and sealed as per standard drawing L.J. No. 1, shall be placed in Type 1 concrete median at intervals not to exceed 10 feet.

### PRECAST CONCRETE TRAFFIC DIVIDERS ITEM I-23

#### METHOD OF INSTALLATION

**GENERAL:**— Precast concrete traffic dividers shall be set in a 1:2 cement mortar bed when necessary to assure a uniformly firm foundation for the dividers.

**WHEN PLACED IN BITUMINOUS CONCRETE:**— The dividers shall not be placed until the bituminous concrete surface has been completed. The opening remaining between the bituminous concrete and the traffic dividers shall be filled with 1:2 cement mortar or material meeting the requirements of Section M-10.23 or Section M-10.26.

**WHEN PLACED IN PORTLAND CEMENT CONCRETE:**— Openings into which the traffic dividers are to be set shall be formed by a method acceptable to the Engineer at the time the concrete pavement is placed. The opening remaining between the concrete pavement and the traffic dividers shall be filled with 1:2 cement mortar or material meeting the requirements of Section M-10.23 or Section M-10.26.

**LIFTING HOLES:**— After the precast traffic dividers are set in the pavement, the 3/4 inch holes shall be filled to within 3/4 inch of the surface with dry sand and sealed with 1:2 cement mortar or material meeting the requirements of Section M-5.1, Section M-10.23 or Section M-10.26.

BUREAU OF LOCATION AND DESIGN  
OHIO DEPARTMENT OF HIGHWAYS

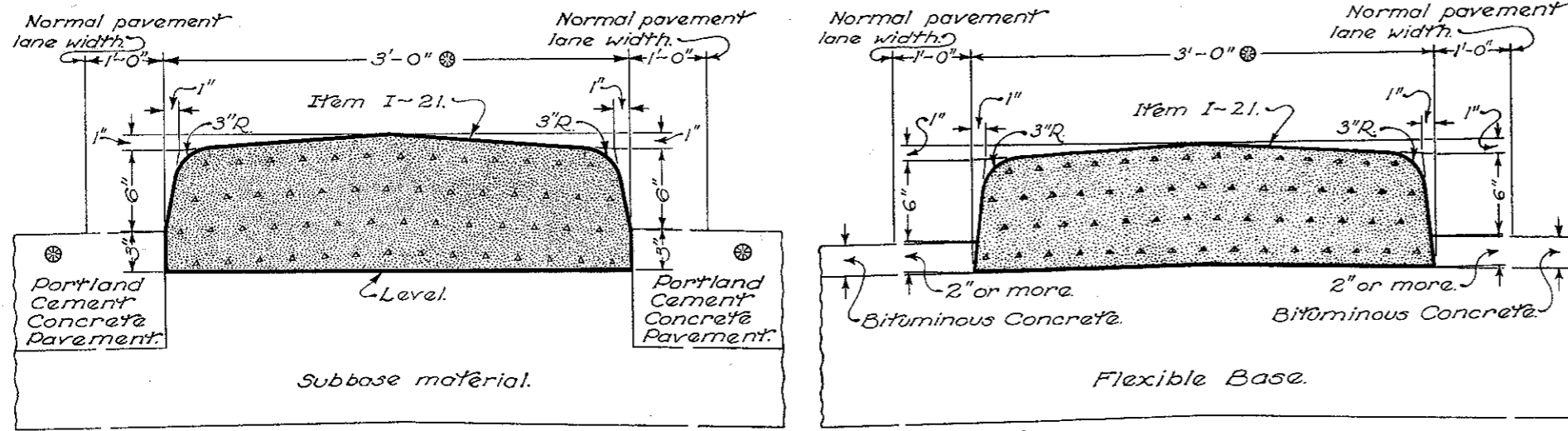
## TRAFFIC DIVIDERS

STANDARD  
CONSTRUCTION  
DRAWING I-21-23

APPROVED *[Signature]* ENGINEER  
LOCATION AND DESIGN

DATE:  
1-2-51  
12-4-54  
10-17-55  
8-1-56

# STANDARD TRAFFIC DIVIDERS



⊙ Unless otherwise shown in the plans.

## NOTES CONCRETE MEDIAN PAVEMENT ITEM I-21

JOINTS:— $\frac{1}{4}$  inch Expansion Joints shall be constructed at 20 ft. intervals unless otherwise shown on the plans. Metal separator plates or templets shall be used if necessary to hold the joint material in accurate position during the placing of the concrete.

Separator plates or templets, if used, shall be removed as soon as the concrete is in place to insure the accurate retention of the joint material.

Expansion joint material shall meet the requirements of Section M-10.02.

## PRECAST CONCRETE TRAFFIC DIVIDERS ITEM I-23

### METHOD OF INSTALLATION

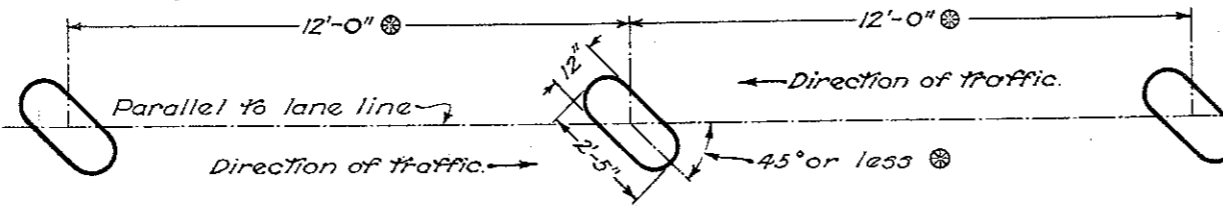
GENERAL:—Precast concrete traffic dividers shall be set in a 1:2 cement mortar bed when necessary to assure a uniformly firm foundation for the dividers.

WHEN PLACED IN BITUMINOUS CONCRETE:—The dividers shall not be placed until the bituminous concrete surface has been completed. The opening remaining between the bituminous concrete and the traffic dividers shall be filled with 1:2 cement mortar or material meeting the requirements of Section M-10.23 or Section M-10.26.

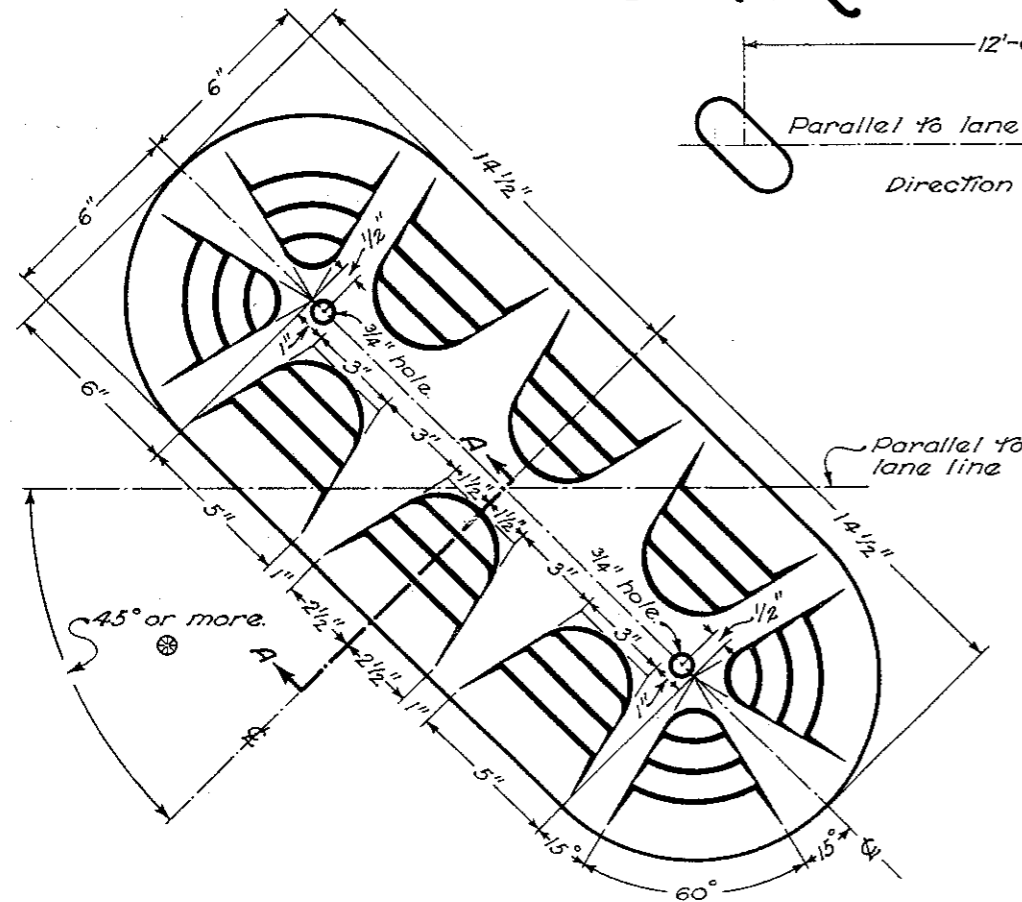
WHEN PLACED IN PORTLAND CEMENT CONCRETE:—Openings into which the traffic dividers are to be set shall be formed by a method acceptable to the Engineer at the time the concrete pavement is placed. The opening remaining between the concrete pavement and the traffic dividers shall be filled with 1:2 cement mortar or material meeting the requirements of Section M-10.23 or Section M-10.26.

LIFTING HOLES:—After the precast traffic dividers are set in the pavement, the  $\frac{3}{4}$  inch holes shall be filled to within  $\frac{3}{4}$  inch of the surface with dry sand and sealed with 1:2 cement mortar or material meeting the requirements of Section M-5.1, Section M-10.23 or Section M-10.26.

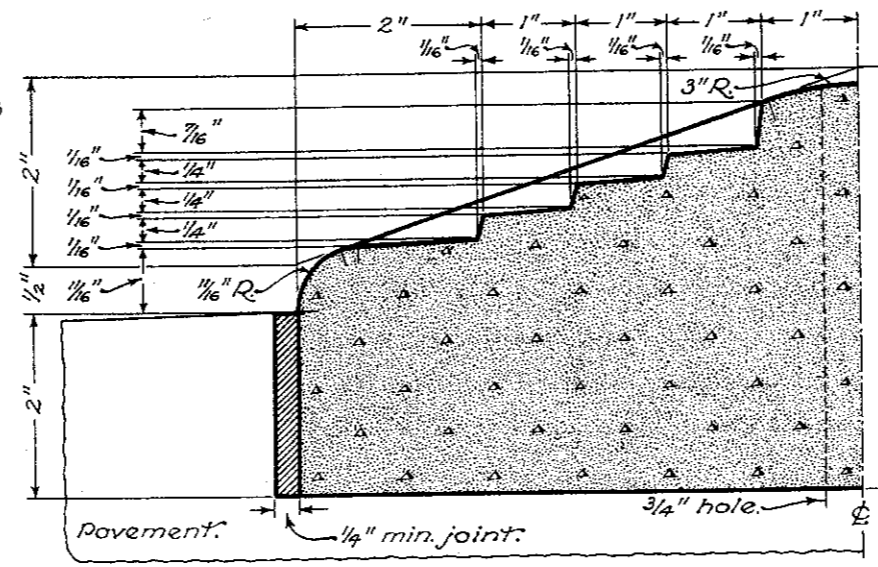
## CONCRETE MEDIANS



### SPACING



PLAN  
PRECAST CONCRETE TRAFFIC DIVIDER



ENLARGED SECTION A-A

BUREAU OF LOCATION AND DESIGN  
OHIO DEPARTMENT OF HIGHWAYS

## TRAFFIC DIVIDERS

STANDARD  
CONSTRUCTION DRAWING  
I-21-23

APPROVED: *R. M. Dickstein* ENGR. L. & D.

DATE:  
1-2-51  
12-1-54  
10-17-55  
8-1-56  
3-10-64