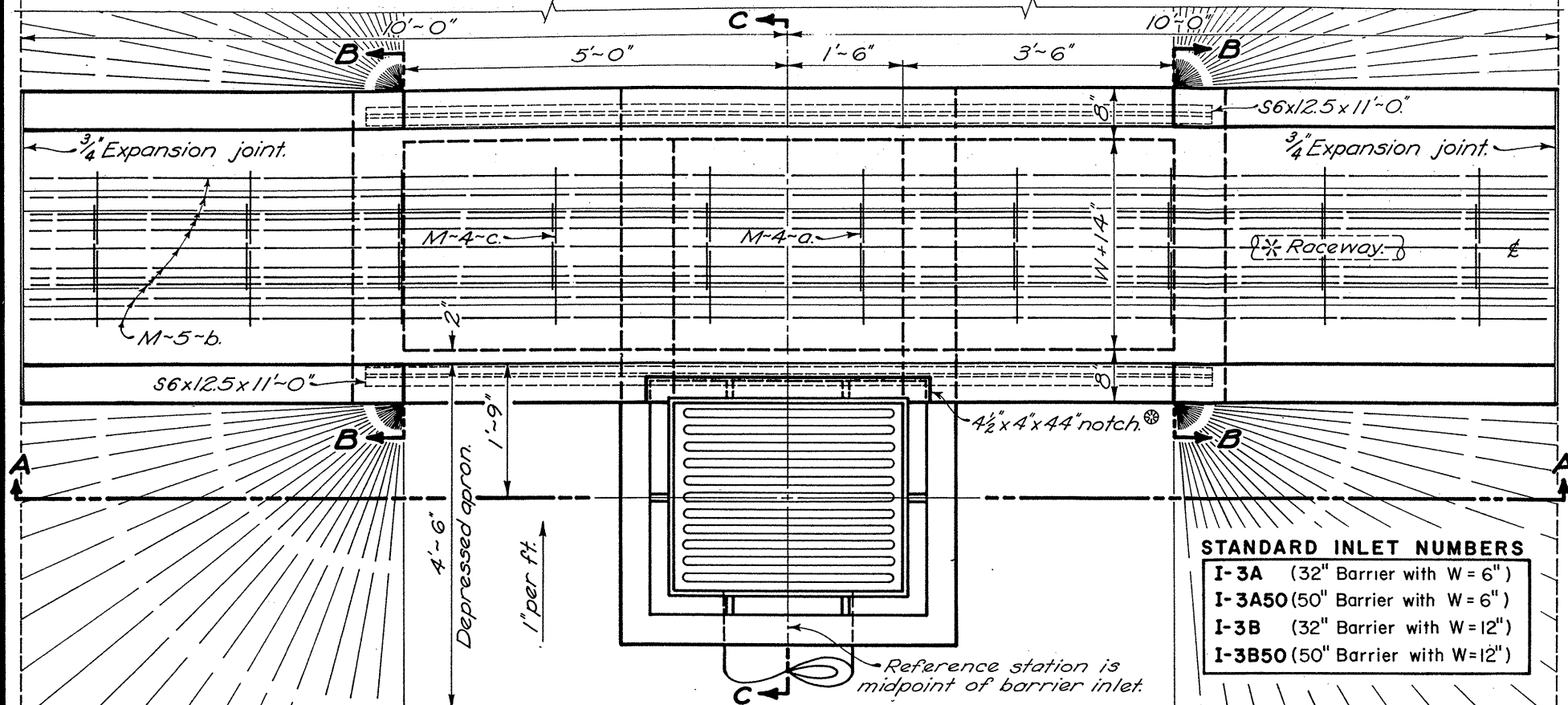
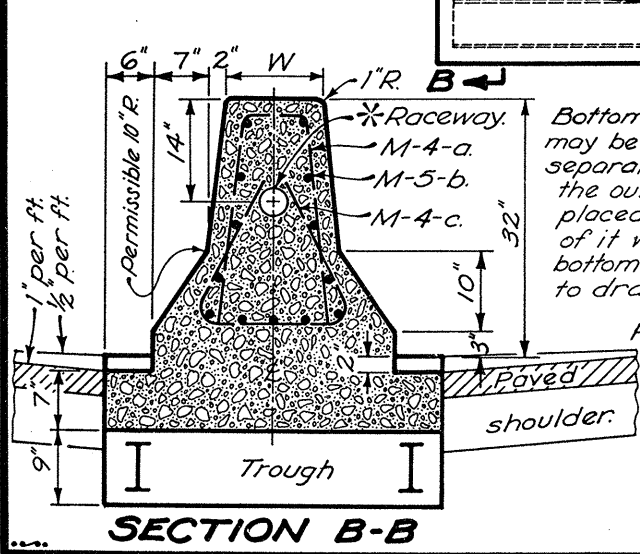
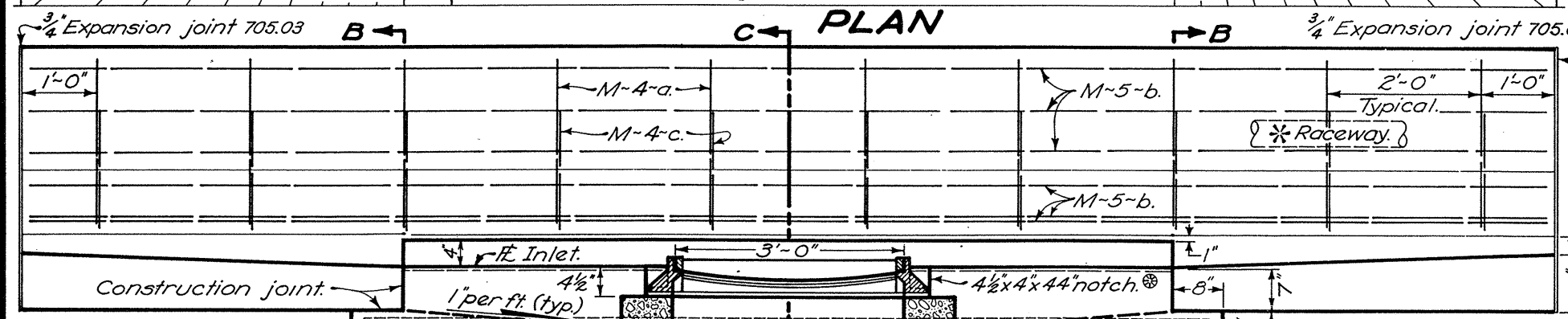


Deduct 20 lin. ft. from concrete barrier. All costs for concrete barrier and inlet are included in Item 604.



STANDARD INLET NUMBERS

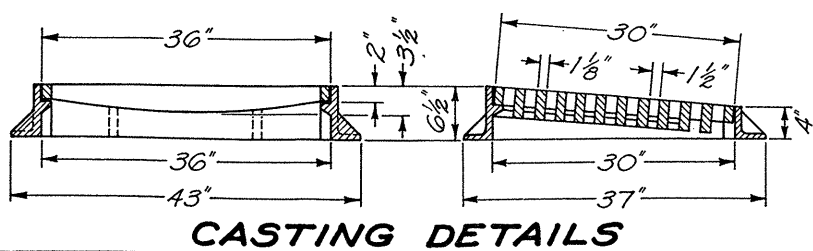
I-3A	(32" Barrier with W = 6")
I-3A50	(50" Barrier with W = 6")
I-3B	(32" Barrier with W = 12")
I-3B50	(50" Barrier with W = 12")



ELEVATION A-A

STEEL LIST

INLET No.	W	M-4-a		M-5-b		M-4-c		36x12.5	
		No.	Lin. Ft.	No.	Lin. Ft.	No.	Lin. Ft.	No.	Lin. Ft.
I-3A	6"	10	4'-6"	13	19'-8"	10	3'-1"	2	11'-0"
I-3B	12"	10	5'-0"	13	19'-8"	10	4'-6"	2	11'-0"



THE WALLS between the bottom slab and the upper permissible construction joint may be built of brick, concrete block or cast-in-place concrete, 8" nominal thickness for depths of 12" or less. Precast walls shall have a minimum thickness of 6" and be reinforced sufficiently to permit shipping and handling without damage. The unit above the upper permissible construction joint may be precast or cast-in-place. **HEIGHT:** When placed in 50" high barrier the 32" height shall be made 50" per details on MC-9. **CONCRETE,** cast-in-place, to be Class C. All precast concrete shall meet the requirements of 706.13 with 6 ± 2% air void content in the hardened concrete. Required markings shall include the inlet number.

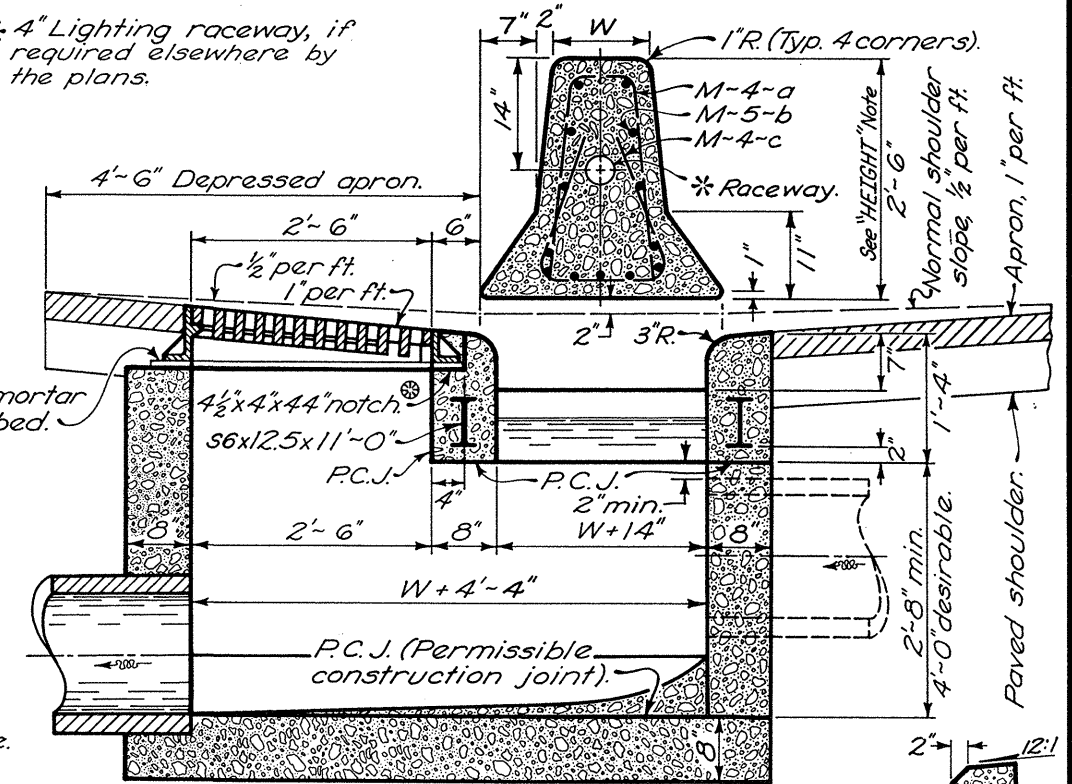
STEPS shall be in accordance with Standard Drawing MH-1. Minimum weight of frame and cover shall be 540 pounds.

GRATE LOCATION: In superelevated curves or at other locations where there is unequal discharge from the directional roadways, the inlet grating shall be located in the roadway which discharges the major flow.

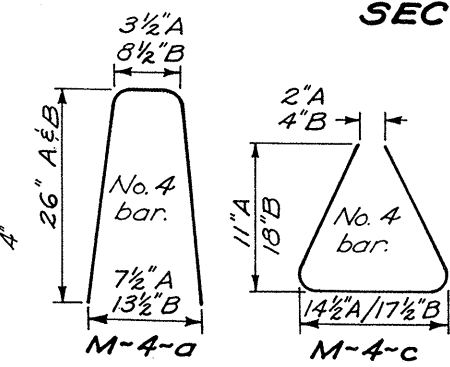
INLETS OVER 12 FEET IN DEPTH shall be precast or cast-in-place concrete; reinforced with No. 4 bars on 12" centers both vertically and horizontally with 2" clearance from inside wall face.

OPENINGS for pipes shall be O.D.+2" when prefabricated or field cut.

* 4" Lighting raceway, if required elsewhere by the plans.



SECTION C-C



BUREAU OF LOCATION AND DESIGN
OHIO DEPARTMENT OF TRANSPORTATION

**BARRIER
MEDIAN INLETS**

STANDARD
CONSTRUCTION
DRAWING
I-3A & B
APPROVED *[Signature]* ENGR, L. & D.

DATE
1-20-70
11-1-77
5-1-79
4-1-80