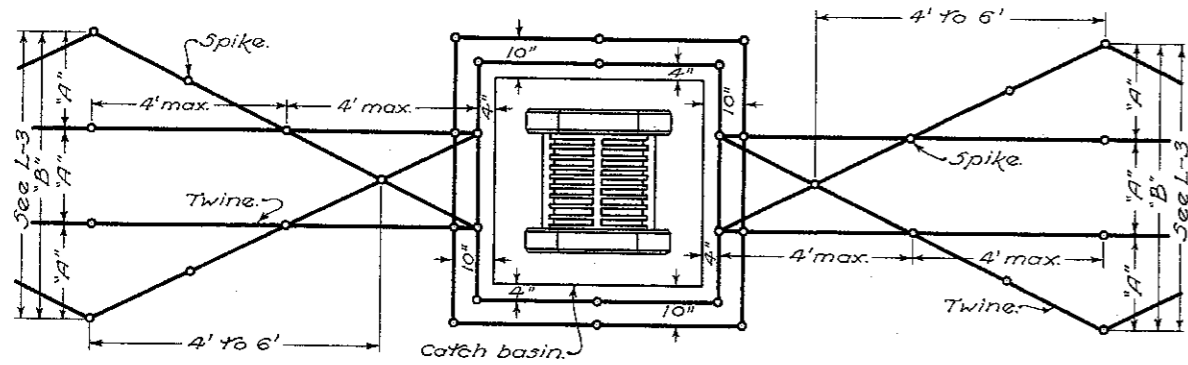
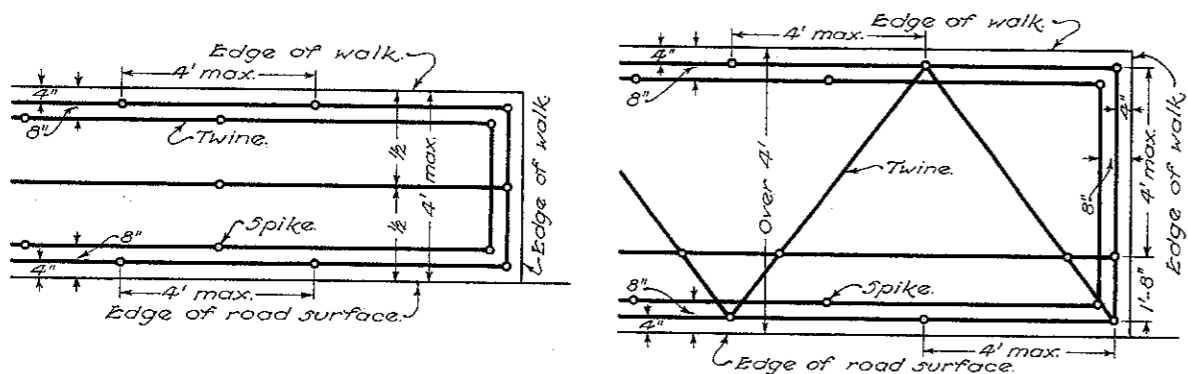


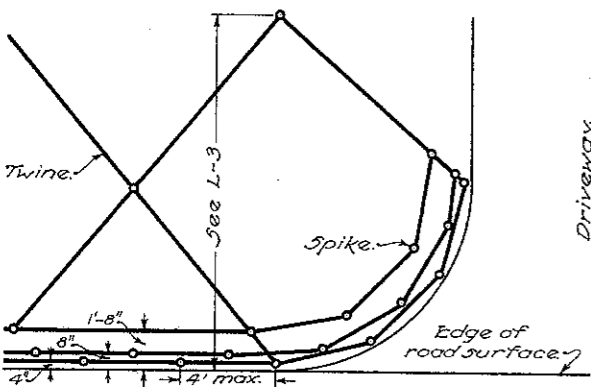
TYING OF MULCHED AREAS



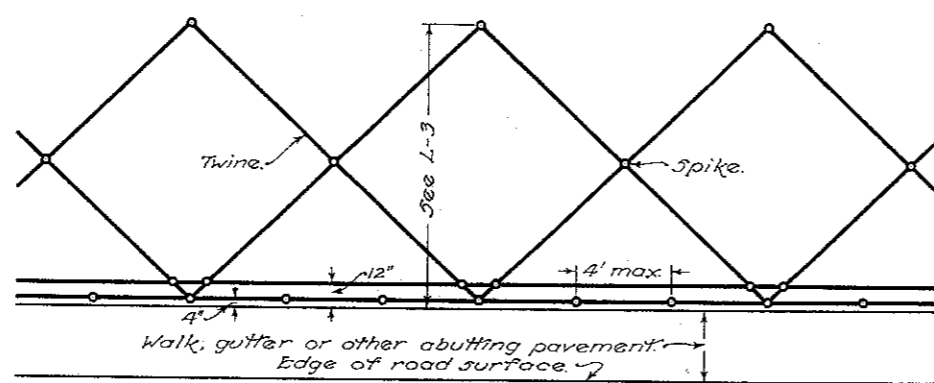
AROUND CATCH BASIN IN SIDE DITCH



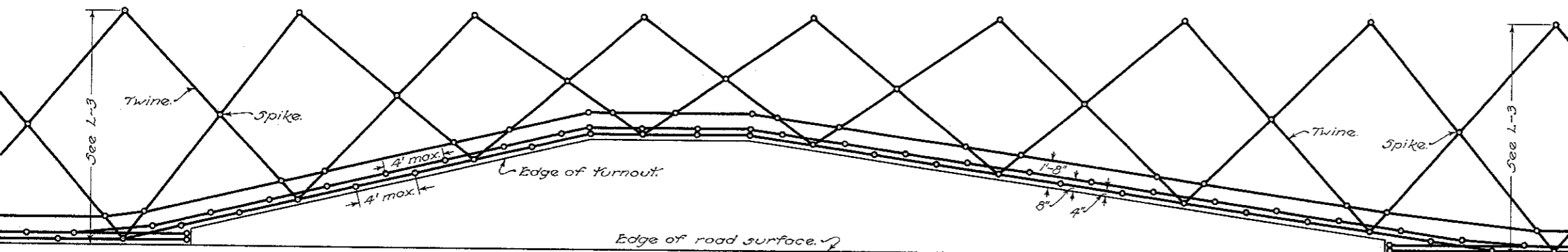
PARKWAY STRIP BETWEEN WALK AND ROAD SURFACE



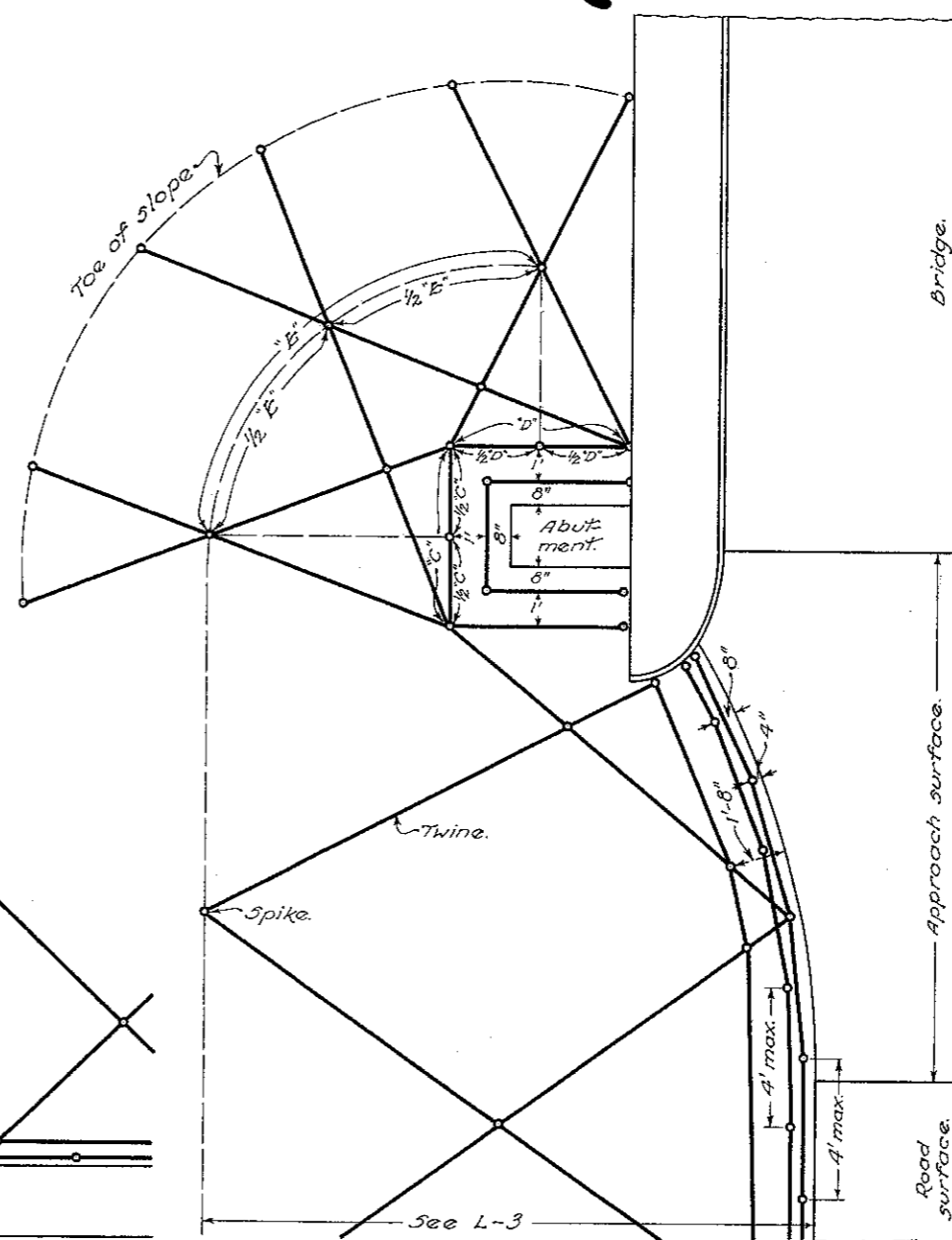
DRIVEWAYS



BEYOND PAVEMENT ABUTTING ROAD SURFACE



MAILBOX TURNOUTS



AT BRIDGE ABUTMENT

NOTES

GENERAL: All methods of tying as illustrated on this sheet are minimum amounts.

Twine and spikes shall be used as directed by the engineer on any other mulched areas not covered by these details, or where there is a need for additional twine and spikes to hold the mulch properly in place. See Section L-9.12 of the General Specifications.

In all cases the twine shall be wrapped once about the spike.

SHOULDERS: The twine cross ties and spikes for holding the mulch material in place on shoulders shall extend from 4" from the road surface edge to beyond the break of any fill slopes. On cut shoulder slopes they shall extend from 4" from the road surface edge to the center of the shoulder's rounded edge.

The two lines of twine nearest and parallel to the road surface shall be further held by spikes spaced a maximum of 4' apart.

DITCHES: Cross ties shall be placed in all ditches and shall have sufficient spikes to hold twine approximately at finished grade of the mulch material. In addition to the cross ties, two lines of twine shall be placed in the bottom of the ditch on top of the cross ties and parallel to the direction of flow and with spacing between the two lines of $\frac{1}{2}$ the width of the ditch; width "A" equals $\frac{1}{3}$ of "B". Spikes shall be spaced a maximum of 4' on the parallel lines.

BUREAU OF LOCATION AND DESIGN
OHIO DEPARTMENT OF HIGHWAYS

ROADSIDE
IMPROVEMENT

STANDARD
CONSTRUCTION DRAWING
L-3-A
APPROVED K. L. R. CHIEF ENGINEER

DATE
4-1-50