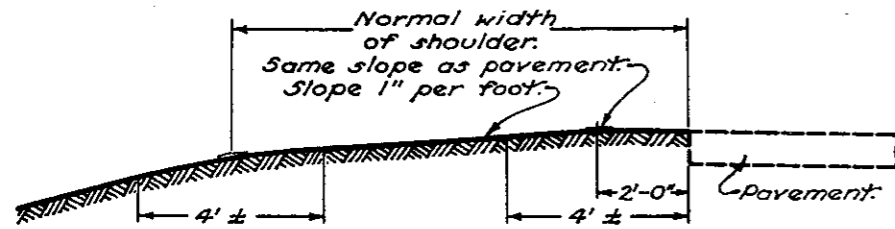
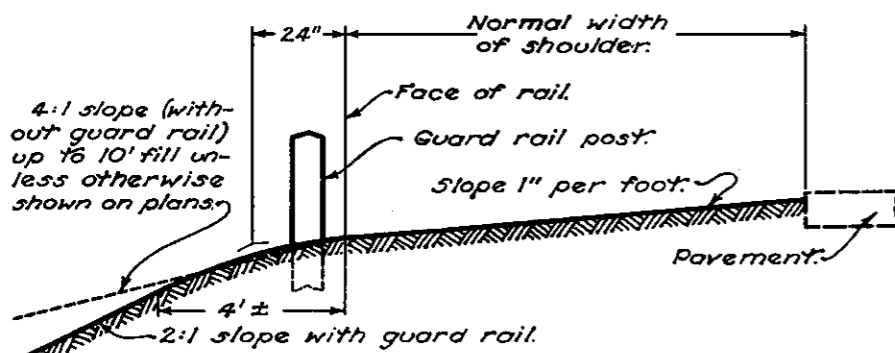


ROADWAY ITEMS



*All angles at change of slope shall be rounded as shown.

SHOULDER TREATMENT ON HIGH SIDE OF SUPERELEVATED CURVES

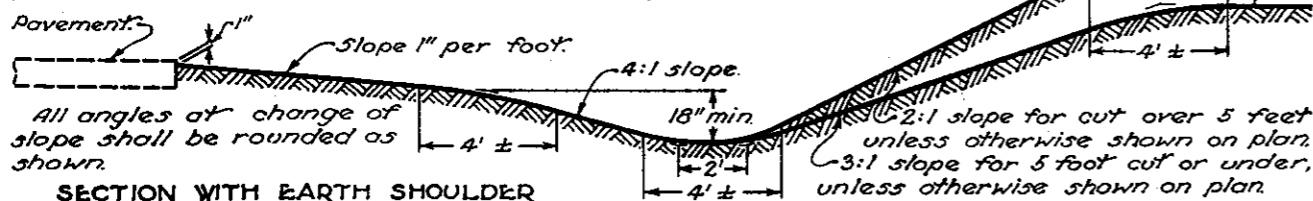


*Shoulders shall be constructed 2 feet wider than the normal section where guard rail is required.
*Angle at change of slope shall be rounded as shown.

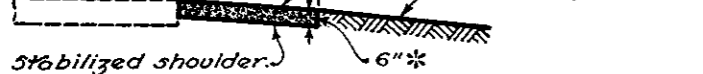
LOCATION OF GUARD RAIL

Shoulders at the edges of all pavement without curbs shall be finished 1 inch below pavement edge except on the high side of superelevated curves.

When a stabilized shoulder is constructed adjacent to the pavement, it shall be finished flush with the pavement surface.

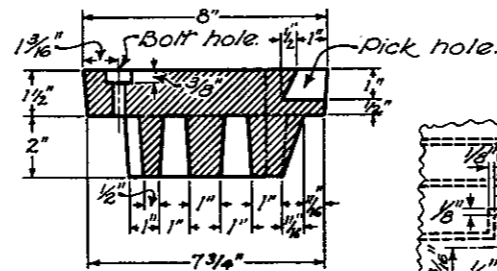


All angles at change of slope shall be rounded as shown.

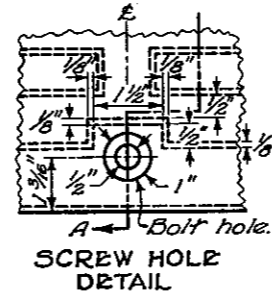


SECTION USING STABILIZED SHOULDER

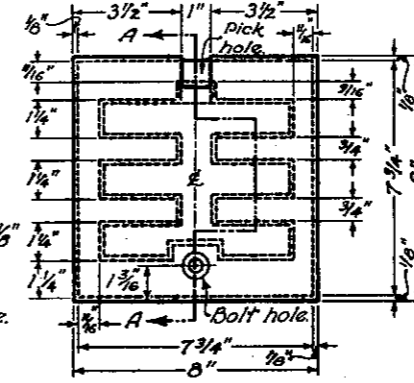
NORMAL SHOULDER AND DITCH CONSTRUCTION



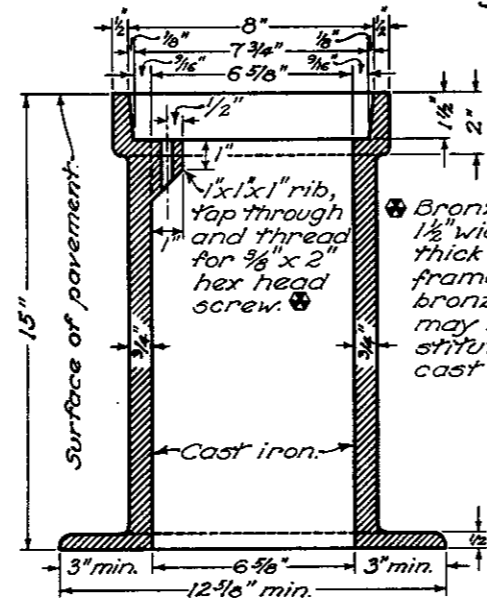
MONUMENT BOX COVER SECTION A-A



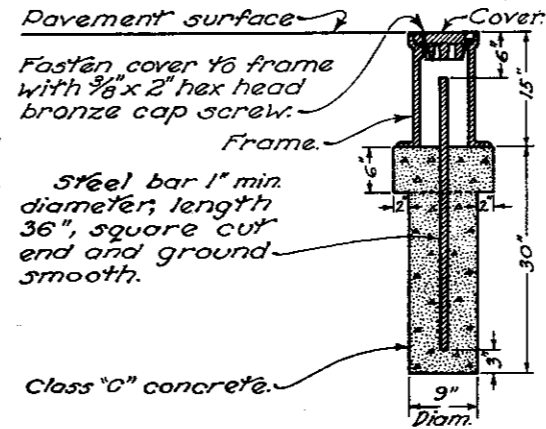
SCREW HOLE DETAIL



MONUMENT BOX COVER PLAN



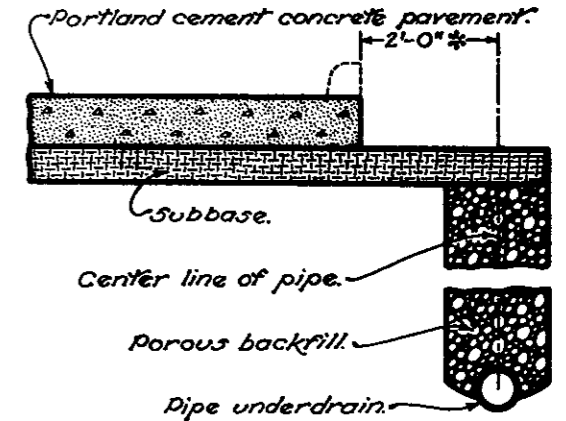
MONUMENT BOX FRAME SECTION



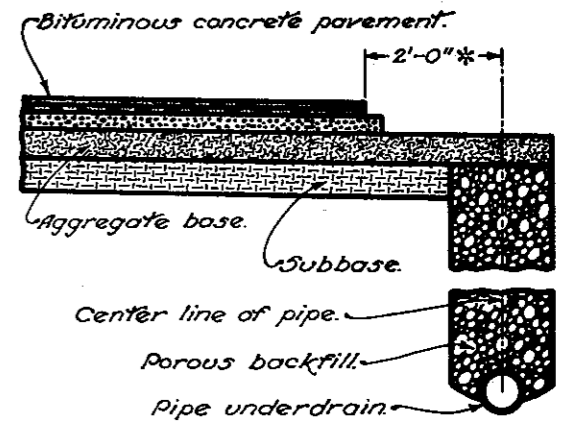
MONUMENT ASSEMBLY SECTION

Cost of furnishing and placing monument box, steel bar and class "C" concrete included in price bid for 604 Monument Assembly.

MONUMENT ASSEMBLY



WITH PORTLAND CEMENT CONCRETE PAVEMENT



WITH FLEXIBLE PAVEMENT

PIPE UNDERDRAIN CONSTRUCTION

*Unless otherwise shown on plan.

BUREAU OF LOCATION AND DESIGN
OHIO DEPARTMENT OF HIGHWAYS

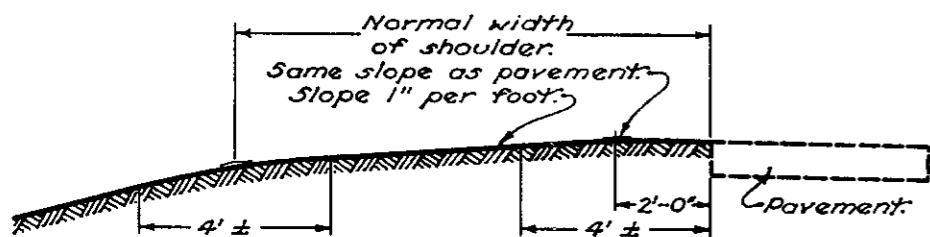
ROADWAY ITEMS

DATE
6-1-'65

STANDARD CONSTRUCTION DRAWING
APPROVED *R. R. R. ENOR* L. & D.

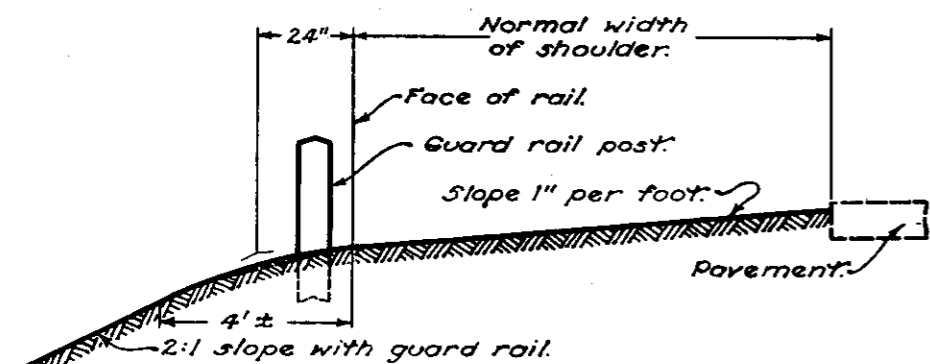
MC-1

ROADWAY ITEMS



*All angles at change of slope shall be rounded as shown.

SHOULDER TREATMENT ON HIGH SIDE OF SUPERELEVATED CURVES

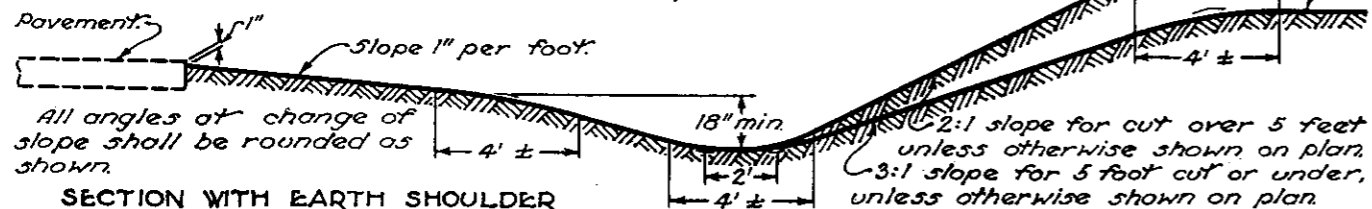


*Shoulders shall be constructed 2 feet wider than the normal section where guard rail is required.
*Angle at change of slope shall be rounded as shown.

LOCATION OF GUARD RAIL

Shoulders at the edges of all pavement without curbs shall be finished 1 inch below pavement edge except on the high side of superelevated curves.

When a stabilized shoulder is constructed adjacent to the pavement, it shall be finished flush with the pavement surface.

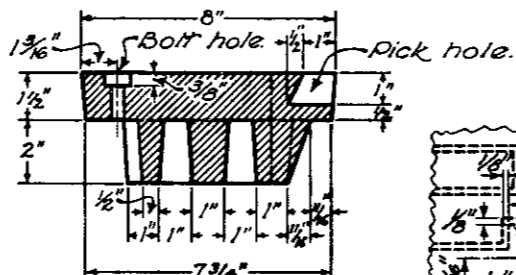


All angles at change of slope shall be rounded as shown.

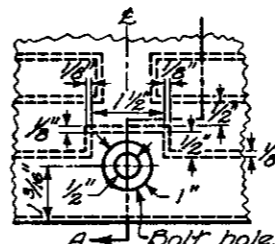
SECTION WITH EARTH SHOULDER

SECTION USING STABILIZED SHOULDER

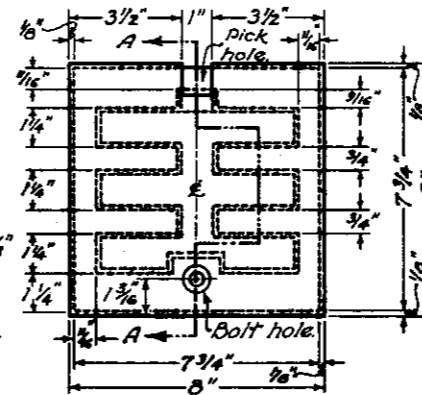
NORMAL SHOULDER AND DITCH CONSTRUCTION (TURF OR STABILIZED SHOULDERS)



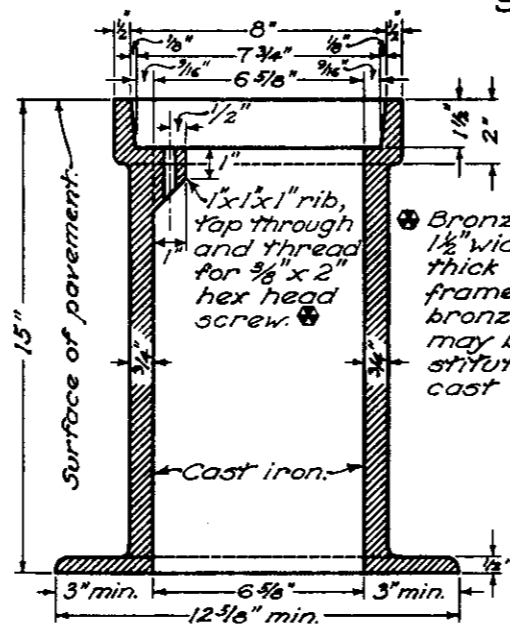
MONUMENT BOX COVER SECTION A-A



SCREW HOLE DETAIL



MONUMENT BOX COVER PLAN



MONUMENT BOX FRAME SECTION

Pavement surface

Fasten cover to frame with 3/8" x 2" hex head bronze cap screw.

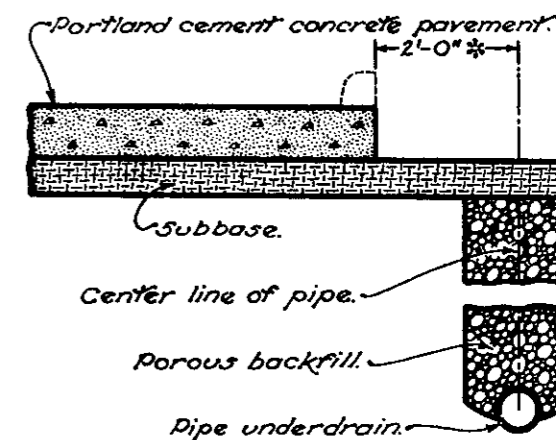
Steel bar 1" min. diameter, length 36", square cut end and ground smooth.

Class "C" concrete.

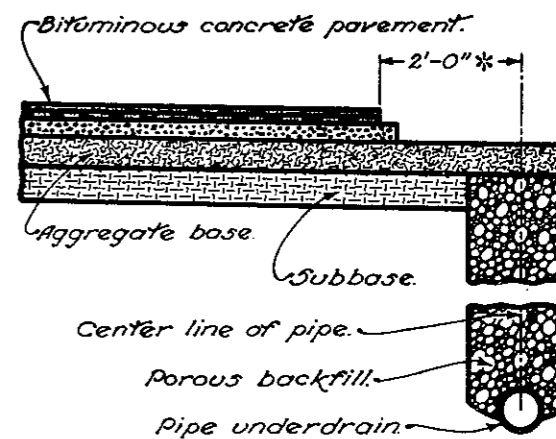
MONUMENT ASSEMBLY SECTION

Cost of furnishing and placing monument box, steel bar and class "C" concrete included in price bid for 604. Monument Assembly.

MONUMENT ASSEMBLY



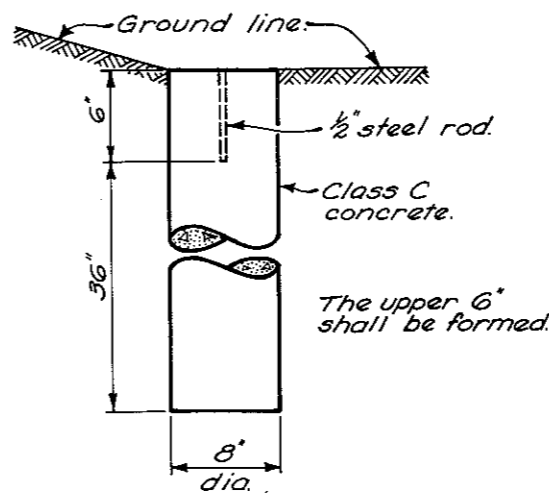
WITH PORTLAND CEMENT CONCRETE PAVEMENT



WITH FLEXIBLE PAVEMENT

PIPE UNDERDRAIN CONSTRUCTION

* Unless otherwise shown on plans.



REFERENCE MONUMENT

BUREAU OF LOCATION AND DESIGN
OHIO DEPARTMENT OF HIGHWAYS

ROADWAY ITEMS

STANDARD CONSTRUCTION DRAWING
APPROVED *R. L. Cuthbert* ENGR. L. & D.

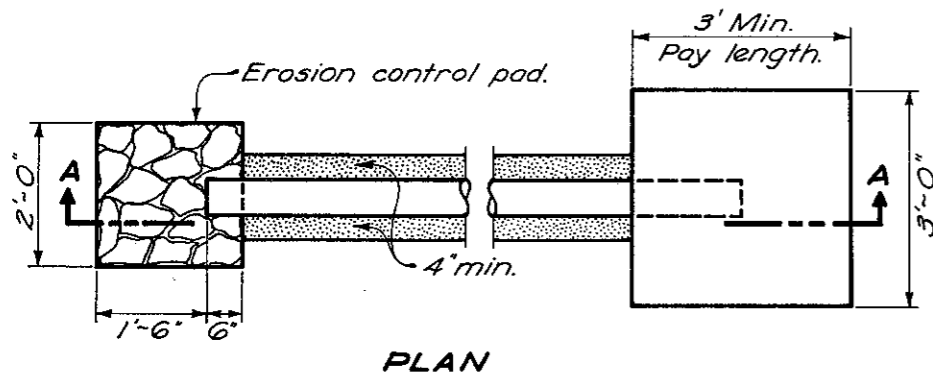
DATE
6-1-65
10-1-67

MC-1

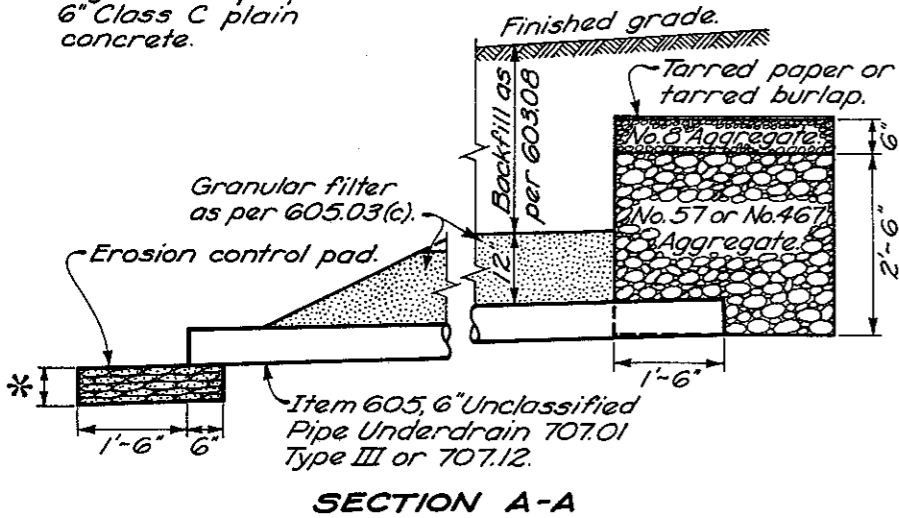
ROADWAY ITEMS

NOTES

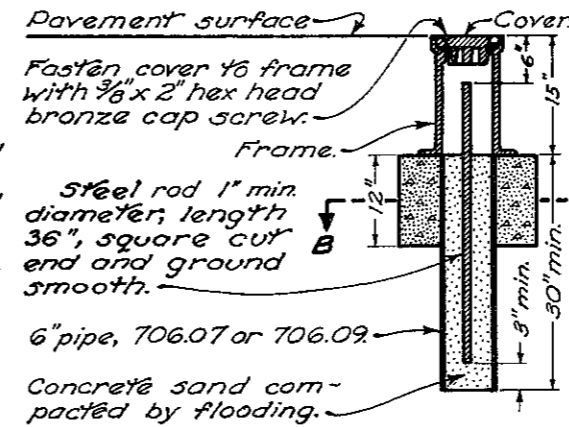
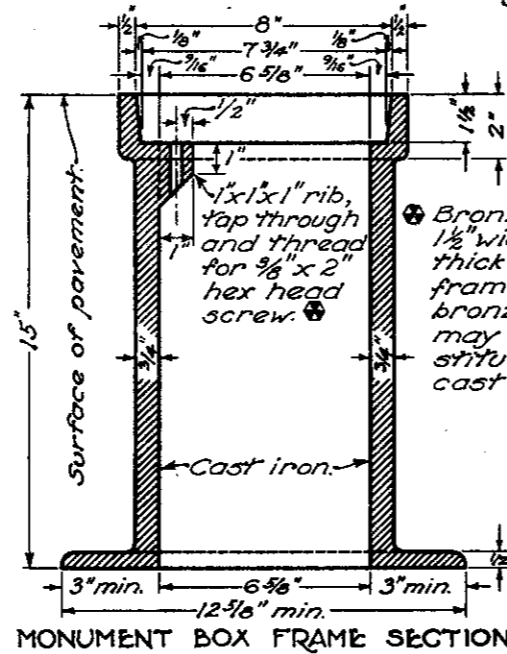
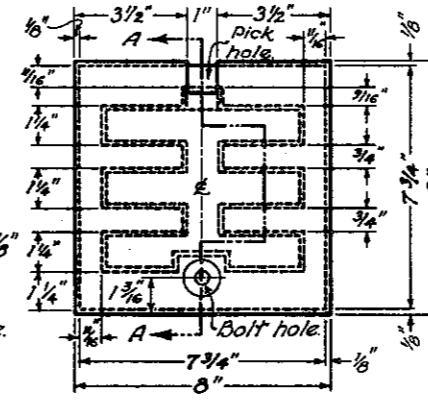
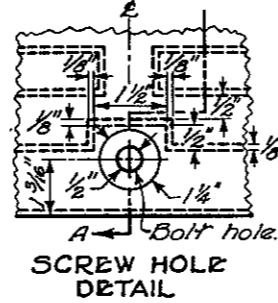
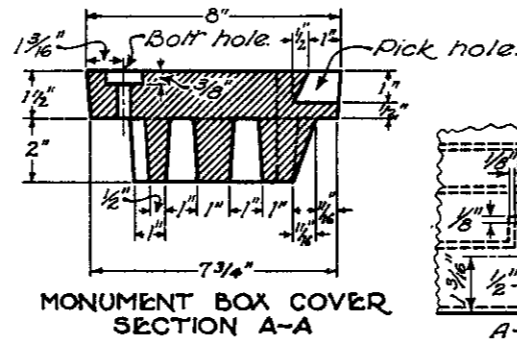
SPRING DRAIN: Aggregates, tarred paper or tarred burlap, erosion control pad, backfill and necessary excavation for spring drains shall be included for payment in the unit price bid per linear foot for Item 605, Aggregate Drains for Springs, as per plan.



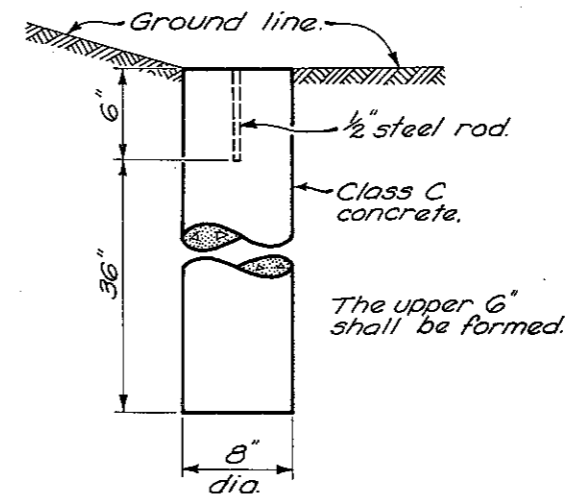
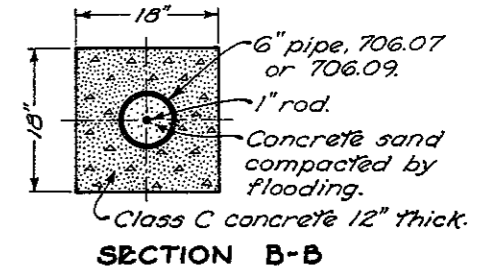
* 9" grouted riprap or 6" Class C plain concrete.



SPRING DRAIN DETAIL



MONUMENT ASSEMBLY
Cost of furnishing and placing monument box, steel rod, class C concrete, concrete sand and pipe included in price bid for 604 Monument Assembly.



BUREAU OF LOCATION AND DESIGN
OHIO DEPARTMENT OF HIGHWAYS

**ROADWAY
ITEMS**

STANDARD
CONSTRUCTION
DRAWING **MC-1**

APPROVED *K. L. B. ENGR.* L. & D.

DATE
6-1-65
10-1-67
6-13-69