

CONCRETE STEPS

NOTES

GENERAL

Top of integral wall shall be located 1 to 3 inches above ground line.

Type A

Railing and post shall be fabricated from nominal size 1 1/2 in., 0.145 in. wall thickness steel pipe meeting the requirements of the Specification for Welded and Seamless Steel Pipe ASTM Designation: A 53 standard weight, Schedule Number 40, or aluminum pipe meeting the requirements of standard Specification for Aluminum-Alloy Pipe ASTM Designation: B 241, 6063 T6 ASA Schedule Number 40.

Steel posts and rails shall be galvanized after fabrication in accordance with ASTM A 123. Splices for steel railing shall be field welded. Areas on which the spelter coating has been damaged by welding or otherwise in fabrication, shall be regalvanized in accordance with AASHTO M 36 Sec. 19 (c) Metalizing Process or they shall be repaired under the direction of the Engineer with stick form galvanizing repair compound meeting the requirements of Federal Specification O-G-93.

The splices for aluminum rail shall be provided with internal sleeves and shall be smooth and water-tight after erection, or they may be welded.

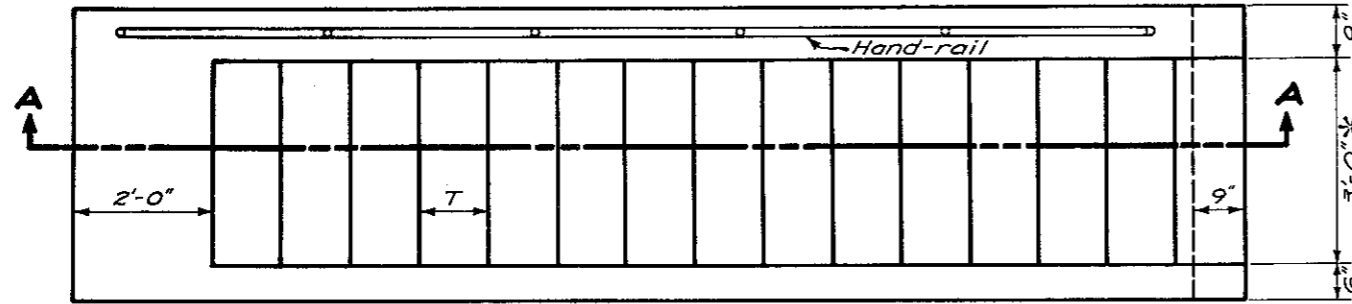
A single railing shall be installed on the right side facing up, unless otherwise shown on the plans.

If required by the plans, railings shall be installed on both sides of the steps, and 9" wide curbs shall be provided on both sides.

Posts shall be cast in-place or set in sockets filled with 1-3 cement mortar. The portion of aluminum posts set in concrete or mortar shall be given a heavy coating of asphalt varnish or coal-tar pitch paint, both inside and outside.

The installed hand-rails shall be free from burrs or sharp projections.

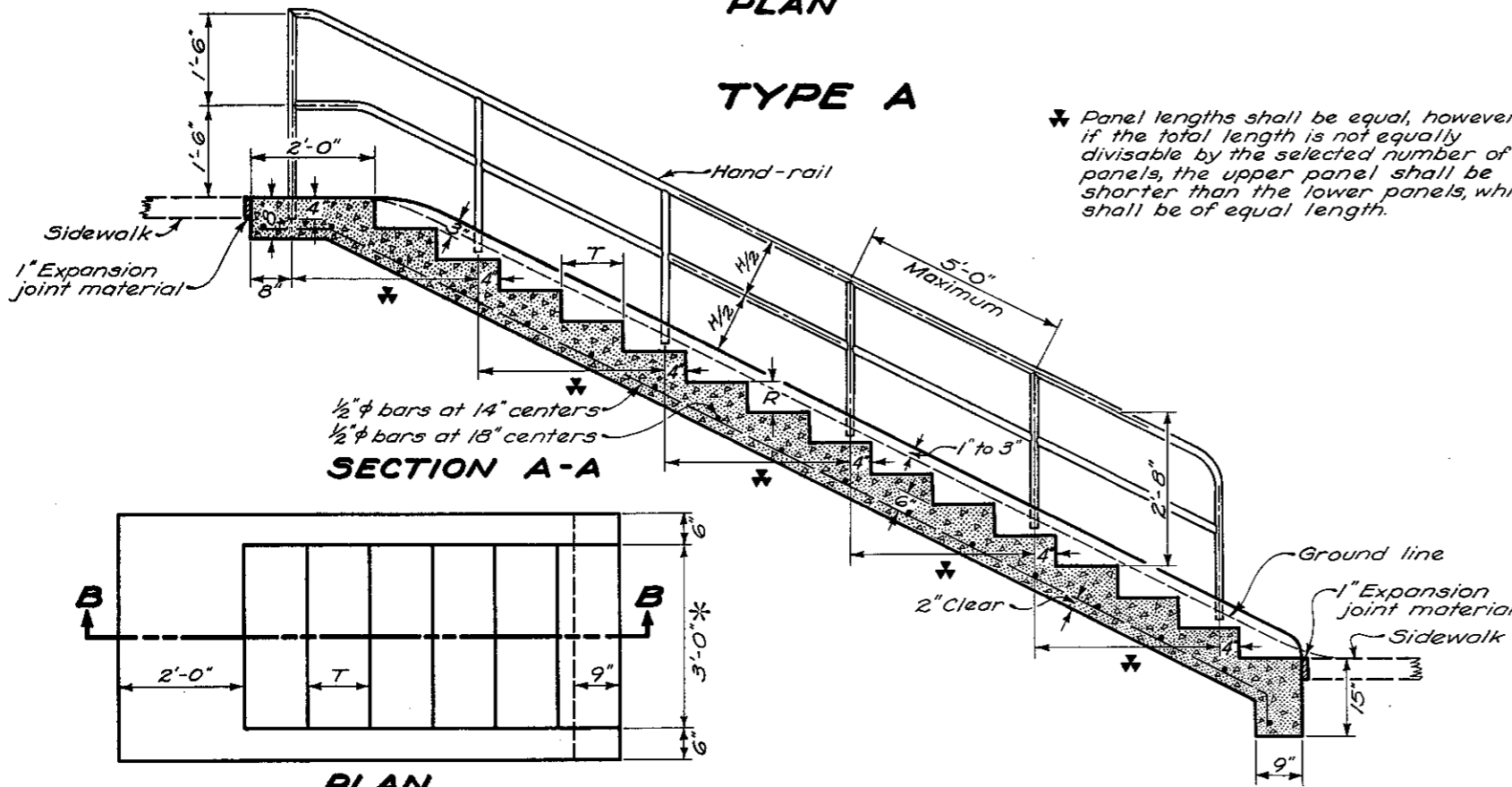
The cost of providing the hand railing shall be included in the price bid for Concrete Steps, Type A, and no separate payment will be made.



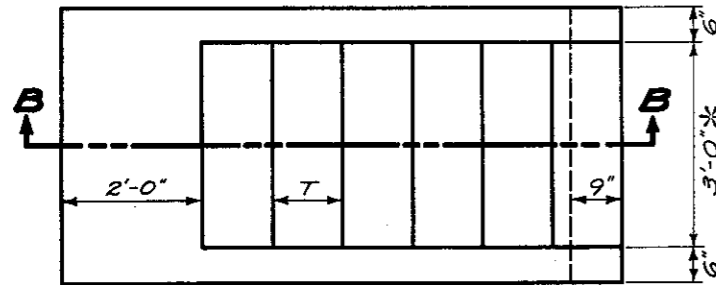
PLAN

TYPE A

* Panel lengths shall be equal, however if the total length is not equally divisible by the selected number of panels, the upper panel shall be shorter than the lower panels, which shall be of equal length.

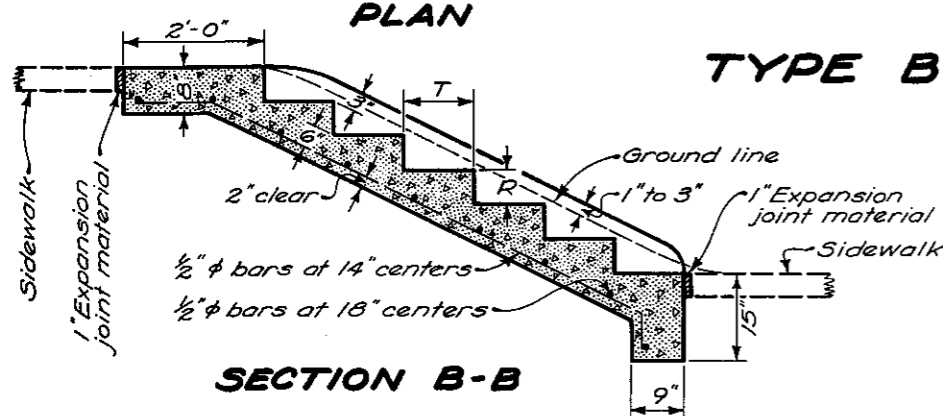


SECTION A-A



PLAN

TYPE B



SECTION B-B

R ~ 5" min., 8" max.
T ~ 10" min., 15" max.

* Unless otherwise shown on plan.

BUREAU OF LOCATION AND DESIGN
OHIO DEPARTMENT OF HIGHWAYS

ROADWAY
ITEMS

DATE
6-1-65

STANDARD
CONSTRUCTION
DRAWING

MC-2

APPROVED *R. L. ...* ENGR. L. & D.

CONCRETE STEPS

NOTES

GENERAL

Top of integral wall shall be located 1 to 3 inches above ground line.

Type A

Railing and post shall be fabricated from nominal size 1 1/2 in., 0.145 in. wall thickness steel pipe meeting the requirements of the Specification for Welded and Seamless Steel Pipe ASTM Designation: A 53 standard weight, Schedule Number 40, or aluminum pipe meeting the requirements of standard Specification for Aluminum-Alloy Pipe ASTM Designation: B 241, 6063 T6 ASA Schedule Number 40.

Steel posts and rails shall be galvanized after fabrication in accordance with ASTM A 123. Splices for steel railing shall be field welded. Areas on which the spelter coating has been damaged by welding or otherwise in fabrication, shall be regalvanized in accordance with AASHTO M 36 Section, 24 Metalizing Process or they shall be repaired under the direction of the Engineer with stick form galvanizing repair compound meeting the requirements of Federal Specification O-G-93.

The splices for aluminum rail shall be provided with internal sleeves and shall be smooth and water-tight after erection, or they may be welded.

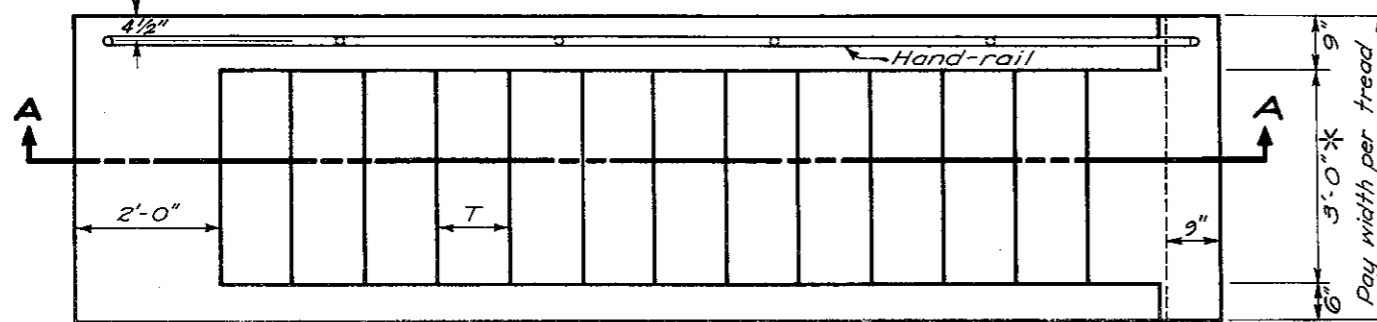
A single railing shall be installed on the right side facing up, unless otherwise shown on the plans.

If required by the plans, railings shall be installed on both sides of the steps, and 9" wide integral walls shall be provided on both sides.

Posts shall be cast in-place or set in sockets filled with 1-3 cement mortar. The portion of aluminum posts set in concrete or mortar shall be given a heavy coating of asphalt varnish or coal-tar pitch paint, both inside and outside.

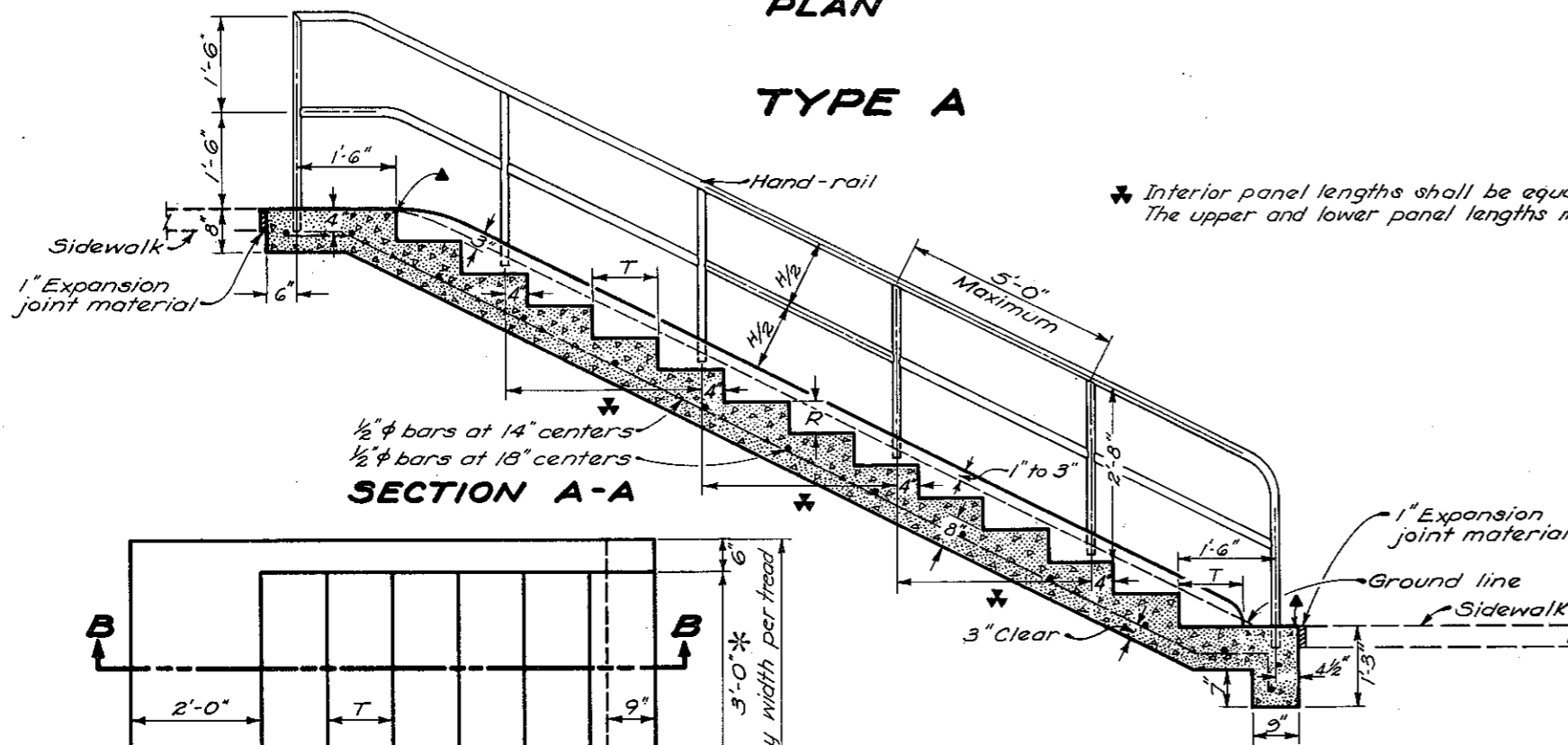
The installed hand-rails shall be free from burrs or sharp projections.

The cost of providing the hand railing shall be included in the price bid for Concrete Steps, Type A, and no separate payment will be made.



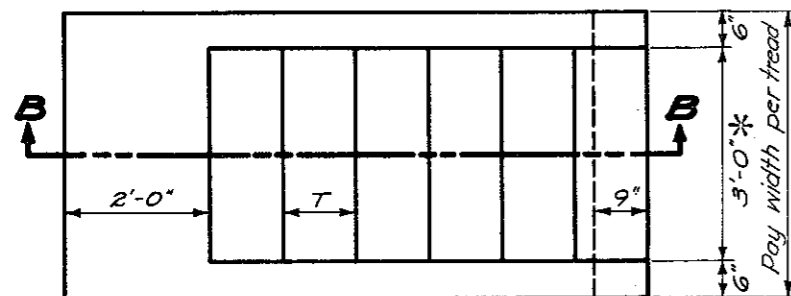
PLAN

TYPE A



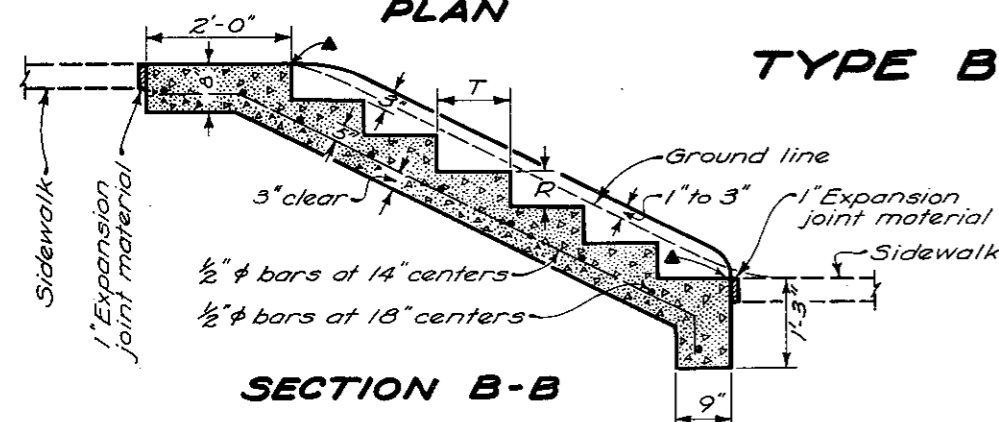
SECTION A-A

* Interior panel lengths shall be equal.
The upper and lower panel lengths may vary.



PLAN

TYPE B



SECTION B-B

R ~ 5" min, 7" max.
T ~ 10" min, 15" max.

All risers shall be of equal height and all treads shall be of equal depth on any one set of steps.

* Unless otherwise shown on plan.

▲ Measurable tread per 608.08

BUREAU OF LOCATION AND DESIGN
OHIO DEPARTMENT OF TRANSPORTATION

CONCRETE
STEPS

DATE
6-1-85
7-7-81

STANDARD
CONSTRUCTION
DRAWING

MC-2

APPROVED: [Signature] ENGR. L. & D.