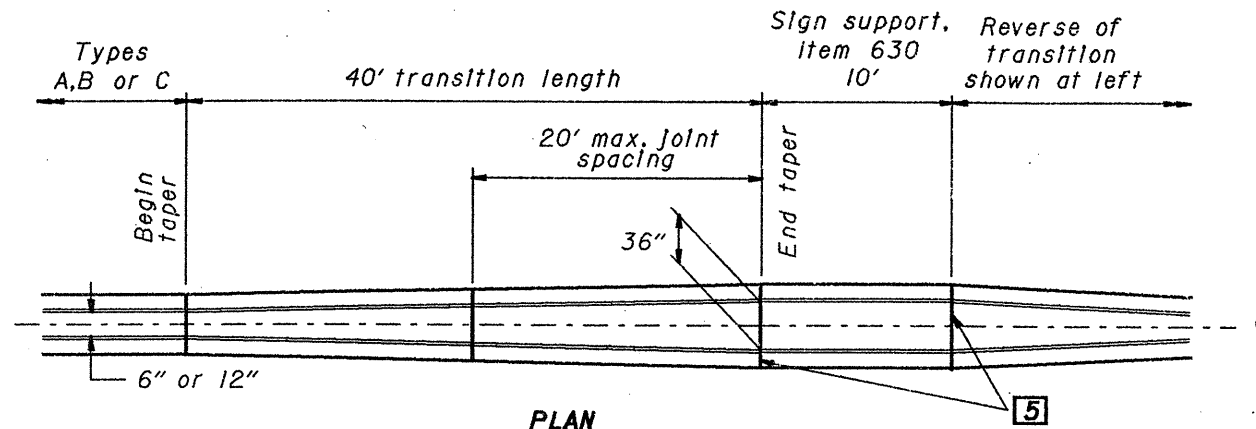


# NOTE

**STANDARD BARRIERS:** Types A, B, or C concrete barriers shall be constructed as per Std. Const. Drwg. MC-9.3 or as detailed in the plans.

# LEGEND

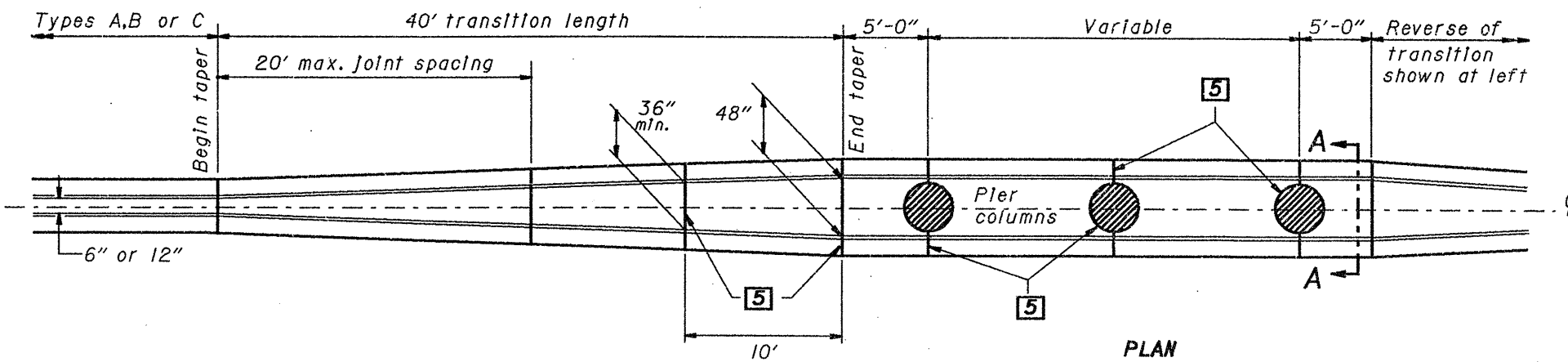
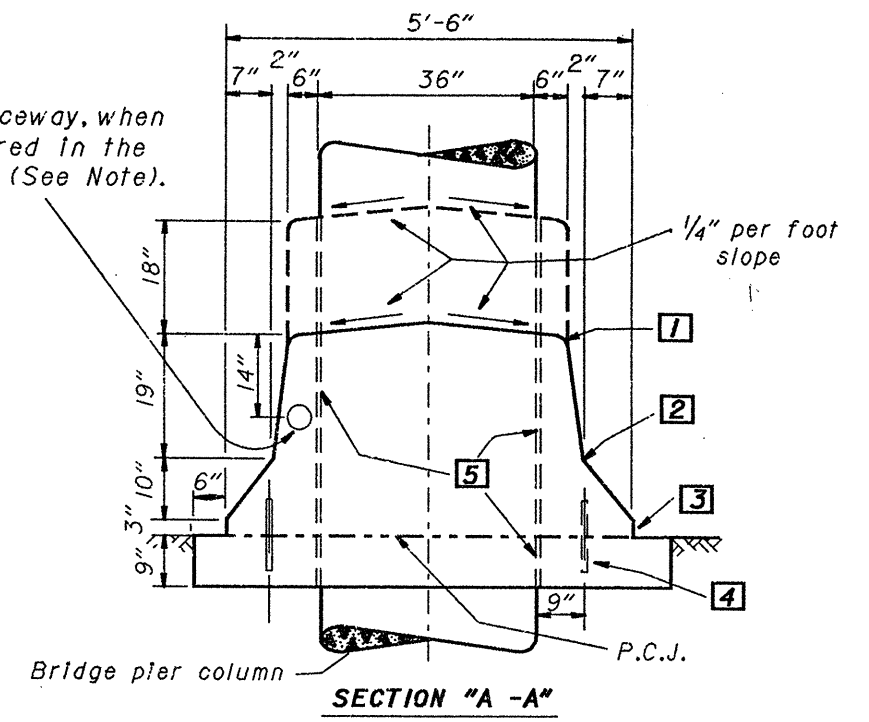
- 1 1" Radius or 3/4" chamfer.
- 2 Permissible 10" radius.
- 3 Permissible 1" radius.
- 4 No. 8 epoxy coated deformed steel bars, 12" long, spaced 2' between successive bars on a staggered (except Type D) pattern. Dowel bars shall begin 4' from the leading edge of the End Terminal. Omit dowels when top is constructed integral with the base.
- 5 Expansion joint, 3/4" min. Preformed Filler 705.03.



## SIGN SUPPORT TRANSITION

(For 50" barriers, the upper 18" varies from 6" or 12" width to 36" width.)

4" Raceway, when required in the plans (See Note).



## BRIDGE PIER TRANSITION

(With Sign Support)

Sign support, Item 630 - If specified in the Plans.

BUREAU OF LOCATION AND DESIGN OHIO DEPARTMENT OF TRANSPORTATION	
<b>CONCRETE BARRIER TRANSITIONS</b>	DATE 10-30-92
STANDARD CONSTRUCTION DRAWING	<b>MC-9.4</b>
APPROVED <i>D.K. Hulman</i> ENGR., L & D	