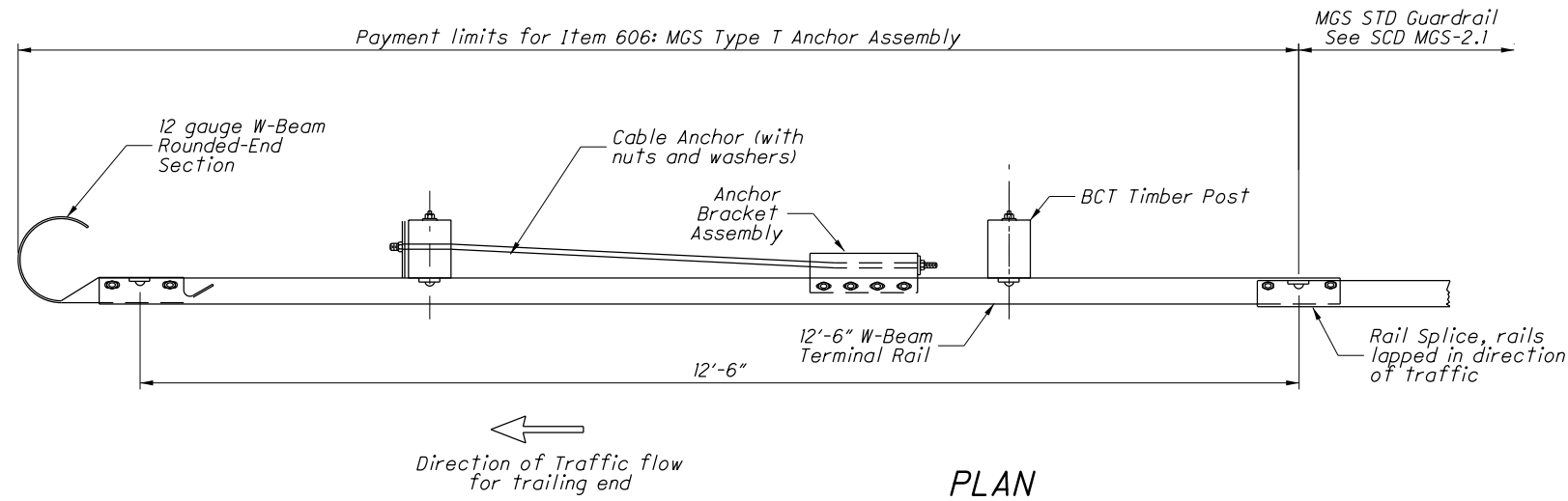
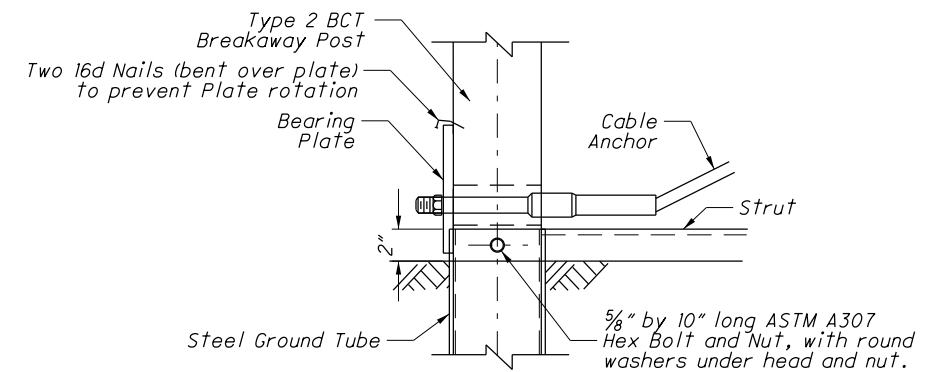
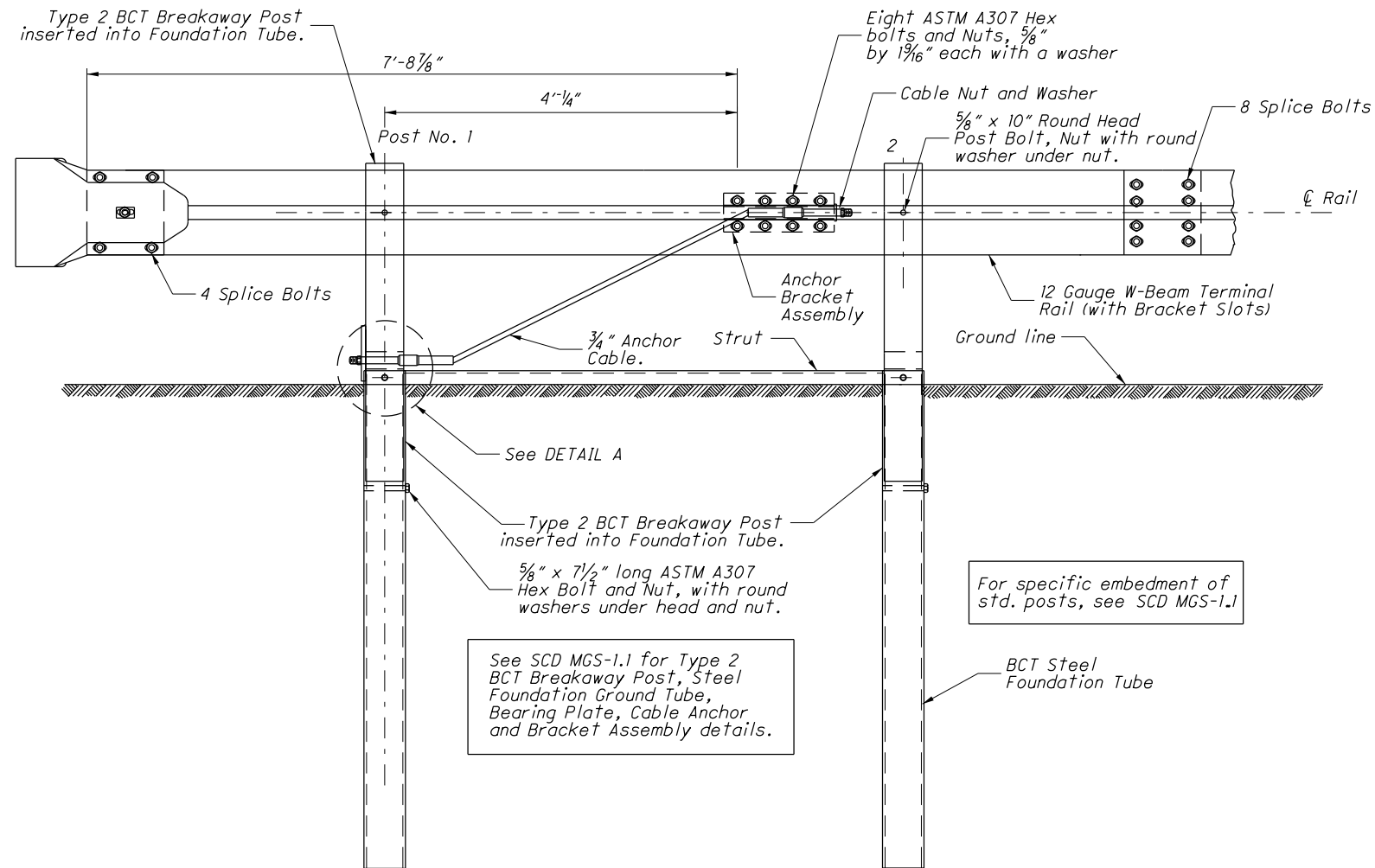


X:\Standards\Publications\SCD\Distributions\scd\_2013-01-18\MGS-4.2\_1-18-2013.dgn 08-JAN-2013 2:57PM mruppe



PLAN



DETAIL A

NOTES

**APPLICATION:** Use Type T Anchor Assemblies on the trailing end of guardrail runs, located outside of the clear zone of opposing traffic. The assembly is 12'-6" long, none of which can be considered the Length of Need for the guardrail run.  
 For termination requirements at driveways, and side road approaches and Terminals at Structures, see Location & Design Manual, Volume 1, Figure 603-3.

**MATERIALS:** See SCD MGS-1.1 for parts used on this anchor, including the Type 2 BCT Breakaway Posts, Steel Ground Foundation Tube, Bearing Plate, Cable Anchor, Bracket Assembly, and Rounded W-Beam End Section.

Bearing Plate is ASTM A709 Grade 36. Steel Ground Foundation Tube shall be ASTM A500, Grade B, and meet CMS 707.10. All angles, channels and plates shall meet CMS 711.01. All structural steel shall be galvanized as specified in CMS 711.02. All bolt washers indicated are standard galvanized steel of the appropriate size.

For components on this anchor that are not detailed on SCD MGS-1.1, see part descriptions in the AASHTO/AGC/ARTBA Standardized Hardware Guide.

**PAYMENT:** All equipment, labor and materials, including the W-Beam Rounded End Section and the W-Beam Terminal Rail for the 12'-6" anchor assembly shall be included in the unit price bid for **Item 606 - Anchor Assembly, Type T, Each.**

THIS IS A NEW DRAWING.

SCD NUMBER

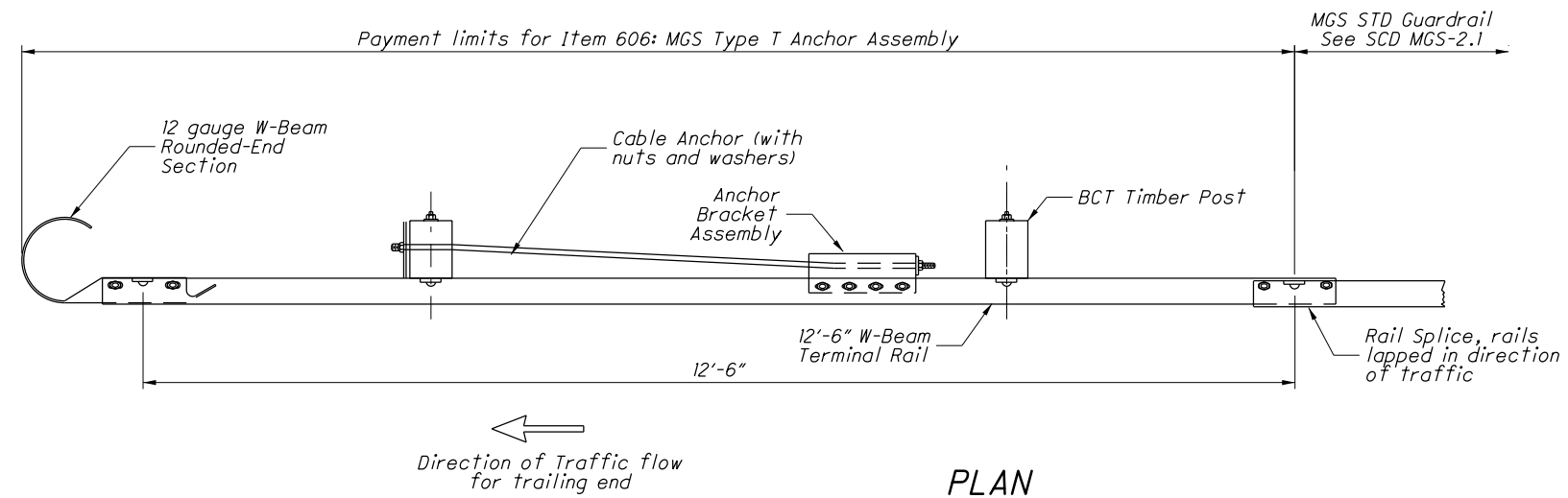
MGS-4.2

STANDARD ROADWAY CONSTRUCTION DRAWING  
 MIDWEST GUARDRAIL SYSTEM,  
 MGS TYPE T ANCHOR ASSEMBLY

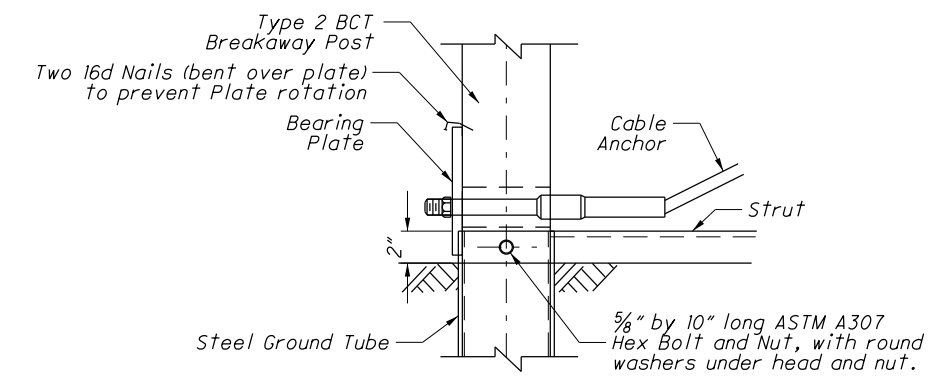
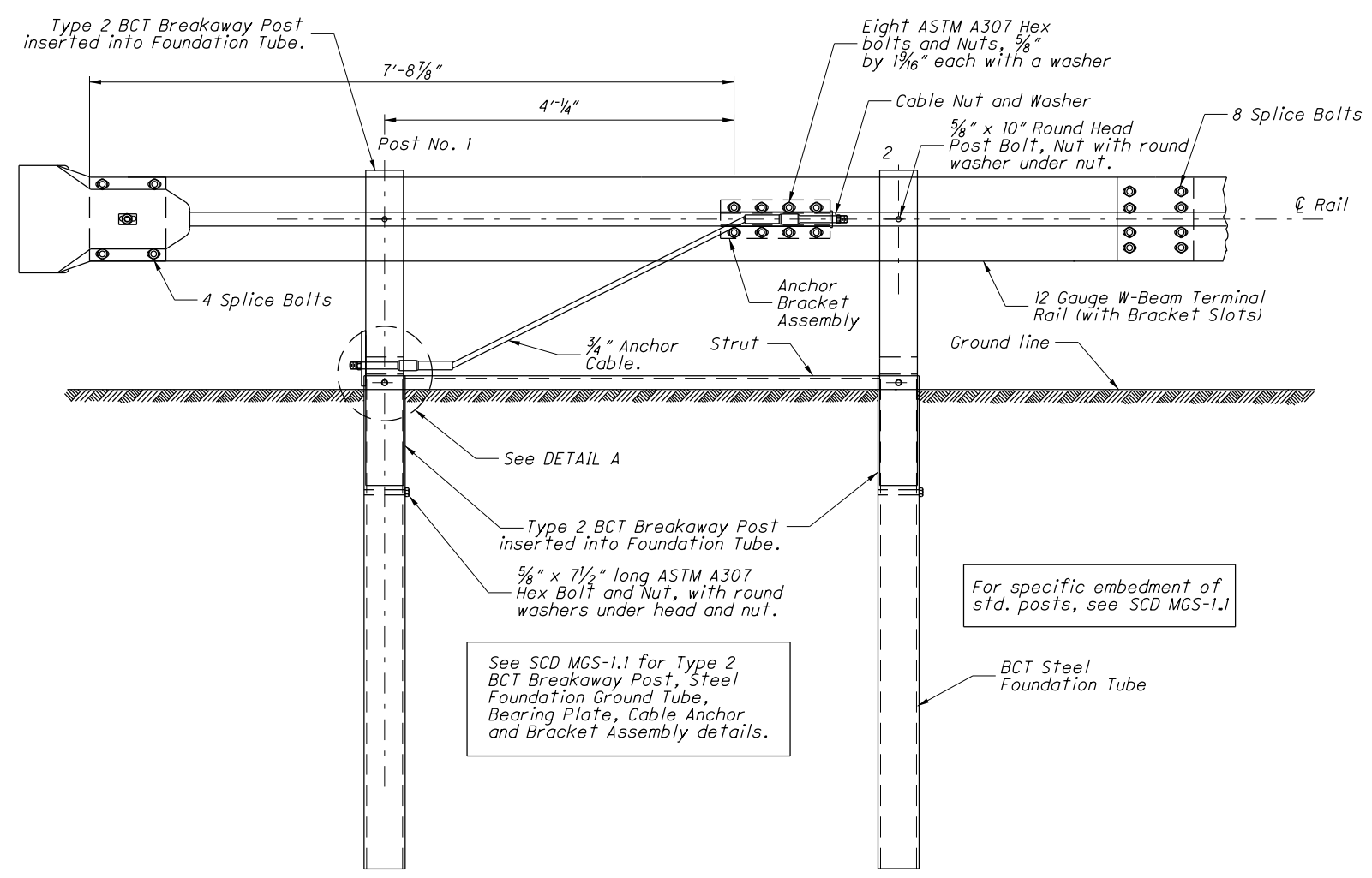
OFFICE OF  
 ROADWAY  
 ENGINEERING

STATUS  
 ENGINEER  
 M. Ruppe

STATE OF OHIO DEPARTMENT OF TRANSPORTATION  
 Michael Blune  
 ADMINISTRATOR  
 DATE  
 1-18-2013



PLAN



DETAIL A

NOTES

**APPLICATION:** Use Type T Anchor Assemblies on the trailing end of guardrail runs, located outside of the clear zone of opposing traffic. The assembly is 12'-6" long, none of which can be considered the Length of Need for the guardrail run.

For termination requirements at driveways, and side road approaches and Terminals at Structures, see Location & Design Manual, Volume 1, Figure 603-3.

**MATERIALS:** See SCD MGS-1.1 for parts used on this anchor, including the Type 2 BCT Breakaway Posts, Steel Ground Foundation Tube, Bearing Plate, Cable Anchor, Bracket Assembly, and Rounded W-Beam End Section.

Bearing Plate is ASTM A709 Grade 36. Steel Ground Foundation Tube shall be ASTM A500, Grade B, and meet CMS 707.10. All angles, channels and plates shall meet CMS 711.01. All structural steel shall be galvanized as specified in CMS 711.02. All bolt washers indicated are standard galvanized steel of the appropriate size.

For components on this anchor that are not detailed on SCD MGS-1.1, see part descriptions in the AASHTO/AGC/ARTBA Standardized Hardware Guide.

**PAYMENT:** All equipment, labor and materials, including the W-Beam Rounded End Section and the W-Beam Terminal Rail for the 12'-6" anchor assembly shall be included in the unit price bid for **Item 606 - Anchor Assembly, MGS Type T, Each.**

THIS DRAWING REPLACES MGS-4.2 DATED 1-18-2013.

SCD NUMBER

**MGS-4.2**

STANDARD ROADWAY CONSTRUCTION DRAWING  
**MIDWEST GUARDRAIL SYSTEM,  
MGS TYPE T ANCHOR ASSEMBLY**

**OFFICE OF  
ROADWAY  
ENGINEERING**

STATUS  
ENGINEER  
M. Ruppe

STATE OF OHIO DEPARTMENT OF TRANSPORTATION  
*Michael Blune*  
ADMINISTRATOR  
DATE  
7-19-2013