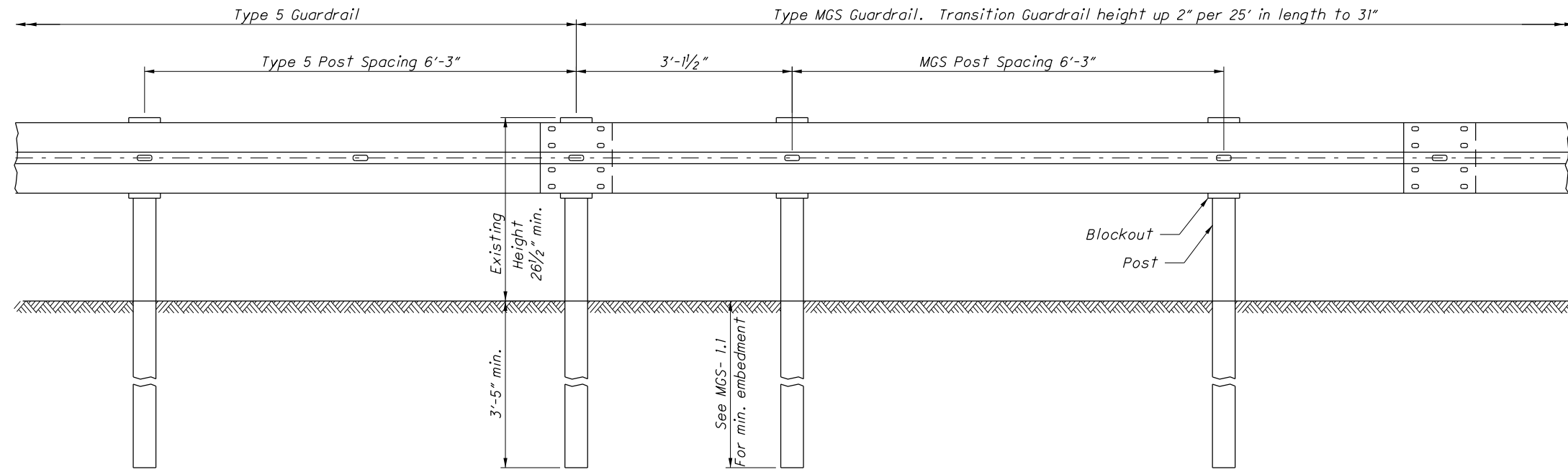
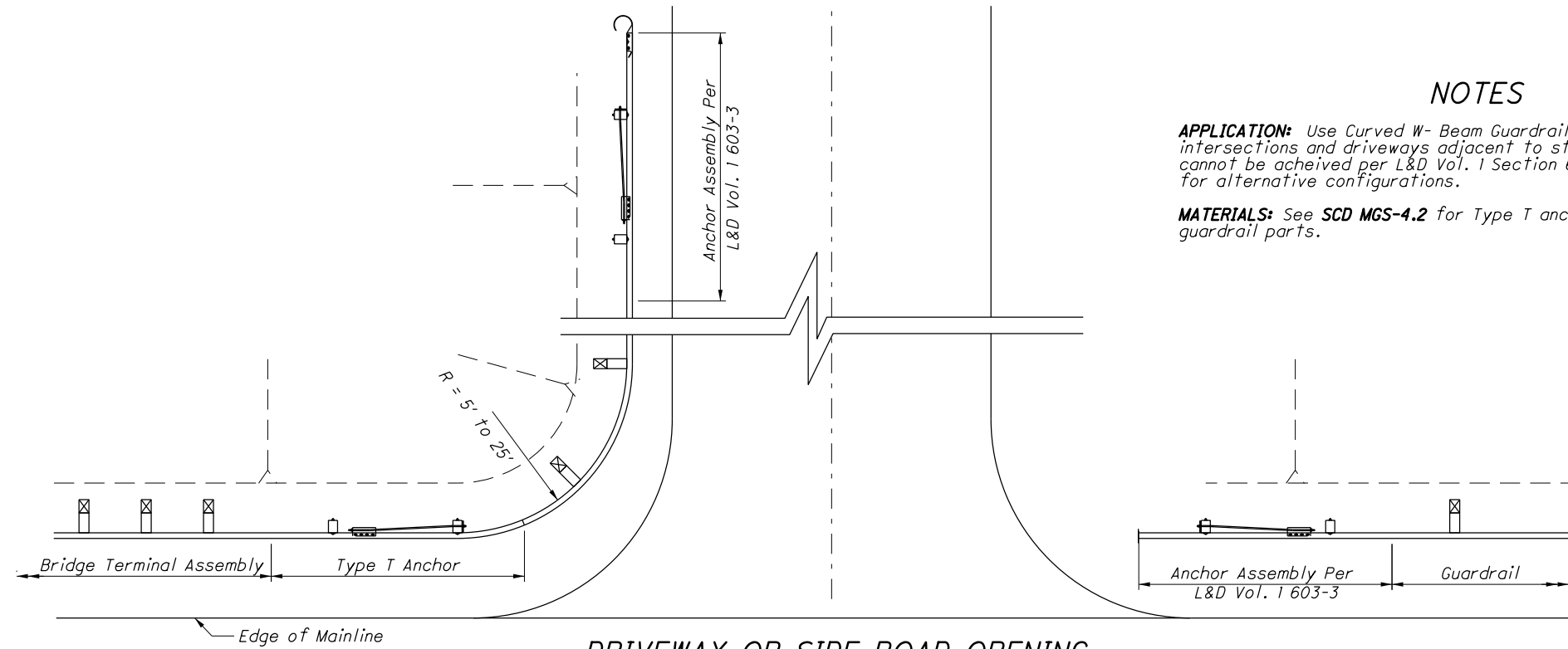


X:\Standards\Publications\SCD\Distributions\scd_2013-01-18\MGS-4.3_1-18-2013.dgn 08-JAN-2013 2:57PM mruppe



TRANSITION BETWEEN TYPE 5 GUARDRAIL AND TYPE MGS GUARDRAIL



DRIVEWAY OR SIDE ROAD OPENING ADJACENT TO STRUCTURES

NOTES

APPLICATION: Use Curved W-Beam Guardrail installations only at at minor roadway intersections and driveways adjacent to structures where Length of Need cannot be achieved per L&D Vol. 1 Section 602. Also see L&D Vol. 1 Figure 603-3 for alternative configurations.

MATERIALS: See SCD MGS-4.2 for Type T anchor assembly, and SCD MGS-1.1 for all guardrail parts.

THIS IS A NEW DRAWING.

SCD NUMBER

MGS-4.3

STANDARD ROADWAY CONSTRUCTION DRAWING
MIDWEST GUARDRAIL SYSTEM
GUARDRAIL TRANSITIONS

OFFICE OF
ROADWAY
ENGINEERING

STATUS
ENGINEER
M. Ruppe

STATE OF OHIO DEPARTMENT OF TRANSPORTATION
Michael Blune 1-18-2013
ADMINISTRATOR DATE