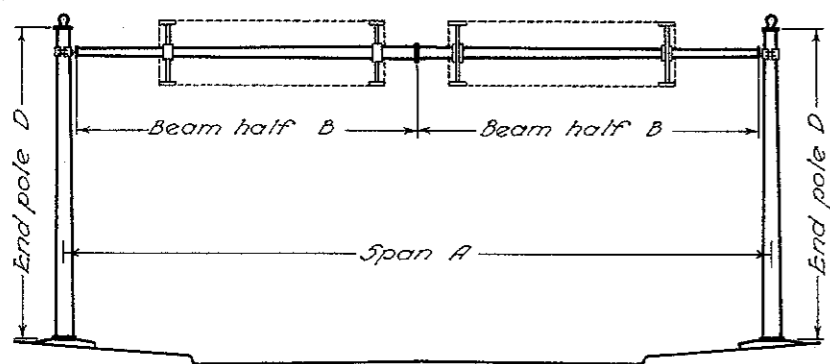
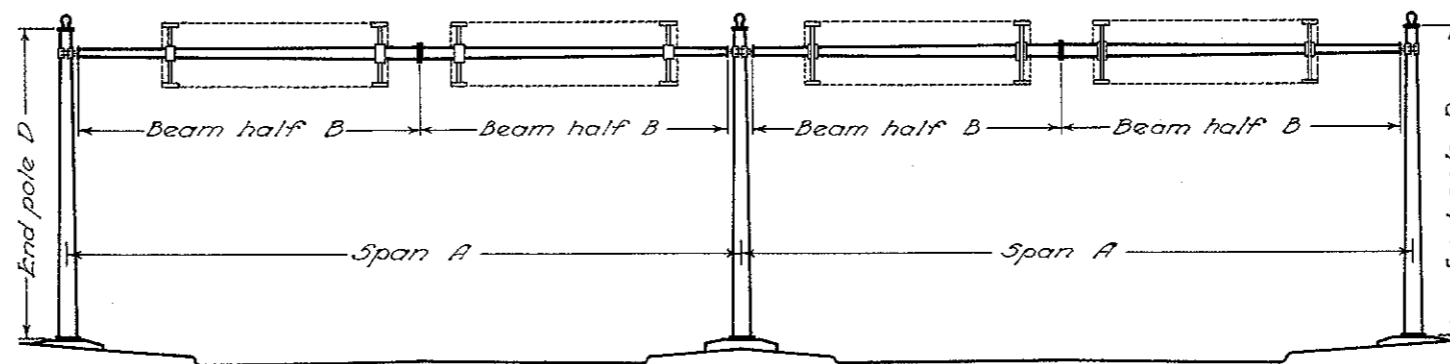


# BRIDGE TYPE OVERHEAD SIGN

## TYPE A



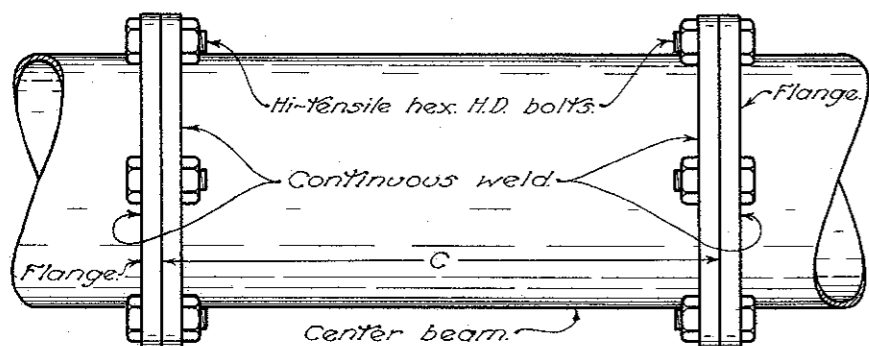
## TYPE B



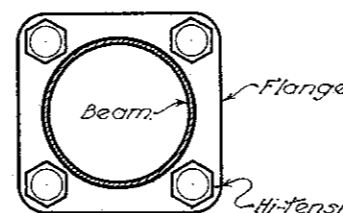
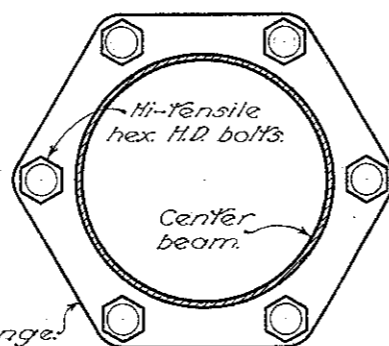
SPAN A	BEAM HALF B FOR MAXIMUM SPAN	CENTER SECTION C	END POLES D	BOLT CIRCLE	S	P	T	ROD DIA.
31'-4" THRU 41'-3"	3 GA. 8.8" X 6" X 20'		3 GA. 10" X 7.2" X 20'	13 1/2"	14 1/8"	3"	1 1/2"	1 1/2"
41'-4" THRU 51'-3"	3 GA. 9.5" X 6" X 25'		3 GA. 10" X 7.2" X 20'	13 1/2"	14 1/8"	3"	1 1/2"	1 1/2"
51'-4" THRU 61'-3"	3 GA. 10" X 5.8" X 30'		3 GA. 10" X 7.2" X 20'	13 1/2"	14 1/8"	3"	1 1/2"	1 1/2"
61'-4" THRU 71'-5"	7 GA. 14" X 9.1" X 35'		3 GA. 12" X 9.2" X 20'	16"	17"	3 3/4"	2"	1 3/4"
71'-6" THRU 81'-5"	7 GA. 16" X 10.4" X 40'		3 GA. 12" X 9.2" X 20'	16"	17"	3 3/4"	2"	1 3/4"
81'-6" THRU 91'-5"	7 GA. 16" X 10.4" X 40'	16" O.D. X 5/16" WALL TUBE X 10'	3 GA. 12" X 9.2" X 20'	16"	17"	3 3/4"	2"	1 3/4"
91'-6" THRU 101'-8"	7 GA. 16" X 10.4" X 40'	16" O.D. X 5/16" WALL TUBE X 20'	3 GA. 12" X 9.2" X 20'	16"	17"	3 3/4"	2"	1 3/4"

### NOTES

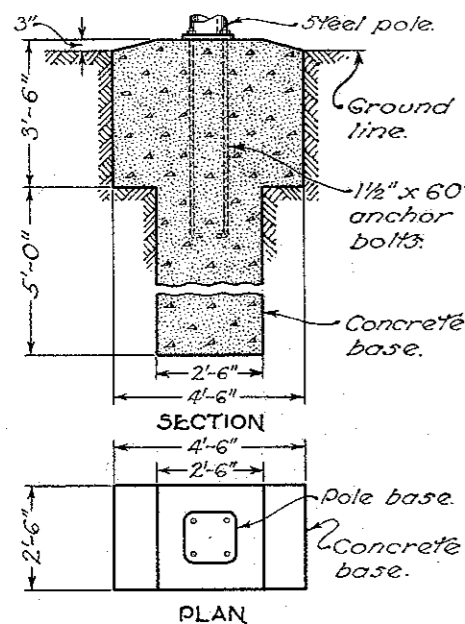
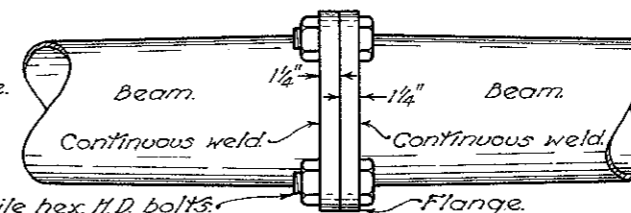
**GENERAL:**—Signs are to be furnished and erected by others.  
 Maximum sign area is 100 sq. ft. and a weight of 500 lbs. applied at the center of the beam.  
 All steel poles and cross beam members shall have a minimum taper of 0.14" per lined foot. The cross beams shall be pre-cambered to eliminate sag.  
**FOUNDATIONS:**—Pole foundations shall be Class E concrete, using #4 aggregate, constructed in accordance with the details shown.  
 The concrete construction shall be in accordance with Item 5-1 except that holes shall be excavated to neat lines and the concrete poured without forms to within 6" of the top of the foundation. The upper 6" shall be properly formed in accordance with Sec. 5-1.05. The lower 5' may be constructed cylindrical in shape using a minimum diameter of 2'-6".  
 Anchor rods shall be accurately held in place until the concrete has set.  
 Foundation details are for average soil conditions (medium clay). Where the stability of the foundation is impaired by a poor soil condition, the details may vary accordingly.  
**PAINTING:**—The shop coats of paint for the sign standards shall be applied in accordance with Sec. 5-25.10.  
 The finished field paint shall be one coat of high grade weather resistant dark green paint, meeting S.S. M-109.23, applied in accordance with Sec. 5-8.05.



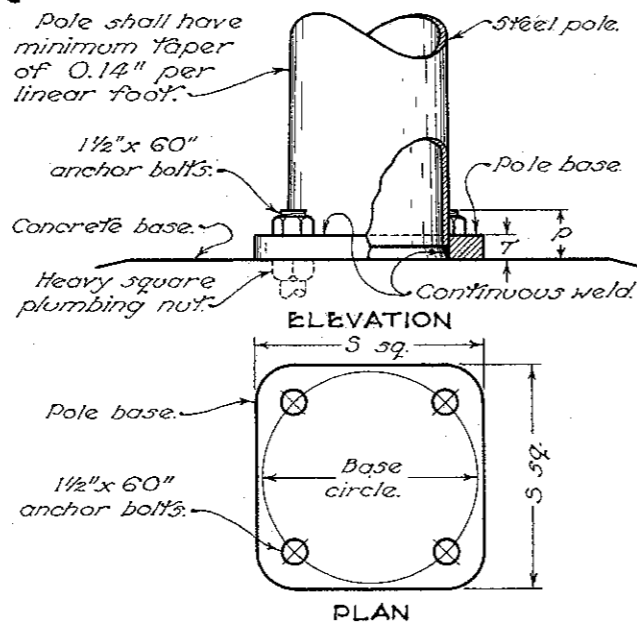
**CENTER SECTION DETAIL**



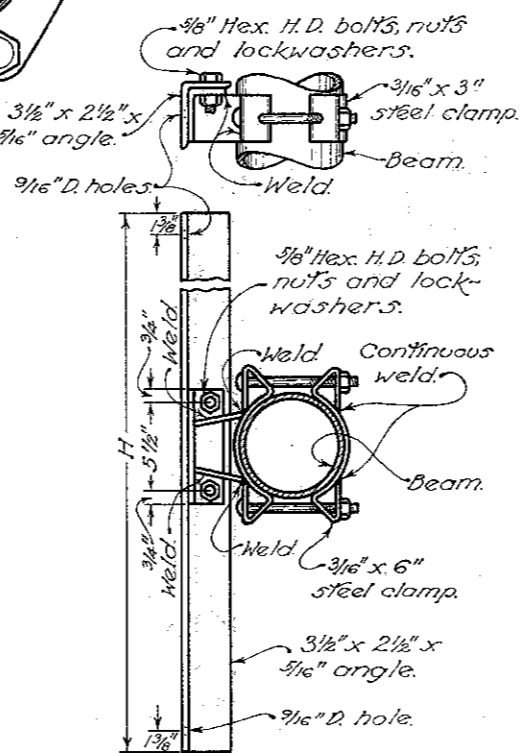
**BEAM SPLICE DETAIL**



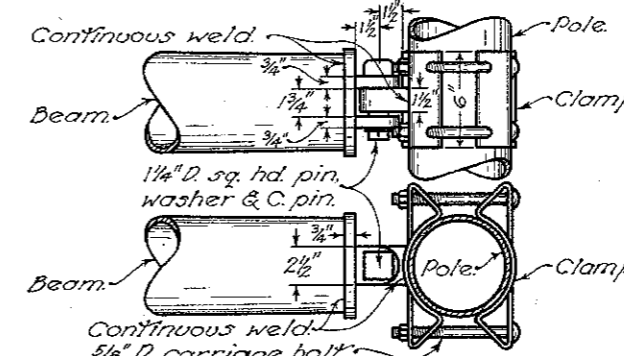
**BASE DETAIL**



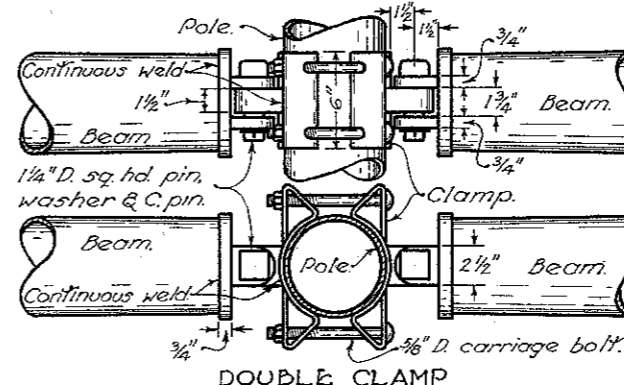
**POLE DETAIL**



**SIGN SUPPORT DETAIL**



**SINGLE CLAMP**



**DOUBLE CLAMP**

BUREAU OF LOCATION AND DESIGN  
OHIO DEPARTMENT OF HIGHWAYS

OVERHEAD  
SIGNS

DATE:  
7-1-55

---

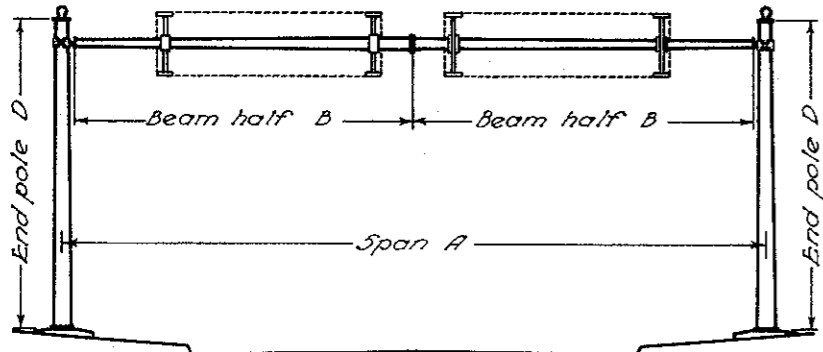
STANDARD  
CONSTRUCTION  
DRAWING

OS-2

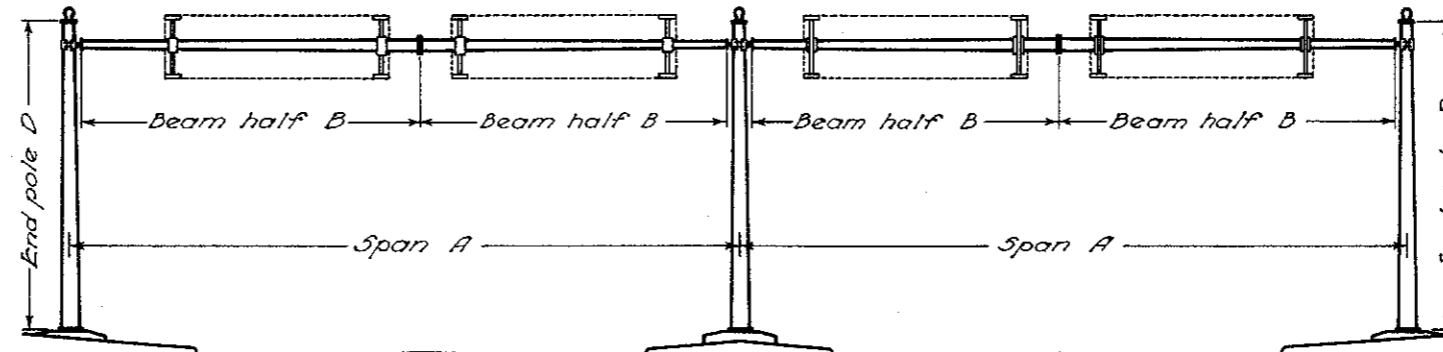
APPROVED *K.L.R.* ENGR. L. & D.

# BRIDGE TYPE OVERHEAD SIGN

## TYPE A



## TYPE B



SPAN A	BEAM HALF B FOR MAXIMUM SPAN	CENTER SECTION C	END POLES D	BOLT CIRCLE	S	P	T	ROD DIA.
3'-4" THRU 4'-3"	3 GA. 8.8" X 6" X 20'		3 GA. 10" X 7.2" X 20'	13 1/2"	14 1/8"	3"	1 1/2"	1 1/2"
4'-4" THRU 5'-3"	3 GA. 9.5" X 6" X 25'		3 GA. 10" X 7.2" X 20'	13 1/2"	14 1/8"	3"	1 1/2"	1 1/2"
5'-4" THRU 6'-3"	3 GA. 10" X 5.8" X 30'		3 GA. 10" X 7.2" X 20'	13 1/2"	14 1/8"	3"	1 1/2"	1 1/2"
6'-4" THRU 7'-5"	7 GA. 14" X 9.1" X 35'		3 GA. 12" X 9.2" X 20'	16"	17"	3 3/4"	2"	1 3/4"
7'-6" THRU 8'-5"	7 GA. 16" X 10.4" X 40'		3 GA. 12" X 9.2" X 20'	16"	17"	3 3/4"	2"	1 3/4"
8'-6" THRU 9'-5"	7 GA. 16" X 10.4" X 40'	16" O.D. X 5/16" WALL TUBE X 10'	3 GA. 12" X 9.2" X 20'	16"	17"	3 3/4"	2"	1 3/4"
9'-6" THRU 10'-5"	7 GA. 16" X 10.4" X 40'	16" O.D. X 5/16" WALL TUBE X 20'	3 GA. 12" X 9.2" X 20'	16"	17"	3 3/4"	2"	1 3/4"

## NOTES

**GENERAL:**—Signs are to be furnished and erected by others. Maximum sign area is 100 sq. ft. and a weight of 500 lbs. applied at the center of the beam.

All steel poles and cross beam members shall have a minimum taper of 0.14" per lined foot. The cross beams shall be pre-cambered to eliminate sag.

**FOUNDATIONS:**—Pole foundations shall be Class E concrete, using #4 aggregate, constructed in accordance with the details shown.

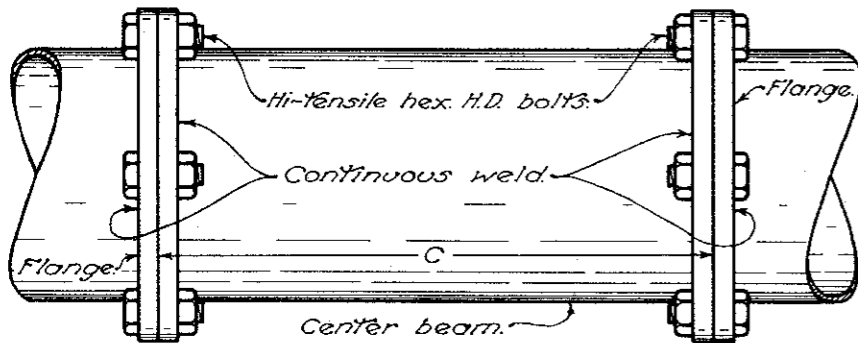
The concrete construction shall be in accordance with Item 5-1 except that holes shall be excavated to neat lines and the concrete poured without forms to within 6" of the top of the foundation. The upper 6" shall be properly formed in accordance with Sec. 5-1.05. The lower 5' may be constructed cylindrical in shape using a minimum diameter of 2'-6".

Anchor rods shall be accurately held in place until the concrete has set.

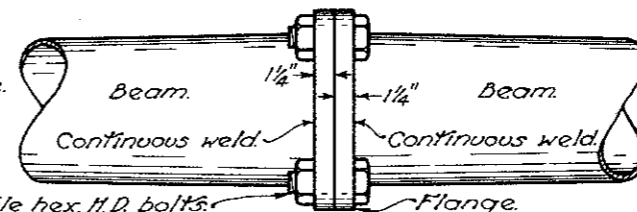
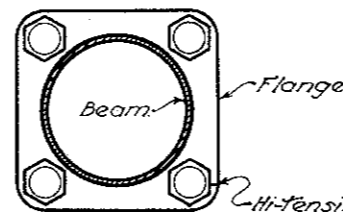
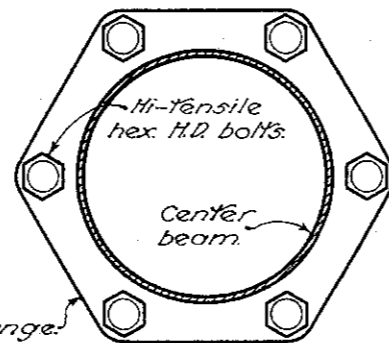
Foundation details are for average soil conditions (medium clay). Where the stability of the foundation is impaired by a poor soil condition, the details may vary accordingly.

**PAINTING:**—Two shop coats of paint for the sign standards shall be applied in accordance with Sec. 5-2.5.10.

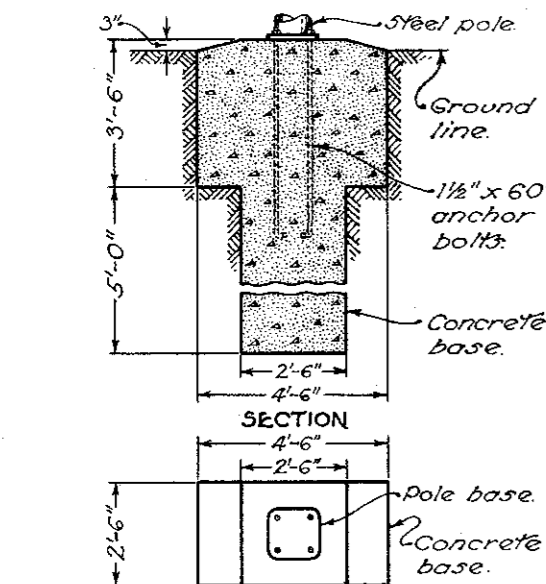
After the standards have been erected they shall be given two field coats of Green Enamel, Sec. M-9.2.3, in accordance with provisions of Item 5-8.



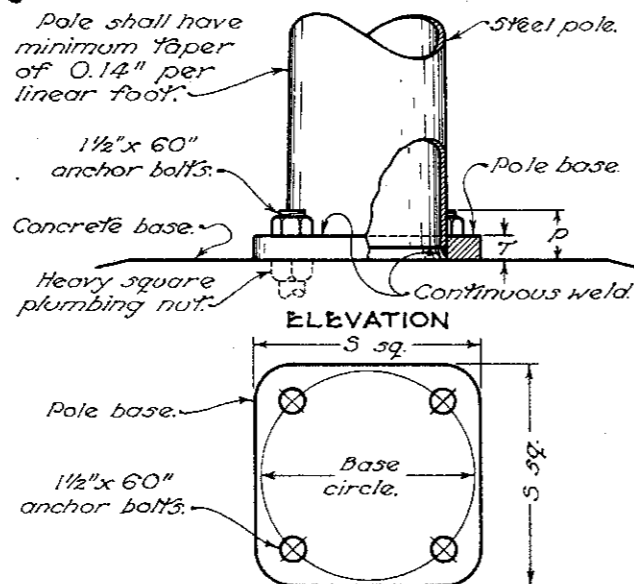
### CENTER SECTION DETAIL



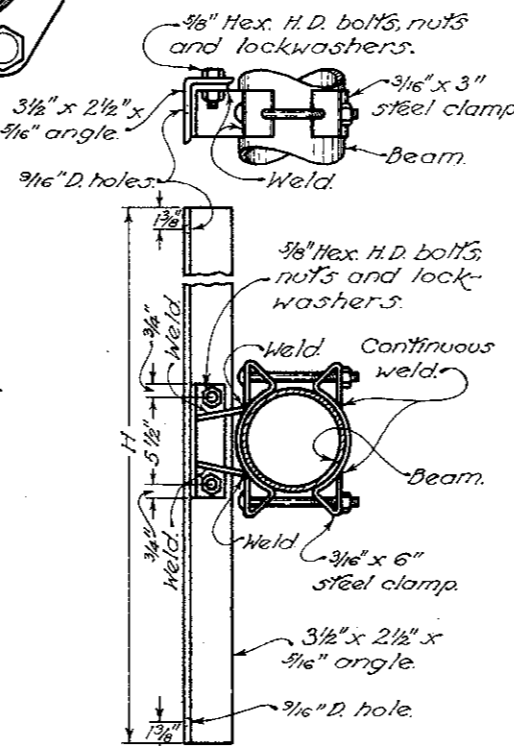
### BEAM SPLICE DETAIL



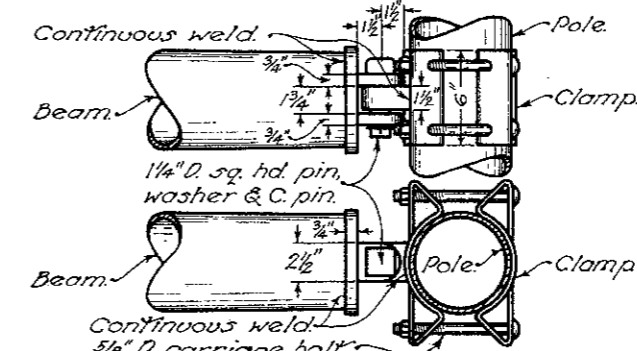
### BASE DETAIL



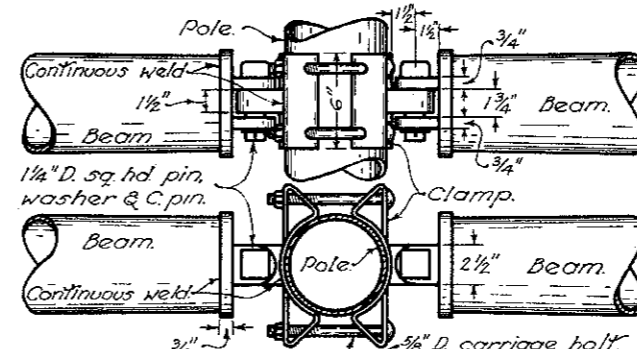
### POLE DETAIL



### SIGN SUPPORT DETAIL



### SINGLE CLAMP



### DOUBLE CLAMP

BUREAU OF LOCATION AND DESIGN  
OHIO DEPARTMENT OF HIGHWAYS

**OVERHEAD SIGNS**

STANDARD CONSTRUCTION DRAWING **OS-2**

APPROVED *[Signature]* ENGR. L. & D.

DATE 7-1-55  
12-17-56