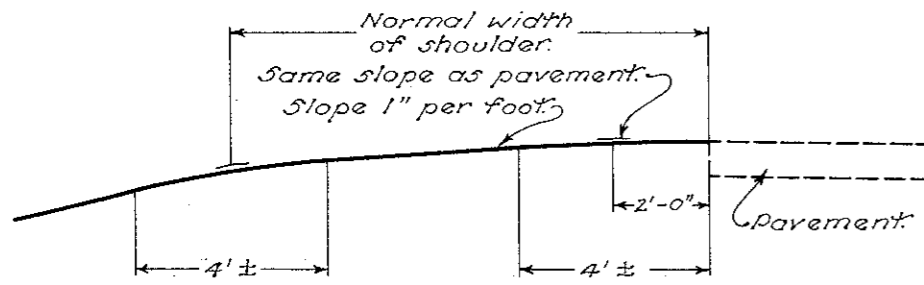
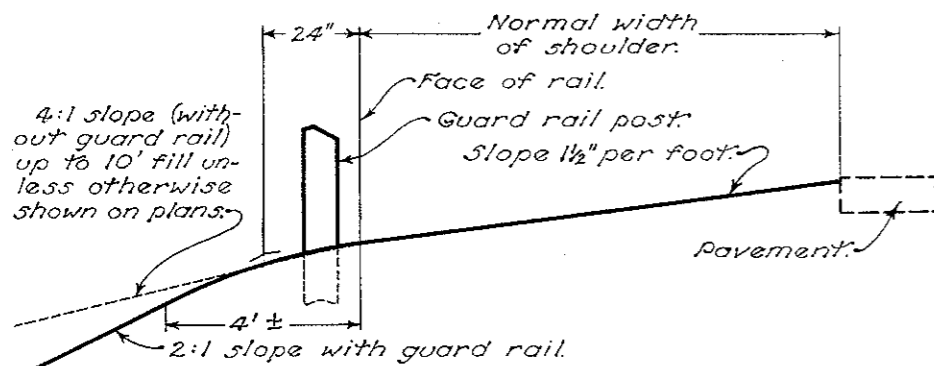


# ROADWAY ITEMS



All angles at change of slope shall be rounded as shown.

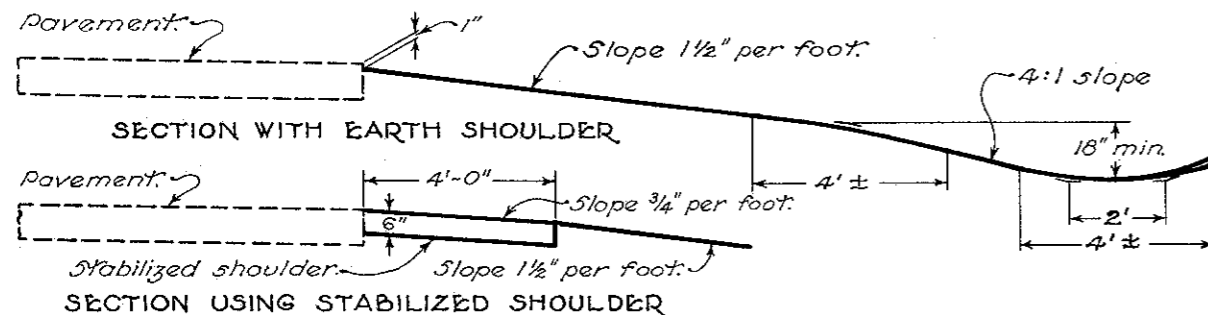
**SHOULDER TREATMENT ON HIGH SIDE OF SUPERELEVATED CURVES**



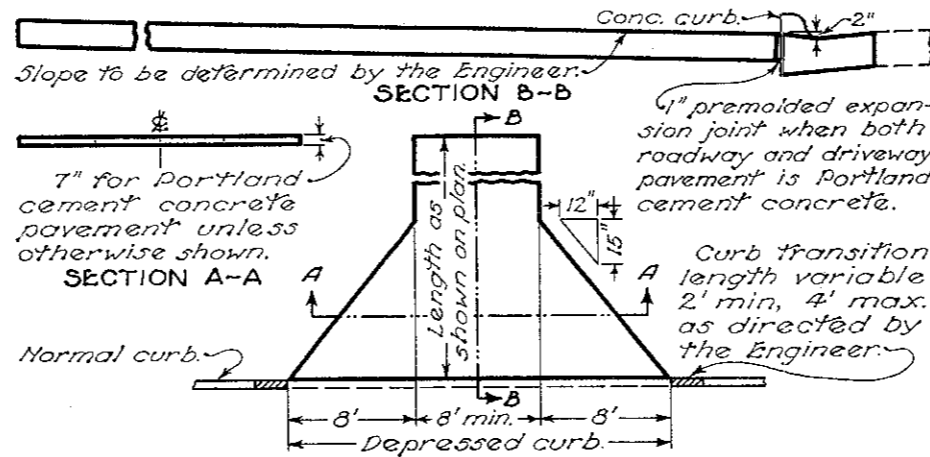
Shoulders shall be constructed 2 feet wider than the normal section where guard rail is required.  
Angle at change of slope shall be rounded as shown.

**LOCATION OF GUARD RAIL**

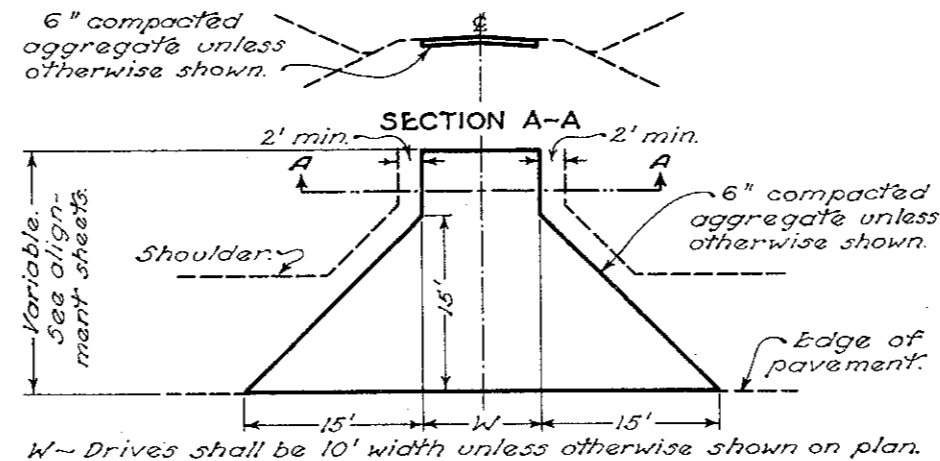
Shoulders at the edges of all pavement without curbs shall be finished 1 inch below pavement edge except on the high side of superelevated curves.  
When a stabilized shoulder is constructed adjacent to the pavement, it shall be finished flush with the pavement surface.



**NORMAL SHOULDER AND DITCH CONSTRUCTION**

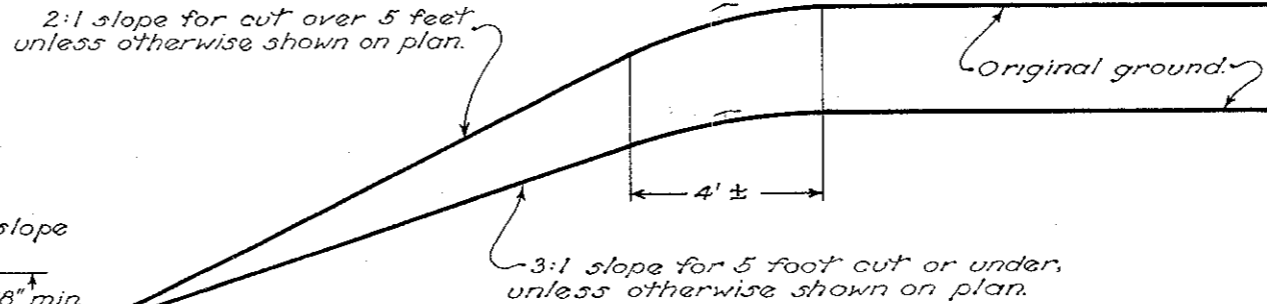


**TYPICAL PAVED DRIVEWAY**



**TYPICAL AGGREGATE DRIVE**

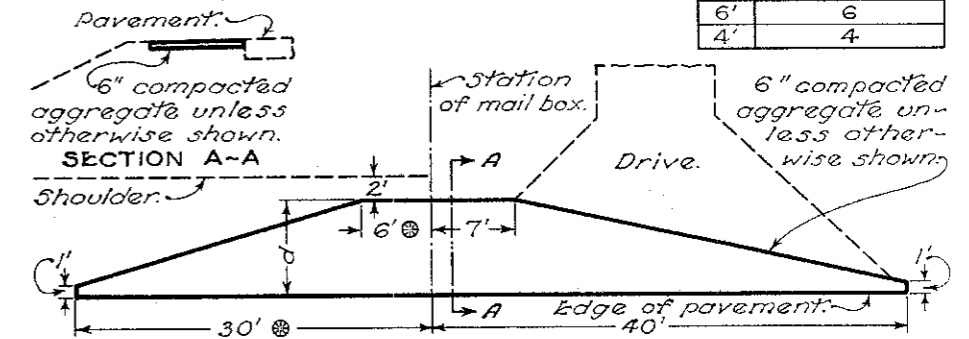
W - Drives shall be 10' width unless otherwise shown on plan.



All angles at change of slope shall be rounded as shown.

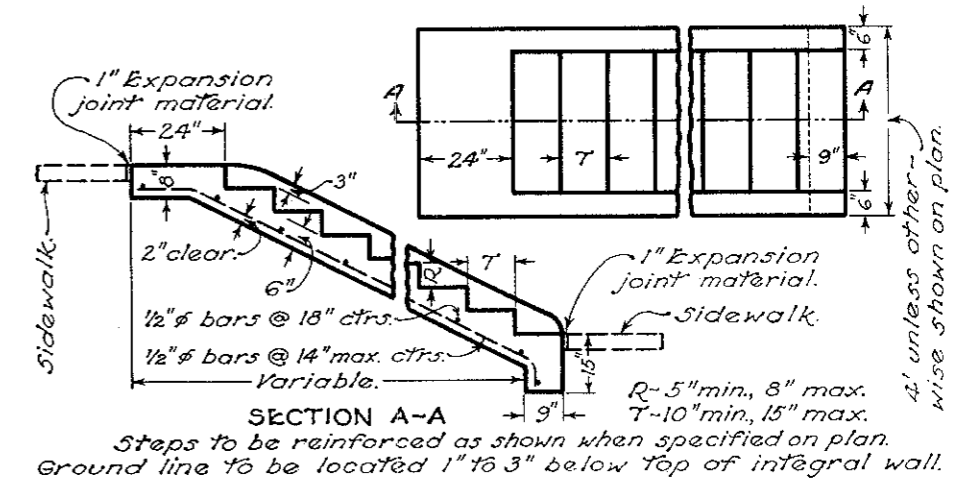
Where feasible drives shall be combined with Mail Box Turnouts as shown by dashed lines and the quantities adjusted by Engineer.

d	AGGREGATE CU. YDS.
8'	8
6'	6
4'	4



d - Determined by width of shoulder.  
Add 2 feet for each additional mail box.

**TYPICAL MAIL BOX TURNOUT**



**CONCRETE STEPS**

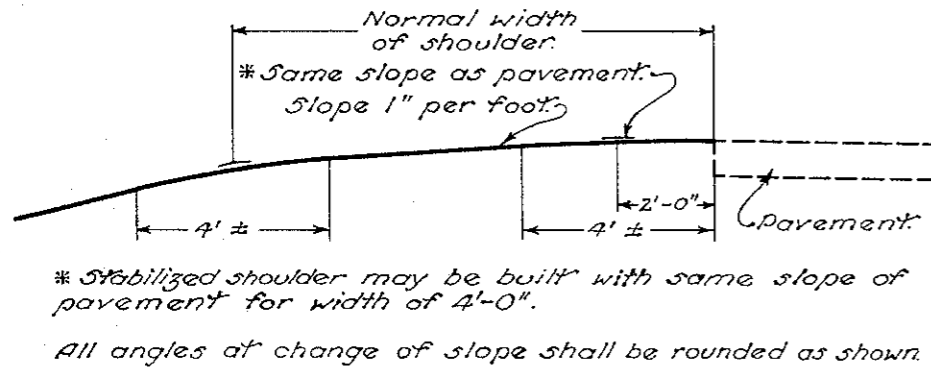
BUREAU OF LOCATION AND DESIGN  
OHIO DEPARTMENT OF HIGHWAYS

## ROADWAY ITEMS

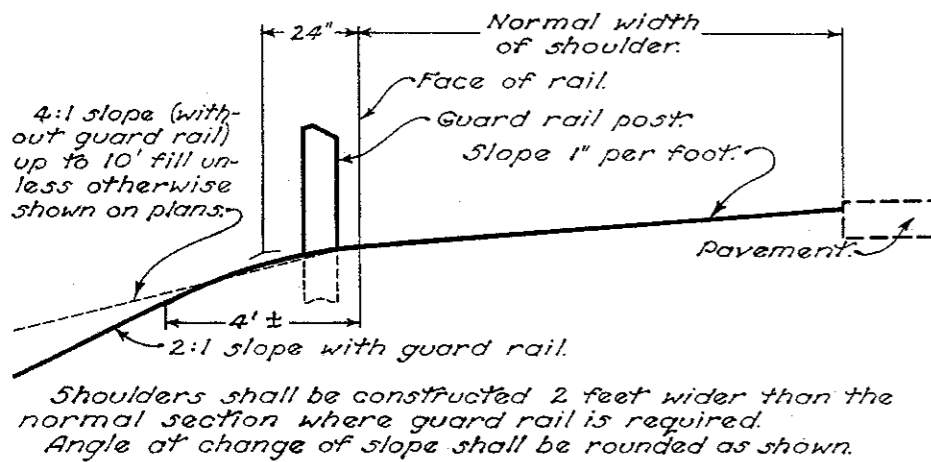
STANDARD CONSTRUCTION DRAWING  
APPROVED *[Signature]* CHIEF ENGINEER

DATE: 5-16-51

# ROADWAY ITEMS

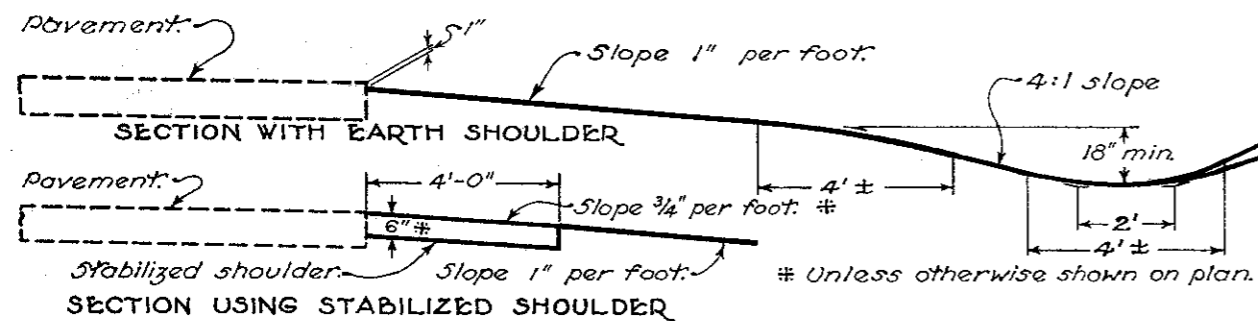


**SHOULDER TREATMENT ON HIGH SIDE OF SUPERELEVATED CURVES**

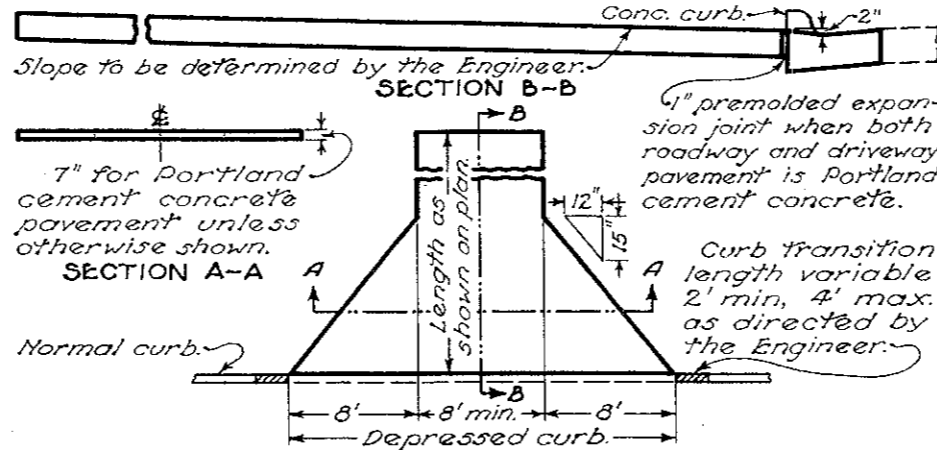


**LOCATION OF GUARD RAIL**

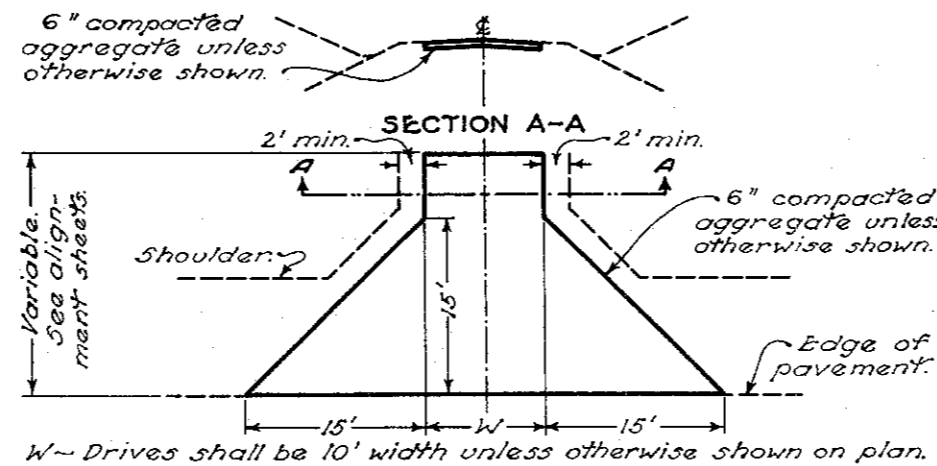
Shoulders at the edges of all pavement without curbs shall be finished 1 inch below pavement edge except on the high side of superelevated curves. When a stabilized shoulder is constructed adjacent to the pavement, it shall be finished flush with the pavement surface.



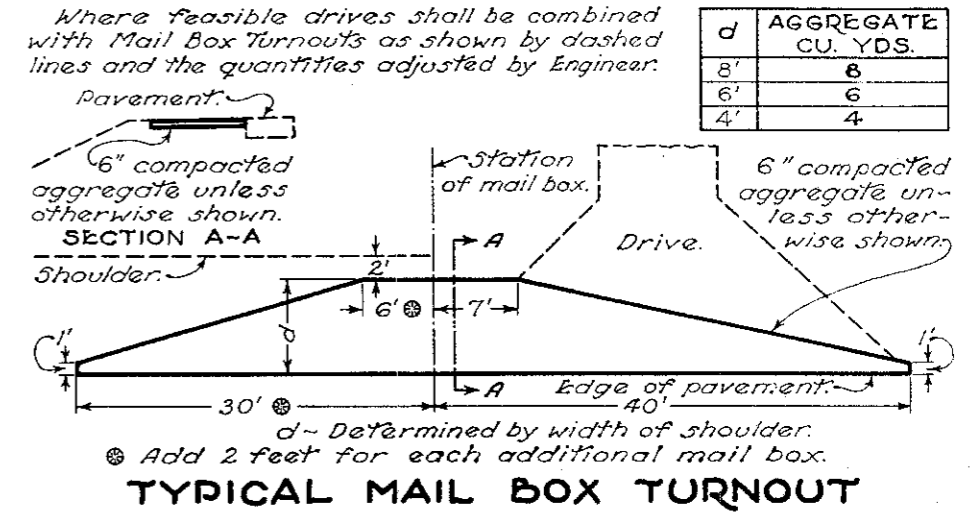
**NORMAL SHOULDER AND DITCH CONSTRUCTION**



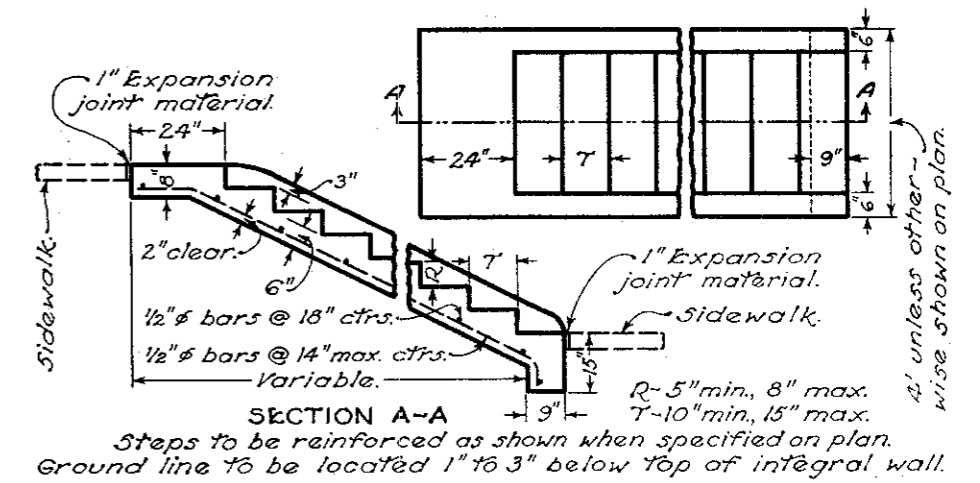
**TYPICAL PAVED DRIVEWAY**



**TYPICAL AGGREGATE DRIVE**



**TYPICAL MAIL BOX TURNOUT**



**CONCRETE STEPS**

All angles at change of slope shall be rounded as shown.

BUREAU OF LOCATION AND DESIGN  
OHIO DEPARTMENT OF HIGHWAYS

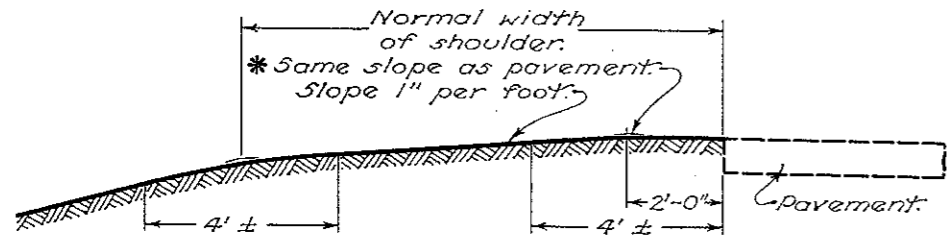
**ROADWAY ITEMS**

STANDARD CONSTRUCTION DRAWING **RI-1**

APPROVED: \_\_\_\_\_ CHIEF ENGINEER

DATE: 5-16-51  
6-1-55

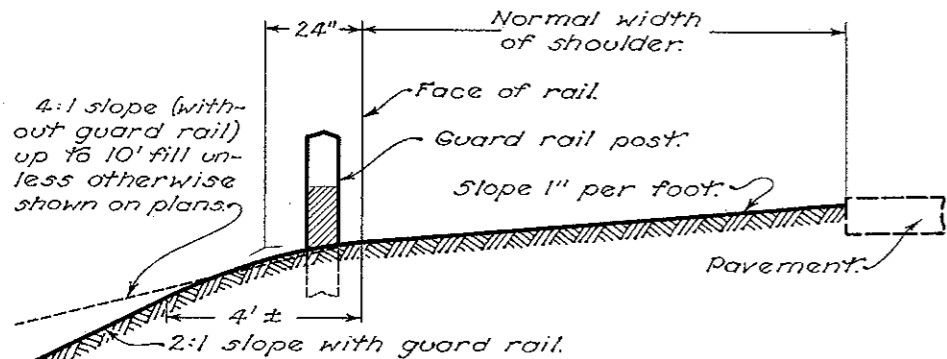
# ROADWAY ITEMS



\* Stabilized shoulder may be built with same slope of pavement for width of 4'-0".

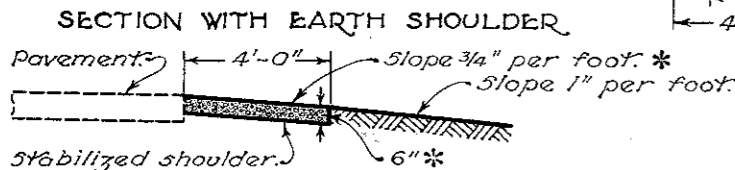
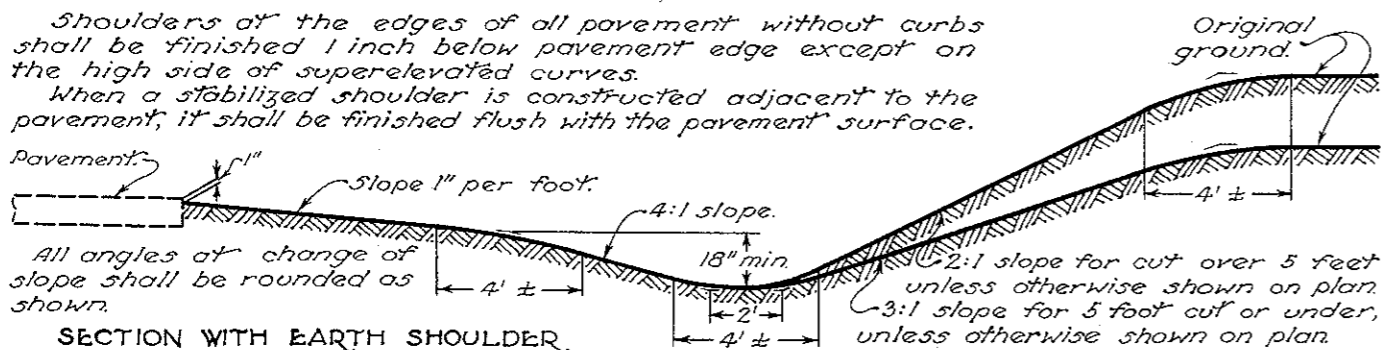
All angles at change of slope shall be rounded as shown.

## SHOULDER TREATMENT ON HIGH SIDE OF SUPERELEVATED CURVES



Shoulders shall be constructed 2 feet wider than the normal section where guard rail is required.  
Angle at change of slope shall be rounded as shown.

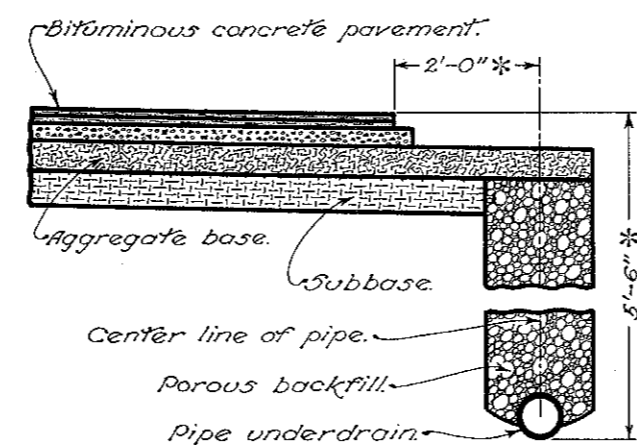
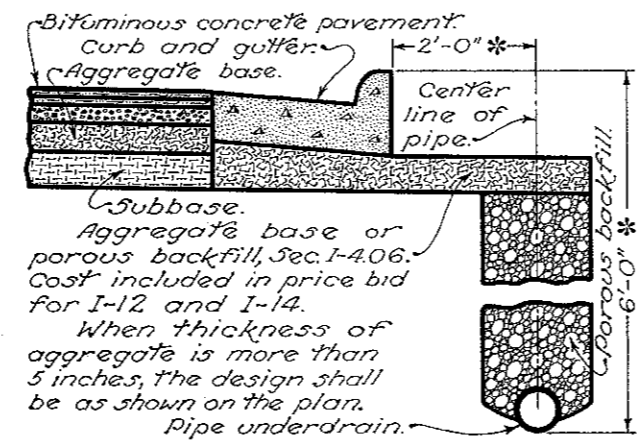
## LOCATION OF GUARD RAIL



SECTION USING STABILIZED SHOULDER

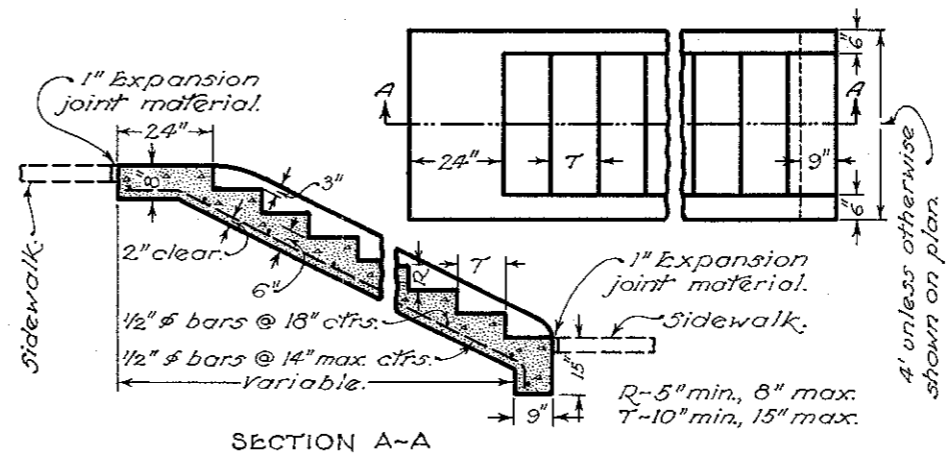
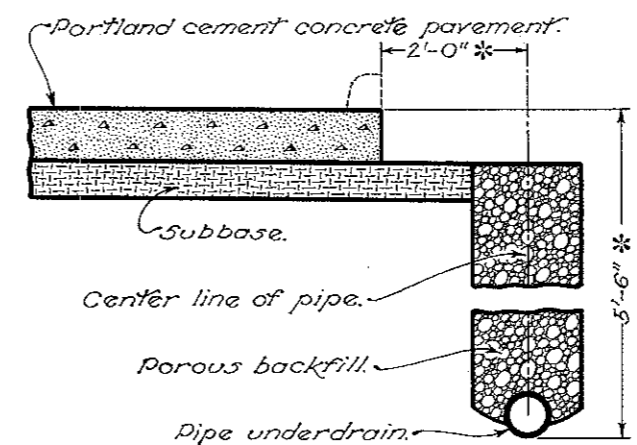
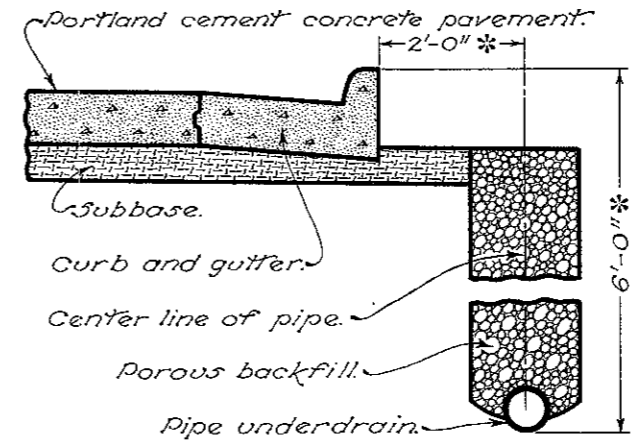
## NORMAL SHOULDER AND DITCH CONSTRUCTION

\* Unless otherwise shown on plan.



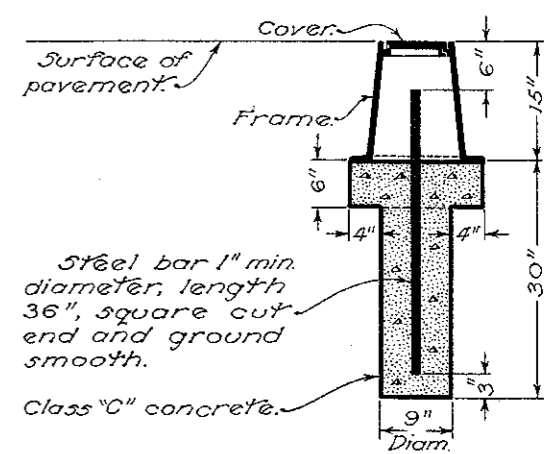
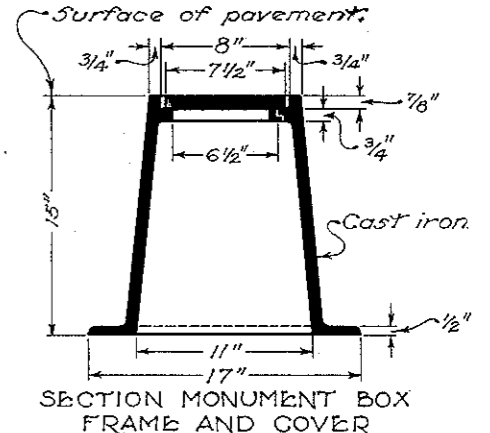
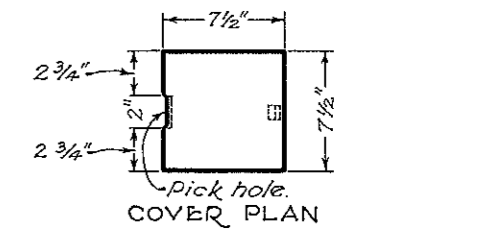
\* Unless otherwise shown on the plans.  
WITH FLEXIBLE PAVEMENT      WITH PORTLAND CEMENT CONCRETE PAVEMENT

## PIPE UNDERDRAIN CONSTRUCTION



Steps to be reinforced as shown when specified on plan.  
Ground line to be located 1" to 3" below top of integral wall.

## CONCRETE STEPS



## SECTION MONUMENT ASSEMBLY

Cost of furnishing and placing monument box, steel bar and class "C" concrete included in price bid for Item I-8 Monument Assembly.

## MONUMENT ASSEMBLY

BUREAU OF LOCATION AND DESIGN  
OHIO DEPARTMENT OF HIGHWAYS

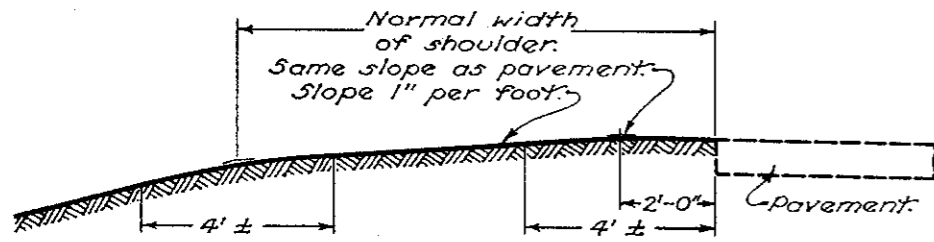
# ROADWAY ITEMS

STANDARD CONSTRUCTION DRAWING  
APPROVED *K.L.R.* ENGR. L. & D.

R1-1

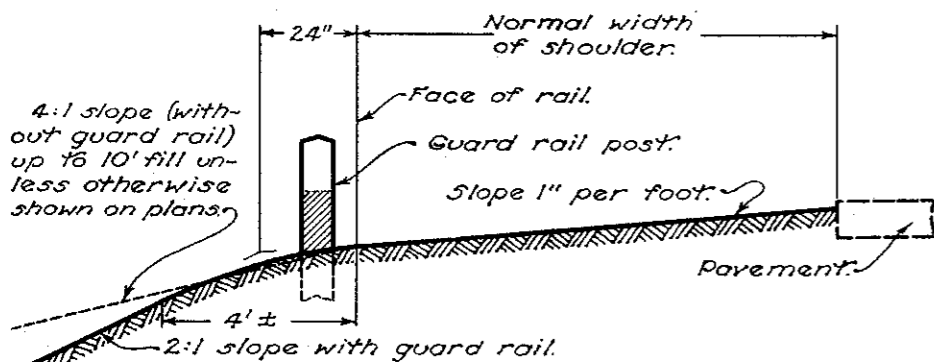
DATE  
5-16-51  
6-1-53  
1-3-55

# ROADWAY ITEMS



\* All angles at change of slope shall be rounded as shown.  
 \* Unless otherwise shown on plan.

## SHOULDER TREATMENT ON HIGH SIDE OF SUPERELEVATED CURVES

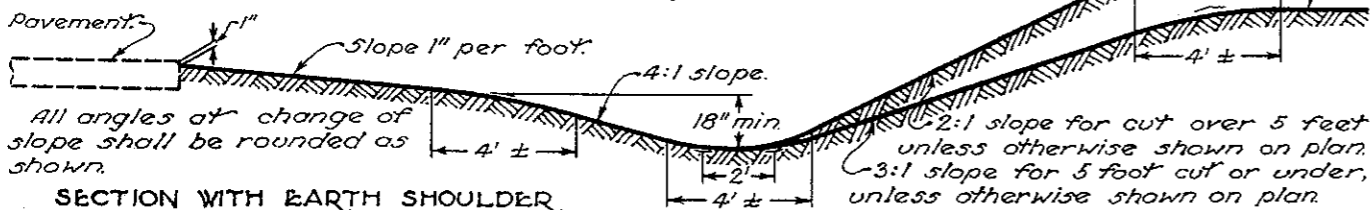


\* Shoulders shall be constructed 2 feet wider than the normal section where guard rail is required.  
 \* Angle at change of slope shall be rounded as shown.

\* Unless otherwise shown on plan.

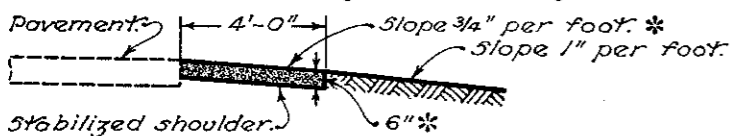
## LOCATION OF GUARD RAIL

Shoulders at the edges of all pavement without curbs shall be finished 1 inch below pavement edge except on the high side of superelevated curves. When a stabilized shoulder is constructed adjacent to the pavement, it shall be finished flush with the pavement surface.



All angles at change of slope shall be rounded as shown.

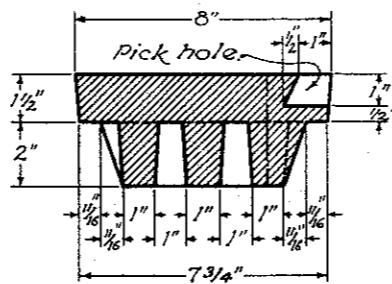
### SECTION WITH EARTH SHOULDER



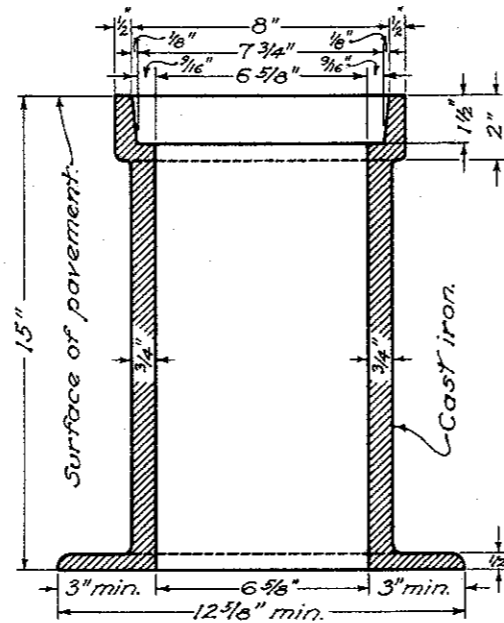
### SECTION USING STABILIZED SHOULDER

## NORMAL SHOULDER AND DITCH CONSTRUCTION

\* Unless otherwise shown on plan.

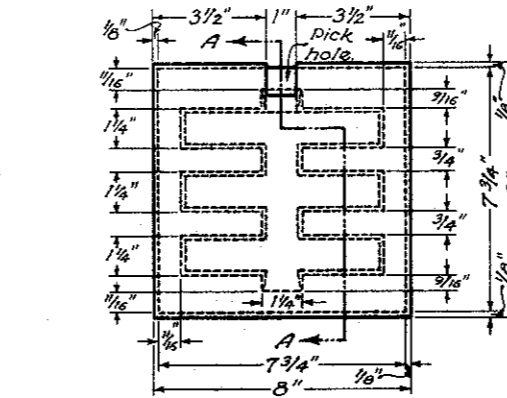


MONUMENT BOX COVER SECTION A-A

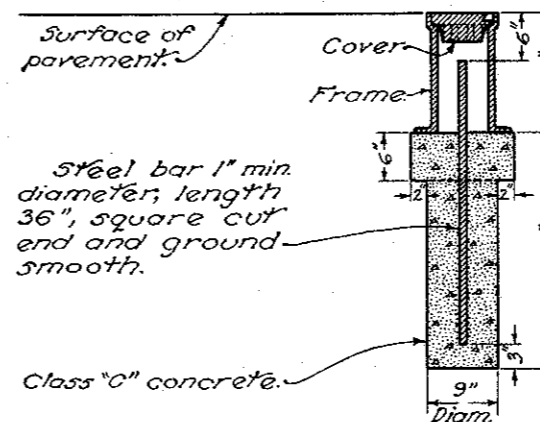


MONUMENT BOX FRAME SECTION

## MONUMENT ASSEMBLY

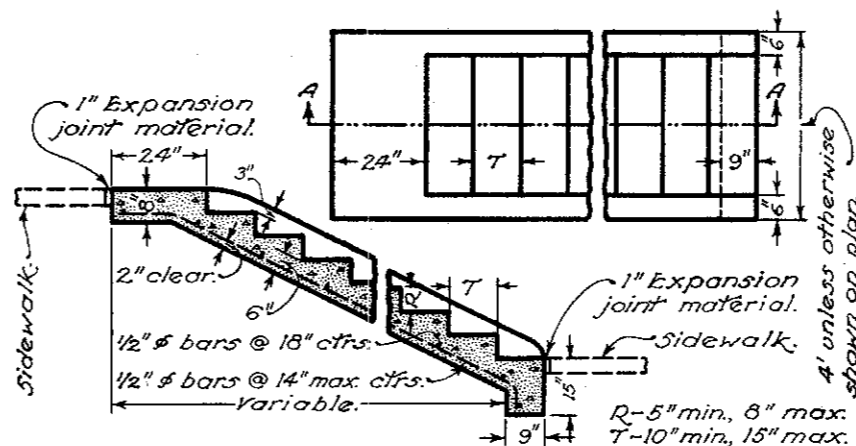


MONUMENT BOX COVER PLAN



MONUMENT ASSEMBLY SECTION

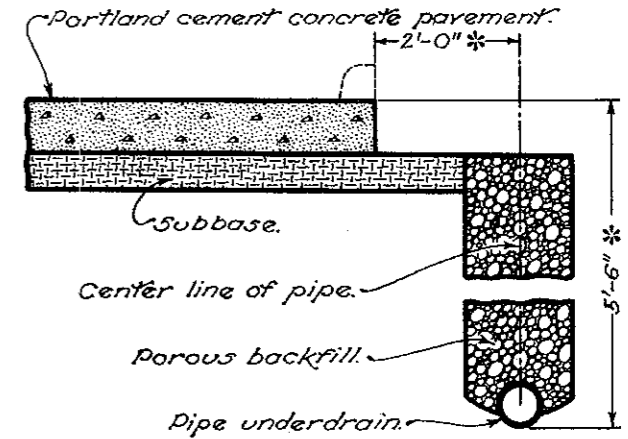
Cost of furnishing and placing monument box, steel bar and class "C" concrete included in price bid for Item I-8 Monument Assembly.



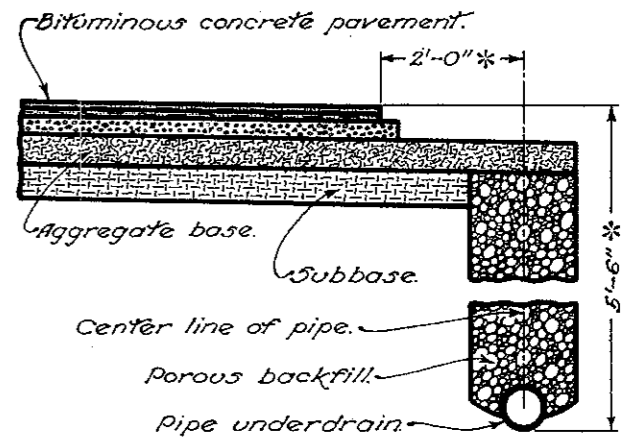
SECTION A-A

Steps to be reinforced as shown when specified on plan. Ground line to be located 1" to 3" below top of integral wall.

## CONCRETE STEPS



WITH PORTLAND CEMENT CONCRETE PAVEMENT



WITH FLEXIBLE PAVEMENT

\* Unless otherwise shown on plan.

## PIPE UNDERDRAIN CONSTRUCTION

BUREAU OF LOCATION AND DESIGN  
OHIO DEPARTMENT OF HIGHWAYS

# ROADWAY ITEMS

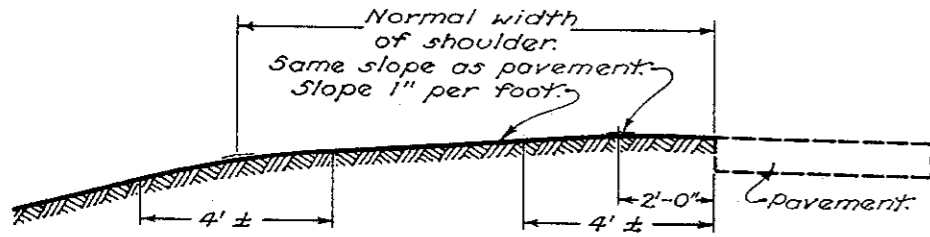
STANDARD  
CONSTRUCTION  
DRAWING

RI-1

APPROVED: *[Signature]* ENGR. L. & D.

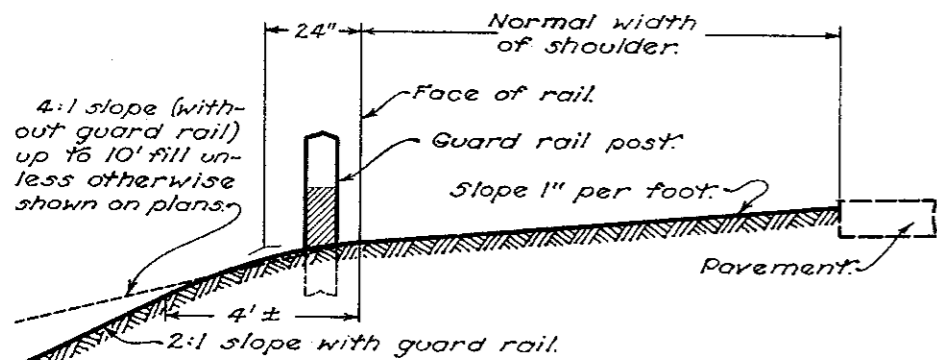
DATE  
5-16-51  
6-1-53  
1-3-55  
7-15-58

# ROADWAY ITEMS



\* All angles at change of slope shall be rounded as shown.  
\* Unless otherwise shown on plan.

## SHOULDER TREATMENT ON HIGH SIDE OF SUPERELEVATED CURVES

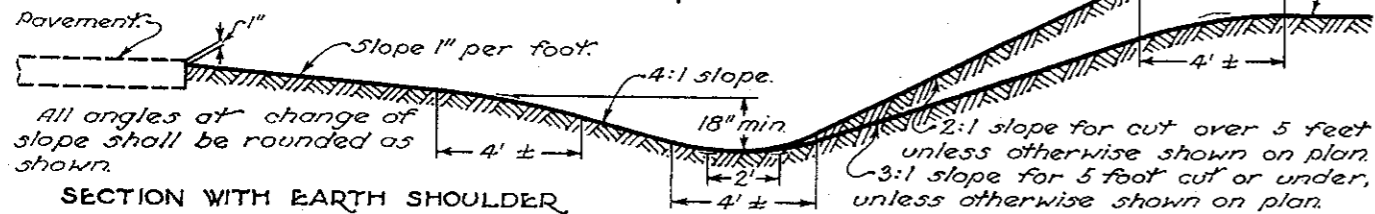


\* Shoulders shall be constructed 2 feet wider than the normal section where guard rail is required.  
\* Angle at change of slope shall be rounded as shown.

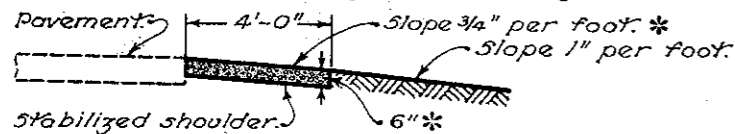
## LOCATION OF GUARD RAIL

Shoulders at the edges of all pavement without curbs shall be finished 1 inch below pavement edge except on the high side of superelevated curves.

When a stabilized shoulder is constructed adjacent to the pavement, it shall be finished flush with the pavement surface.



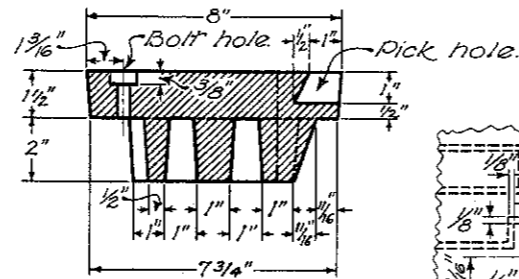
## SECTION WITH EARTH SHOULDER



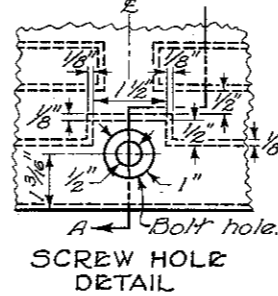
## SECTION USING STABILIZED SHOULDER

## NORMAL SHOULDER AND DITCH CONSTRUCTION

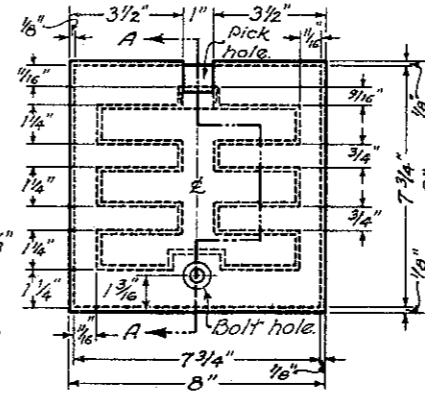
\* Unless otherwise shown on plan.



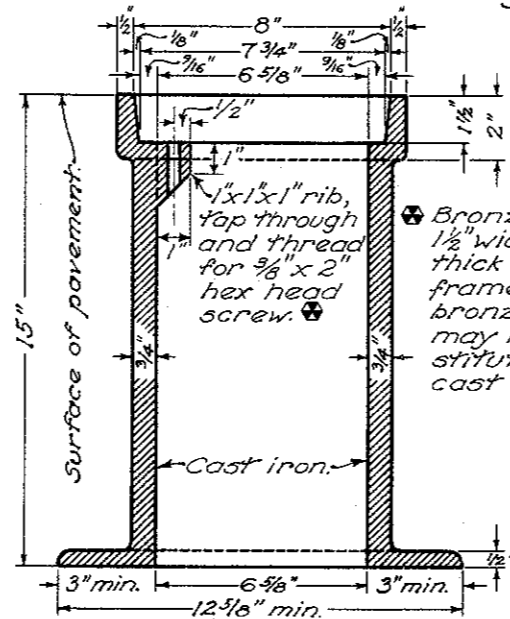
MONUMENT BOX COVER SECTION A-A



SCREW HOLE DETAIL



MONUMENT BOX COVER PLAN



MONUMENT BOX FRAME SECTION

## MONUMENT ASSEMBLY SECTION

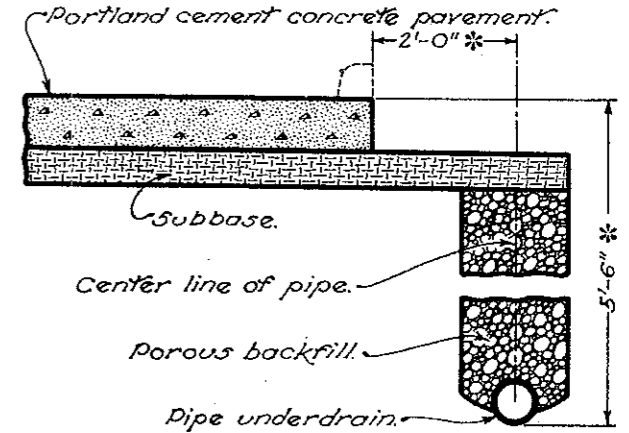
Fasten cover to frame with 3/8 x 2 hex head bronze cap screw.

Steel bar 1" min diameter, length 36", square cut end and ground smooth.

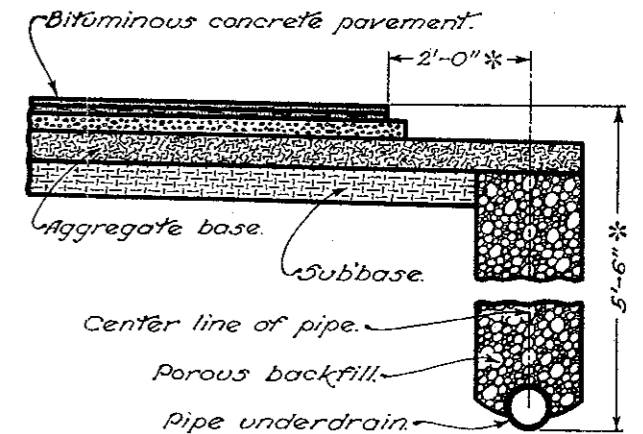
Class "C" concrete.

Cost of furnishing and placing monument box, steel bar and class "C" concrete included in price bid for Item I-8 Monument Assembly.

## MONUMENT ASSEMBLY



WITH PORTLAND CEMENT CONCRETE PAVEMENT



WITH FLEXIBLE PAVEMENT

\* Unless otherwise shown on plan.

## PIPE UNDERDRAIN CONSTRUCTION

BUREAU OF LOCATION AND DESIGN  
OHIO DEPARTMENT OF HIGHWAYS

## ROADWAY ITEMS

STANDARD CONSTRUCTION DRAWING  
APPROVED *[Signature]* ENGR. L. & D.

DATE  
5-16-51  
6-1-53  
7-15-58  
9-1-64