

CONCRETE STEPS

NOTES

GENERAL: Top of integral wall shall be located 25 to 75 mm above ground line.

TYPE A: Hand railing and stairposts shall be fabricated from nominal size 38 mm diameter, 3.7 mm wall thickness steel pipe meeting the requirements of the Specification for Welded and Seamless Steel Pipe ASTM A 53 Standard Weight, Schedule Number 40, or aluminum pipe meeting the requirements of the Specification for Aluminum-Alloy Pipe ASTM B 241, 6063 T6 ASA, Schedule Number 40.

Steel handrails and stairposts shall be galvanized after fabrication in accordance with ASTM A 123. Splices for steel railing shall be field-welded. Areas on which the spelter coating has been damaged shall be re-galvanized in accordance with AASHTO M 36 Section 24, Metalizing Process or they shall be repaired under the direction of the Engineer with stick-form galvanizing repair compound meeting the requirements of Federal Specification O-G-93.

A single handrail shall be installed to the right side of the stairs, facing up, unless shown otherwise on the plans.

For stair widths greater than 1100 mm, a handrail is required on both sides of the stairs. Hand railings shall also be installed on both sides of the steps with widths less than 1100 mm, if required by the plans.

Splices for aluminum railing shall be provided with internal sleeves and shall be smooth and water tight after welding.

Stairposts shall be cast-in-place or set in sockets filled with "1:3" cement mortar. That portion of aluminum stairposts set into concrete or mortar shall be given a heavy coating of asphalt varnish or coal-tar pitch paint, both inside and outside.

The installed stairposts and handrails shall be free of burrs or sharp projections.

LEGEND

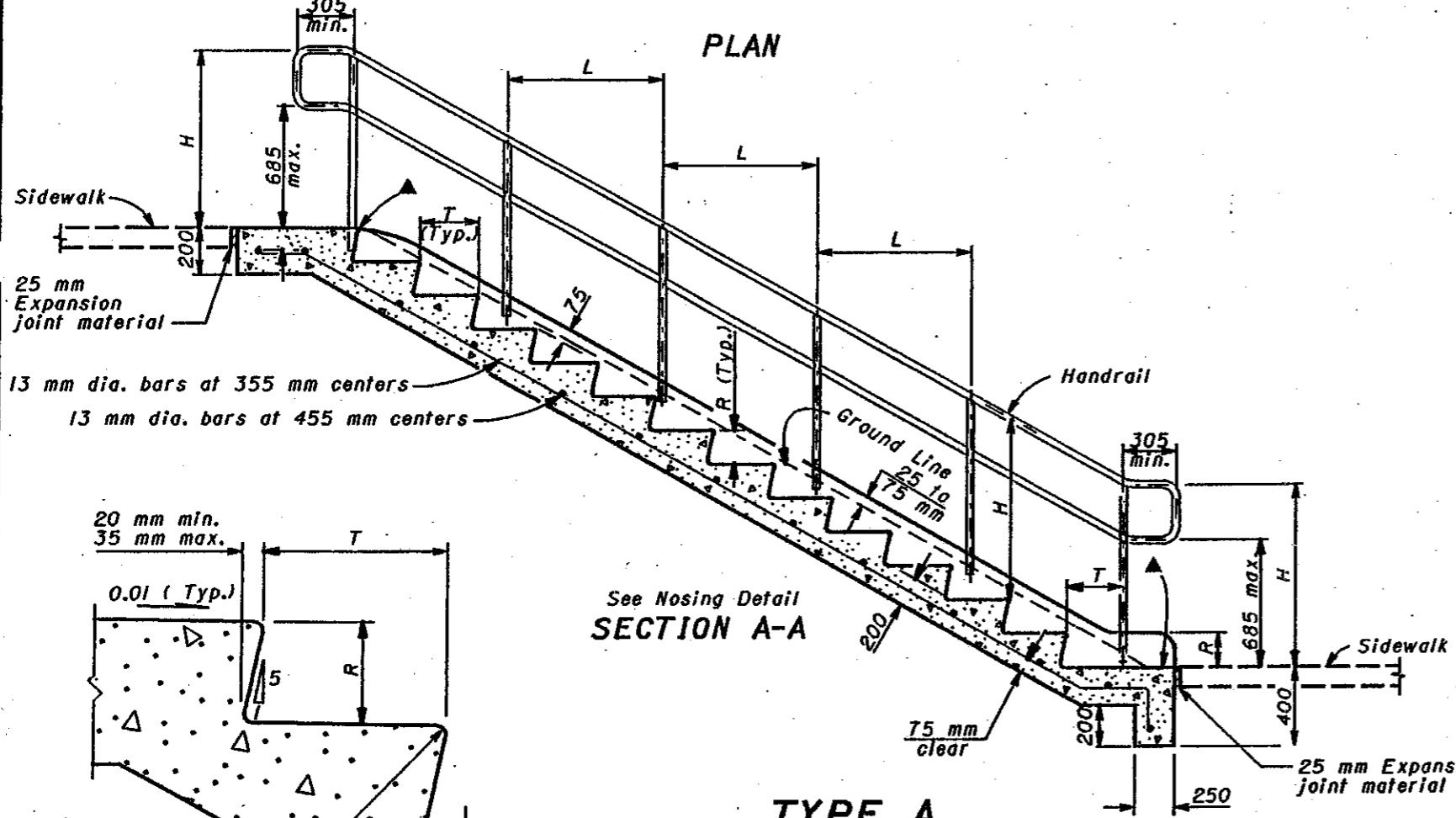
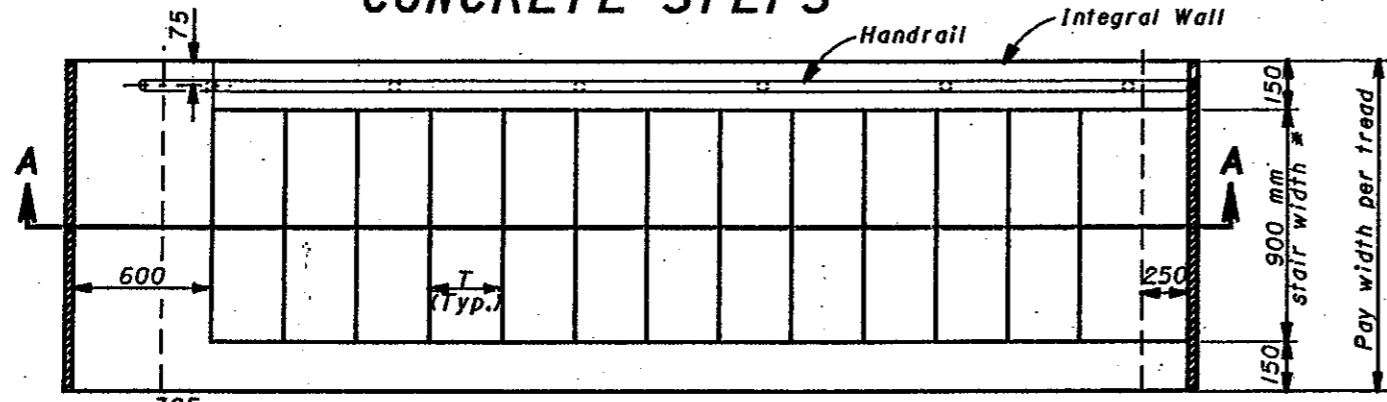
- H ~ 865 mm min., 965 mm max.
 - R ~ 100 mm min., 175 mm max.
 - T ~ 275 mm min., 375 mm max.
- All risers shall be of equal height and all treads shall be of equal depth on any set of steps.
- L ~ Interior panel lengths shall be equal. The upper and lower panel lengths may vary. Panel lengths shall not exceed 1.0 m.
- * Unless shown otherwise on plan.
- ▲ Measurable tread per CMS 608.08

All dimensions are in millimeters unless otherwise noted.

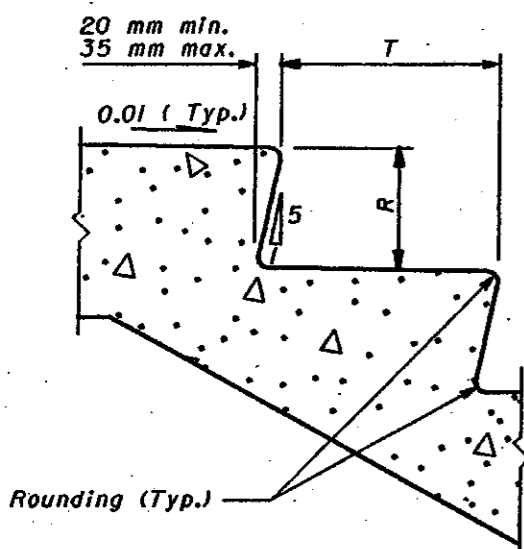


This Drawing Replaces MC-2.

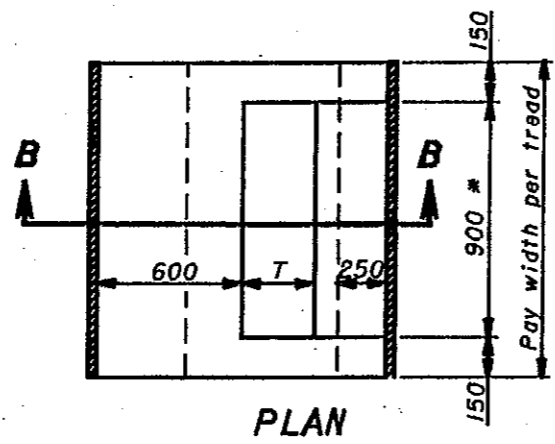
BUREAU OF LOCATION AND DESIGN OHIO DEPARTMENT OF TRANSPORTATION	
CONCRETE STEPS	DATE 7-12-95
STANDARD CONSTRUCTION DRAWING RM-2.1M	
APPROVED <i>D.K. Hulman</i> ENGR., L & D	



TYPE A
(For 3 Risers or more)

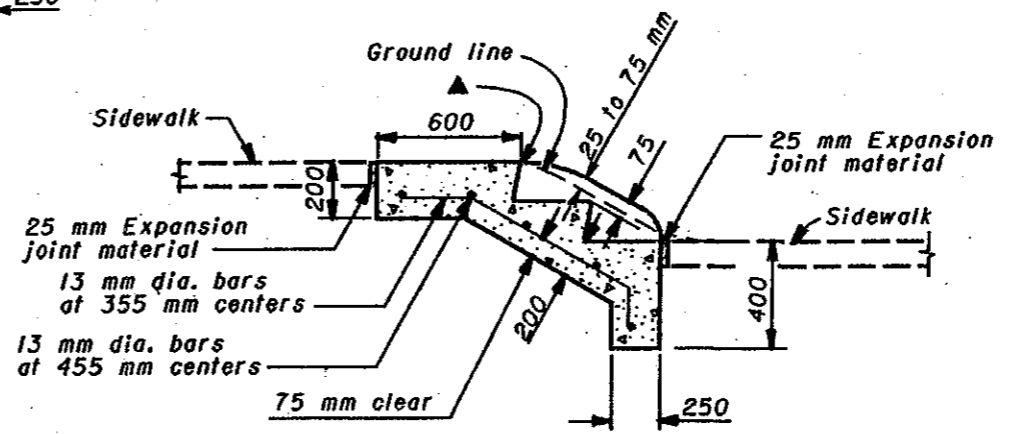


NOSING DETAIL



PLAN

TYPE B



See Nosing Detail
SECTION B-B