

NOTES

GENERAL: Locate the top of the integral wall 1" [25] to 3" [75] above ground line.

TYPE A: Fabricate hand railing and stairposts from nominal size 1 1/2" [38] diameter, 0.145" [3.7] wall thickness steel pipe meeting the requirements of the Specification for Welded and Seamless Steel Pipe ASTM A 53 Standard Weight, Schedule Number 40, or aluminum pipe meeting the requirements of the Specification for Aluminum-Alloy Pipe ASTM B 241, 6063 T6 ASA, Schedule Number 40.

Galvanize steel handrails and stairposts after fabrication as specified in ASTM A 123. Field weld splices for steel railing. Re-galvanize areas on which the spelter coating has been damaged as specified in AASHTO M 36 Section 24, Metalizing Process or repair under the direction of the Engineer with stick-form galvanizing repair compound meeting Federal Specification O-G-93.

Install a single handrail to the right side of the stairs, facing up, unless otherwise shown on the plans.

For stair widths greater than 43" [1100], a handrail is required on both sides of the stairs. Install hand railings on both sides of stairs that are less than 43" [1100] wide, when required by the plans.

Provide splices for aluminum railing with internal sleeves, and after welding, be smooth and water tight.

Cast-in-place or set stairposts in sockets filled with 1:3 proportioned cement mortar. Provide a heavy coating of asphalt varnish or coal-tar pitch paint (both inside and outside) to the portion of aluminum stairposts set into concrete or mortar.

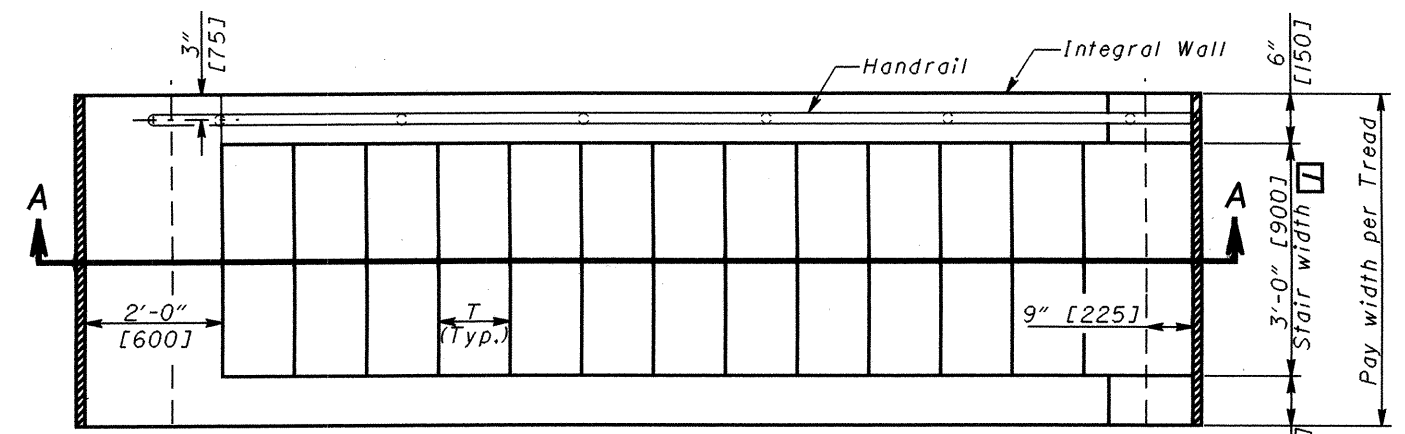
Embed the stairposts a minimum depth 4" [100].

Install stairposts and handrails free of burrs or sharp projections.

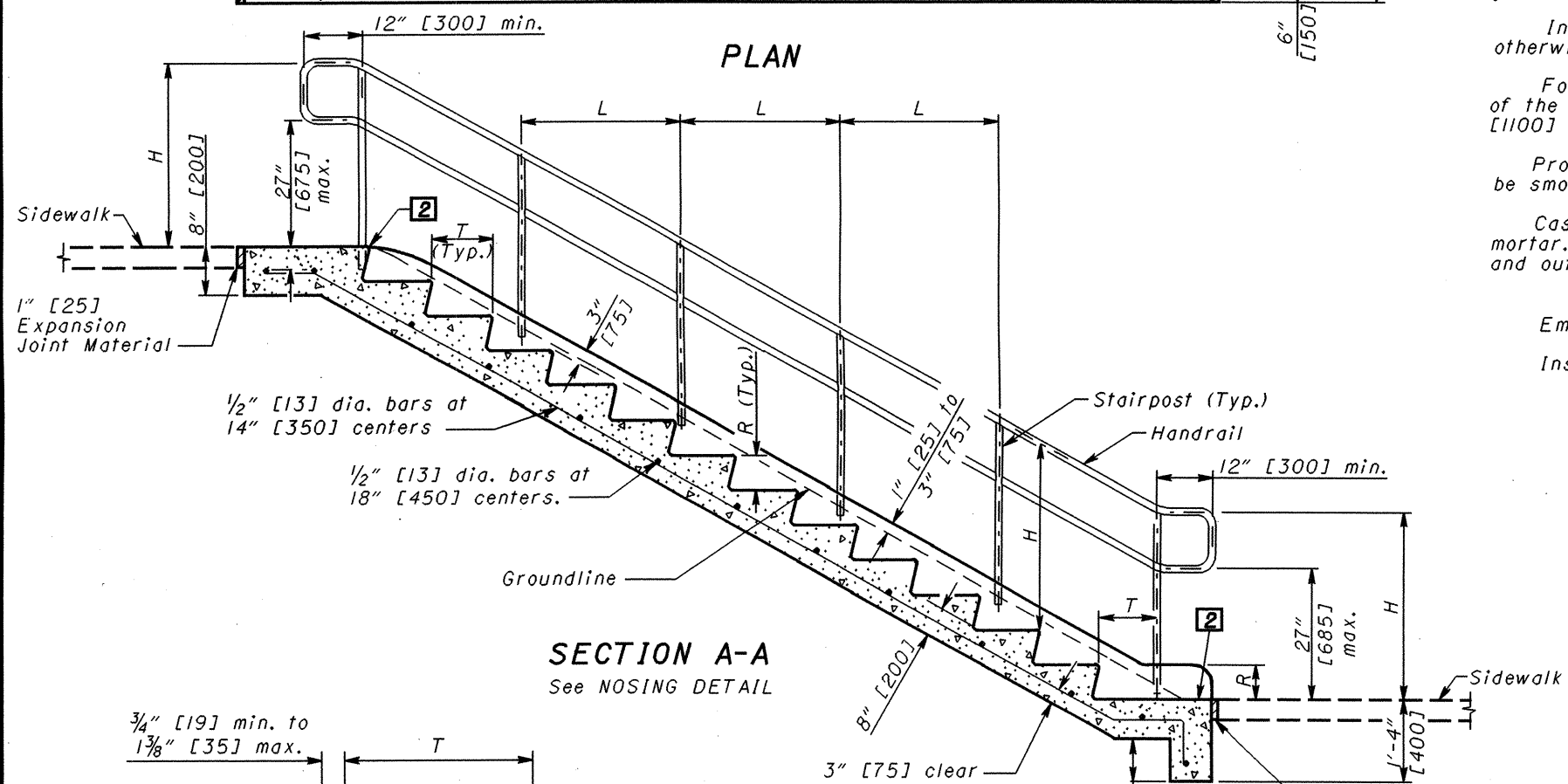
LEGEND

- H ~ 34" [850] min., 38" [950] max.
- R ~ 4" [100] min., 7" [175] max.
- T ~ 11" [275] min., 15" [375] max.
- L ~ Equal interior panel lengths equal. The upper and lower panel lengths may vary. Panel lengths are not to exceed 3'-0" [1.0 m].

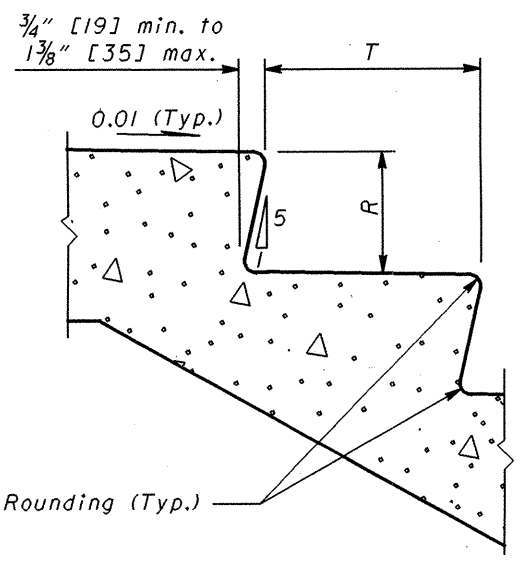
- 1 Unless shown otherwise on the plans.
- 2 Measurable tread per CMS 608.08



PLAN



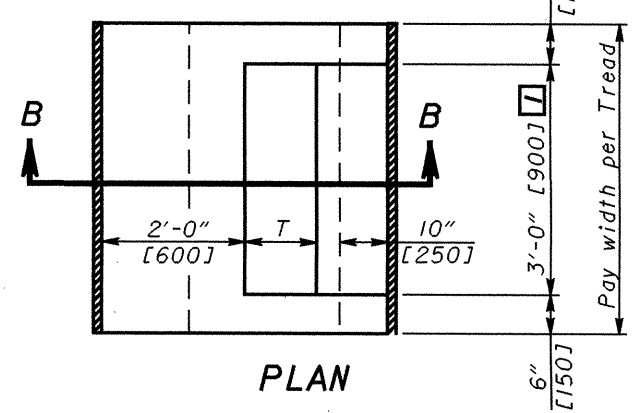
SECTION A-A
See NOSING DETAIL



NOSING DETAIL

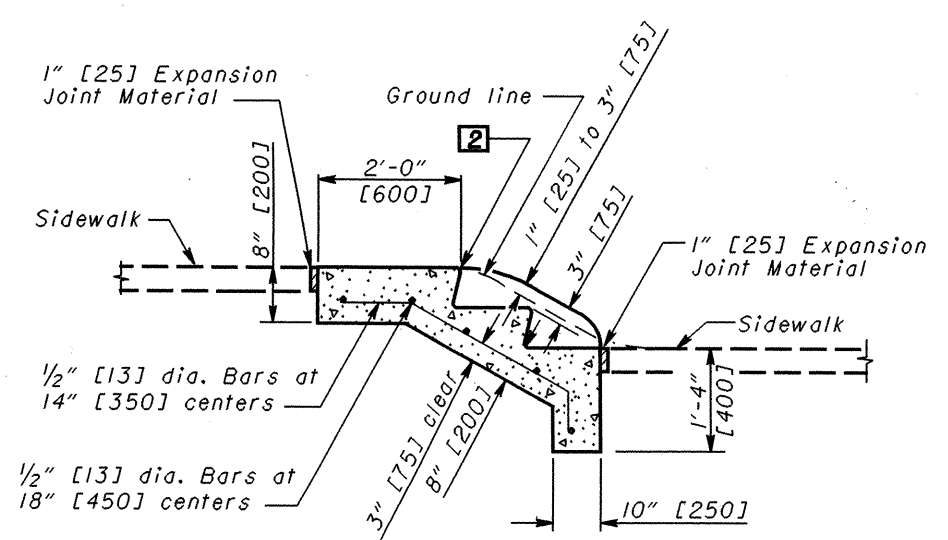
All risers shall be of equal height and all treads shall be of equal depths on any set of stairs.

TYPE A
(For 3 Risers or more)



PLAN

TYPE B (Less than 3 Risers)



See NOSING DETAIL
SECTION B-B

THIS DRAWING REPLACES RM-2.I.M DATED 7-12-95.

