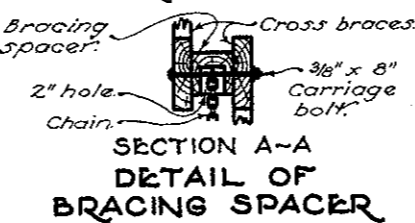
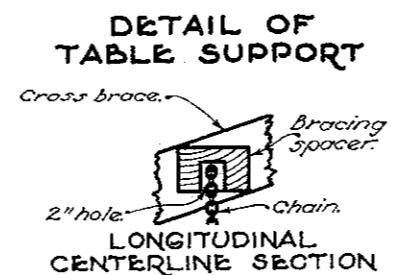
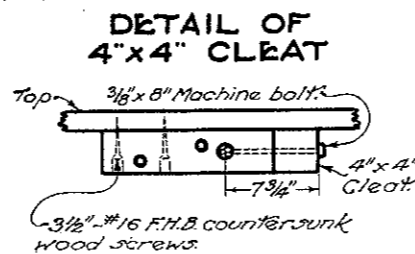
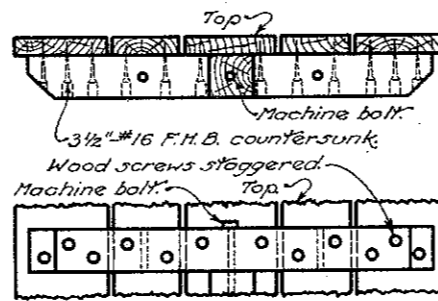
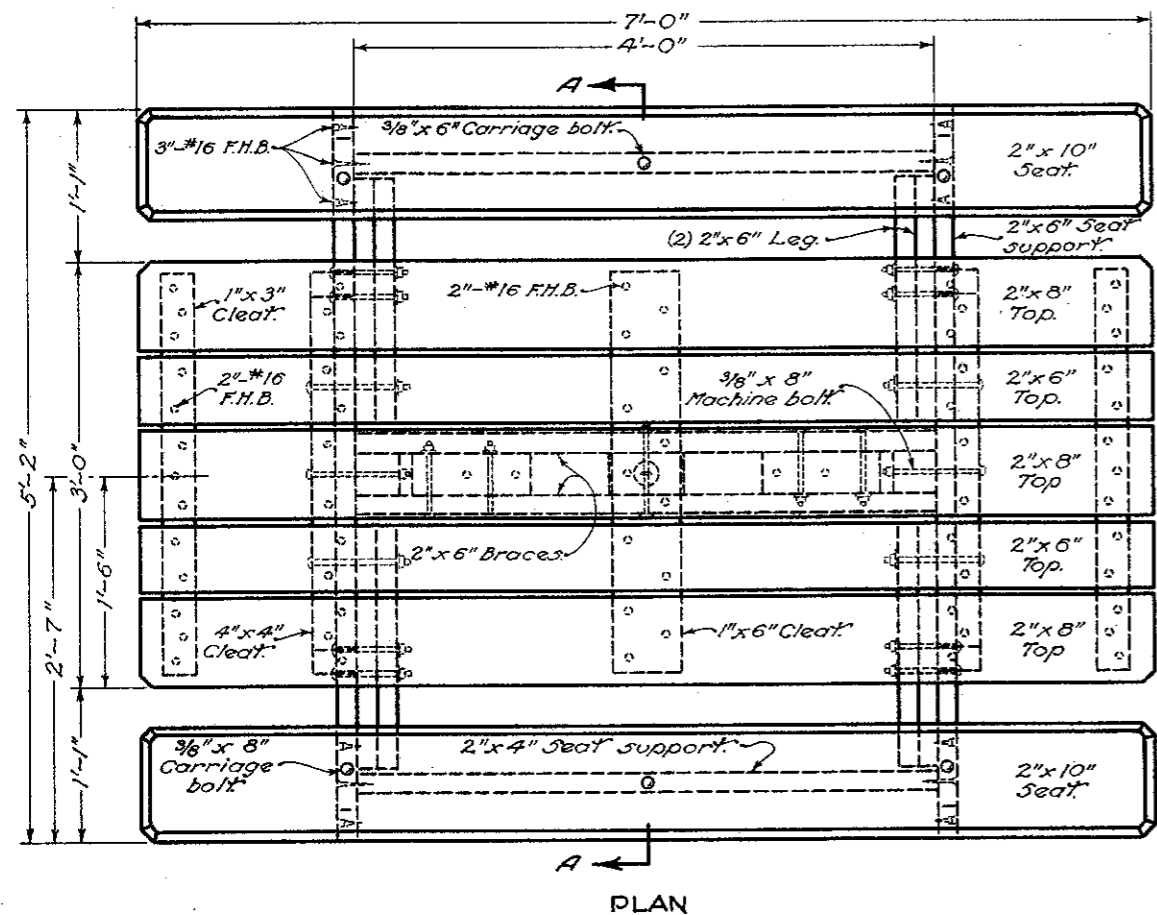
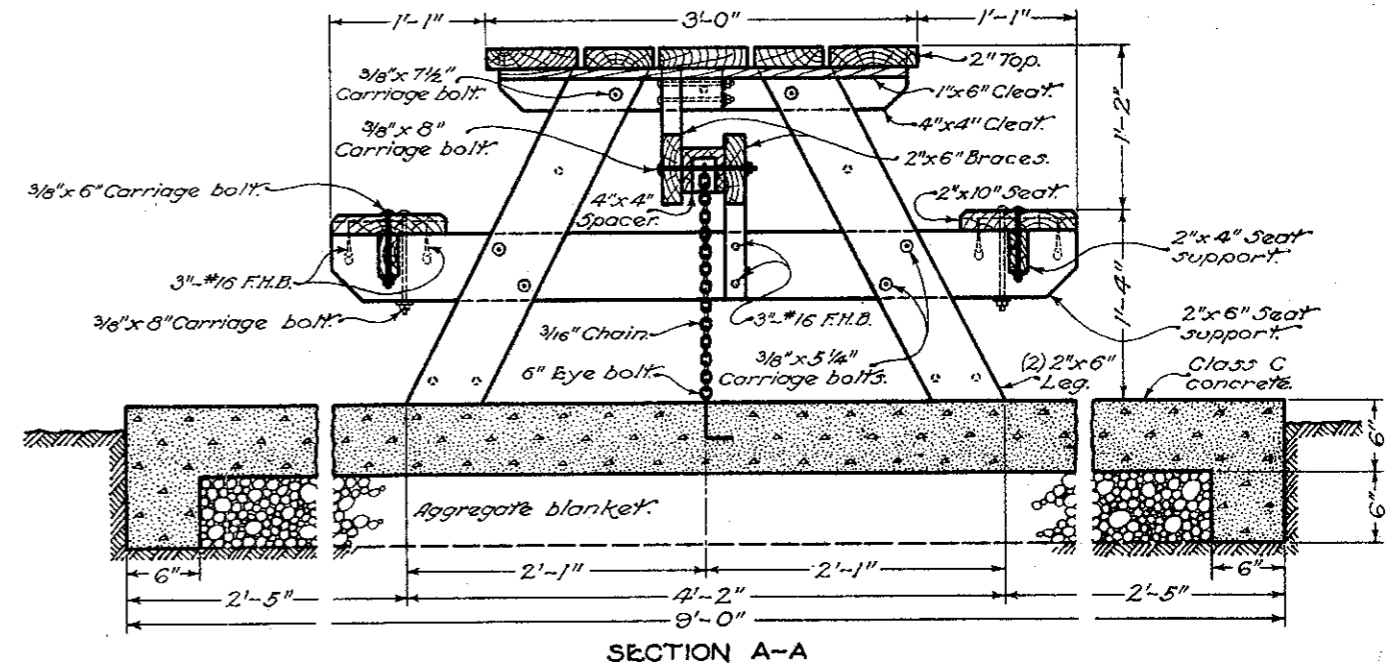
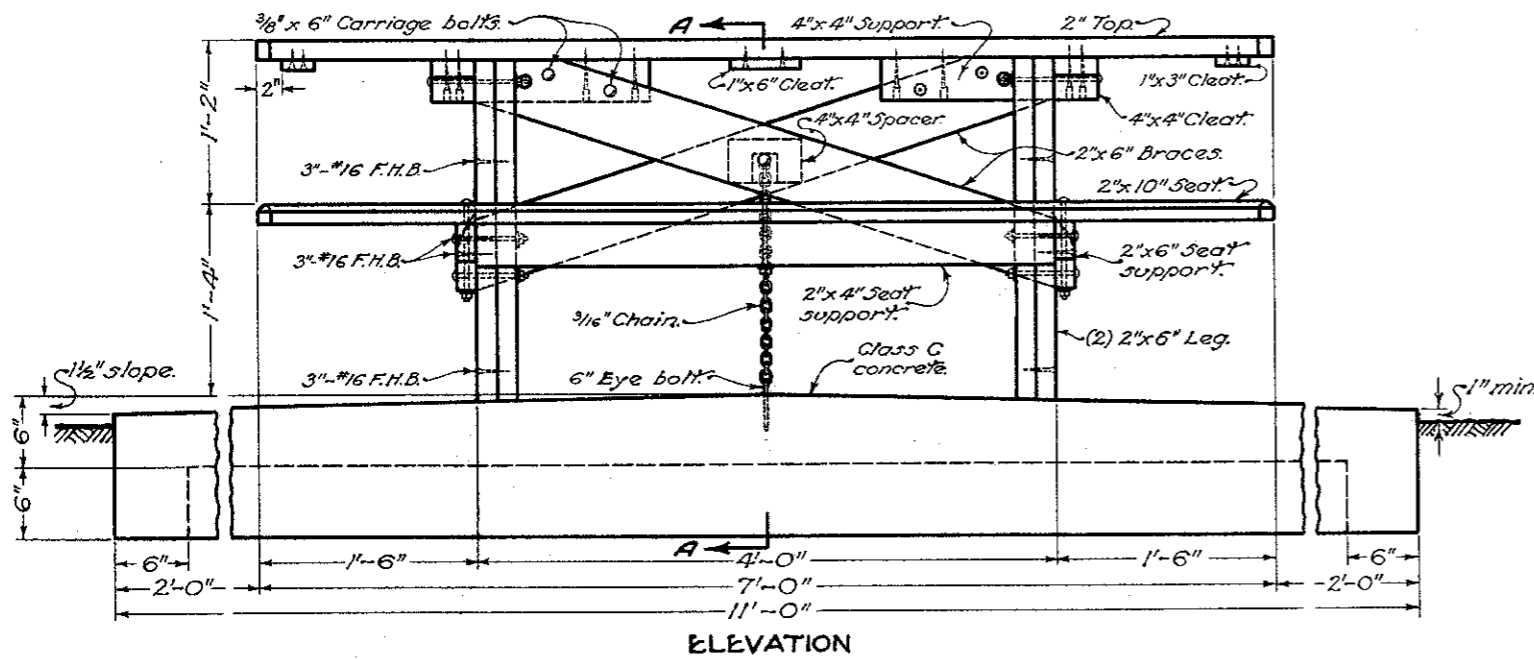


# PICNIC TABLE



## LIST OF MATERIAL

LUMBER		HARDWARE	
2-2" x 6" x 7'	TABLE TOPS	28-3/2"	#16 F.H.B. WOOD SCREWS
3-2" x 8" x 7'	TABLE TOPS	32-3"	#16 F.H.B. WOOD SCREWS
2-4" x 4" x 14 3/8"	TABLE TOP SUPPORTS	39-2"	#16 F.H.B. WOOD SCREWS
1-1" x 6" x 34"	CLEAT FOR TABLE TOP	8-3/8" x 5 1/4"	CARRIAGE BOLTS
2-1" x 3" x 34"	CLEATS FOR TABLE TOP	6-3/8" x 6"	CARRIAGE BOLTS
2-4" x 4" x 34"	CLEATS FOR TABLE TOP	4-3/8" x 7 1/2"	CARRIAGE BOLTS
2-2" x 10" x 7'	SEATS	5-3/8" x 8"	CARRIAGE BOLTS
2-2" x 4" x 4'	SEAT SUPPORTS	2-3/8" x 8"	MACHINE BOLTS
2-2" x 6" x 5'-2"	SEAT SUPPORTS	1-1/2" x 6"	EYE BOLT
2-2" x 6" x 4'-6"	CROSS BRACES	25-3/8"	FLAT WASHERS
8-2" x 6" x 32"	LEGS	25-3/8"	LOCK WASHERS
1-4" x 4" x 6"	BRACING SPACER	1-3/16" x 24"	CHAIN

**CONCRETE**  
2.2 CU. YDS. CLASS C CONCRETE

## NOTES

**GENERAL:** All lumber shall be Arkansas Soft Textured, Shortleaf Yellow Pine, S4S Std. K. D., Item M-8. Lumber for seats and table tops shall be "C" grade or better; other lumber shall be No. 1 Common. Not more than one (1) very small pitch pocket will be allowed in each piece of lumber used in the table top and seats. All lumber shall bear "Arkansas Pine Association" trademark.

All lumber shall be pressure treated with Pentachlorophenol solution as specified in Section M-8.7 except that the Pentachlorophenol solution shall be "Water Repellent" and meet the requirements of the National Woodworking Manufacturers Association.

Bolts shall be cadmium plated or hot galvanized finish. Screws shall be brass.

**PARK TABLE:** This item shall consist of furnishing, assembling and placing all materials, including the excavation, port. cem. concrete slab and aggregate blanket, required to complete the table and slab as detailed.

Aggregate for required blanket under Park Table slab shall meet the requirements of Section I-2.2.02, Grading "C" or "D".

**SHELTER HOUSE TABLE:** This item shall consist of furnishing and assembling all materials required to complete the table as detailed but shall not include the port. cem. concrete slab.

BUREAU OF LOCATION AND DESIGN  
OHIO DEPARTMENT OF HIGHWAYS

DATE  
9-14-56

# ROADSIDE PARKS

STANDARD CONSTRUCTION DRAWING  
APPROVED *[Signature]*

R.P.  
No. 2  
ENGR. L. & D.