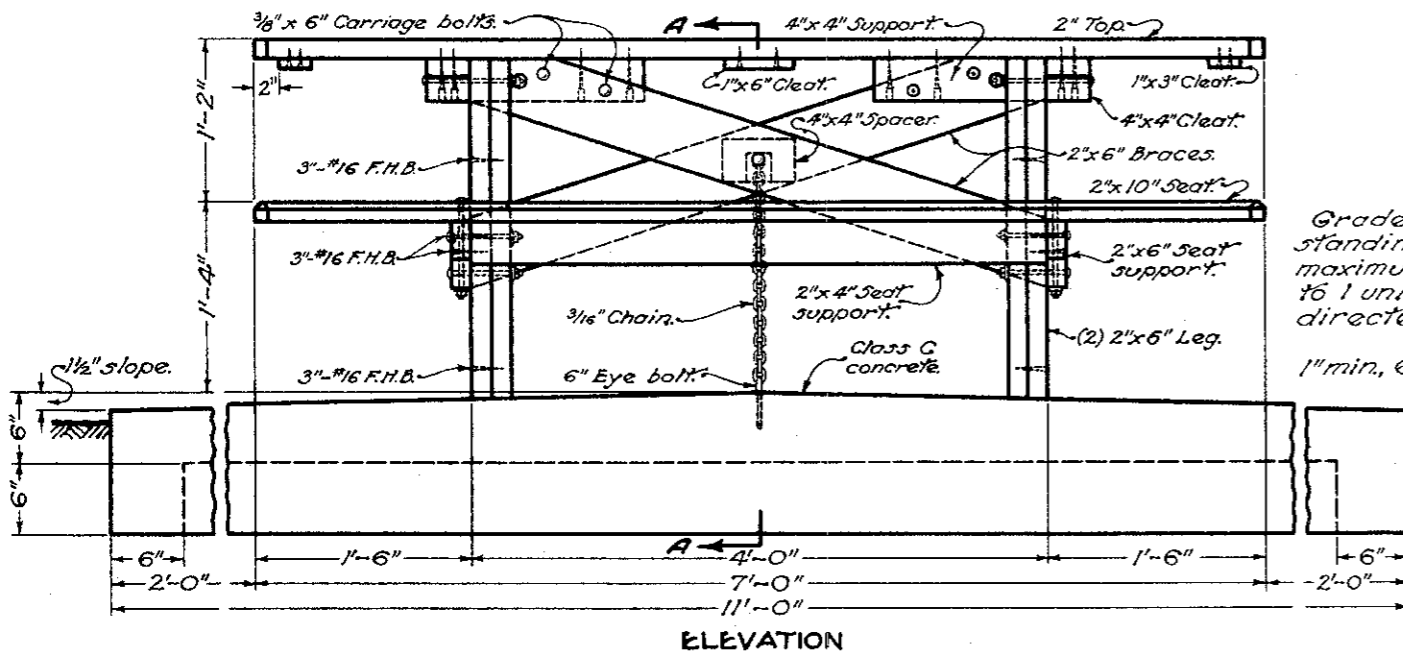
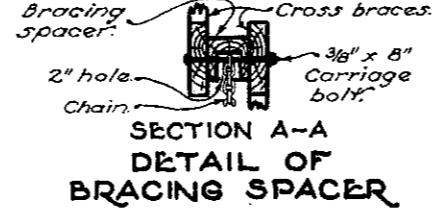
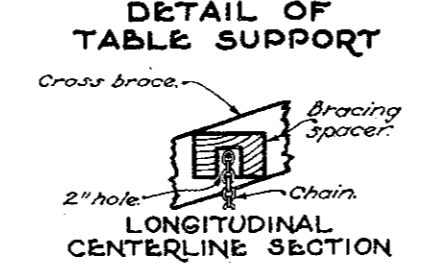
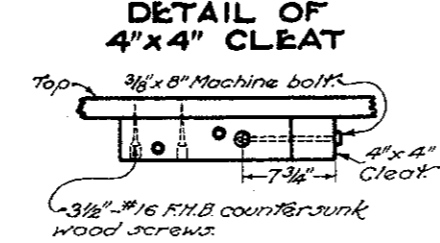
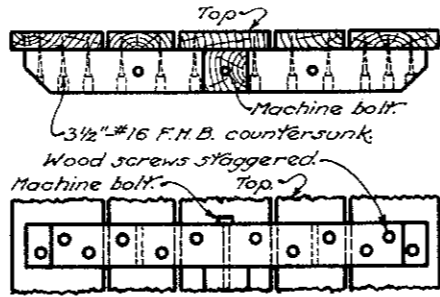
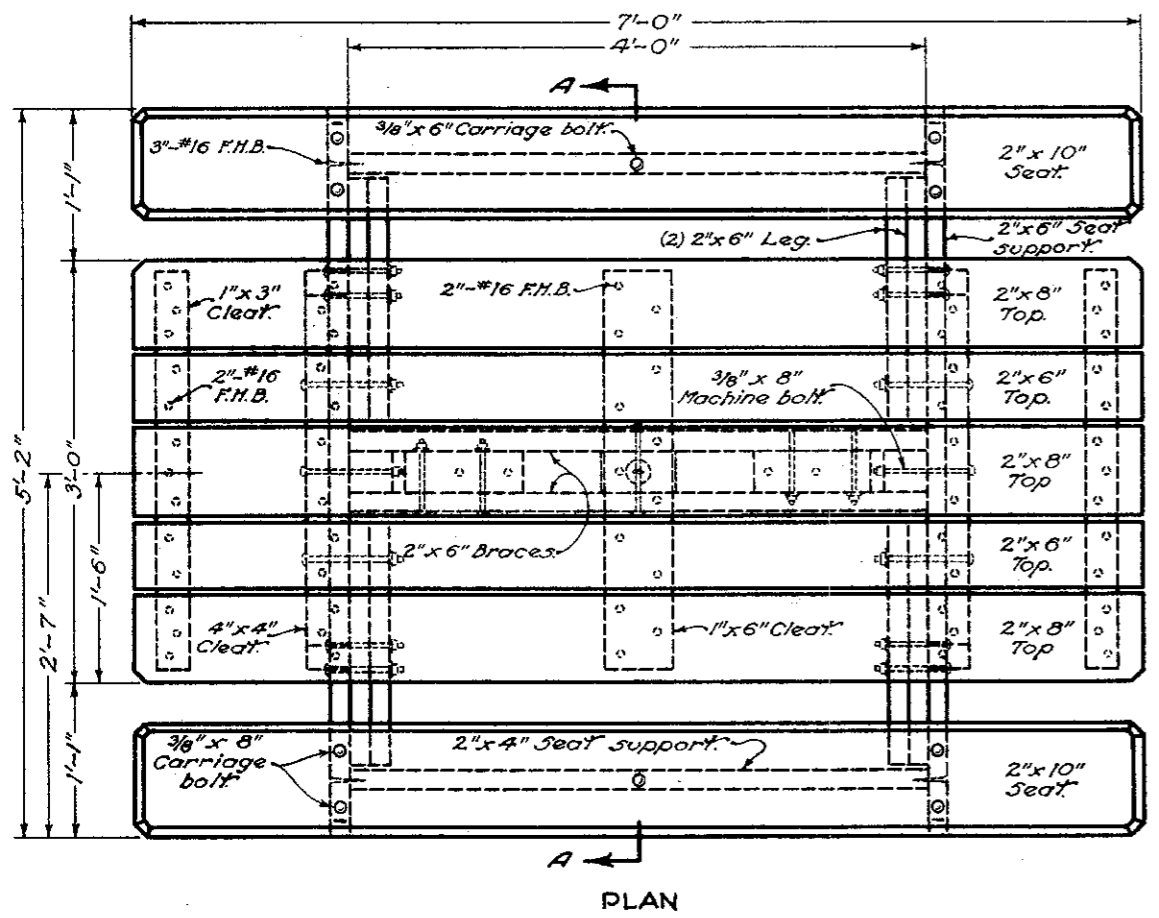
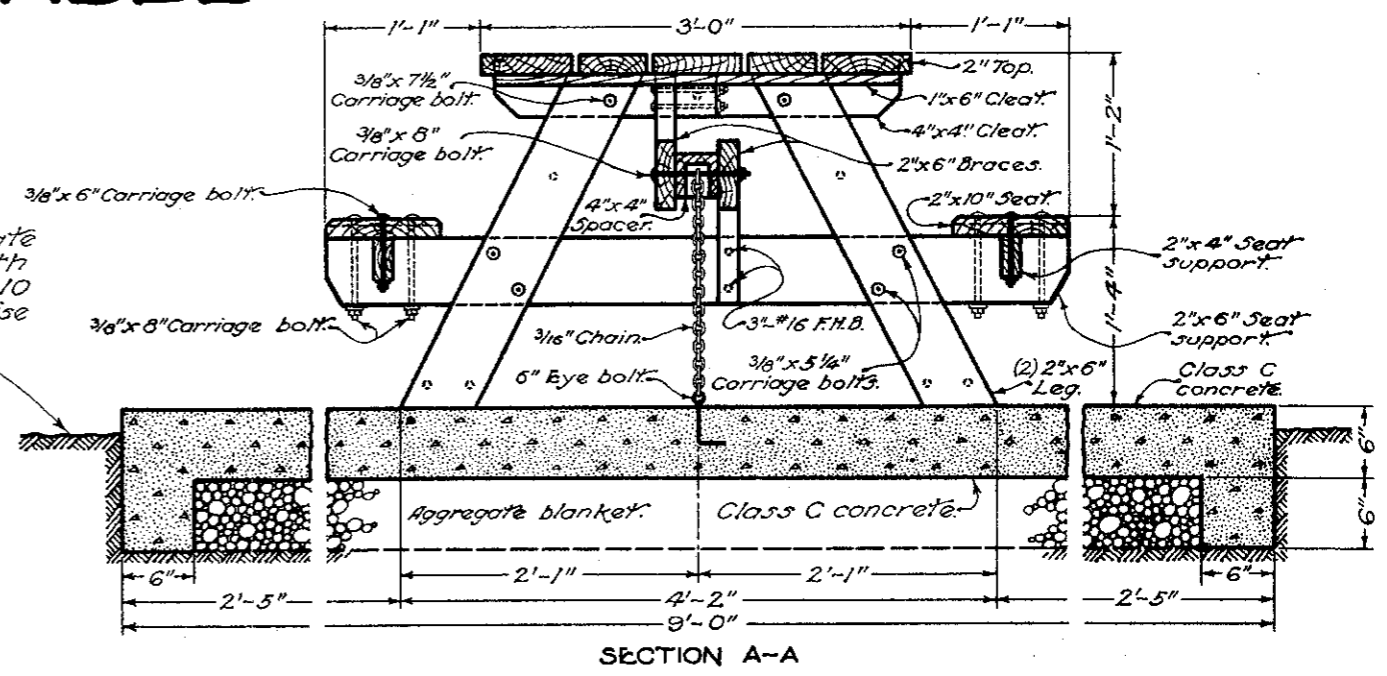


PICNIC TABLE



Graded to eliminate standing water with maximum slope of 10 to 1 unless otherwise directed.



LUMBER		HARDWARE	
2-2" x 6" x 7'	TABLE TOPS	28-3/2"	#16 F.H.B. WOOD SCREWS
3-2" x 8" x 7'	TABLE TOPS	24-3"	#16 F.H.B. WOOD SCREWS
2-4" x 4" x 14 3/8"	TABLE TOP SUPPORTS	39-2"	#16 F.H.B. WOOD SCREWS
1-1" x 6" x 34"	CLEAT FOR TABLE TOP	8-3/8" x 5 1/4"	CARRIAGE BOLTS
2-1" x 3" x 34"	CLEATS FOR TABLE TOP	6-3/8" x 6"	CARRIAGE BOLTS
2-4" x 4" x 34"	CLEATS FOR TABLE TOP	4-3/8" x 7 1/2"	CARRIAGE BOLTS
2-2" x 10" x 7'	SEATS	9-3/8" x 8"	CARRIAGE BOLTS
2-2" x 4" x 4'	SEAT SUPPORTS	2-3/8" x 8"	MACHINE BOLTS
2-2" x 6" x 5'-2"	SEAT SUPPORTS	1-1/2" x 6"	EYE BOLT
2-2" x 6" x 4'-6"	CROSS BRACES	31-3/8"	FLAT WASHERS
8-2" x 6" x 32"	LEGS	29-3/8"	LOCK WASHERS
1-4" x 4" x 6"	BRACING SPACER	1-3/16" x 24"	CHAIN

NOTES

GENERAL: All lumber shall be Arkansas Soft Textured, Shortleaf Yellow Pine, S4S 5/4 D.K.D. Mem M-8. Lumber for seats and table tops shall be "C" grade or better; other lumber shall be No. 1 Common. Not more than one (1) very small pitch pocket will be allowed in each piece of lumber used in the table top and seats. All lumber shall bear "Arkansas Pine Association" trademark.

All lumber shall be pressure treated with Pentachlorophenol solution as specified in Section M-8.3 except that the Pentachlorophenol solution shall be "Water Repellent" and meet the requirements of the National Woodworking Manufacturers Association.

Bolts shall be cadmium plated or hot galvanized finish. Screws shall be brass. Machine bolts shall have washers on both ends in addition to the lock washer on the nut end. Carriage bolts shall have plain and lock washers on the nut end.

TABLE WITH CONC. SLAB shall consist of furnishing, assembling and placing all materials, including the excavation, portland cement concrete slab and aggregate blanket required to complete the table and slab as detailed.

Aggregate for required blanket under table slab shall meet the requirements of Section I-22.02, Grading "C" or "D".

SHELTER HOUSE TABLE: This item shall consist of furnishing and assembling all materials required to complete the table as detailed but shall not include the portland cement concrete slab.

BUREAU OF LOCATION AND DESIGN
OHIO DEPARTMENT OF HIGHWAYS

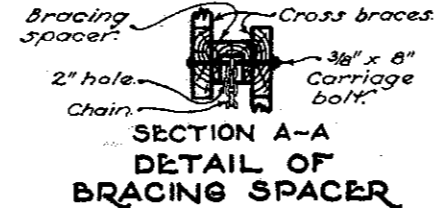
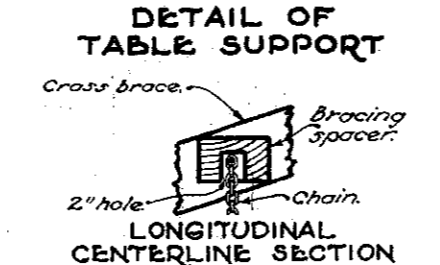
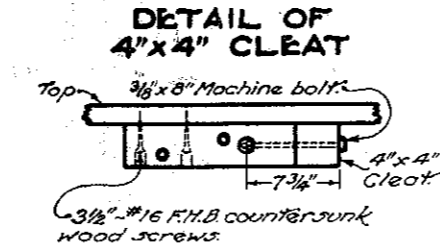
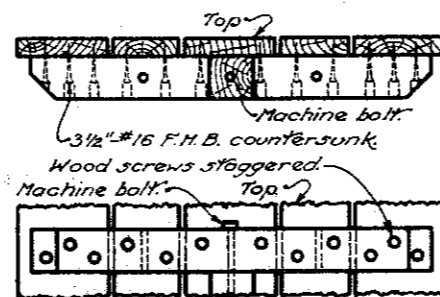
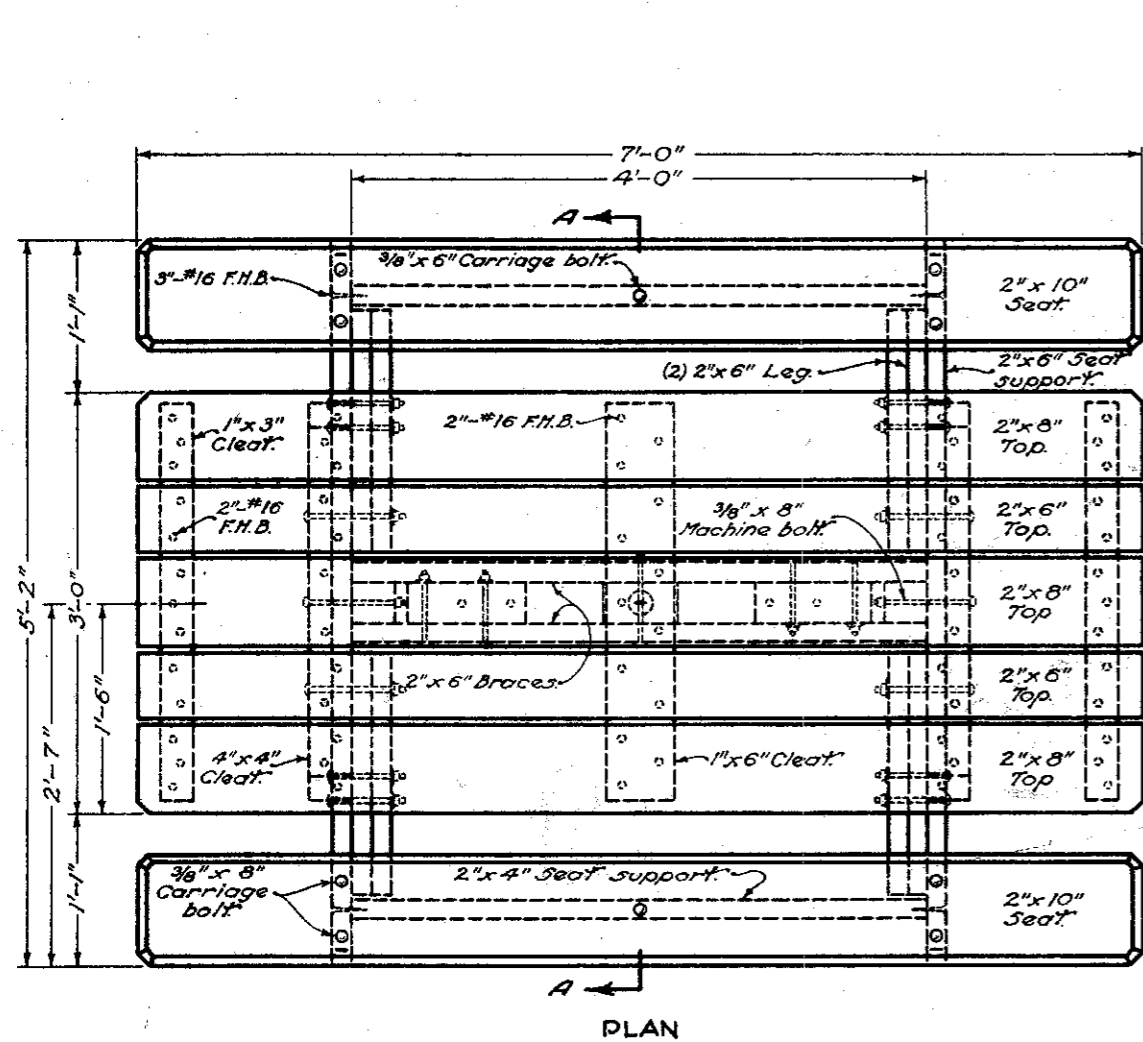
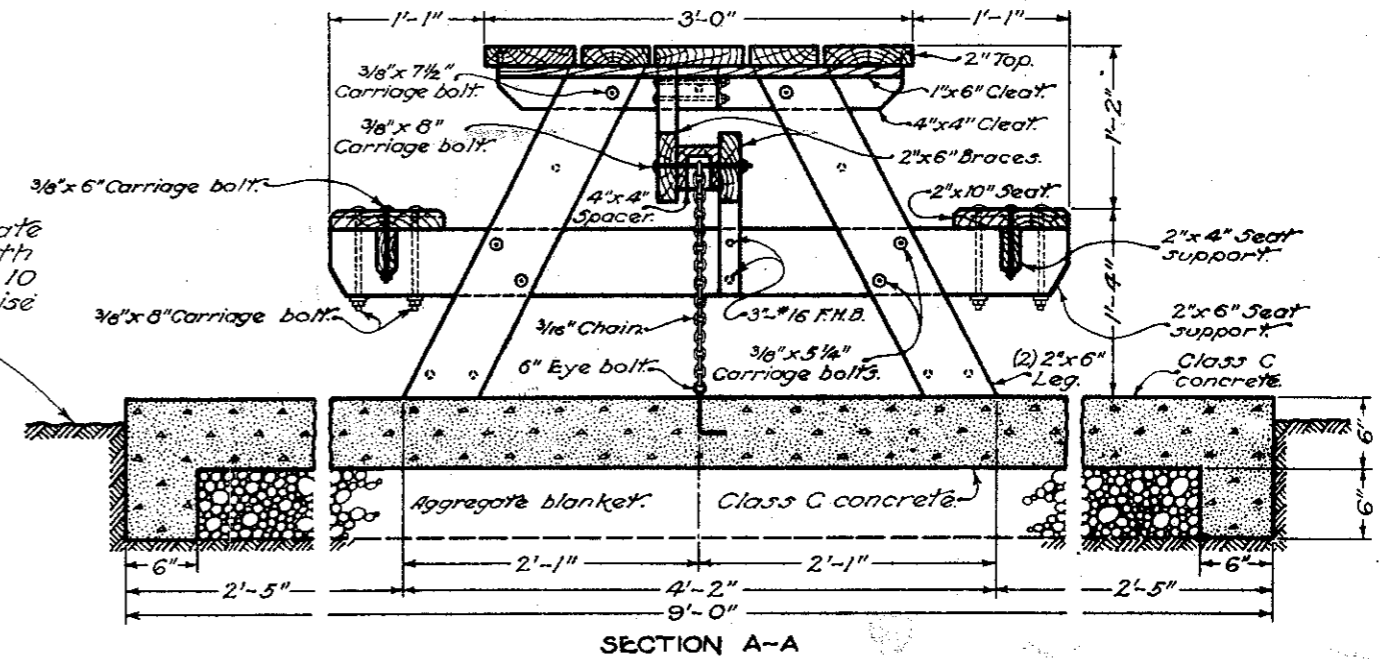
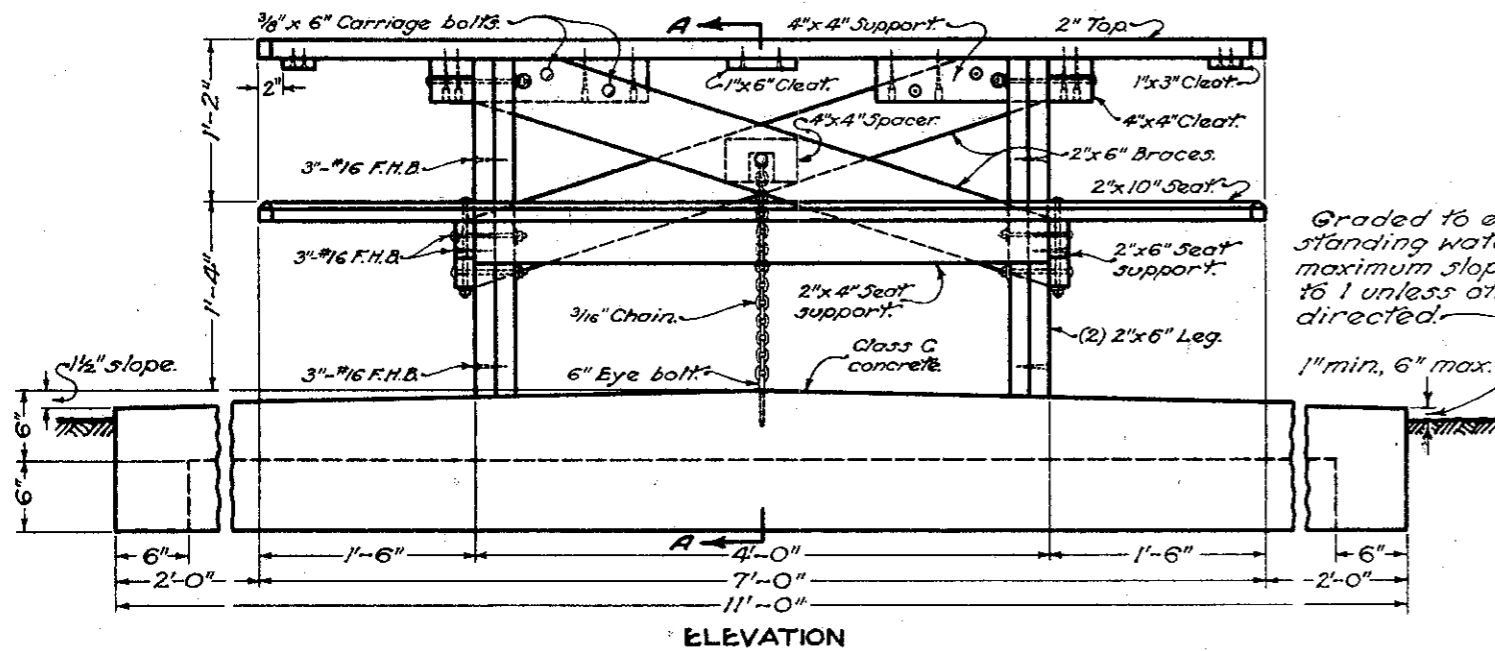
ROADSIDE REST AREAS

DATE: 9-14-58
1-20-58

STANDARD CONSTRUCTION DRAWING
APPROVED: *R. E. Shultz* ENGR. L. & D.

R. R. A. No. 2

PICNIC TABLE



LIST OF MATERIAL

LUMBER		HARDWARE	
2-2" x 6" x 7'	TABLE TOPS	28-3 1/2"	#16 F.H.B. WOOD SCREWS
3-2" x 8" x 7'	TABLE TOPS	24-3"	#16 F.H.B. WOOD SCREWS
2-4" x 4" x 14 3/8"	TABLE TOP SUPPORTS	39-2"	#16 F.H.B. WOOD SCREWS
1-1" x 6" x 34"	CLEAT FOR TABLE TOP	8-3/8" x 5 1/4"	CARRIAGE BOLTS
2-1" x 3" x 34"	CLEATS FOR TABLE TOP	6-3/8" x 6"	CARRIAGE BOLTS
2-4" x 4" x 34"	CLEATS FOR TABLE TOP	4-3/8" x 7 1/2"	CARRIAGE BOLTS
2-2" x 10" x 7'	SEATS	9-3/8" x 8"	CARRIAGE BOLTS
2-2" x 4" x 4'	SEAT SUPPORTS	2-3/8" x 8"	MACHINE BOLTS
2-2" x 6" x 5'-2"	SEAT SUPPORTS	1-1/2" x 6"	EYE BOLT
2-2" x 6" x 4'-6"	CROSS BRACES	31-3/8"	FLAT WASHERS
8-2" x 6" x 32"	LEGS	29-3/8"	LOCK WASHERS
1-4" x 4" x 6"	BRACING SPACER	1-3/16" x 24"	CHAIN

NOTES

GENERAL: All lumber shall be Arkansas Soft Textured, Shortleaf Yellow Pine, S4S Syd. K.D. Lumber for seats and table tops shall be "C" grade or better; other lumber shall be No. 1 Common. Not more than one (1) very small pitch pocket will be allowed in each piece of lumber used in the table top and seats. All lumber shall bear "Arkansas Pine Association" trademark. All lumber shall be pressure treated with a "water repellent" type of Pentachlorophenol solution meeting the requirements of the National Woodworking Manufacturers Association.

Bolts shall be cadmium plated or hot galvanized finish. Screws shall be brass. Machine bolts shall have washers on both ends in addition to the lock washer on the nut end. Carriage bolts shall have plain and lock washers on the nut end.

TABLE WITH CONC. SLAB shall consist of furnishing, assembling and placing all materials, including the excavation, portland cement concrete slab and aggregate blanket required to complete the table and slab as detailed.

Aggregate for required blanket under table slab shall meet the requirements of 310, Grading "C" or "D".

SHELTER HOUSE TABLE: This item shall consist of furnishing and assembling all materials required to complete the table as detailed but shall not include the portland cement concrete slab.

BUREAU OF LOCATION AND DESIGN
OHIO DEPARTMENT OF HIGHWAYS

ROADSIDE REST AREAS

DATE: 6-1-65

STANDARD CONSTRUCTION DRAWING **RRA-2**

APPROVED *[Signature]* ENGR. L. & D.