

TRANSITION FROM TYPE 7 GUARDRAIL TO BRIDGE PARAPET

POST LEGEND

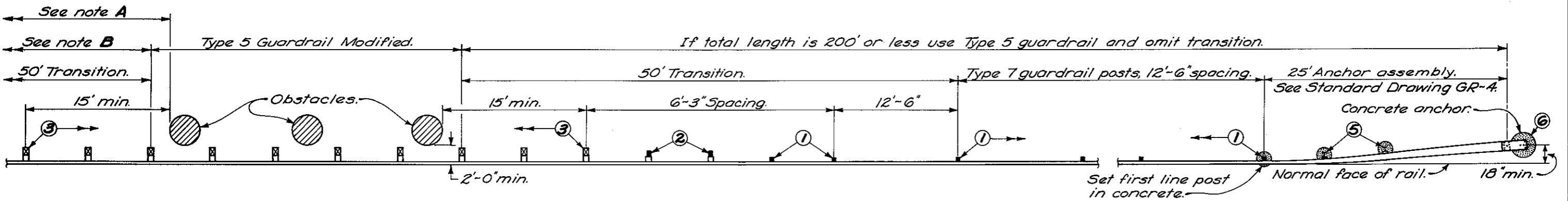
- ① Standard Type 7 guardrail posts.
- ② 6"x6" wood post, or W6x8.5 steel post; 6"x8"x14" wood or W8x10 steel block; 5/8" post bolt.
- ③ 6"x8" wood post or W6x15.5 steel post; 6"x8"x14" wood or W8x10 steel block; 5/8" post bolt.
- ④ 6"x8" wood post or W6x15.5 steel post, encased in concrete; 5/8" post bolt.
- ⑤ W6x8.5 steel post, encased in concrete, with special offset blocks as per Standard Drawing GR-4.
- ⑥ Concrete anchor as per Standard Drawing GR-4.

NOTES

FLARE OFFSET: The 1'-6" flare offset from normal face of rail shown in the plan views will be utilized only where shoulder width is insufficient for providing standard offsets shown on GR-5 and GR-6. Use of the 1'-6" offset will generally be limited to upgrading existing highways for safety or the construction or reconstruction of highways with design traffic less than 1000 ADT or design speeds less than 50 mph.

CONCRETE shall be Class C; and encasement, where required, shall be 4" minimum.

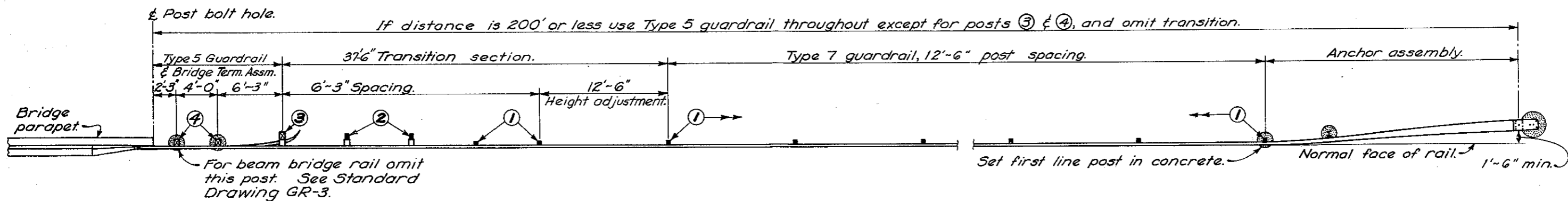
STEEL: All steel parts shall be galvanized.



TRANSITION FROM TYPE 7 GUARDRAIL TO TYPE 5 AT OBSTACLE

- (A) Reverse of approach arrangement on two-directional roadways.
- (B) 50' minimum on directional roadways (25' Type 5 guardrail plus the 25' end assembly).

BUREAU OF LOCATION AND DESIGN OHIO DEPARTMENT OF HIGHWAYS	
GUARDRAIL TRANSITIONS	
DATE: 1-1-71	
STANDARD CONSTRUCTION DRAWING	
GR-7	
APPROVED <i>R.E. Beth</i> ENGR., L. & D.	



TRANSITION FROM TYPE 7 GUARDRAIL TO BRIDGE PARAPET

POST LEGEND

- ① Standard Type 7 guardrail posts.
- ② 6"x6" wood post, or W6x9 steel post; 6"x8"x14" wood or W8x10 steel block; 5/8" post bolt.
- ③ 6"x8" wood post or W6x15 steel post; 6"x8"x14" wood or W8x10 steel block; 5/8" post bolt.
- ④ 6"x8" wood post or W6x15 steel post, encased in concrete; 5/8" post bolt.
- ⑤ Standard Type 5 guardrail posts.

NOTES

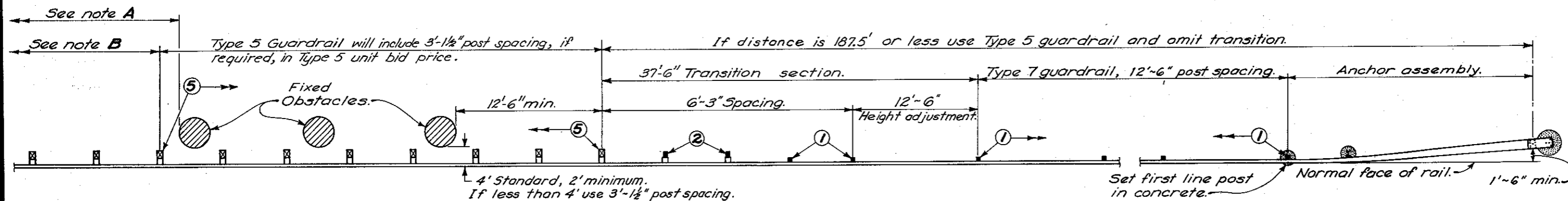
FLARE OFFSET: The 1'-6" flare offset from normal face of rail shown hereon will be utilized only with Type A anchor where the shoulder width is insufficient for providing standard offsets shown on GR-5 and GR-6.

ANCHOR ASSEMBLY: Although Type A anchor is shown on this drawing, the actual type specified in the plans may be different.

CONCRETE encasement, where required, shall be 4" minimum.

STEEL: All steel parts shall be galvanized.

TYPE 4: These transitions are to be modified for use with Type 4 guardrail as follows: All ① posts shall be Standard Type 4 posts except the two ① posts shown within the transition section shall be ② posts. No height adjustment is required.



TRANSITION FROM TYPE 7 GUARDRAIL TO TYPE 5 AT OBSTACLE

- (A) Reverse of approach arrangement on two-directional roadways.
- (B) 25' minimum on directional roadways (12.5' Type 5 guardrail plus Type T anchor assembly).

BUREAU OF LOCATION AND DESIGN
OHIO DEPARTMENT OF TRANSPORTATION

**GUARDRAIL
TRANSITIONS**

DATE
1-1-71
2-5-82

STANDARD
CONSTRUCTION
DRAWING

GR-7

APPROVED _____ ENGR. L. & D.