

□ CLEARANCE PROVIDED FROM EACH END OF BEARING RETAINER SHALL BE 3" WHICH ALLOWS FOR MAXIMUM EXPANSION LENGTH OF 250'-0" PLUS AN ADDITIONAL 1" FOR CLEARANCE.

**BEARING RETAINER FOR
30° < SKEW ANGLE < 45°**

PLACE RETAINER ASSEMBLY ON ACUTE ANGLE SIDE OF BEARINGS.

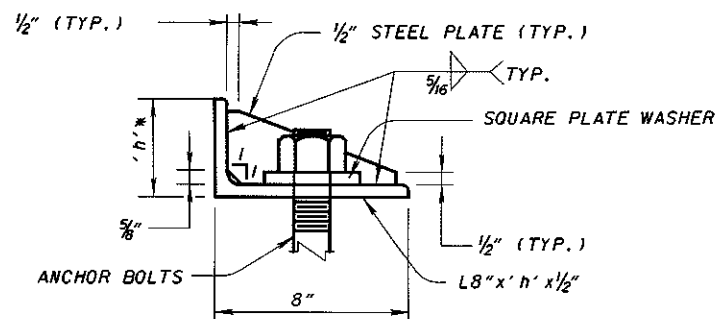
NOTE:

HP STEEL SHAPE INCLUDED WITH ELASTOMERIC BEARING FOR PAYMENT.

1/2" DIAMETER X 12" LONG ANCHOR BOLTS WITH NUT AND 4" x 4" x 1/2" SQUARE PLATE WASHER WITH 1 3/4" DIAMETER HOLES, TO BE FIELD DRILLED AND GROUTED WITH AN EPOXY NON-SHRINKING GROUT IN 1 3/4" X 10" DEEP HOLES.

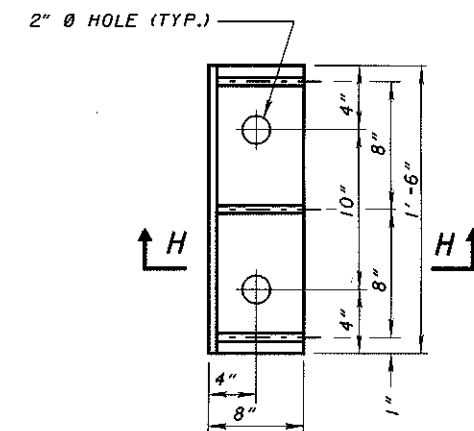
REINFORCING STEEL IN THE VICINITY OF THE BEARING RETAINER SHALL BE ACCURATELY PLACED TO AVOID INTERFERENCE WITH THE DRILLING OF BEARING RETAINER ANCHOR HOLES.

SEE NOTES ON SHEET 7/7 FOR ADDITIONAL REQUIREMENTS.



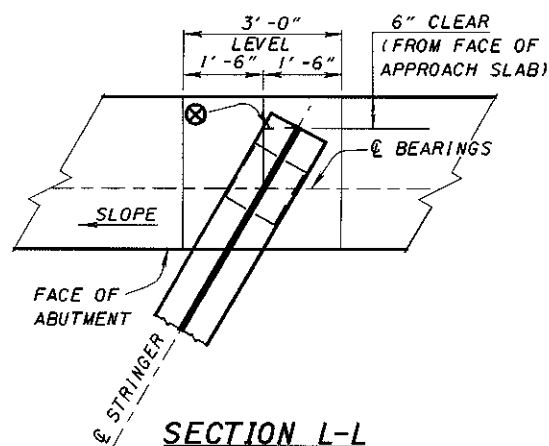
* DIMENSION 'h' VARIES AND SHALL BE EQUAL TO ELASTOMERIC BEARING HEIGHT + LOAD PLATE THICKNESS BUT SHALL NOT BE LESS THAN 4".

SECTION H-H



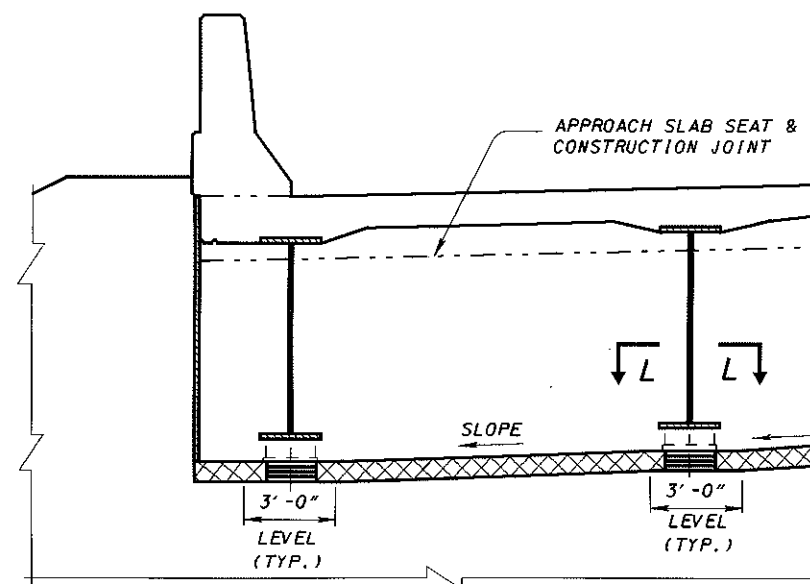
BEARING RETAINER ASSEMBLY

SEE SHEET 7/7 FOR PLACEMENT INSTRUCTIONS

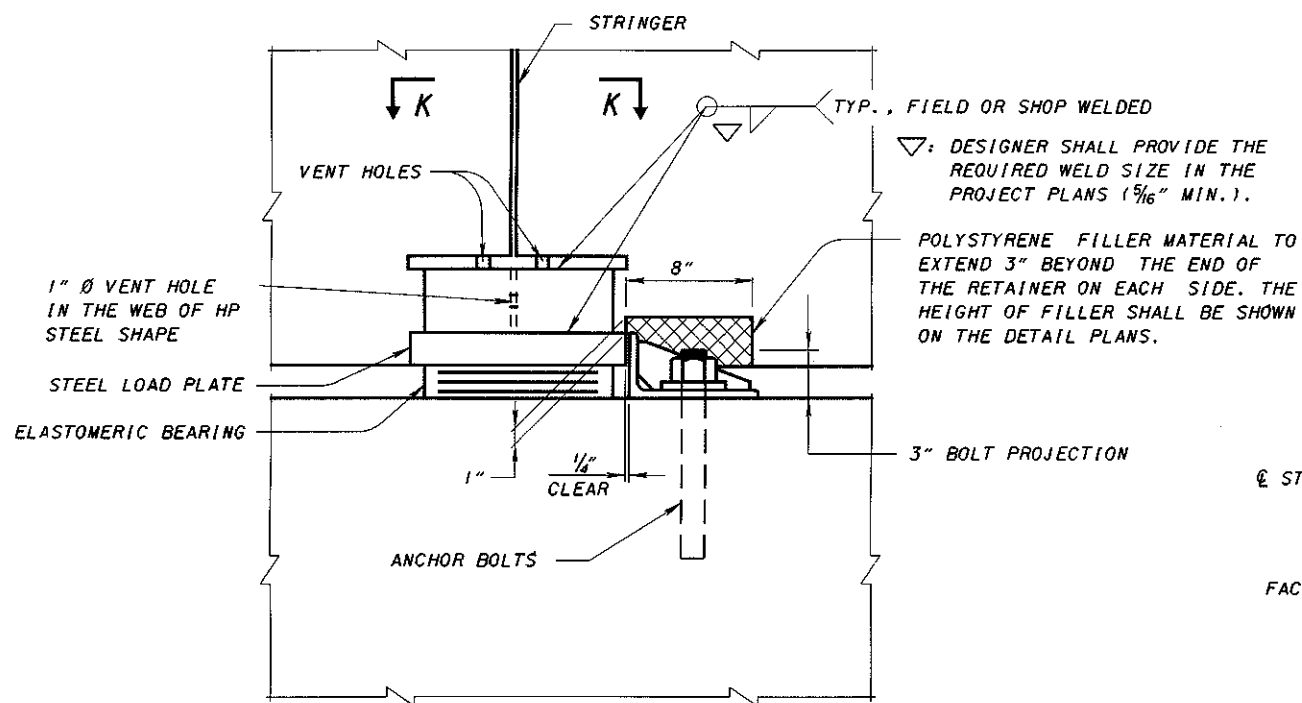


SECTION L-L

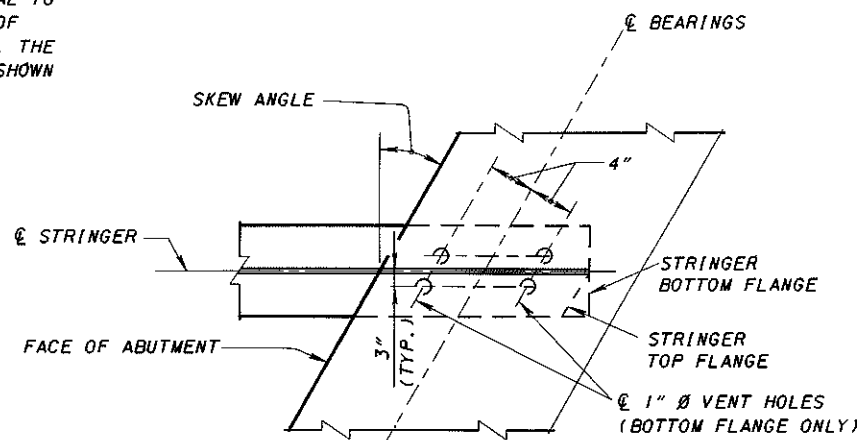
⊗ - CLIP ONLY THE TOP FLANGE TO MAINTAIN THE CLEARANCE



PART ELEVATION OF BEAM SEAT



SECTION J-J



SECTION K-K