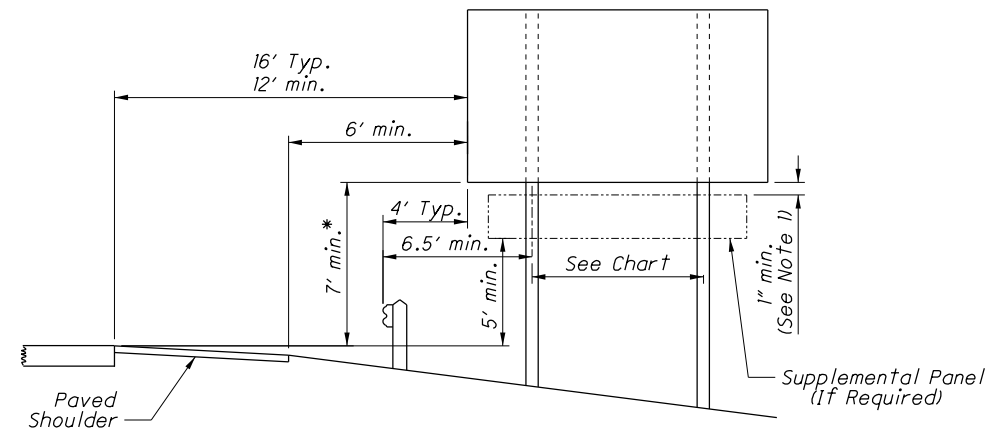
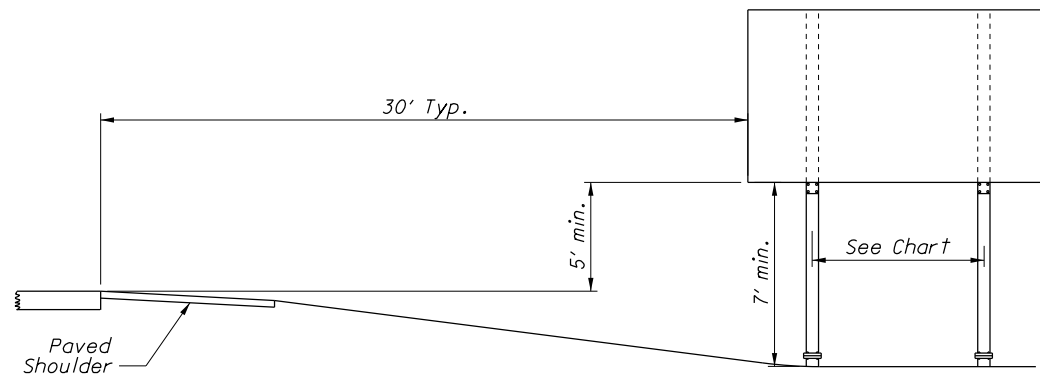


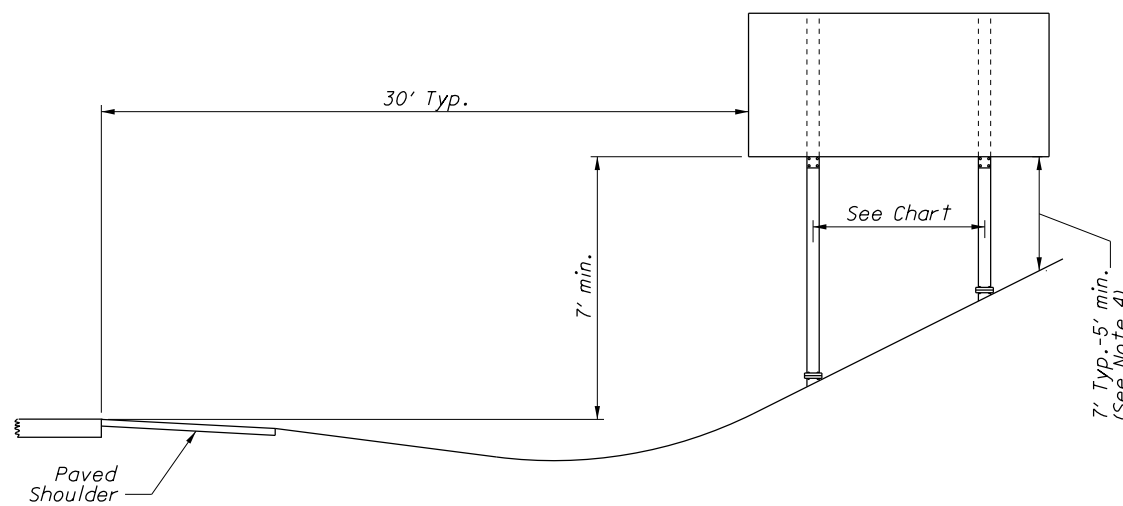
FREEWAYS AND EXPRESSWAYS



TYPICAL INSTALLATION WITH GUARDRAIL
* 8' min. with Supplemental Panel

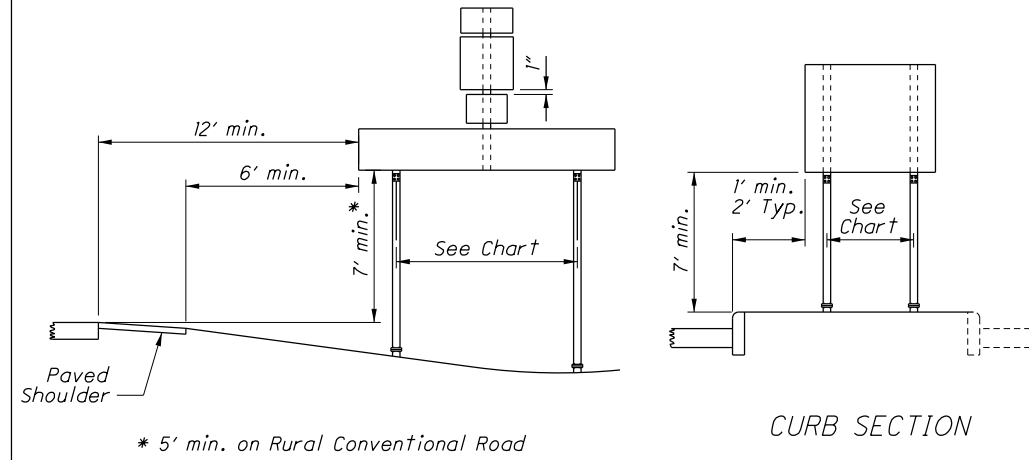


TYPICAL INSTALLATION, FILL SECTION, 30' OFFSET

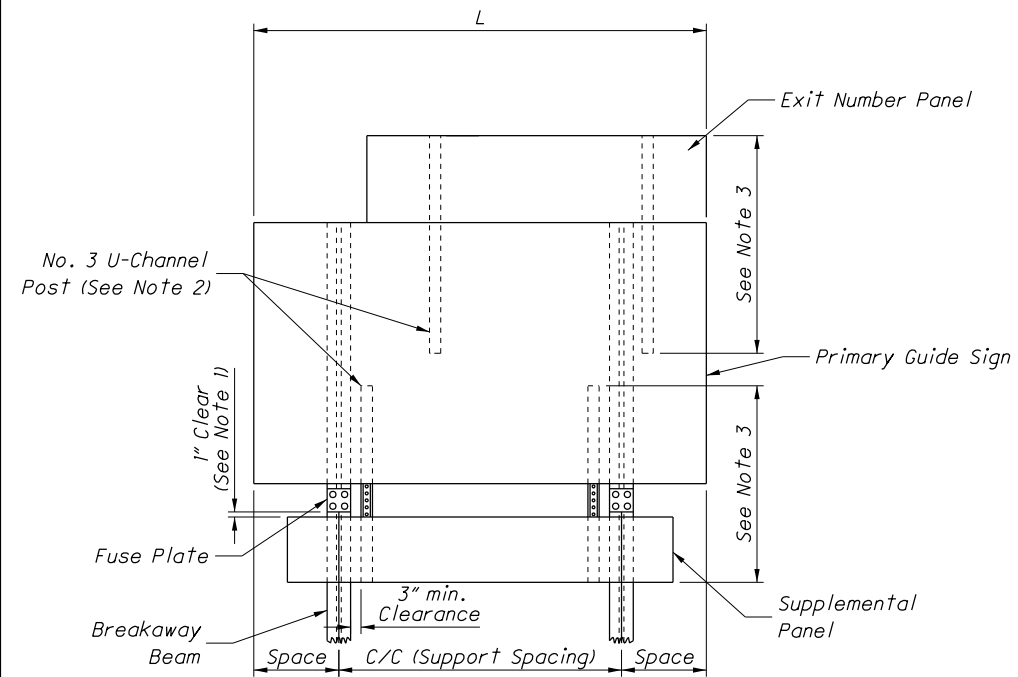


TYPICAL INSTALLATION, CUT SECTION, 30' OFFSET

STREETS-RAMPS-HIGHWAYS



CURB SECTION



SUPPLEMENTAL PANEL ATTACHMENT

SUPPORT SPACING CHART							
2 SUPPORTS				3 SUPPORTS			
L (Feet)	SPACING (INCHES)			L (Feet)	SPACING (INCHES)		
	SPACE	c/c	SPACE		SPACE	c/c	SPACE
4	9	30	9	20	24	96	24
5	12	36	12	21	30	96	30
6	12	48	12	22	36	96	36
7	12	60	12	23	30	108	30
8	12	72	12	24	36	108	36
9	12	84	12	25	42	108	42
10	12	96	12	26	36	120	36
11	18	96	18	27	42	120	42
12	24	96	24	28	48	120	48
13	30	96	30	29	42	132	42
14	36	96	36	30	48	132	48
15	36	108	36				
16	42	108	42				
17	42	120	42				
18	48	120	48				
19	48	132	48				

NOTES:

1. Mount supplemental panels 1" below the fuse plate on breakaway beam installations and 1" minimum below the guide sign when the sign supports are rigid beams.
2. Attach No. 3 U-channel drive post to both the guide sign and the exit number or other supplemental panels by mounting clips fastened alternately at each horizontal extrusion and both sides at the top and bottom of the post. Do not make any connections between the supplemental panel and breakaway beams.
3. Length of post shall be 2.5 times the height of the supplemental panel. The post spacing shall be as per the support spacing chart.
4. Use 5' minimum mounting height above ground if back slopes are greater than 3:1.
5. Align the exit number panel with the right edge of the sign for right exits and with the left edge of the sign for left exits.