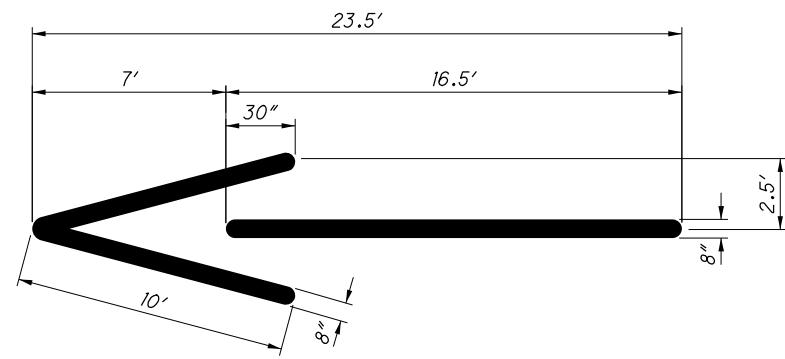
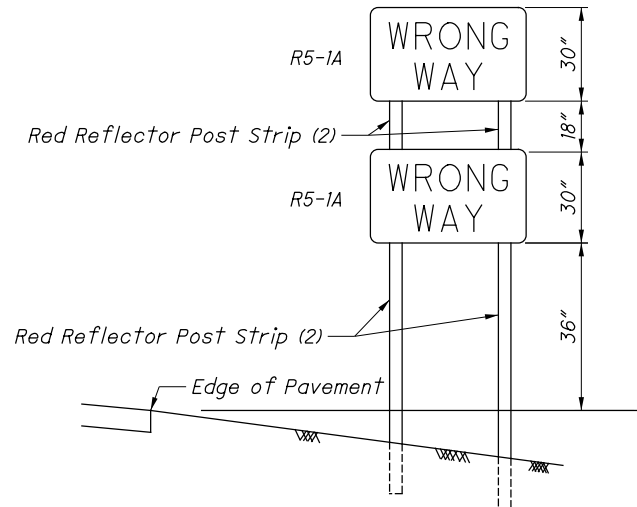


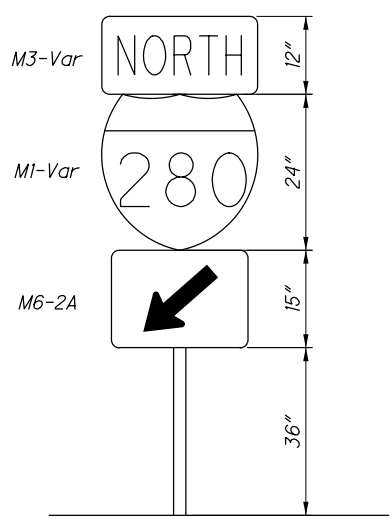
WRONG-WAY ARROW



WRONG-WAY SIGN MOUNTING DETAILS



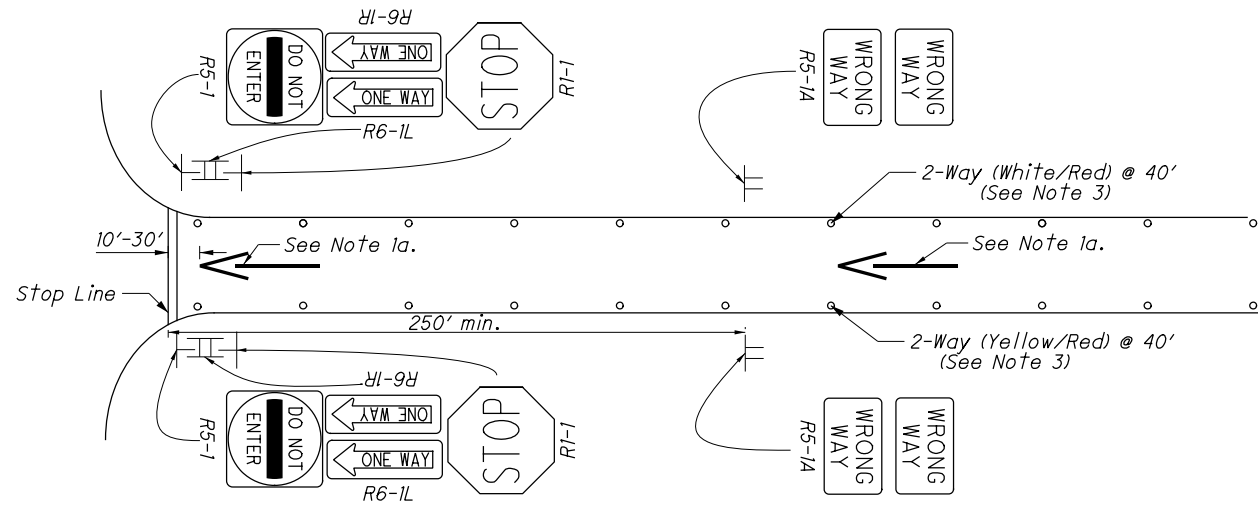
ENTRANCE RAMP DIRECTIONAL SIGN ASSEMBLY (OPTIONAL)



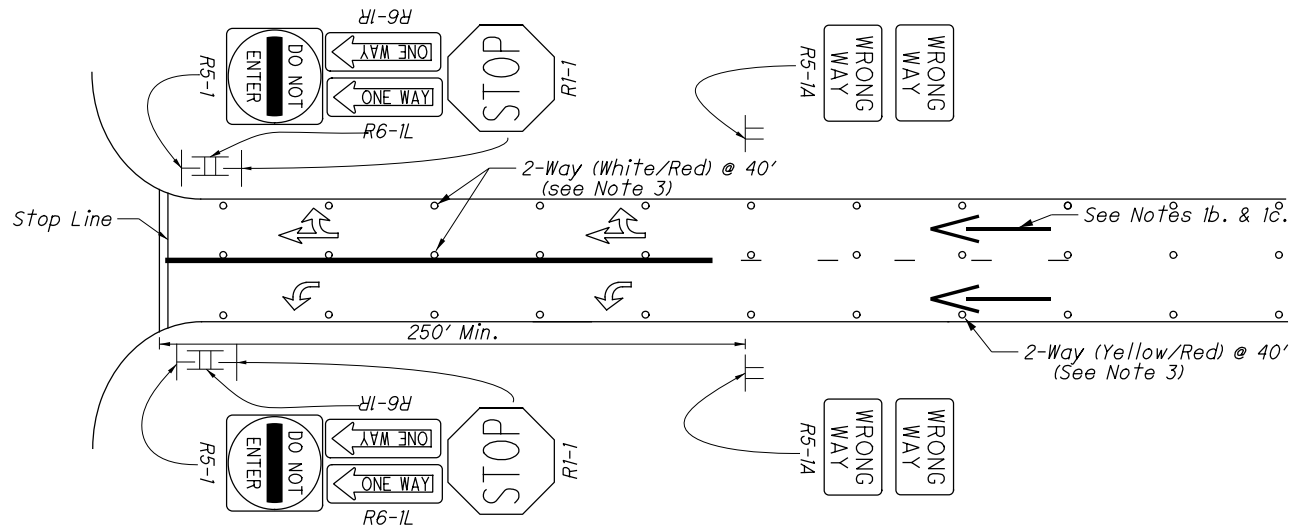
LEGEND

- ← Wrong Way Arrow
- 2-Way RPM Reflectors

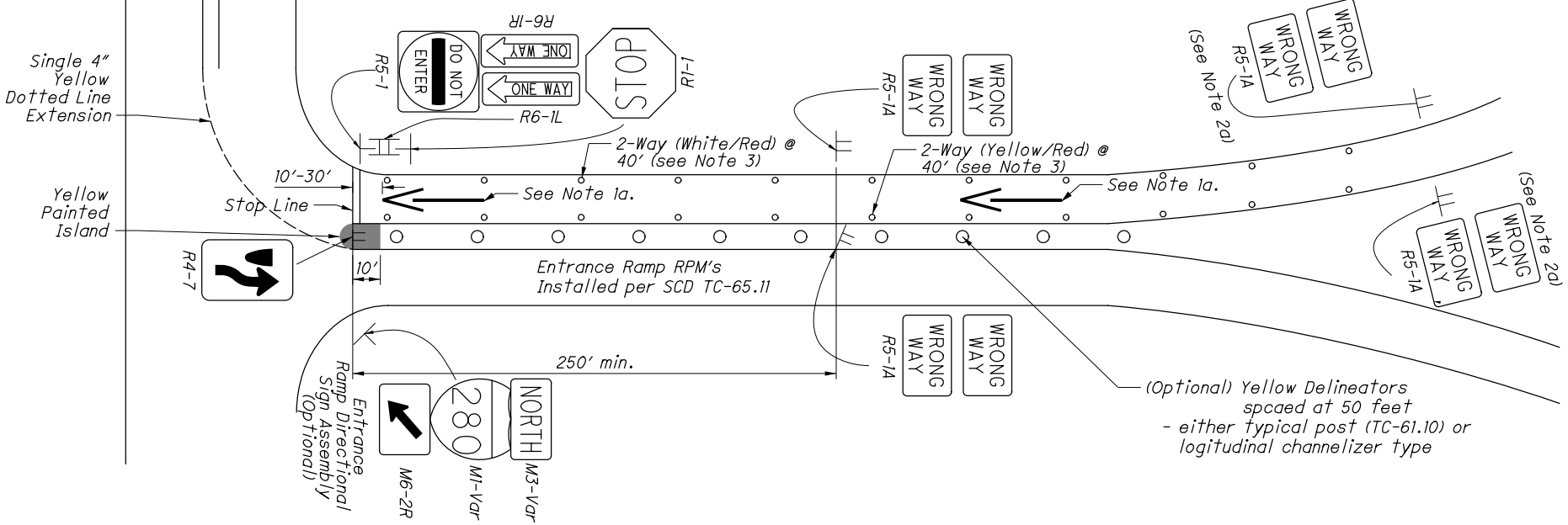
WRONG-WAY ARROW AT SINGLE-LANE RAMP



WRONG-WAY ARROW AT MULTI-LANE RAMP



WRONG-WAY ARROW AT PARTIAL CLOVERLEAF INTERCHANGE



NOTES:

- Wrong-way arrow markings are placed on the ramps as follows:
 - On ramps where lane-use arrows are not used, place the first wrong-way arrow 10 to 30 feet in advance of stop line. Place the second wrong-way arrow according to engineering judgment.
 - On ramps where lane-use arrows are used, place the wrong-way arrow in advance of the first lane-use arrow at a spacing equal to or greater than the spacing between the lane-use arrows.
 - On multi-lane ramps, a wrong-way arrow should be placed in each lane, side by side.
- Traffic control signs are placed as follows:
 - Place the wrong-way sign (R5-1A, 42" x 30") 250' min. in advance of the stop line. The height of the 2nd wrong-way sign should be 3' above the nearest edge of the pavement.

On partial cloverleaf interchanges, the wrong-way sign between the on and off ramps should be angled 45° towards the off ramp (wrong-way traffic).

A second set of wrong-way signs may be placed on the ramp according to engineering judgment.

On partial cloverleaf interchanges, the optional entrance ramp directional sign assembly should be angled 45° toward the left turning traffic.
 - The red sign post reflectors shall be added to the STOP sign, DO NOT ENTER sign, and wrong-way sign assembly.
 - The DO NOT ENTER sign (R5-1) may be angled up to 45° toward left and right turning traffic.
- Raised pavement markers (RPMs) are placed as follows:
 - RPMs on the edge line -
 - Shall be two-way white/red on white edge line
 - Shall be two-way yellow/red on yellow edge line
 - Eleven (11) RPMs shall be spaced 40' apart in advance of the stop line; the rest shall be installed per SCD TC-65.11.
 - RPMs on the channelizing line/lane line -
 - Shall be two-way white/red, spaced 40' apart
 - Eleven (11) RPMs shall be spaced 40' apart in advance of the stop line; the rest shall be installed per SCD TC-65.11.